

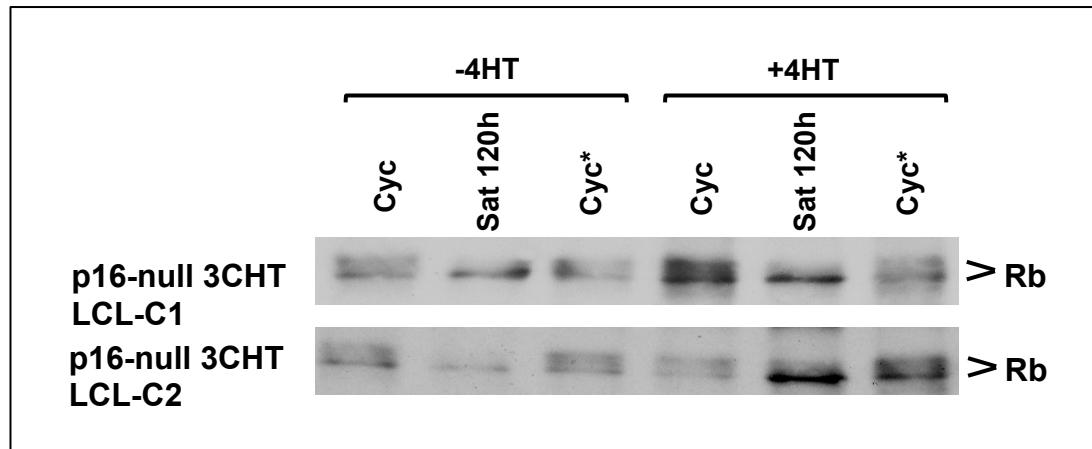
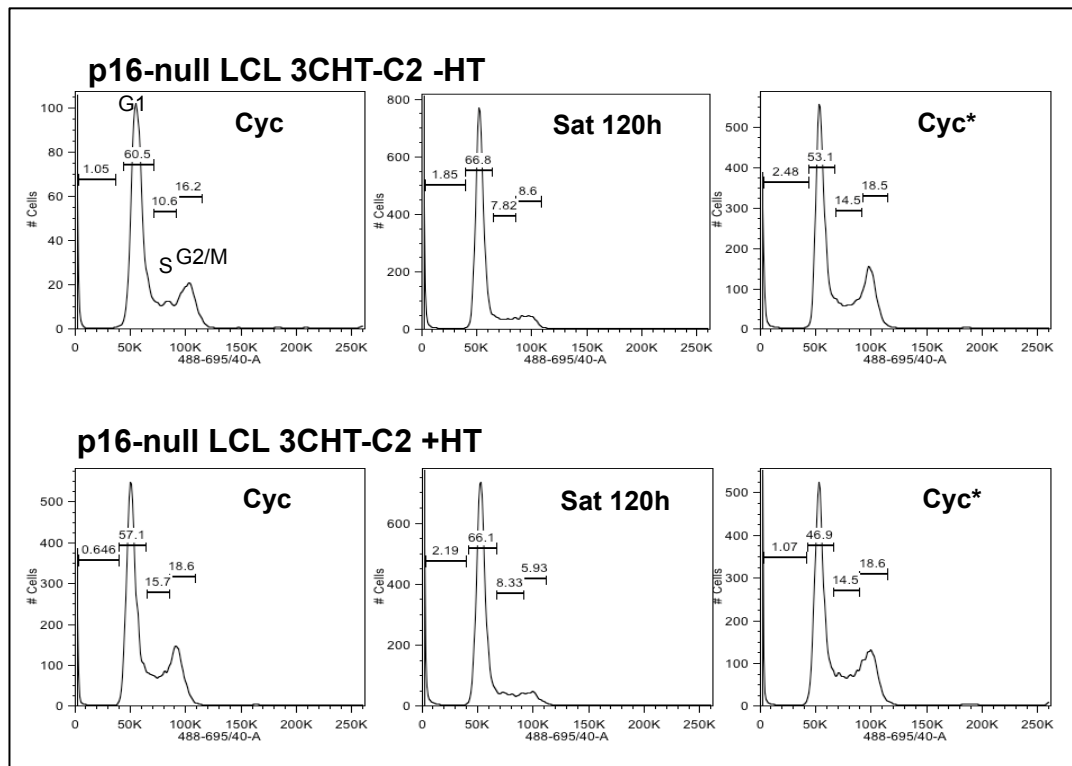
A**B**

Figure S4. Hypophosphorylated Rb and G1-arrest in a p16-null LCL. (A) Western blots showing the phosphorylation status of Rb (hypo- the faster migrating bands and hyper- the slower migrating bands indicated). Total protein was extracted from two p16-null LCLs that were either harvested 24 hours after feeding (Cyc), left for 120 hours to reach saturation density (Sat 120h) or left 96 hours, re-fed and harvested 24 hours later (Cyc*). **(B)** Samples of cells from LCL 3CHT-C2, fixed, stained with PI and analysed by flow cytometry.