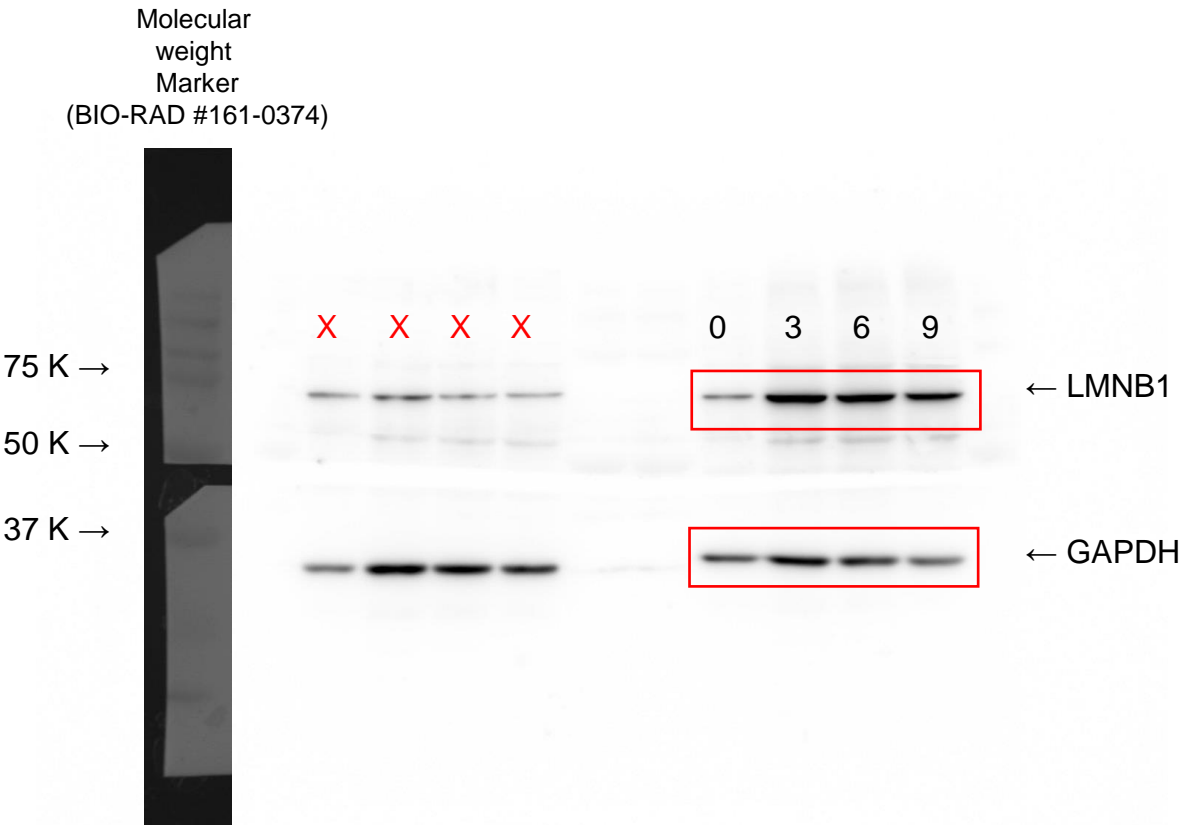
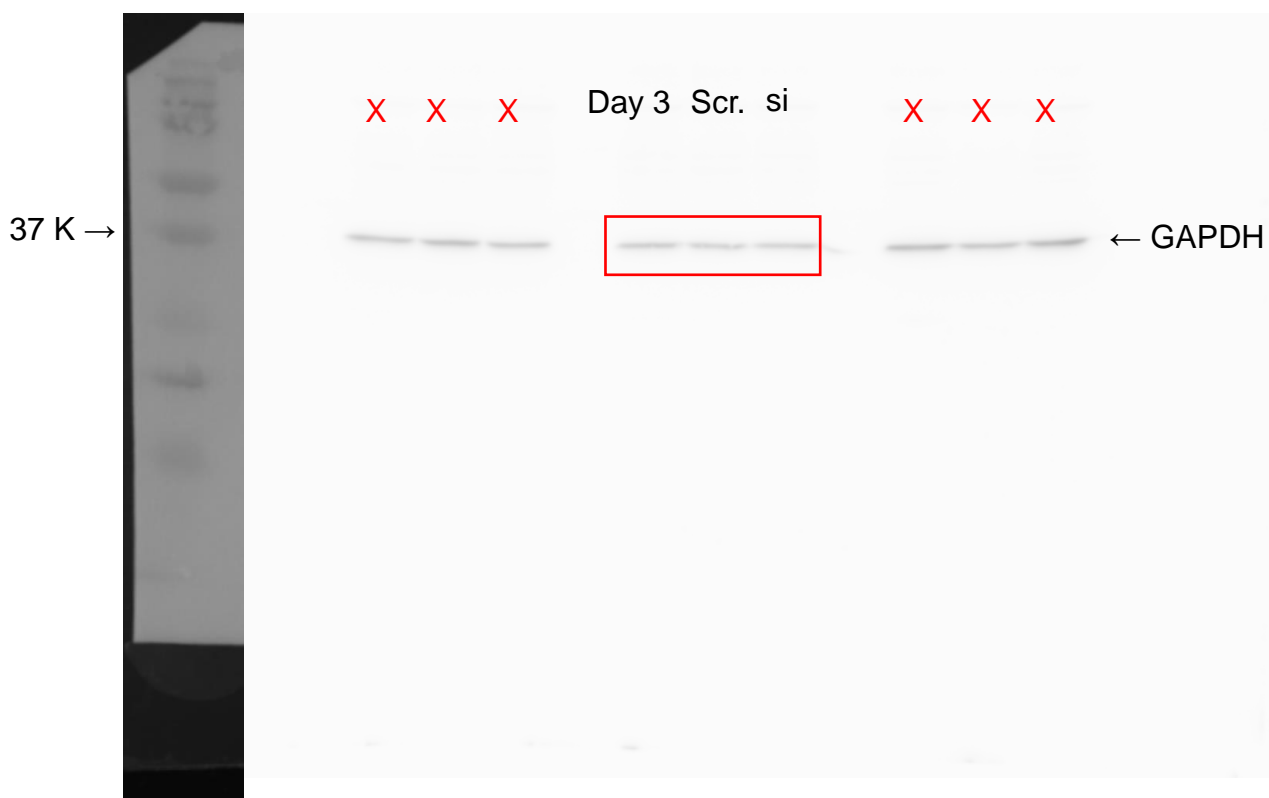
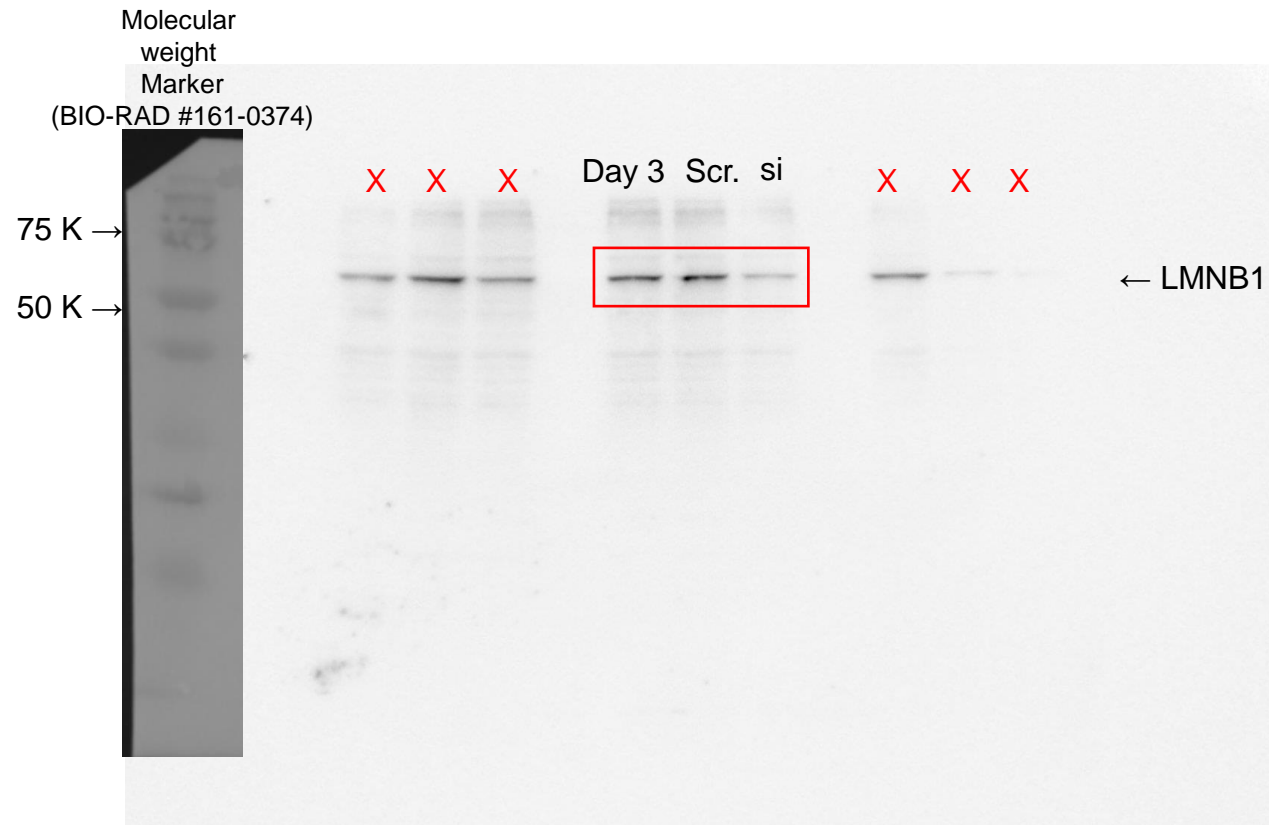


Fig3B raw images



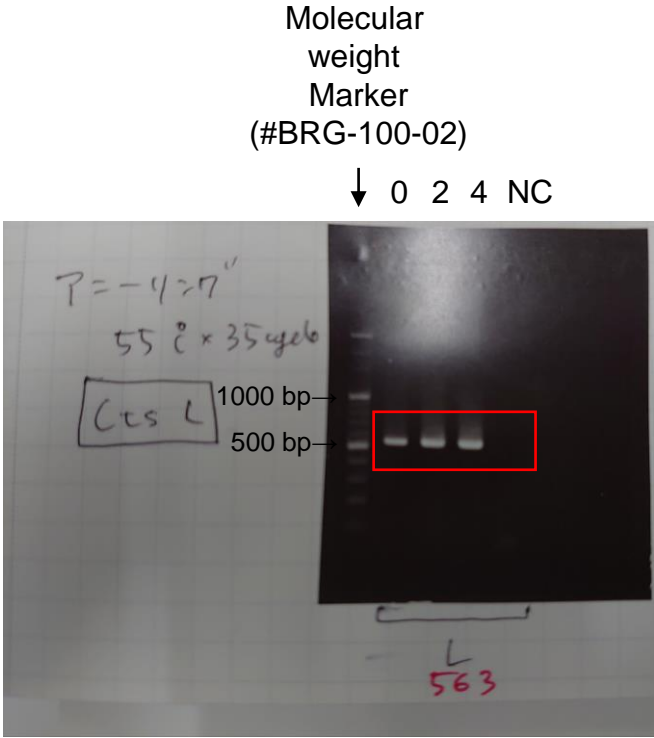
PVDF membrane was cut and images were captured at same time by LAS-3000.
Exposure time: 45sec

Fig4A raw images

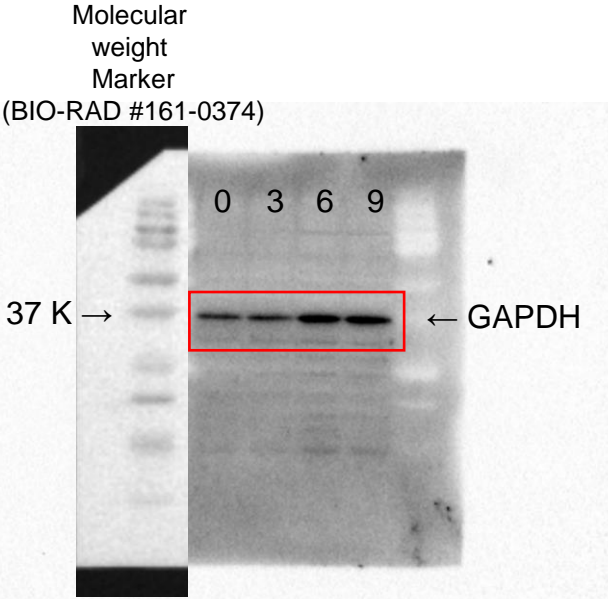
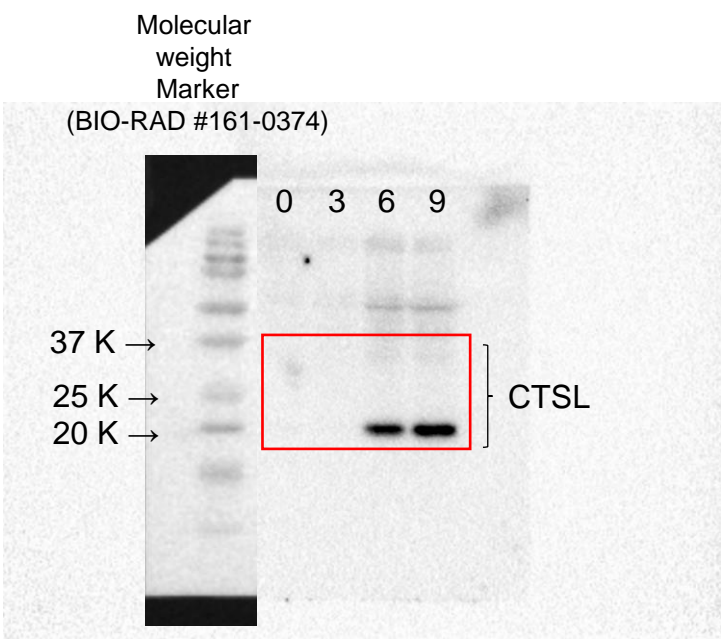


Images were captured by LAS-3000. Exposure time :45sec (LMNB1), 30sec (GAPDH)
Molecular weight marker image was captured only one time at GAPDH detection timing.
Blot images were same membrane.

S6 Fig raw images



Samples were stained by ethidium bromide.
Image was captured by Gel DOC IT-TS (UVP).



Images were captured by Chemi Doc XRS+ imaging system (BIO-RAD). Exposure time : 5sec (LMNB1), 15sec (GAPDH)
Molecular weight marker image was captured only one time at CTSL detection timing.
Blot images were same membrane.