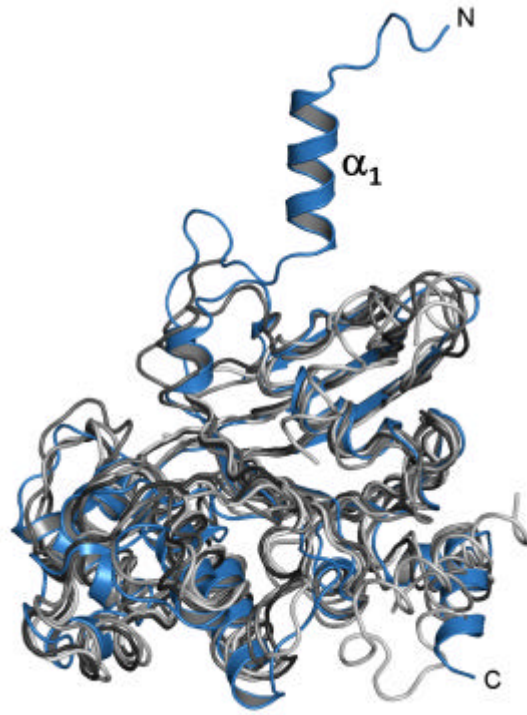
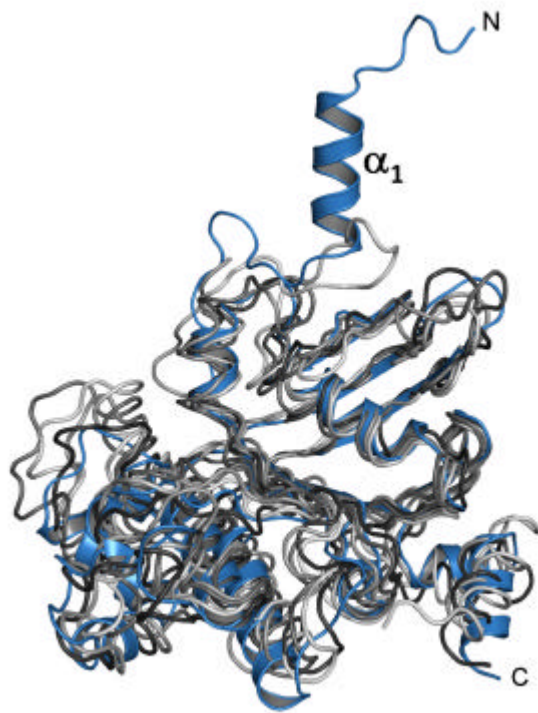


Supplementary Figure 1. ATPase activity assay. Reaction mixtures containing 100 μg ABCB6-NBD, 1 mM ATP and 5 mM MgCl_2 were incubated for 1, 5, 10, 15, 20 and 30 min, respectively. Error bars represent standard deviations from triplicates.



(a)



(b)

Supplementary Figure 2. Superposition of ABCB6-NBD with eight different NBDs. ABCB6-NBD is colored in blue and shown in cartoon representation. The other NBDs are shown as C α traces and are colored in different grey scales. The structure were superimposed using the DaliLite Server (Holm *et al.*, 2000) (a) Superposition with PDB entries 1r0w (Z-score: 21.8; r.m.s.d.: 2.6 Å; sequence identity: 27%), 2cbz (Z-score: 23.6; r.m.s.d.: 2.4 Å; sequence identity: 30%), 2ixe (Z-score: 27.5; r.m.s.d.: 2.0 Å; sequence identity: 36%) and 2pze (Z-score 22.5; r.m.s.d.: 2.7 Å; sequence identity: 27%). (b) Superposition with PDB entries 1jj7 (Z-score: 27.1; r.m.s.d.: 2.2 Å; sequence identity: 34%), 1b0u (Z-Score: 23.2; r.m.s.d.: 2.5 Å; sequence identity: 24%), 1l2t (Z-score 21.2; r.m.s.d.: 2.6 Å; sequence identity: 26%) and 1mt0 (Z-score: 27.7; r.m.s.d.: 2.2 Å; sequence identity: 42%). The figures were prepared with *PyMOL* (DeLano, 2008)

Table 1 Known structures of NBDs.

PDB Entry	Organism	Resolution [Å]	Ligands	Reference
2CBZ	<i>H. sapiens</i>	1.50	ATP, Mg ²⁺	Ramaen <i>et al.</i> , 2006
1JJ7	<i>H. sapiens</i>	2.40	ADP, Mg ²⁺	Gaudet <i>et al.</i> , 2001
2IXE	<i>R. norvegicus</i>	2.00	ATP, Mg ²⁺ , (D645N)	Procko <i>et al.</i> , 2001
2IXF	<i>R. norvegicus</i>	2.00	ATP, Mg ²⁺ , (D645N, Q678H)	Procko <i>et al.</i> , 2001
2IXG	<i>R. norvegicus</i>	2.70	ATP, (S621A, G622V, D645N)	Procko <i>et al.</i> , 2001
1XMI	<i>H. sapiens</i>	2.25	ATP, Mg ²⁺ , (F508A)	Lewis <i>et al.</i> , 2005
1XMJ	<i>H. sapiens</i>	2.30	ATP, Mg ²⁺ , (Δ F508A)	Lewis <i>et al.</i> , 2005
2PZE	<i>H. sapiens</i>	1.70	ATP, Mg ²⁺ , (Δ 405-436)	Atwell <i>et al.</i> , 2007
2PZF	<i>H. sapiens</i>	2.00	ATP, Mg ²⁺ , (Δ 405-436, Δ F508)	Atwell <i>et al.</i> , 2007
2PZG	<i>H. sapiens</i>	1.80	ATP Mg ²⁺ , (Δ 405-436)	Atwell <i>et al.</i> , 2007
2BBO	<i>H. sapiens</i>	2.55	ATP Mg ²⁺ , (F409L, F429S, F433L, G550E, R553Q, R555K, H667R)	Lewis <i>et al.</i> , unpublished
2BBS	<i>H. sapiens</i>	2.05	ATP Mg ²⁺ , (F429S, F494N, Q636R)	Lewis <i>et al.</i> , unpublished
2BBT	<i>H. sapiens</i>	2.30	ATP Mg ²⁺ , (F504N, Q646R)	Lewis <i>et al.</i> , unpublished
1R0W	<i>M. musculus</i>	2.20	-	Lewis <i>et al.</i> , 2004
1R0Y	<i>M. musculus</i>	2.55	ADP	Lewis <i>et al.</i> , 2004
1R0X	<i>M. musculus</i>	2.20	ATP, Mg ²⁺	Lewis <i>et al.</i> , 2004
1Q3H	<i>M. musculus</i>	2.50	ANP, Mg ²⁺	Lewis <i>et al.</i> , 2004
1XF9	<i>M. musculus</i>	2.70	ATP, Mg ²⁺ , (F508S)	Thibodeau <i>et al.</i> , 2005
1XFA	<i>M. musculus</i>	3.10	ATP, Mg ²⁺ , (F508R)	Thibodeau <i>et al.</i> , 2005

1B0U	<i>S. typhimurium</i>	1.50	ATP	Hung <i>et al.</i> , 1998
1G29	<i>T. litoralis</i>	1.90	Mg ²⁺	Diederichs <i>et al.</i> , 2000
1F3O	<i>M. jannaschii</i>	2.70	ADP, Mg ²⁺	Yuan <i>et al.</i> , 2001
1L2T	<i>M. jannaschii</i>	1.90	ATP, (E171Q)	Smith <i>et al.</i> , 2002
1GAJ	<i>M. jannaschii</i>	2.50	-	Karpowich <i>et al.</i> , 2001
1G6H	<i>M. jannaschii</i>	1.60	ADP, Mg ²⁺	Karpowich <i>et al.</i> , 2001
1MT0	<i>E. coli</i>	2.60	-	Schmitt <i>et al.</i> , 2003
1XEF	<i>E. coli</i>	2.50	ATP, Mg ²⁺ (H662A)	Zaitseva <i>et al.</i> , 2005
2FGK	<i>E. coli</i>	2.70	ATP, (E631Q)	Zaitseva <i>et al.</i> , 2006
2FGJ	<i>E. coli</i>	2.60	ATP, (H662A)	Zaitseva <i>et al.</i> , 2006
2FFB	<i>E. coli</i>	1.90	ADP, (E631Q)	Zaitseva <i>et al.</i> , 2006
2FFA	<i>E. coli</i>	1.70	ADP, (H662A)	Zaitseva <i>et al.</i> , 2006
2FF7	<i>E. coli</i>	1.60	ADP	Zaitseva <i>et al.</i> , 2006
3B5J	<i>E. coli</i>	2.00	TNP-ADP, (S504A)	Oswald <i>et al.</i> , 2008
2PMK	<i>E. coli</i>	1.60	TNP-ADP	Oswald <i>et al.</i> , 2008
1OXS	<i>S. solfataricus</i>	1.65	-	Verdon <i>et al.</i> , 2003
1OXT	<i>S. solfataricus</i>	2.10	-	Verdon <i>et al.</i> , 2003
1OXU	<i>S. solfataricus</i>	2.10	ADP, Mg ²⁺	Verdon <i>et al.</i> , 2003
1OXV	<i>S. solfataricus</i>	1.95	ANP, Mg ²⁺	Verdon <i>et al.</i> , 2003
1OXX	<i>S. solfataricus</i>	1.45	(G144A)	Verdon <i>et al.</i> , 2003
1Q1E	<i>E. coli</i>	2.90	-	Chen <i>et al.</i> , 2003
1Q1B	<i>E. coli</i>	2.80	-	Chen <i>et al.</i> , 2003
1Q12	<i>E. coli</i>	2.60	ATP	Chen <i>et al.</i> , 2003
1Z47	<i>A. acidocaldarius</i>	2.00	-	Scheffel <i>et al.</i> , 2005
1V43	<i>P. horikoshii</i>	2.20	-	Ose <i>et al.</i> , 2004
1VCI	<i>P. horikoshii</i>	2.90	ATP	Ose <i>et al.</i> , 2004
1MV5	<i>L. lactis</i>	3.10	ADP, ATP, Mg ²⁺	Yuan <i>et al.</i> , unpublished
1JIO	<i>T. maritima</i>	2.00	ATP	Zhang <i>et al.</i> , unpublished
3FVQ	<i>N. gonorrhoeae</i>	1.90	ATP	Newstead <i>et al.</i> , unpublished
3C41	<i>G. stearothermophilus</i>	2.25	ANP, Mg ²⁺	Thaben <i>et al.</i> , unpublished
3C4J	<i>G. stearothermophilus</i>	2.33	ATP, Mg ²⁺	Thaben <i>et al.</i> , unpublished
2OLJ	<i>G. stearothermophilus</i>	2.05	ADP, Mg ²⁺	Thaben <i>et al.</i> , unpublished
2OLK	<i>G. stearothermophilus</i>	2.00	ADP-β-S	Thaben <i>et al.</i> , unpublished
2OUK	<i>G. stearothermophilus</i>	2.15	-	Thaben <i>et al.</i> , unpublished
2GHI	<i>P. yoelii</i>	2.20		Vedadi <i>et al.</i> , 2007

References

- Atwell, S., Conners, K., Emtage, S., Gheyi, T., Lewis, H., Lu, F., Romero, R. & Zhao, X. (2007). *Pediatr Pulmonol Suppl* **30**, 100-101.
- Chen, J., Lu, G., Lin, J., Davidson, A.L. & Quioco, F.A. (2003). *Mol Cell* **12**, 651-661.
- Diederichs, K., Diez, J., Grellner, G., Muller, C., Breed, J., Schnell, C., Vonrhein, C., Boos, W. & Welte, W. (2000). *EMBO J* **19**, 5951-5961.
- Gaudet, R. & Wiley, D.C. (2001). *EMBO J* **20**, 4964-4972.
- Hung, L.W., Wang, I.X., Nikaido, K., Liu, P.Q., Ames, G.F. & Kim, S.H. (1998). *Nature* **396**, 703-707.
- Karpowich, N., Martsinkevich, O., Millen, L., Yuan, Y.R., Dai, P.L., MacVey, K., Thomas, P.J. & Lewis, H.A., Zhao, X., Wang, C., Sauder, J.M., Rooney, I., Noland, B.W., Lorimer, D., Kearins, M.C., Conners, K., Condon, B., Maloney, P.C., Guggino, W.B., Hunt, J.F., & Emtage, S. (2005). *J Biol Chem* **280**, 1346-1353.
- Lewis, H.A., Buchanan, S.G., Burley, S.K., Conners, K., Dickey, M., Dorwart, M., Fowler, R., Gao, X., Guggino, W.B., Hendrickson, W.A., Hunt, J.F., Kearins, M.C., Lorimer, D., Maloney, P.C., Post, K.W., Rajashankar, K.R., Rutter, M.E., Sauder, J.M., Shriver, S., Thibodeau, P.H., Thomas, P.J., Zhang, M., Zhao, X. & Emtage, S. (2004). *EMBO J* **23**, 282-293.
- Ose, T., Fujie, T., Yao, M., Watanabe, N. & Tanaka, I. (2004). *Proteins* **57**, 635-638.
- Oswald, C., Jenewein, S., Smits, S.H.J., Holland, I.B. & Schmitt, L. (2008). *J Struct Biol* **162**, 85-93.
- Procko, E., Ferrin-O'Connell, I., Ng, S.-L. & Gaudet, R. (2006). *Mol Cell* **24**, 51-62.
- Ramaen, O., Leulliot, N., Sizun, C., Ulryck, N., Pamard, O., Lallemand, J.-Y., Van Tilbeurgh, H. & Jacquet, E. (2006). *J Mol Biol* **359**, 940-949.
- Scheffel, F., Demmer, U., Warkentin, E., Schneider, E. & Ermler, U. (2005). *FEBS Lett* **579**, 2953-2958.
- Schmitt, L., Benabdelhak, H., Blight, M.A., Holland, I.B. & Stubbs, M.T. (2003). *J Mol Biol* **330**, 333-342.
- Smith, P.C., Karpowich, N., Millen, L., Moody, J.E., Rosen, J., Thomas, P.J. & Hunt, J.F. (2002). *Mol Cell* **10**, 139-149.
- Thibodeau, P.H., Brautigam, C.A., Machius, M. & Thomas, P.J. (2005). *Nat Struct Mol Biol* **12**, 10-16.

Vedadi, M., Lew, J., Artz, J., Amani, M., Zhao, Y., Dong, A., Wasney, G.A., Gao, M., Hills, T., Brokx, S., Qui, W., Sharma, S., Diassiti, A., Alam, Z., Melone, M., Mulichak, A., Wernimont, A., Bray, J., Loppnau, P., Plotnikova, O., Newberry, K., Sundararajan, E., Houston, S., Walker, J., Tempel, W., Bochkarev, A., Kozieradzki, I., Edwards, A., Arrowsmith, C., Roos, D., Kain, K., & Hui, R. (2007). Genome-scale protein expression and structural biology of *Plasmodium falciparum* and related Apicomplexan organisms. *Mol Biochem Parasitol* **151**, 100-110.

Verdon, G., Albers, S.V., Dijkstra, B.W., Driessen, A.J. & Thunnissen, A.M. (2003). *J Mol Biol* **330**, 343-358.

Yuan, Y.R., Blecker, S., Martsinkevich, O., Millen, L., Thomas, P.J. & Hunt, J.F. (2001). *J Biol Chem* **276**, 32313-32321.

Zaitseva, J., Jenewein, S., Jumpertz, T., Holland, I. B., & Schmitt, L. (2005). *EMBO J* **24**, 1901-1910.

Zaitseva, J., Oswald, C., Jumpertz, T., Jenewein, S., Wiedenmann, A., Holland, I.B. & Schmitt, L. (2006). *EMBO J* **25**, 3432-3443.