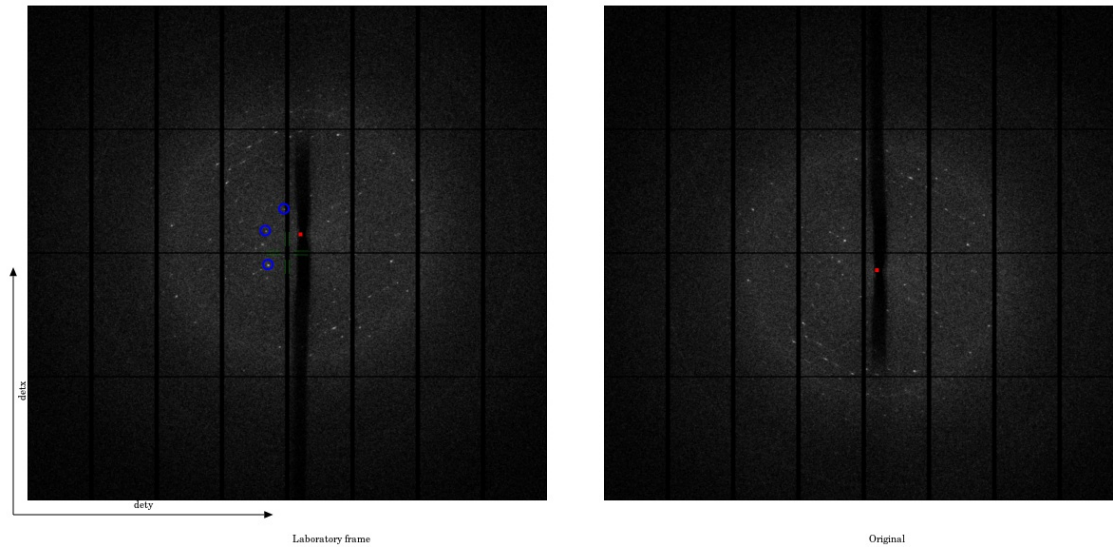


# checkImgCIF report

Powered by <https://github.com/jamesrhester/ImgCIFHandler.jl>

## Sample image



ImgCIF checker version 2022-08-04

Running checks (no image download)

=====

Testing: Required items: PASS

Testing: Data source: PASS

Testing: Axes defined: PASS

Testing: Our limitations: PASS

Testing: Detector translation: PASS

Testing: Scan range: PASS

Testing: All frames present: PASS  
All frames present and correct for SCAN1

Testing: Detector surface axes used properly: PASS

Testing: Pixel size and origin described correctly: PASS

Testing: Check calculated beam centre: PASS

Testing: Check principal axis is aligned with X: PASS

Testing: All archives are accessible: PASS

Running checks with downloaded images

=====

Testing image 4: Image type and dimensions: PASS

Testing image 4: Overloaded values present: PASS

====End of Checks====