

02072019 alykeaniline rxn

2.309  
2.325

ppm

5.96

3.0

3.5

4.0

4.5

5.0

5.5

6.0

6.5

7.0

7.5

8.0

8.5

7.581  
7.575  
7.568  
7.565  
7.560  
7.417  
7.410  
7.405  
7.402  
7.398  
7.388  
7.384  
7.378  
7.365  
7.297  
7.290  
7.284  
7.188  
7.162  
7.090  
7.084  
7.048  
7.041  
7.022  
7.014

1.97

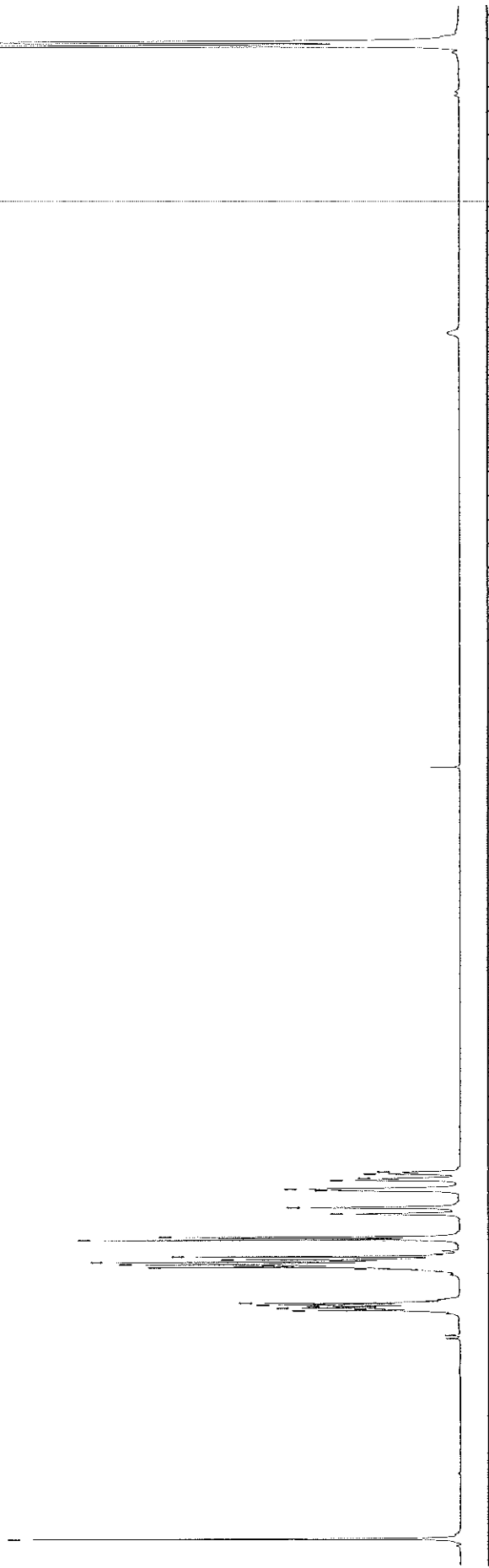
1.01

1.31

4.18

2.11

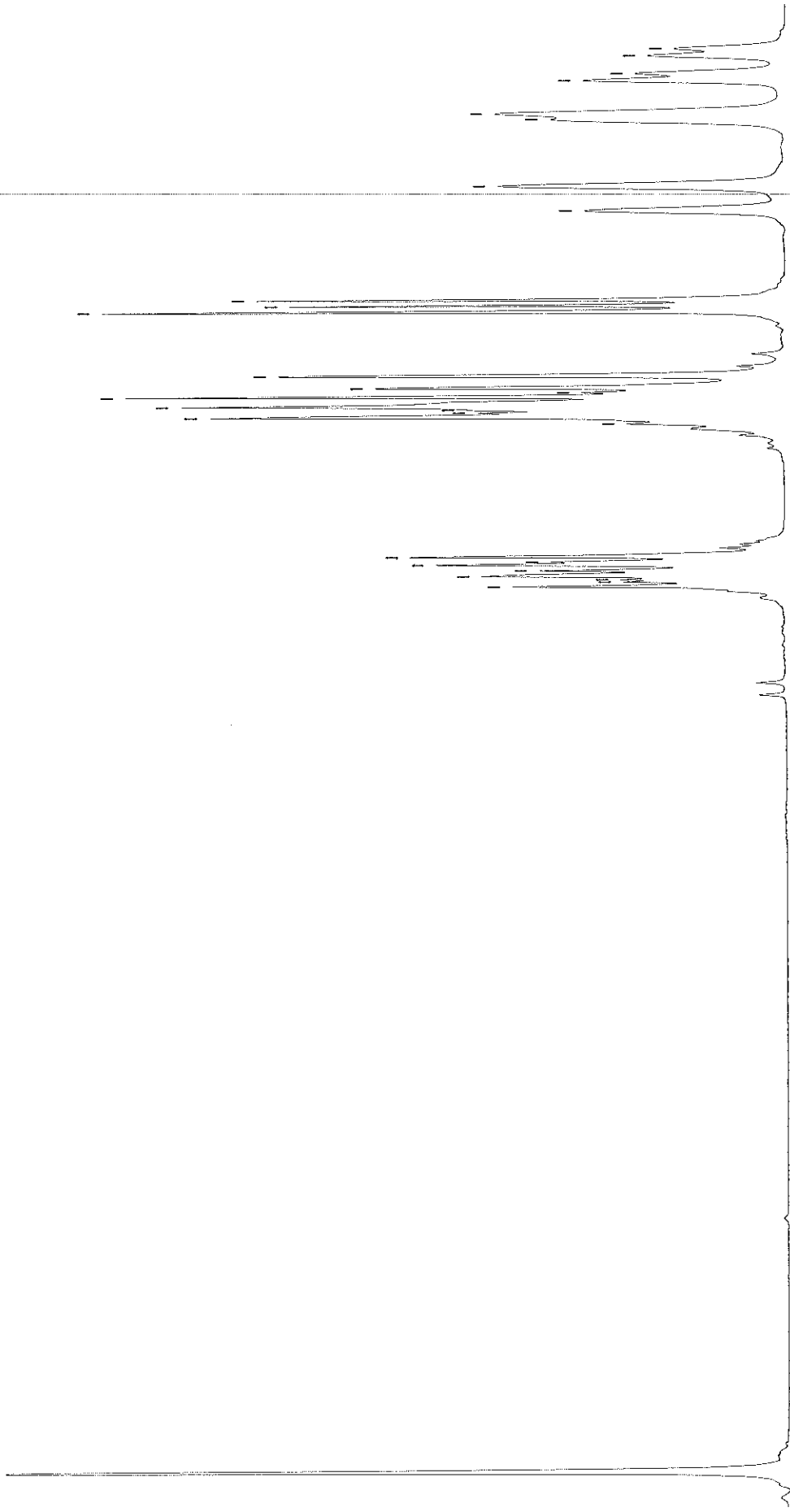
1.00



02072019 alykeaniline rxn

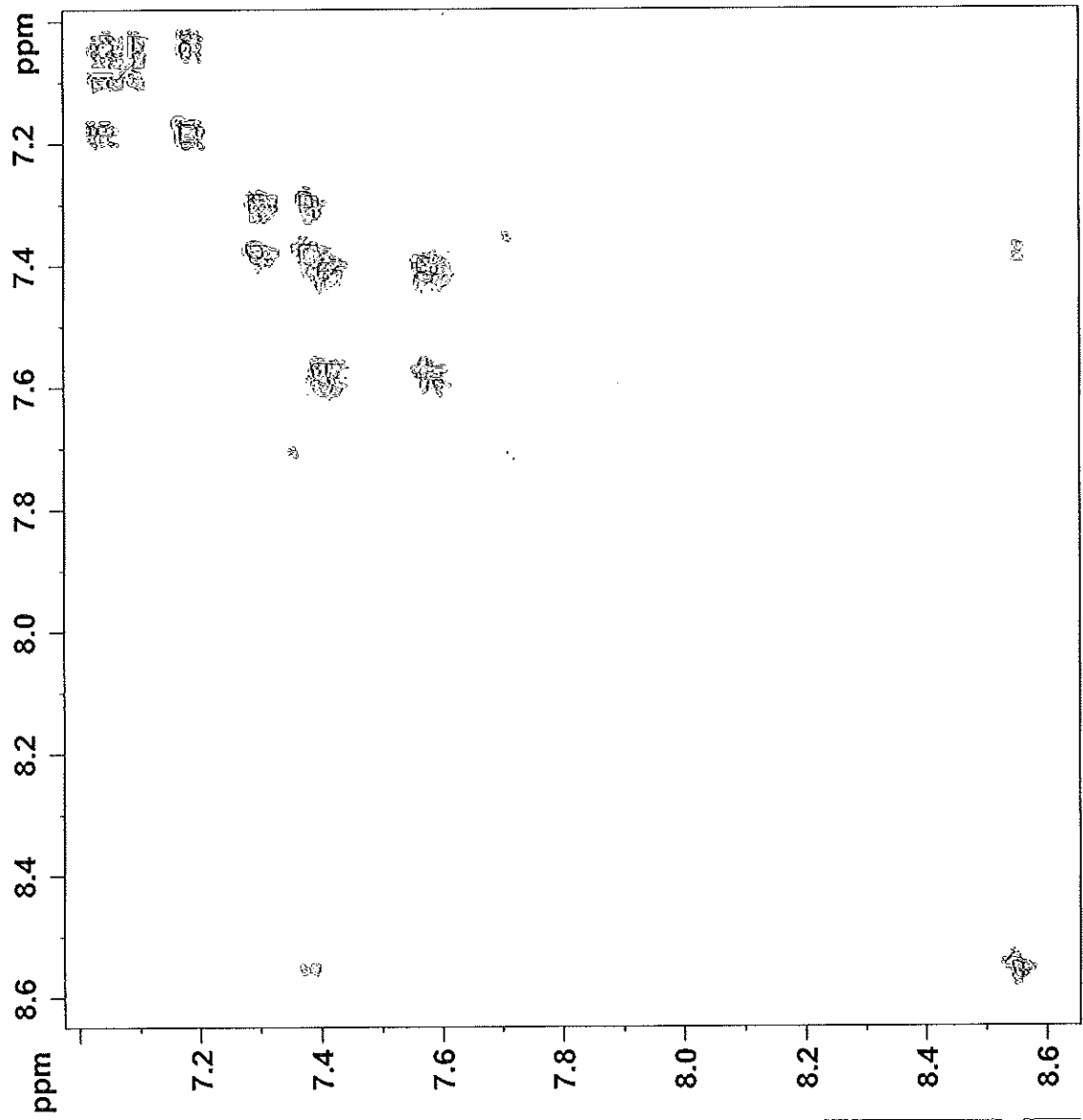
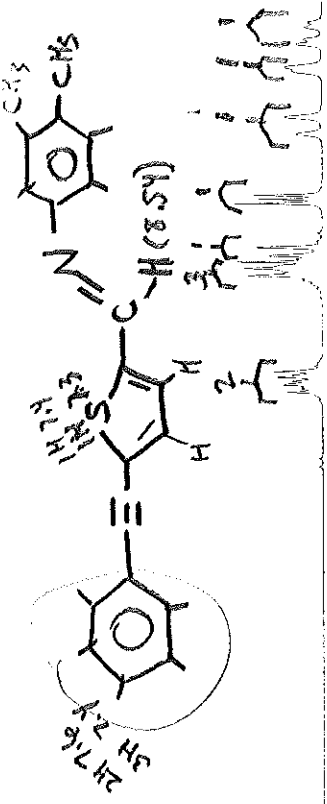
7.592  
7.587  
7.585  
7.581  
7.575  
7.568  
7.565  
7.560  
7.417  
7.410  
7.405  
7.402  
7.398  
7.388  
7.384  
7.378  
7.365  
7.297  
7.290  
7.284  
7.188  
7.162  
7.090  
7.084  
7.048  
7.041

8.544



1.00  
8.5  
8.4  
8.3  
8.2  
8.1  
8.0  
7.9  
7.8  
7.7  
7.6  
7.5  
7.4  
7.3  
7.2  
7.1  
1.97

02072019 alykeaniline rxn



Current Data Parameters  
NAME 02072019 alykeaniline rxn  
EXPNO 3  
PROCNO 1

F2 - Acquisition Parameters  
Date\_ 20190207  
Time 13.09  
INSTRUM spect  
PROBHD 5 mm PABO BB-  
PULPROG cosygpgf  
TD 2048  
SOLVENT CDCl<sub>3</sub>  
NS 1  
DS 8  
SWH 660.211 Hz  
FIDRES 0.322369 Hz  
AQ 1.5510187 sec  
RG 64  
DW 757.333 usec  
DE 6.50 usec  
TE 295.5 K  
D0 0.00000300 sec  
D1 1.48689198 sec  
D13 0.0000400 sec  
D16 0.0002000 sec  
RG 0.00151460 sec

==== CHANNEL f1 =====  
SF01 300.1323410 MHz  
NUC1 1H  
P0 7.31 usec  
P1 7.31 usec  
PLW1 10.60000038 W

==== GRADIENT CHANNEL =====  
GPNAM[1] SINE.100  
GPZ1 10.00 %  
PI6 1000.00 usec

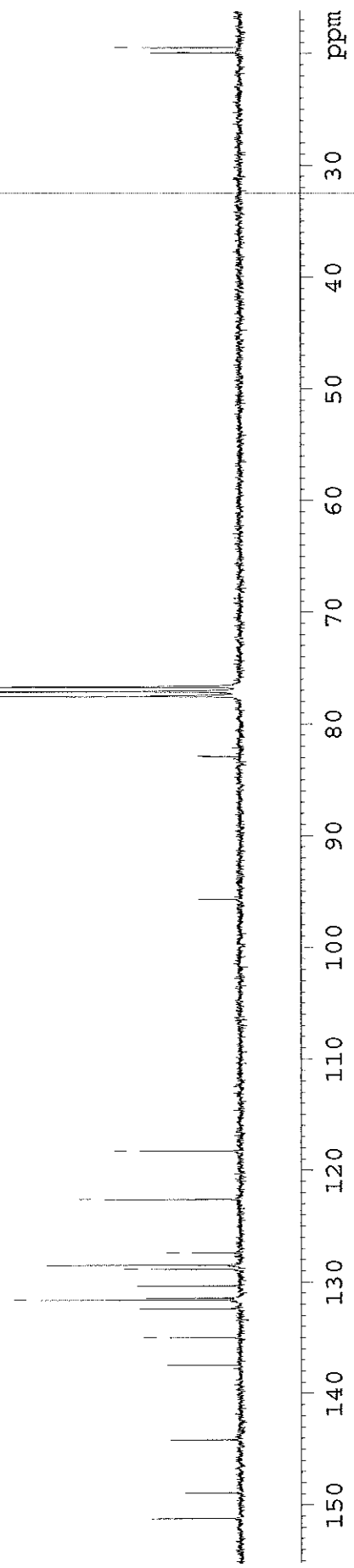
F1 - Acquisition parameters  
TD 128  
SF01 300.1323 MHz  
FIDRES 5.158128 Hz  
SW 2.200 ppm  
FMODE QF

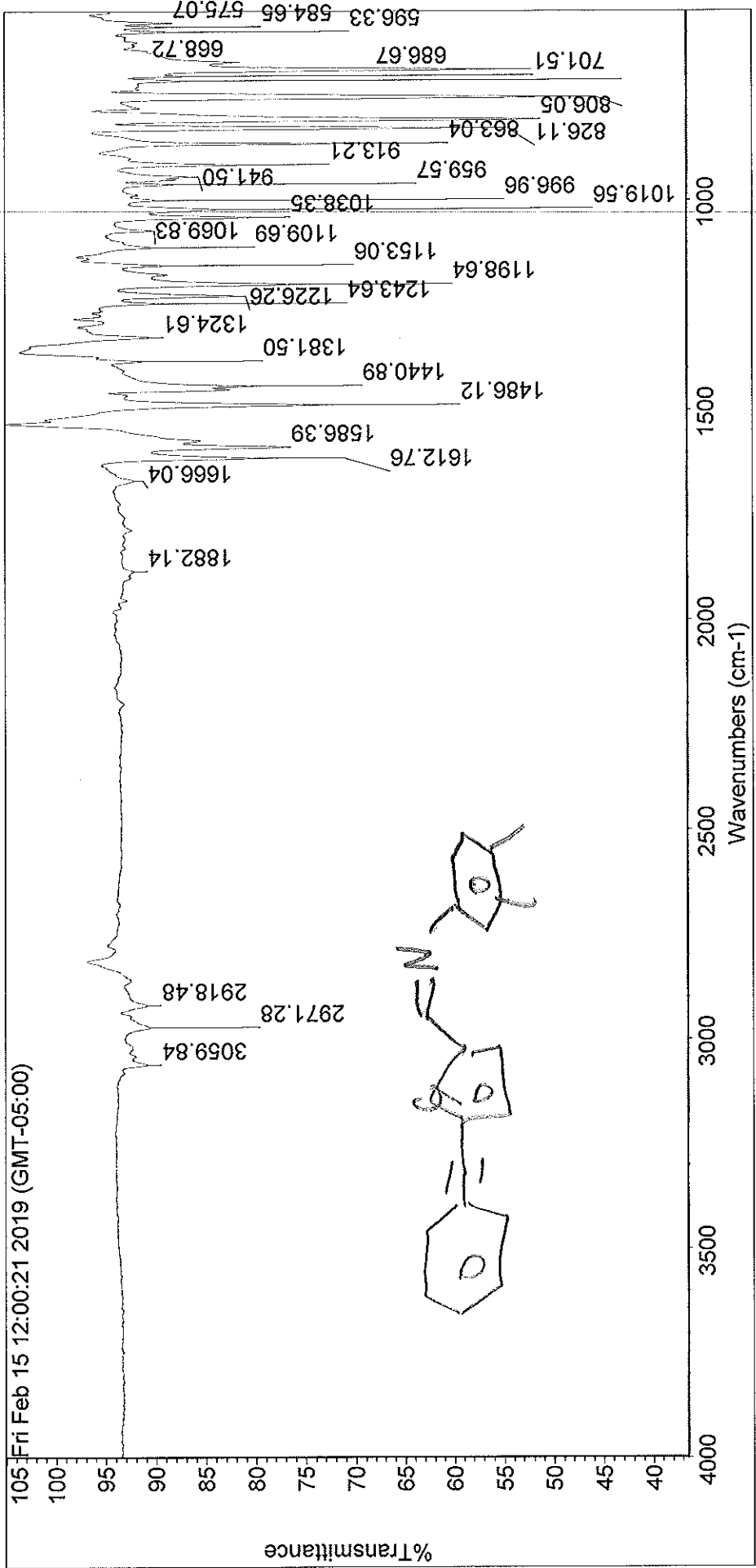
F2 - Processing parameters  
SI 1024  
SF 300.1300000 MHz  
WDW SINE  
SSB 0 Hz  
LB 0  
GB 0  
PC 1.40

F1 - Processing parameters  
SI 1024  
MCZ QF  
SF 300.1300000 MHz  
WDW SINE  
SSB 0 Hz  
LB 0  
GB 0

02072019 alykeaniline rxn

- 151.171
- 148.876
- 144.113
- 137.420
- 134.964
- 132.368
- 131.580
- 131.404
- 130.319
- 128.827
- 128.459
- 127.352
- 122.560
- 118.238
- 95.675
- 82.861
- 77.463
- 77.039
- 76.616
- 19.864
- 19.395





Fri Feb 15 12:01:46 2019 (GMT-05:00)

FIND PEAKS:

Spectrum: Fri Feb 15 12:00:21 2019 (GMT-05:00)

Region: 4000.12 550.10

Absolute threshold: 92.800

Sensitivity: 50

Peak list:

| Position: | Intensity: |
|-----------|------------|
| 575.07    | 88.912     |
| 584.65    | 89.114     |
| 596.33    | 88.115     |
| 668.72    | 82.120     |
| 686.67    | 55.441     |
| 701.51    | 86.817     |
| 712.78    | 86.678     |
| 753.00    | 51.043     |

|           |         |            |        |
|-----------|---------|------------|--------|
| Position: | 806.05  | Intensity: | 51.464 |
| Position: | 826.11  | Intensity: | 60.120 |
| Position: | 863.04  | Intensity: | 72.264 |
| Position: | 913.21  | Intensity: | 81.116 |
| Position: | 941.50  | Intensity: | 86.458 |
| Position: | 959.57  | Intensity: | 88.065 |
| Position: | 996.96  | Intensity: | 89.997 |
| Position: | 1019.56 | Intensity: | 83.713 |
| Position: | 1038.35 | Intensity: | 79.716 |
| Position: | 1069.83 | Intensity: | 90.126 |
| Position: | 1109.69 | Intensity: | 90.115 |
| Position: | 1153.06 | Intensity: | 88.876 |
| Position: | 1198.64 | Intensity: | 76.688 |
| Position: | 1226.26 | Intensity: | 81.666 |
| Position: | 1243.64 | Intensity: | 89.862 |
| Position: | 1324.61 | Intensity: | 90.338 |
| Position: | 1381.50 | Intensity: | 91.307 |
| Position: | 1440.89 | Intensity: | 80.455 |
| Position: | 1486.12 | Intensity: | 74.082 |
| Position: | 1586.39 | Intensity: | 76.286 |
| Position: | 1612.76 | Intensity: | 80.372 |
| Position: | 1666.04 | Intensity: | 92.134 |
| Position: | 1882.14 | Intensity: | 92.055 |
| Position: | 2918.48 | Intensity: | 90.864 |
| Position: | 2971.28 | Intensity: | 90.598 |
| Position: | 3059.84 | Intensity: | 90.814 |