
Supporting information for

Crystal structure of the nucleoside 2'-deoxyguanosine

Bernhard Spingler*

Department of Chemistry, University of Zurich, Winterthurerstr 190, Zürich, 8057, Switzerland

Correspondence email: spingler@chem.uzh.ch

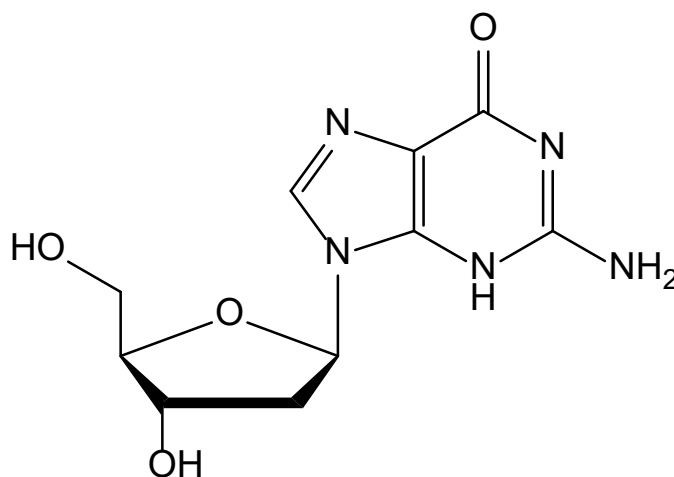


Figure S1 Incorrect Lewis structure of 2'-deoxyguanosine, which is used as a reference structure (identifier GNG) in the ligand database (Ligand Expo) of the Protein Database.

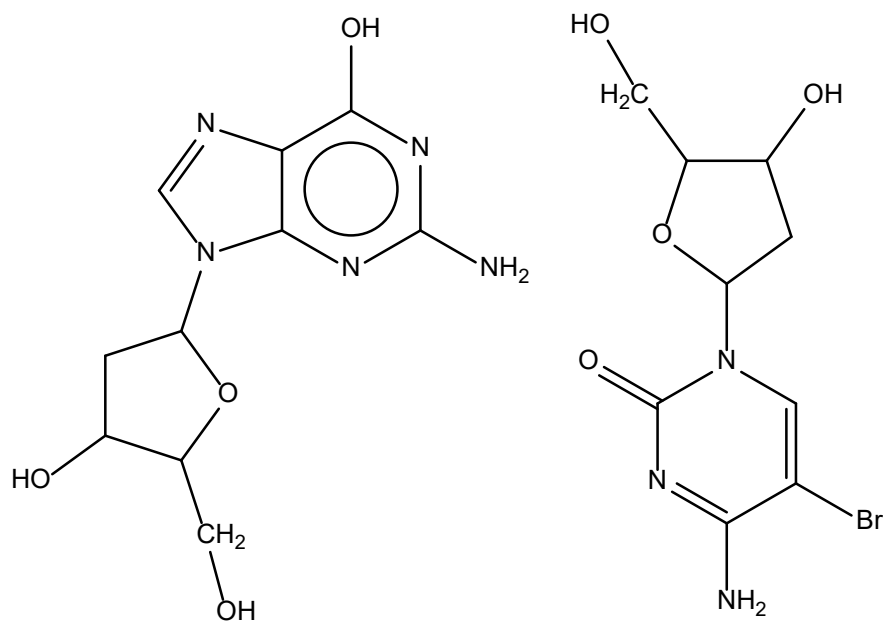


Figure S2 Incorrectly drawn Lewis structure in the Cambridge Structure Database (CSD version 5.44, April 2023) of entry DGUBCY (2'-deoxyguanosine together with 5-bromo-2'-deoxycytidine).