

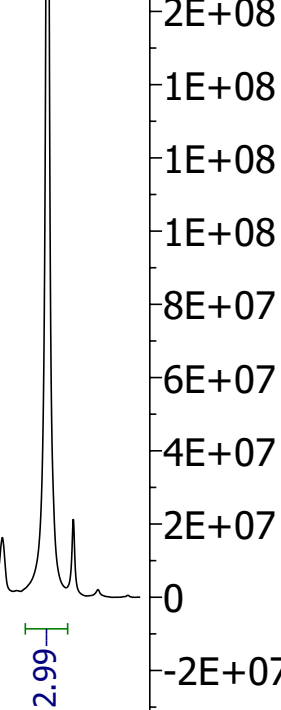
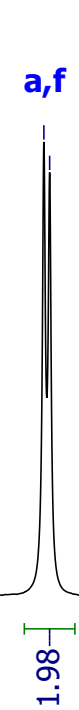
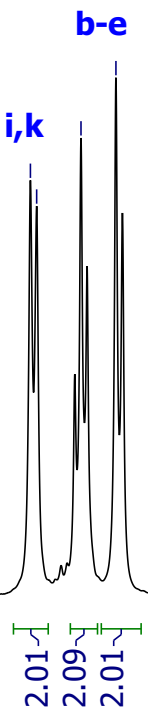
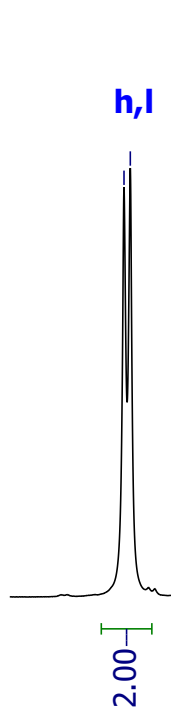
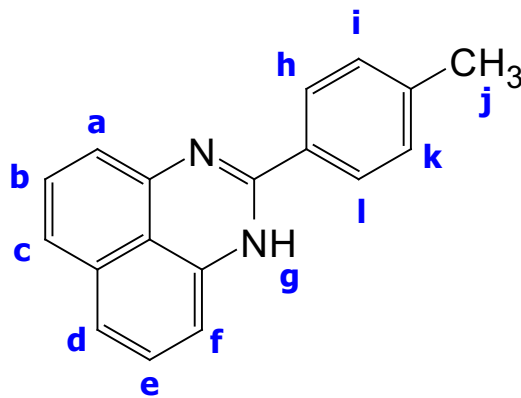
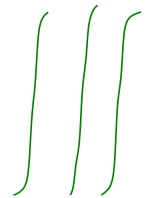
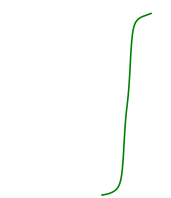
KP156

7.96  
7.94

7.31  
7.29  
7.15  
7.04

6.66  
6.65

2.34  
j



8.0 7.4 6.8 6.2 5.6 5.0 4.4 3.8 3.2 2.6

f1 (MD)

3E+08  
3E+08  
3E+08  
3E+08  
2E+08  
2E+08  
2E+08  
2E+08  
2E+08  
1E+08  
1E+08  
1E+08  
8E+07  
6E+07  
4E+07  
2E+07  
0  
-2E+07