

LG09-CDC13-1H



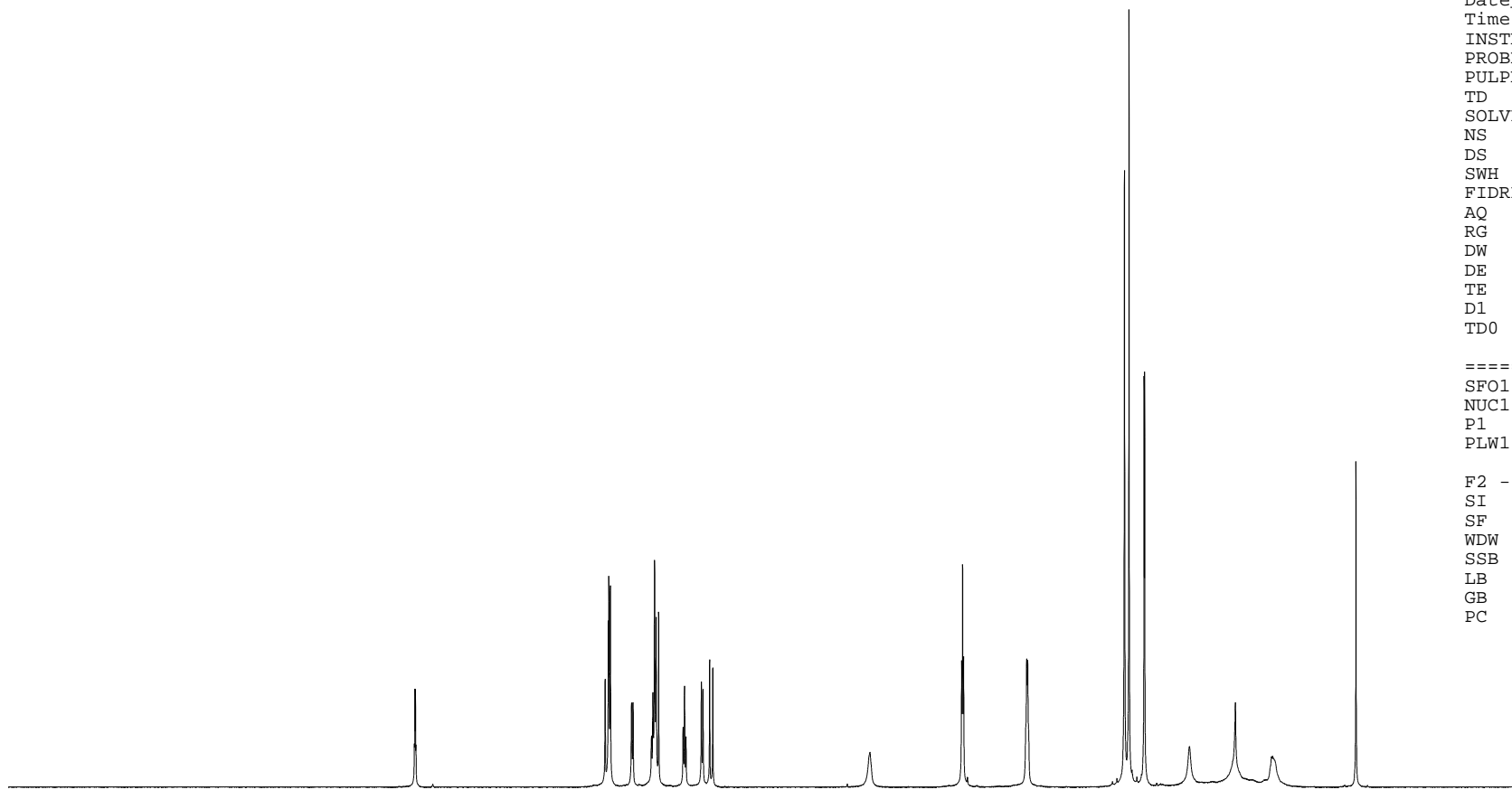
9.806
 9.800
 9.794
 9.789
 7.819
 7.785
 7.781
 7.764
 7.545
 7.543
 7.530
 7.527
 7.338
 7.336
 7.321
 7.304
 7.288
 7.261
 7.007
 6.992
 6.977
 6.816
 6.800
 6.730
 6.698
 5.061
 4.107
 4.096
 4.086
 3.429
 3.418
 2.411
 2.364
 2.206
 2.200
 1.734
 1.255
 0.880
 0.869
 0.859
 -0.000

Current Data Parameters
 NAME DAT_LG09
 EXPNO 10
 PROCNO 1

F2 - Acquisition Parameters
 Date_ 20200924
 Time 17.33
 INSTRUM spect
 PROBHD 5 mm PABBO BB/
 PULPROG zg30
 TD 65536
 SOLVENT CDC13
 NS 16
 DS 2
 SWH 10000.000 Hz
 FIDRES 0.152588 Hz
 AQ 3.2767999 sec
 RG 157.35
 DW 50.000 usec
 DE 6.50 usec
 TE 301.9 K
 D1 1.00000000 sec
 TD0 1

==== CHANNEL f1 =====
 SFO1 500.2420892 MHz
 NUC1 1H
 P1 10.20 usec
 PLW1 22.00000000 W

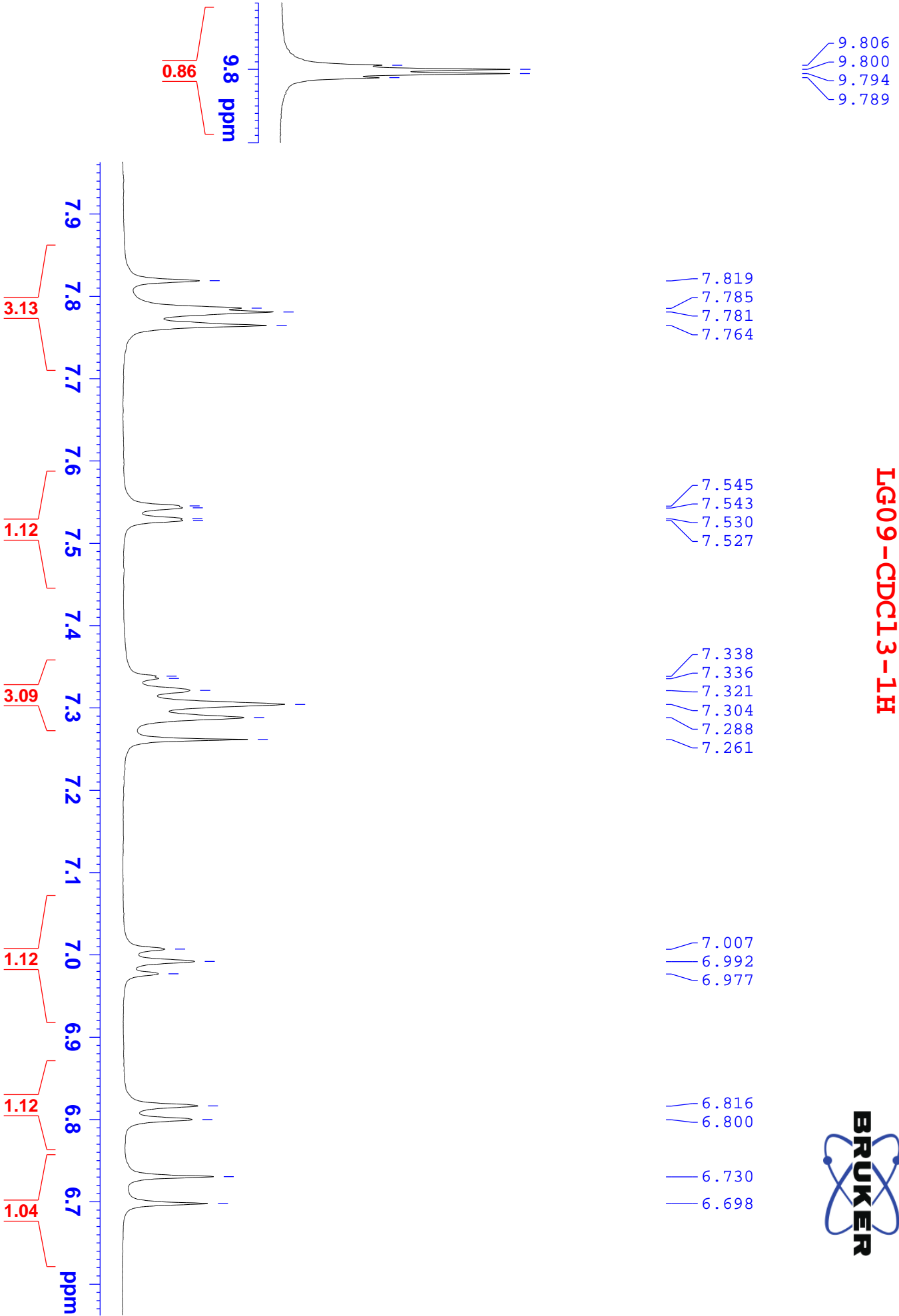
F2 - Processing parameters
 SI 65536
 SF 500.2390125 MHz
 WDW EM
 SSB 0
 LB 0.30 Hz
 GB 0
 PC 1.00



13 12 11 10 9 8 7 6 5 4 3 2 1 0 ppm

0.86
3.13
1.12
3.09
1.12
1.12
1.04
1.02
2.20
2.25
6.77
3.00

LG09-CDCl3-1H



LG09-CDCl3-1H

