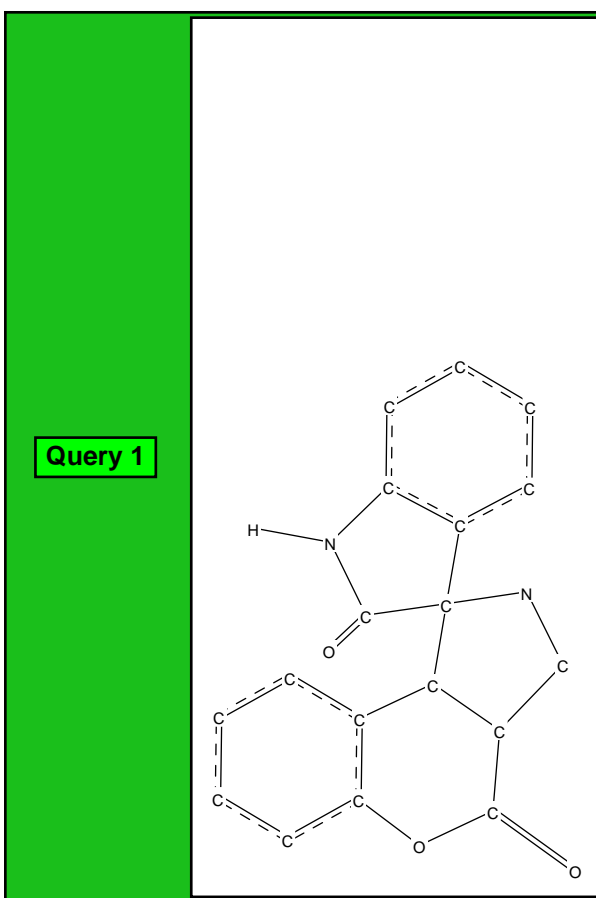


Search Overview

Search: search2
Date/Time done: Sat Dec 29 16:55:50 2018
Database(s): CSD version 5.39 updates (Nov 2017)
CSD version 5.39 (November 2017)
CSD version 5.39 (November 2017)
CSD version 5.39 updates (Feb 2018)
CSD version 5.39 updates (May 2018)
CSD version 5.39 updates (Aug 2018)
Restriction Info: No refcode restrictions applied
Filters: None
Percentage Completed: 100%
Number of Hits: 3

Single query used. Search found structures that:

match
Query 1



GUCGIW

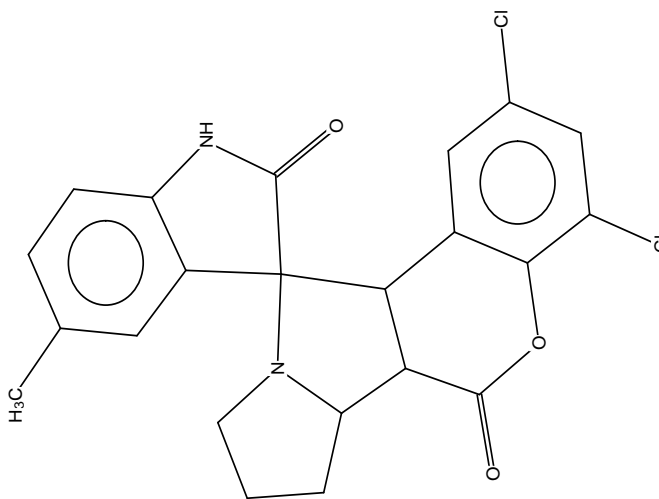
Reference: S.Kanchithalaivan, R.V.Suresh, R.R.Kumar (2014) ACS Comb. Sci. ,16,566

Formula: C₂₂ H₁₈ Cl₂ N₂ O₃,H₂ O₁

Compound Name: 2,4-Dichloro-5-methyl-6a,6b,7,8,9,11a-hexahydro-6H-spiro[chromeno]3,4-pyrrolizine-1,3'-indole]-2,6'(1'H)-dione monohydrate

Space Group: P2₁/c **Cell:** a 12.301(0) b 18.849(0) c 10.439(0)
Space Group No.: 14 **(A,°)** α 90.00 β 98.50(0) γ 90.00

R-Factor (%): 8.13 **Temperature(K):** 293 **Density(g/cm³):** 1.241



Parameters

Fragment 1
ANG1 (A) 82.853

H₂O

SUTLAV

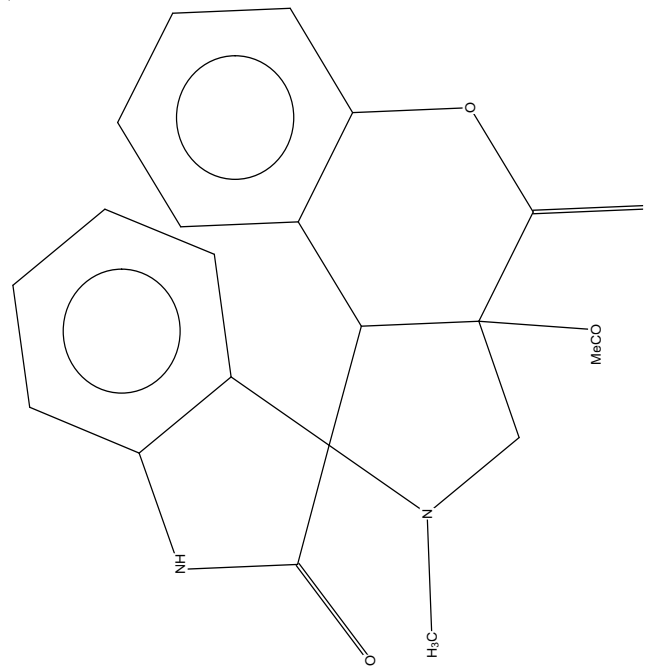
Reference: M.Ghandi, A.Taheri, A.Abbasi (2010) Tetrahedron 66, 6744

Formula: C₂₁ H₁₈ N₂ O₄

Compound Name: 3a-Acetyl-2-methyl-2,3,3a,9b-tetrahydro-4H-spiro[chromeno]3,4-c]pyrrole-1,3'-indole]-2,4'(1'H)-dione

Space Group: P-1 **Cell:** a 8.542(1) b 8.660(1) c 12.791(3)
Space Group No.: 2 **(A,°)** α 107.43(3) β 91.16(1) γ 101.93(2)

R-Factor (%): 6.52 **Temperature(K):** 295 **Density(g/cm³):** 1.368



Parameters

Fragment 1
ANG1 (A) 87.655

SUTLEZ

Reference: M.Ghandi, A.Taheri, A.Abbasi (2010) *Tetrahedron*, **66**, 6744

Formula: C₁₉ H₁₅ Br₁ N₂ O₃

Compound Name: 8-Bromo-2-methyl-1,2,3,3a,9b-tetrahydro-4H-spiro[chromeno[3,4-c]pyrrole-1,3'-indole]-2,4(1'H)-dione

Space Group: P2₁/c **Cell:** **a** 10.859(2) **b** 13.440(3) **c** 11.917(2)

Space Group No.: 14 **(A, °)** α 90.00 β 105.14(3) γ 90.00

R-Factor (%): 6.51 **Temperature(K):** 295 **Density(g/cm³):** 1.580

Parameters
Fragment 1
ANG1 (A) 86.597

