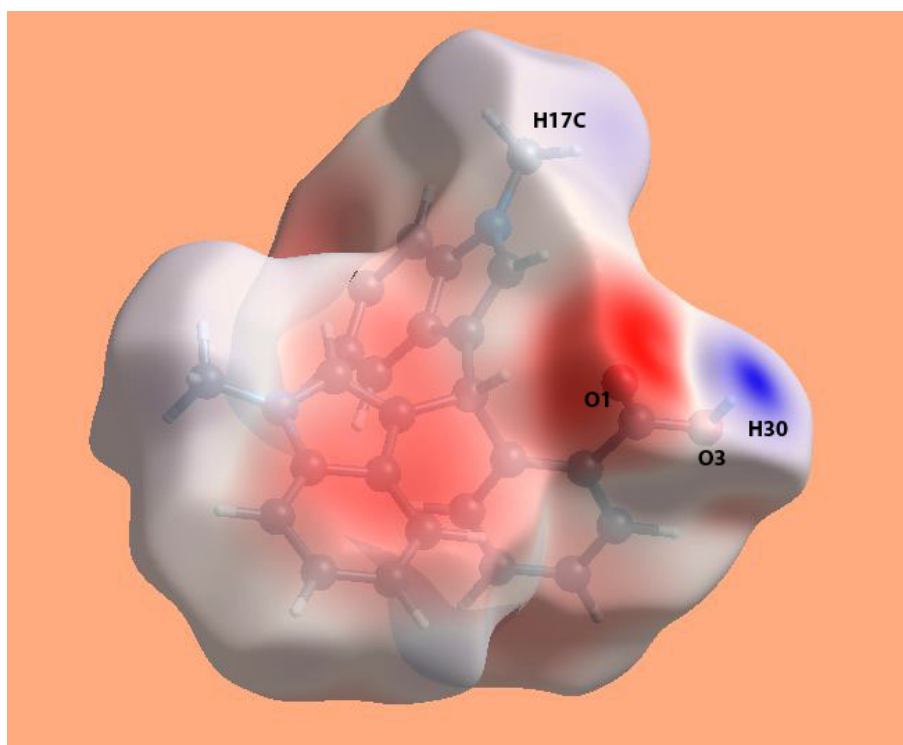
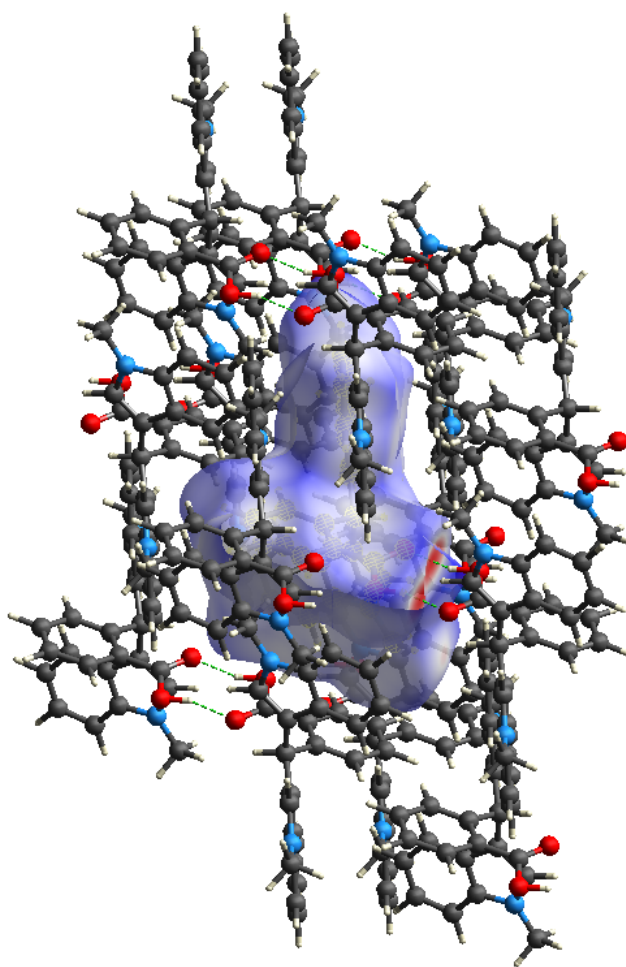


Supplementary material



The views of the Hirshfeld surface of the title compound mapped over the electrostatic potential in the range  $\pm 0.046$  au.



A view of the Hirshfeld surface of the title compound mapped over  $d_{\text{norm}}$  in the range -0.6842 to +1.4524 au. highlighting C...H/H...C contact by green dashed line.