

Supporting information

Crystal structure of Zn complex with terephthalate and 1,6-bis(1,2,4-triazol-1-yl)hexane, DMF solvate

by T.S. Sukhikh, E. Yu. Semitut and A. S. Potapov

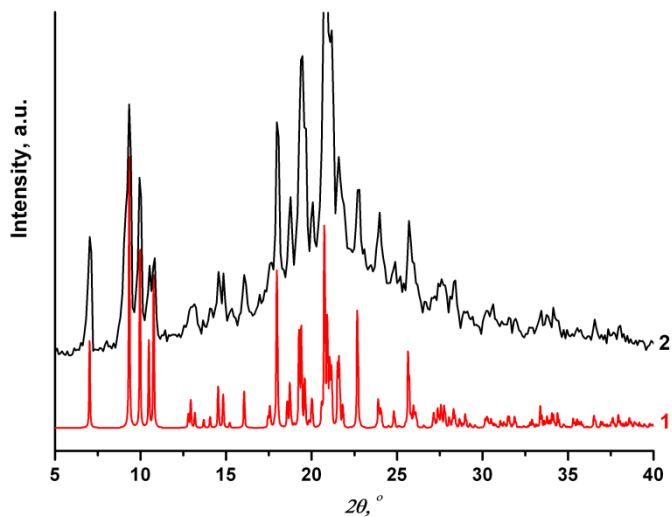


Figure S1. The XRD patterns of $[\text{Zn}(\text{btrh})(\text{bdc})]\cdot n\text{DMF}$: 1 – simulated from single crystal data, 2 – polycrystalline sample.

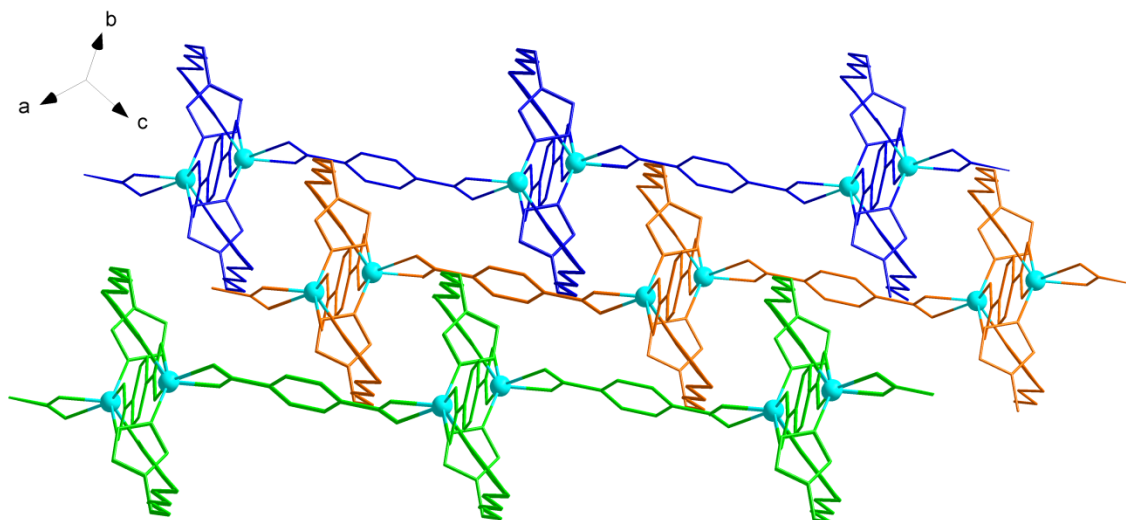


Figure S2. Relative arrangement of the layers of the coordination polymer. Different layers are colored with orange, green and blue. H atoms are not shown for clarity.

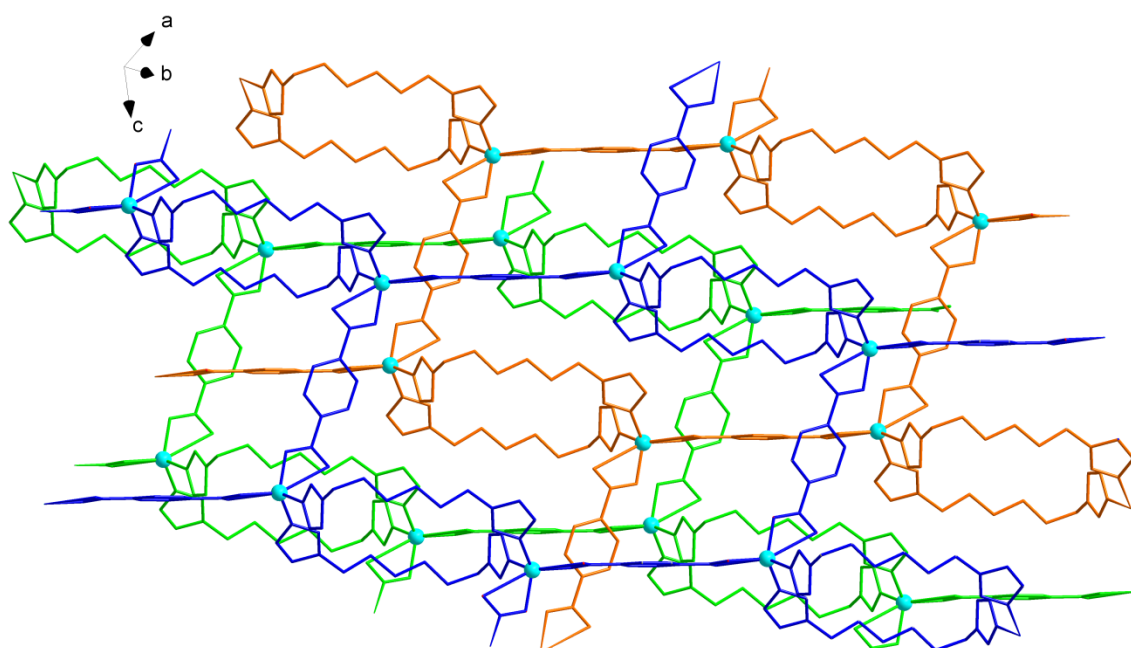


Figure S3. Relative arrangement of the layers of the coordination polymer. Different layers are colored with orange, green and blue. H atoms are not shown for clarity.

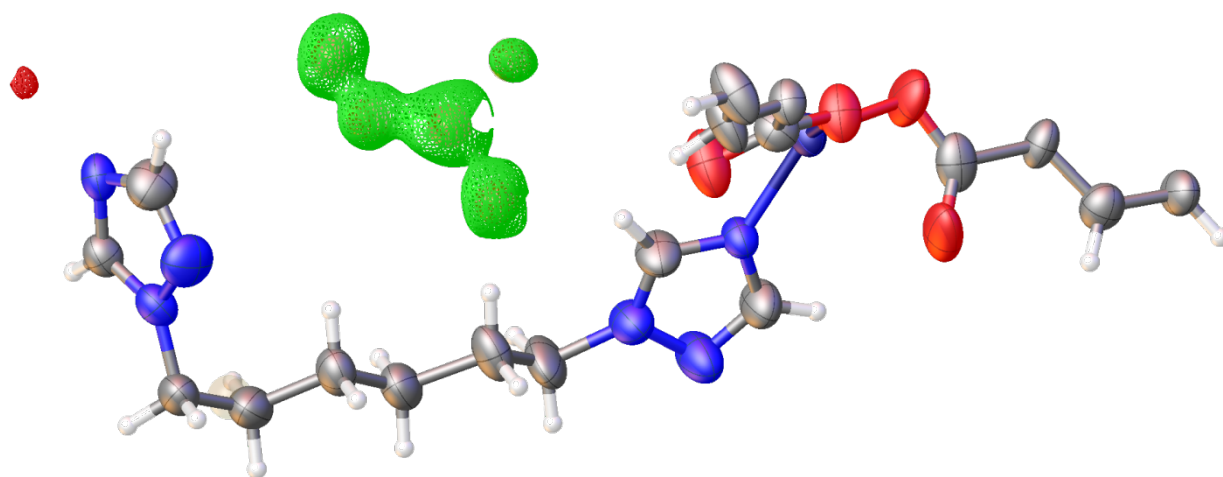


Figure S4. Residual electron density map for the structure $[\text{Zn}(\text{btrh})(\text{bdc})]$ without solvent DMF: green - negative, red - positive.

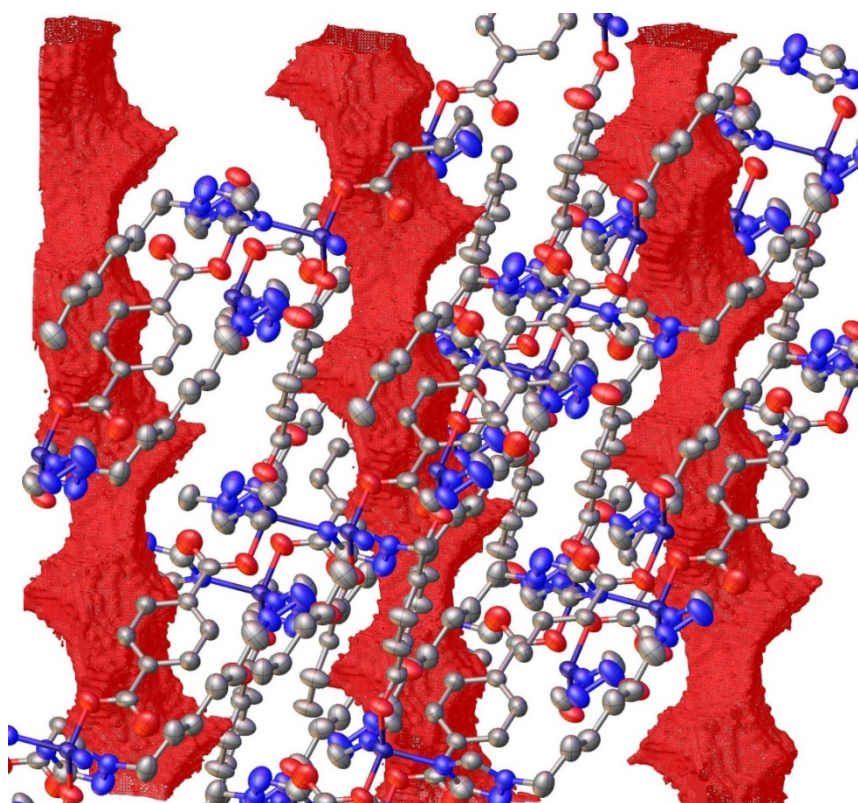


Figure S5. Representation of channel voids in the structure where DMF solvent molecules are located. H atoms and solvent molecules are not shown.

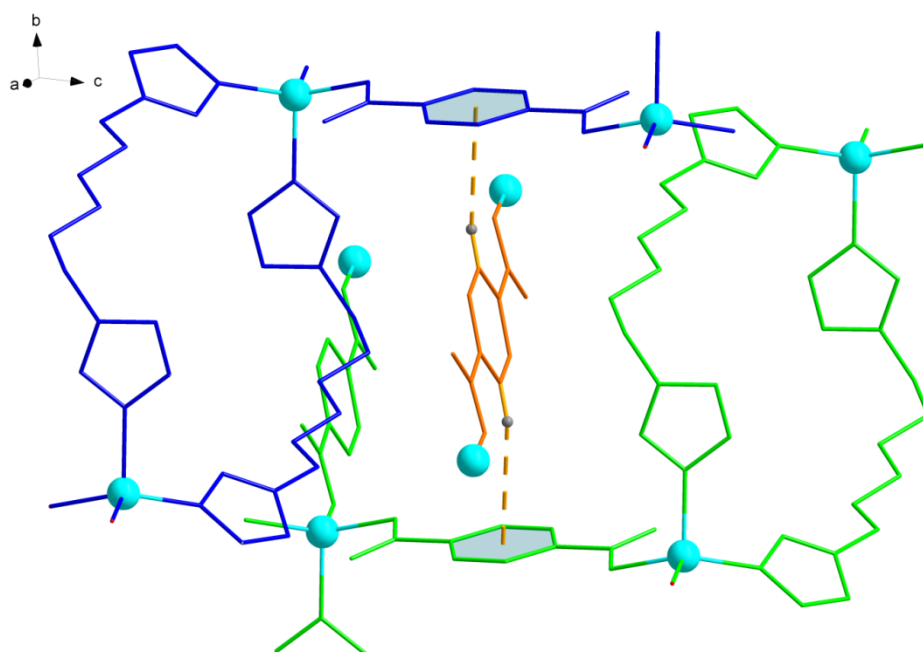


Fig. S6. Representation of fragment of the structure, showing CH \cdots π contacts (marked dashed). Different layers are colored with orange, green and blue. H atoms are not shown for clarity.