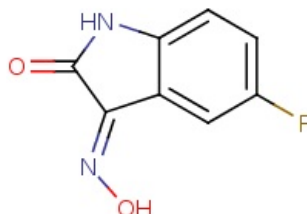


# SwissTargetPrediction report:

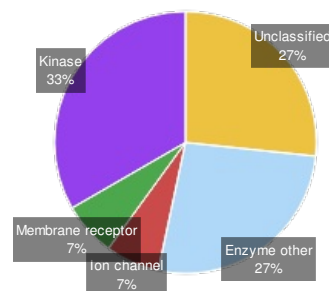
## Reference:

Gfeller D., Michielin O. & Zoete V.  
 Shaping the interaction landscape of  
 bioactive molecules, *Bioinformatics*  
 (2013) 29:3073-3079.

## Query Molecule



## Frequency of Target Class



Target	Uniprot ID	Gene code	ChEMBL ID	Probability	# sim. cmpds (3D / 2D)	Target Class
Muscleblind-like protein 1	Q9NR56	MBNL1	CHEMBL1293317	<div><div></div></div>	4 / 7	Unclassified
Muscleblind-like protein 2 ( <i>by homology</i> )	Q5VZF2	MBNL2		<div><div></div></div>	4 / 7	Unclassified
Muscleblind-like protein 3 ( <i>by homology</i> )	Q9NUK0	MBNL3		<div><div></div></div>	4 / 7	Unclassified
Microtubule-associated protein tau	P10636	MAPT	CHEMBL1293224	<div><div></div></div>	8 / 29	Unclassified
FAD-linked sulphhydryl oxidase ALR	P55789	GFER	CHEMBL1741189	<div><div></div></div>	3 / 3	Enzyme
Glutamate receptor ionotropic, NMDA 1	Q05586	GRIN1	CHEMBL2015	<div><div></div></div>	40 / 3	Ion channel
Muscarinic acetylcholine receptor M1 ( <i>by homology</i> )	P11229	CHRM1	CHEMBL216	<div><div></div></div>	3 / 10	Membrane receptor
Aldo-keto reductase family 1 member B15 ( <i>by homology</i> )	C9JRZ8	AKR1B15		<div><div></div></div>	1 / 15	Enzyme
Aldo-keto reductase family 1 member B10 ( <i>by homology</i> )	O60218	AKR1B10	CHEMBL5983	<div><div></div></div>	1 / 15	Enzyme
Aldose reductase ( <i>by homology</i> )	P15121	AKR1B1	CHEMBL1900	<div><div></div></div>	1 / 15	Enzyme
Proto-oncogene tyrosine-protein kinase Src	P12931	SRC	CHEMBL267	<div><div></div></div>	1 / 1	Tyr Kinase
Tyrosine-protein kinase Fyn ( <i>by homology</i> )	P06241	FYN	CHEMBL1841	<div><div></div></div>	1 / 1	Tyr Kinase
Tyrosine-protein kinase Yes ( <i>by homology</i> )	P07947	YES1	CHEMBL2073	<div><div></div></div>	1 / 1	Tyr Kinase
Tyrosine-protein kinase Fgr ( <i>by homology</i> )	P09769	FGR	CHEMBL4454	<div><div></div></div>	1 / 1	Tyr Kinase
Tyrosine-protein kinase FRK ( <i>by homology</i> )	P42685	FRK	CHEMBL4223	<div><div></div></div>	1 / 1	Tyr Kinase