



FOUNDATIONS
ADVANCES

Volume 74 (2018)

Supporting information for article:

**Blind lattice parameter determination of cubic and tetragonal
phases with high accuracy using a single EBSD pattern**

**Ming Han, Chen Chen, Guangming Zhao, Lili Li, Gert Nolze, Baojun Yu,
Xiaodong Huang and Ye Zhu**

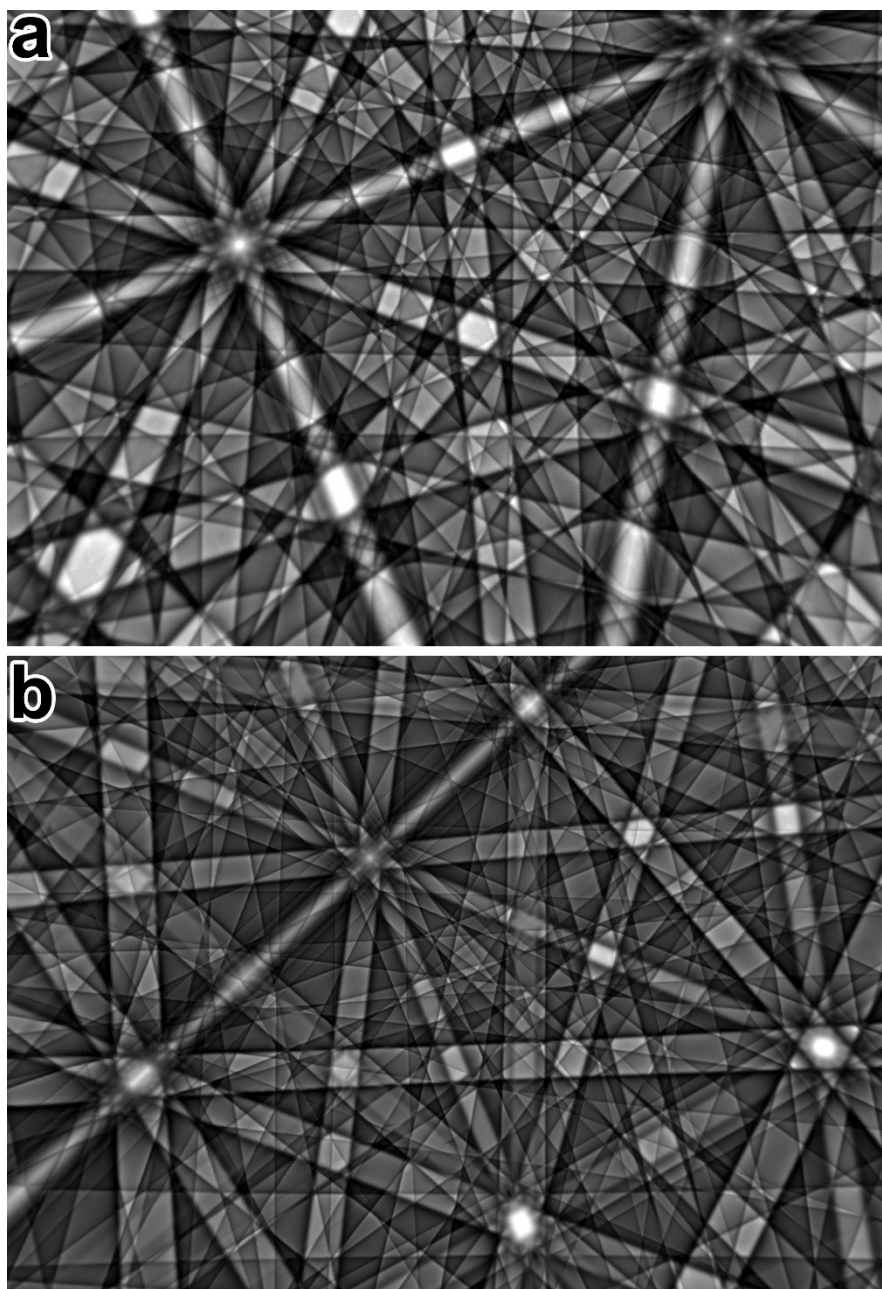


Figure S1 Simulated patterns based on the experimental patterns shown in Fig. 3: (a) ferrite and (b) rutile.