



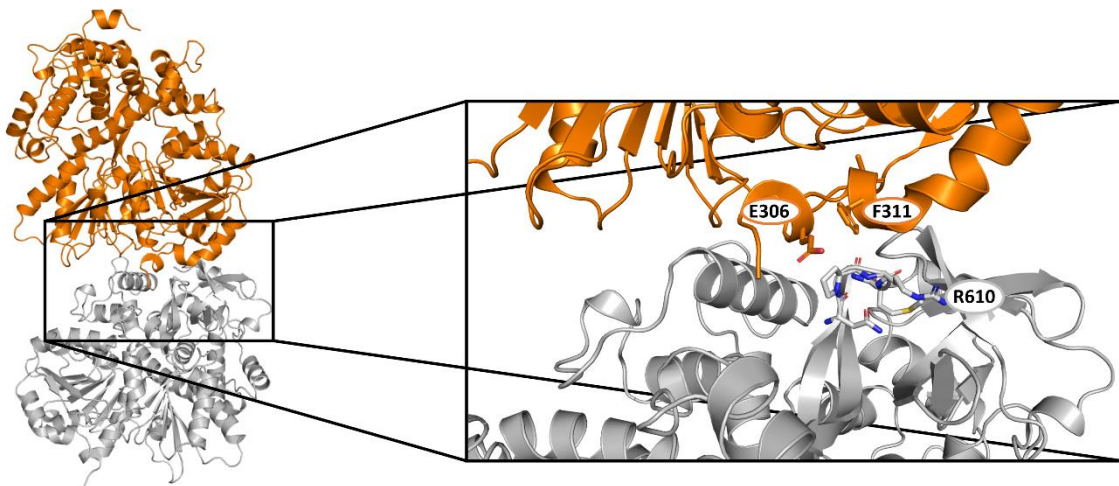
STRUCTURAL BIOLOGY  
COMMUNICATIONS

**Volume 79 (2023)**

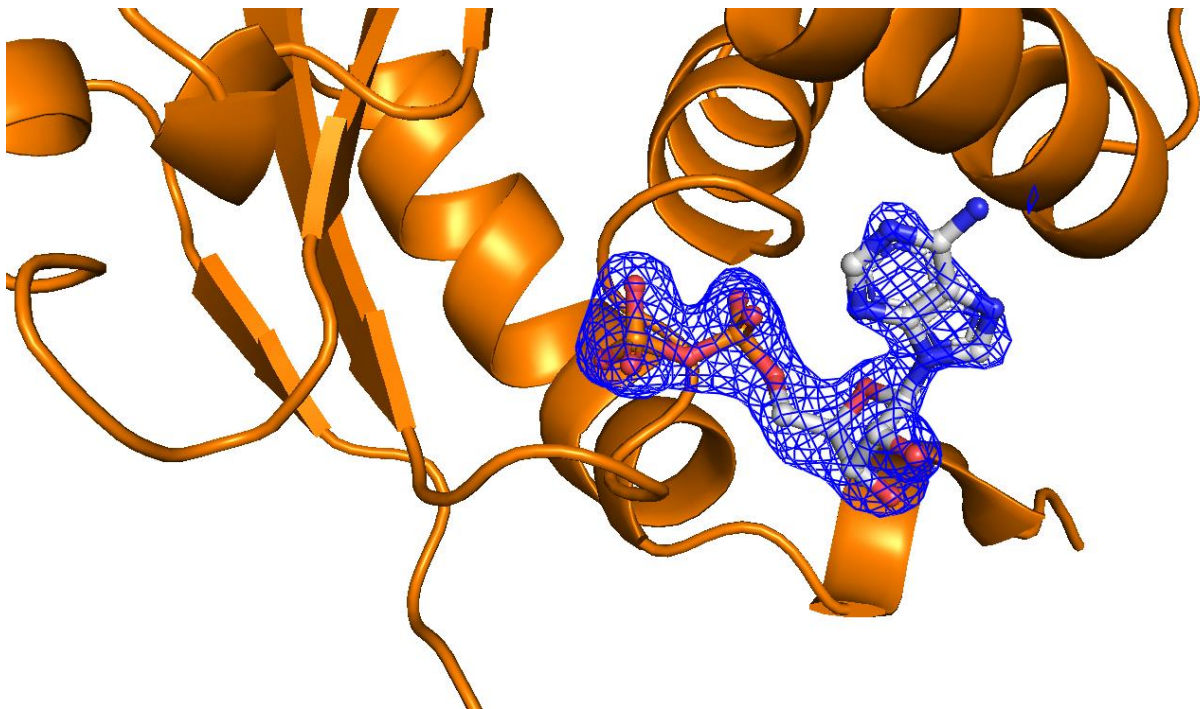
**Supporting information for article:**

**Crystal structure of Prp16 in complex with ADP**

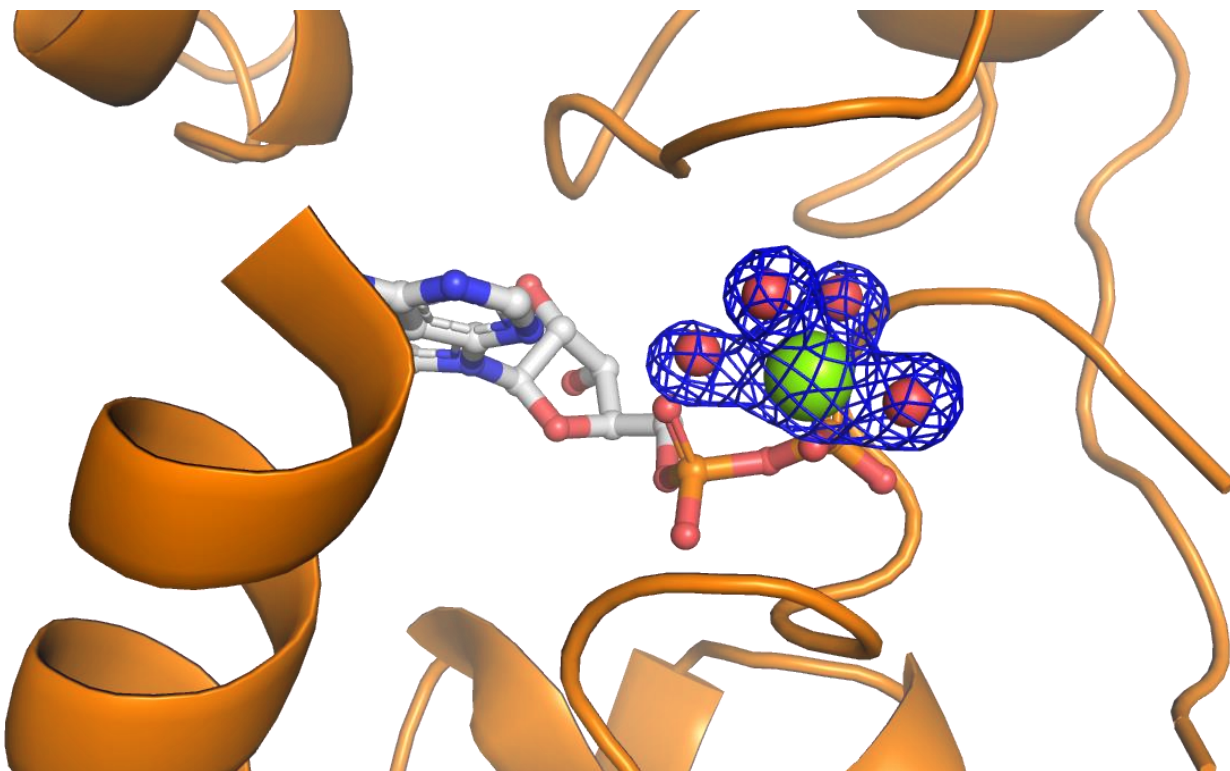
**Tim Benedict Garbers, Marieke Enders, Piotr Neumann and Ralf Ficner**



**Figure S1** Interaction of Prp16 with a symmetry mate. Prp16 molecules are shown as cartoon and coloured in grey and orange. Residues of the N-terminal part and of the loop region between the  $\beta$ -strands forming the  $\beta$ -hairpin are depicted as sticks and N-atoms are coloured in blue while O-atoms are coloured in red.



**Figure S2** Polder omit map of ADP. The  $|F_o - F_c|$  electron density map is contoured at  $3\sigma$  is depicted for the ADP molecule (shown as sticks and balls) bound Prp16. The protein is depicted as cartoon and coloured in orange. Parts of the RecA2-like domain are omitted.



**Figure S3** Polder omit map of water molecules which are part of magnesium interaction network. The  $|F_o - F_c|$  electron density map is contoured at  $4\sigma$  is depicted for the magnesium (green sphere) and four water molecules (red sphere). Prp16 is depicted as cartoon and coloured in orange. Parts of the RecA2-like domain are omitted.