



STRUCTURAL BIOLOGY
COMMUNICATIONS

Volume 78 (2022)

Supporting information for article:

Crystallization and low-resolution structure solution of the SALM3–PTP σ synaptic adhesion complex

Sudeep Karki and Tommi Kajander

:

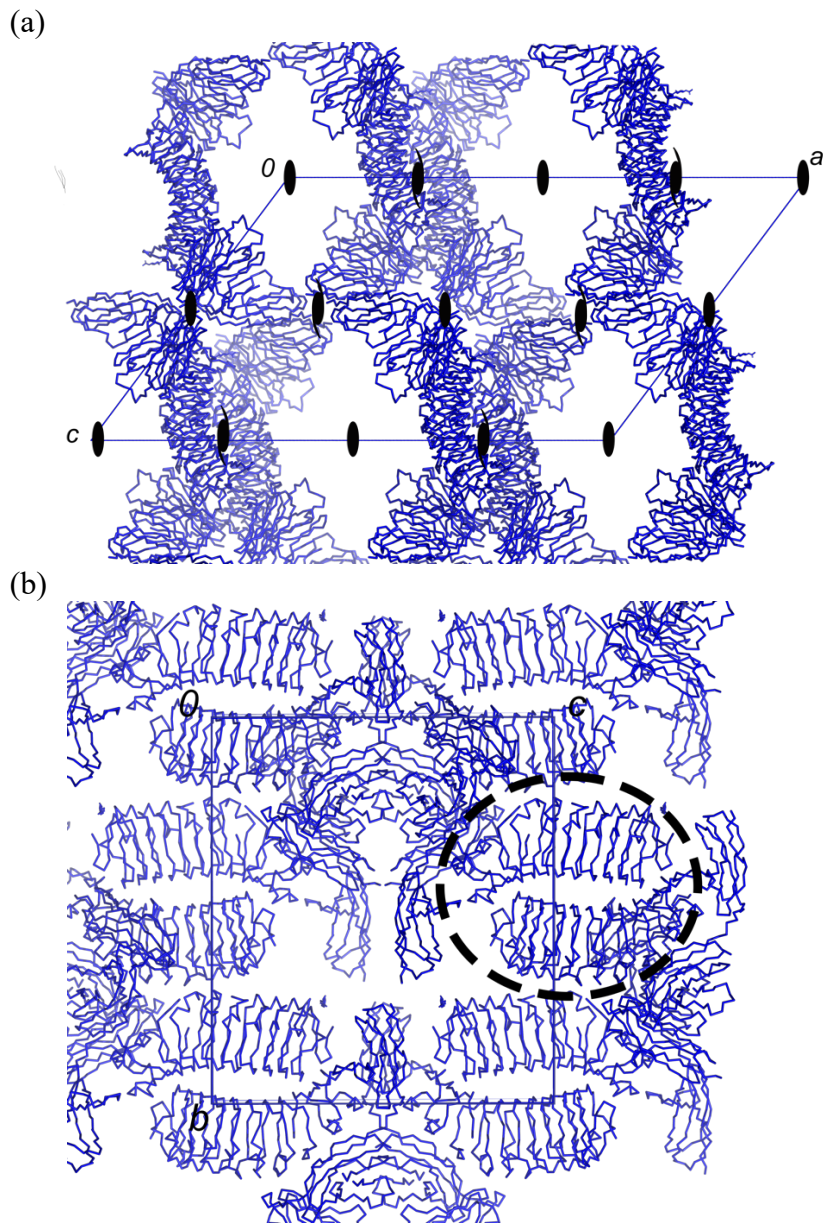


Figure S1. Crystal packing of SALM3:PTP σ complex. a) View along the unique b-axis with crystallographic two-fold symmetry operators shown. b) View along a-axis showing the non-crystallographic two-fold (LRR dimer circled) as in the self rotation plot (at 10° angle to the unit cell *a*-axis), the crystallographic two-fold is visible along the b-axis.