



STRUCTURAL BIOLOGY
COMMUNICATIONS

Volume 76 (2020)

Supporting information for article:

**Characterization and structure of glyceraldehyde-3-phosphate
dehydrogenase 1 from *Escherichia coli***

**L. Zhang, M. R. Liu, Y. C. Yao, I. K. Bostrom, Y. D. Wang, A. Q. Chen, J. X. Li, S. H.
Gu and C. N. Ji**

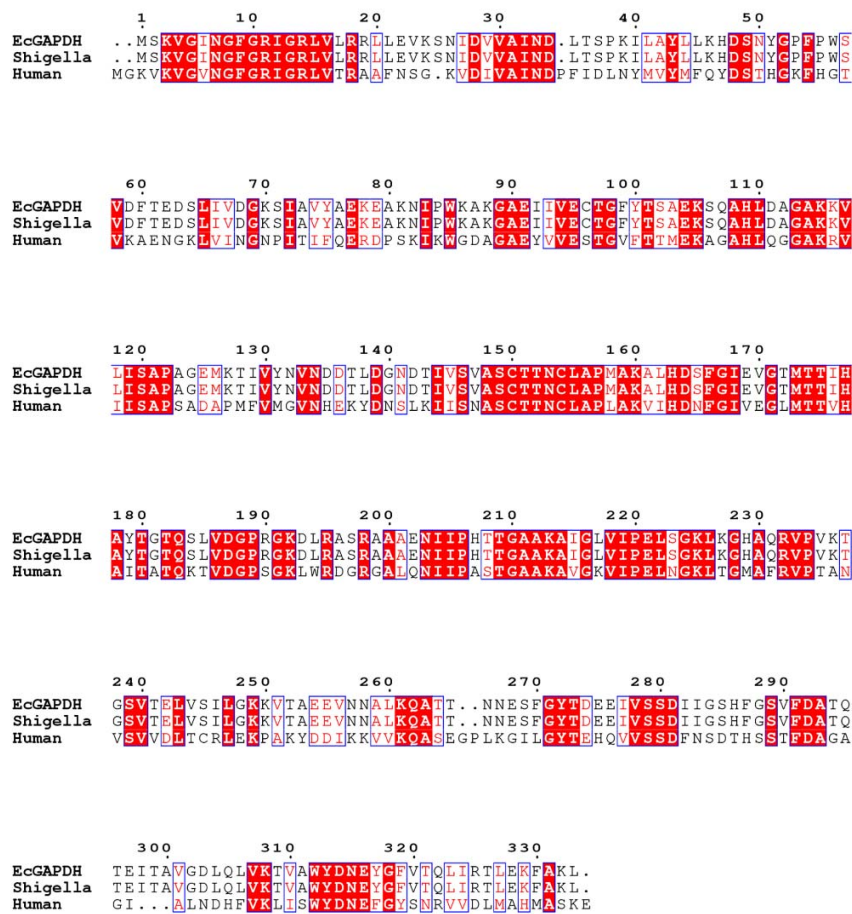


Figure S1 Alignment between EcGAPDH I and GAPDH from *Shigella sonnei* and human placenta. EcGAPDH; sequence of type I GAPDH from *Escherichia coli*. Shigella; sequence of GAPDH from *Shigella sonnei*. Human; sequence of GAPDH from *Human Placenta*

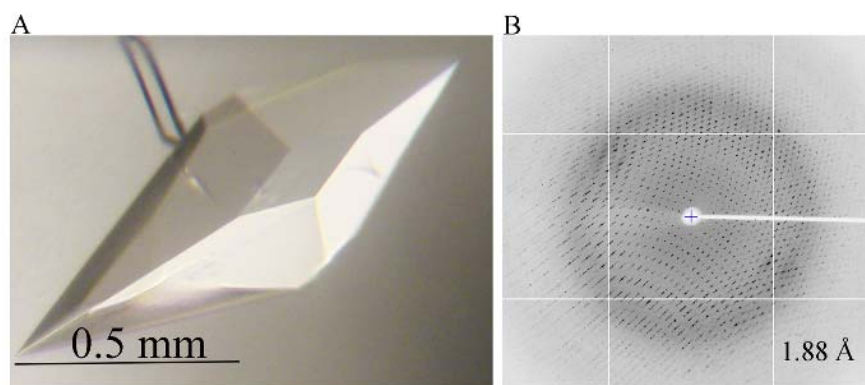


Figure S2 Crystallization of *EcGAPDH I*. A. Crystal of *EcGAPDH I*. B. Diffraction pattern from the *EcGAPDH I* crystal, as obtained from the beam-line BL17U.

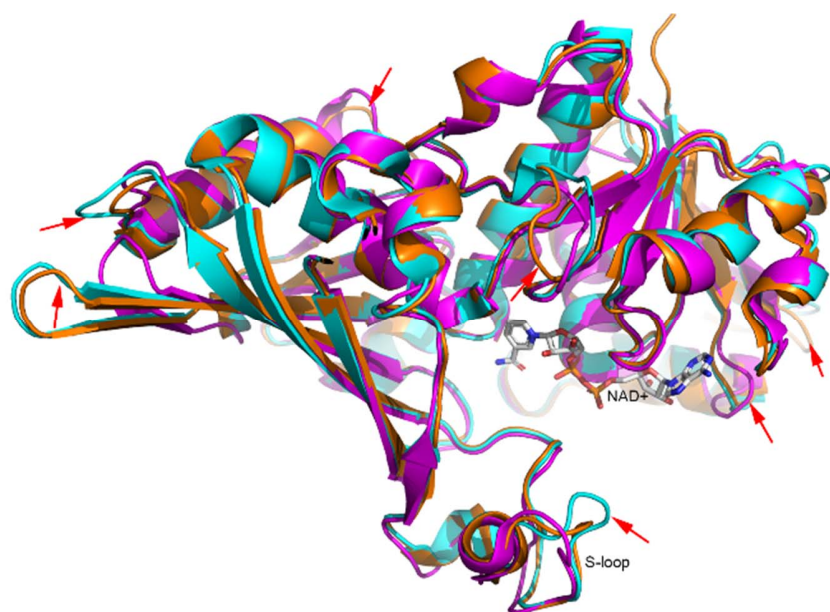


Figure S3 Align O subunit of *EcGAPDH I* to *HuGAPDH* and *MrsaGAPDH*. The subunit is shown as a cartoon. *EcGAPDH I* is present in orange. *HuGAPDH* is shown in magenta and *MrsaGAPDH* in cyan.