



STRUCTURAL BIOLOGY  
COMMUNICATIONS

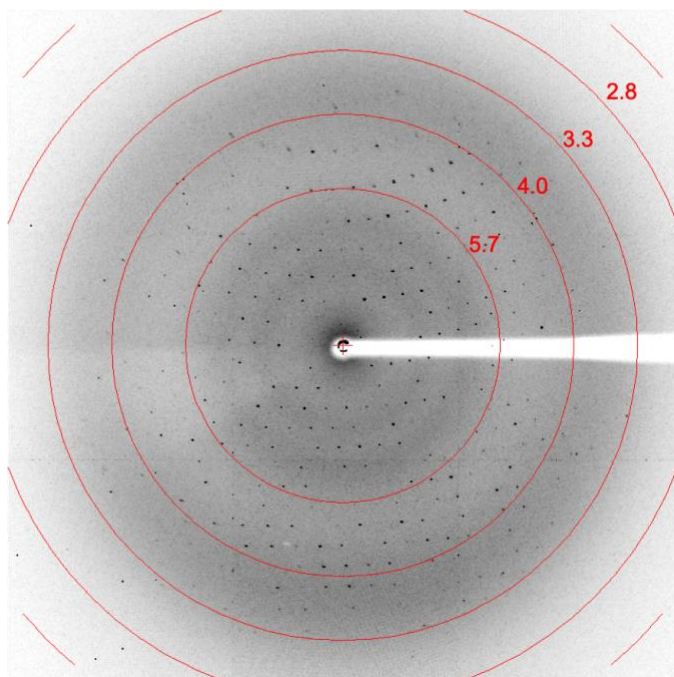
**Volume 76 (2020)**

**Supporting information for article:**

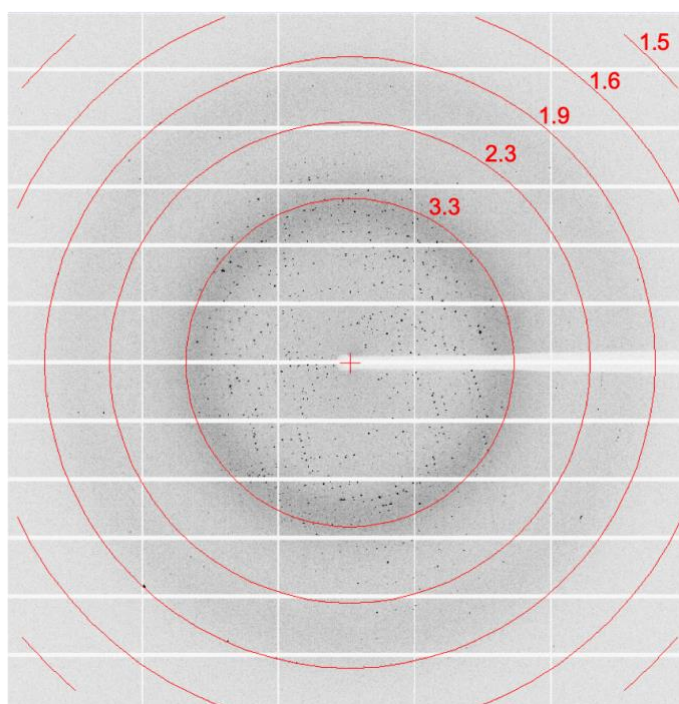
**The adhesive PitA pilus protein from the early dental plaque colonizer *Streptococcus oralis*: expression, purification, crystallization and X-ray diffraction analysis**

**Rajnesh Kumari Yadav and Vengadesan Krishnan**

**a**



**b**



**Supplementary Fig. S1: a.** X-ray diffraction pattern collected from a single PitA<sub>FL</sub> crystal. **b.** X-ray diffraction pattern collected from a single PitA<sub>Chy</sub> crystal. Resolution arcs (red circles) in Å are marked.

PDB ID	Percentage of identity	Alignment length	Query start-end / Subject start-end	E-value	Bit score	Protein
2WW8_A	23.985	271	6-266 / 185-423	4.83E-18	90.1	RrgA [ <i>S. pneumoniae</i> ]
3TXA_A	24.715	263	10-256 / 139-367	2.25E-16	84.3	GBS104 [ <i>S. agalactiae</i> ]
1PT6_A	16.098	205	35-239 / 1-140	2.42E-12	67.8	Integrin $\alpha$ -1 [ <i>Homo sapiens</i> ]

**Supplementary Fig. S2:** DELTA-BLAST search results for structural homologs of PitA.