



STRUCTURAL BIOLOGY
COMMUNICATIONS

Volume 72 (2016)

Supporting information for article:

**Cloning, expression, purification and crystallization of
Schizosaccharomyces pombe Set7, a putative histone
methyltransferase**

Damiaan E. H. F. Mevius, Yunpeng Shen, Masayo Morishita and Eric di Luccio

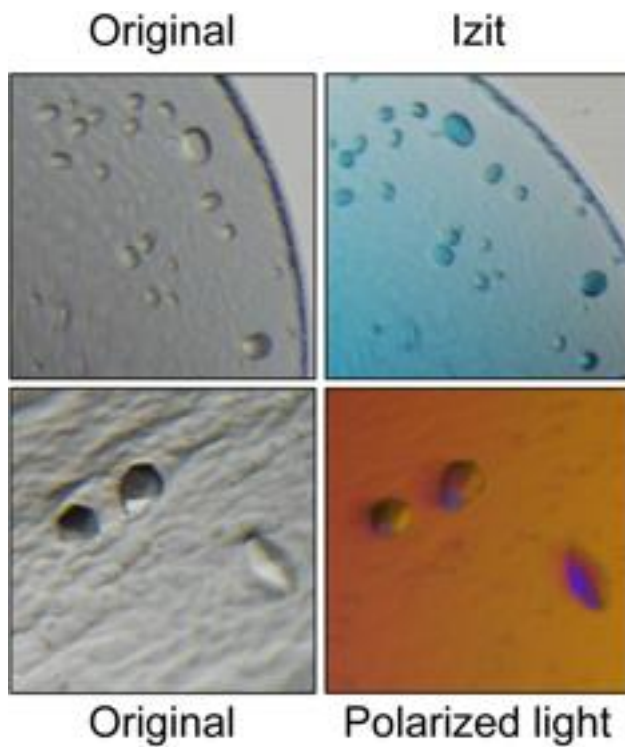


Figure S1 Differentiation of protein crystals from salt crystals. Top: Crystals were stained with Izit dye resulting in dark blue protein crystals. Bottom: Polarized light was used to investigate birefringence of the crystals. Crystals showed bright colors and clear shadows along the edges. These results are strong indicators of the authenticity of the authenticity of the protein crystals.

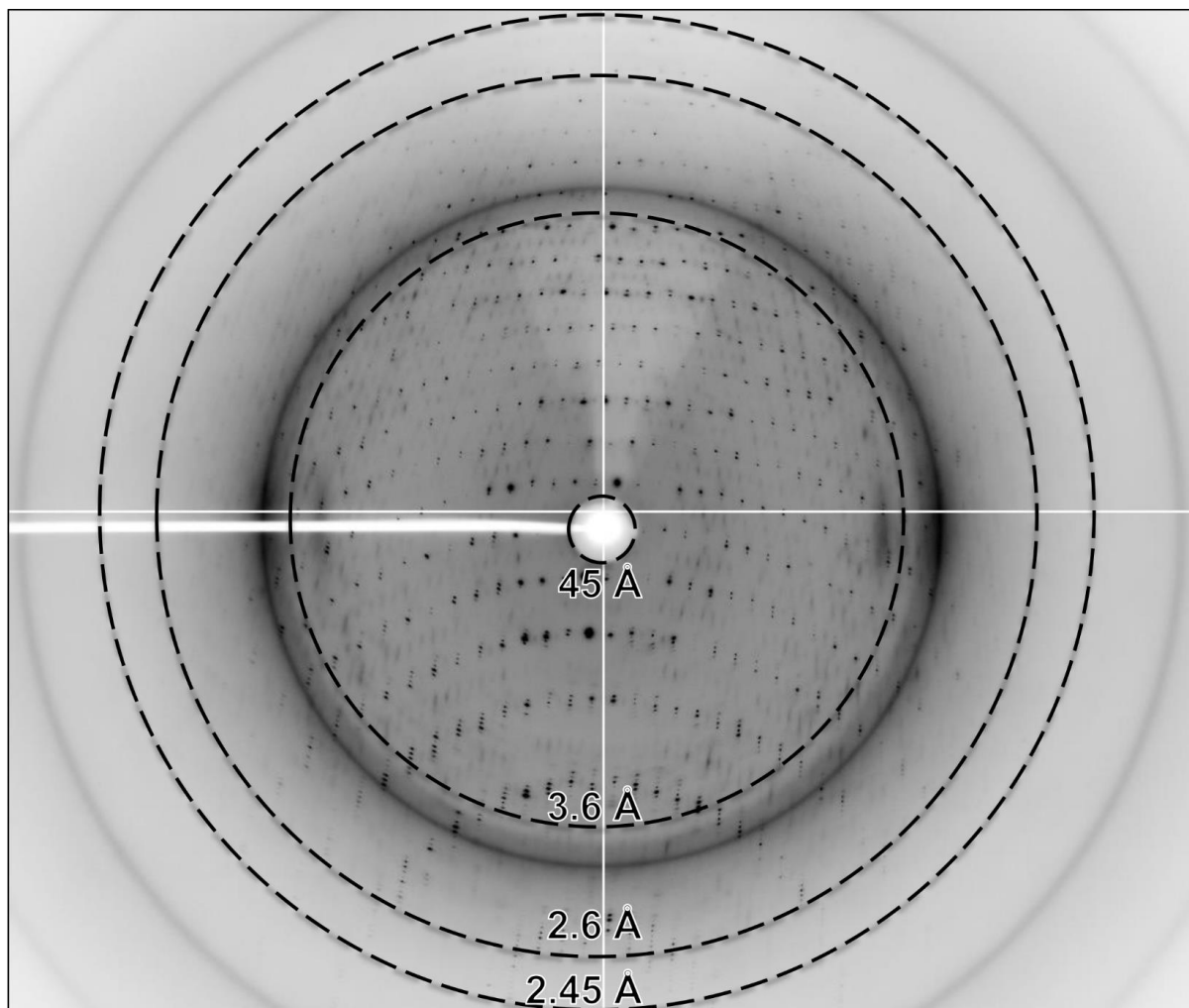


Figure S2 Diffraction pattern of a Set7 crystal. Reflections up to 2.4 Å were observed and data were reduced to a 2.45 Å dataset using HKL2000