



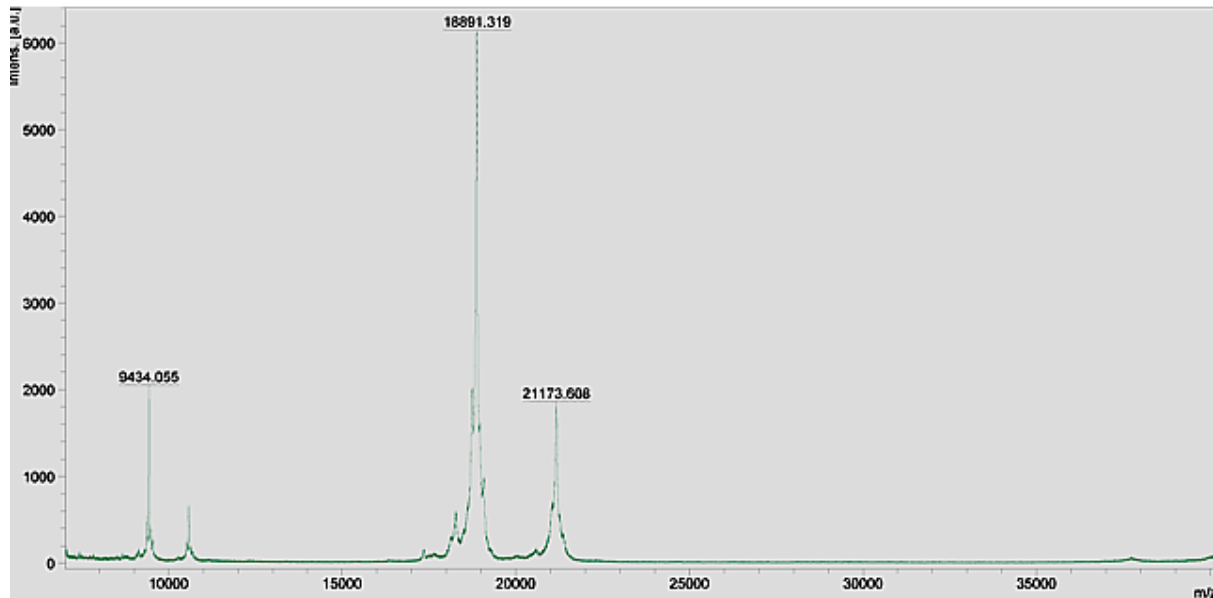
STRUCTURAL BIOLOGY  
COMMUNICATIONS

**Volume 71 (2015)**

**Supporting information for article:**

***Phormidium* phycoerythrin forms hexamers in crystals: a preliminary crystallographic study**

**Ravi Raghav Sonani, Mahima Sharma, Gagan Deep Gupta, Vinay Kumar and Datta Madamwar**



**Figure S1** Matrix-assisted laser-desorption ionization time-of-flight mass spectrometry (MALDI-TOF-MS) spectrum of purified *Phormidium* PE. Peaks at 18891.3 and 21173.6 Da correspond to masses of  $\alpha$ - and  $\beta$ - subunits, respectively. Smaller peaks at 9434.1 and at about 10580 Da ( $m/z$  not marked) correspond to doubly charged species of these subunits.

**Table S1** List of designed primers for amplification of *cpeA* and *cpeB* genes

Gene	Primer	Sequence (5' – 3')
<i>cpeA</i>	Forward primer	ATGAAATCCGTCGTCACCAC
	Reverse primer	TCAAGACAGAGAGTTGATGGC
<i>cpeB</i>	Forward primer	CTTGACGCATTCTCTAGAGCCG
	Reverse primer	CTGTGGTGACGACGGATTTCAT