



STRUCTURAL BIOLOGY
COMMUNICATIONS

Volume 70 (2014)

Supporting information for article:

**Cloning, expression, purification, crystallization and X-ray
crystallographic analysis of PhaA from *Ralstonia eutropha***

Eun-Jung Kim and Kyung-Jin Kim

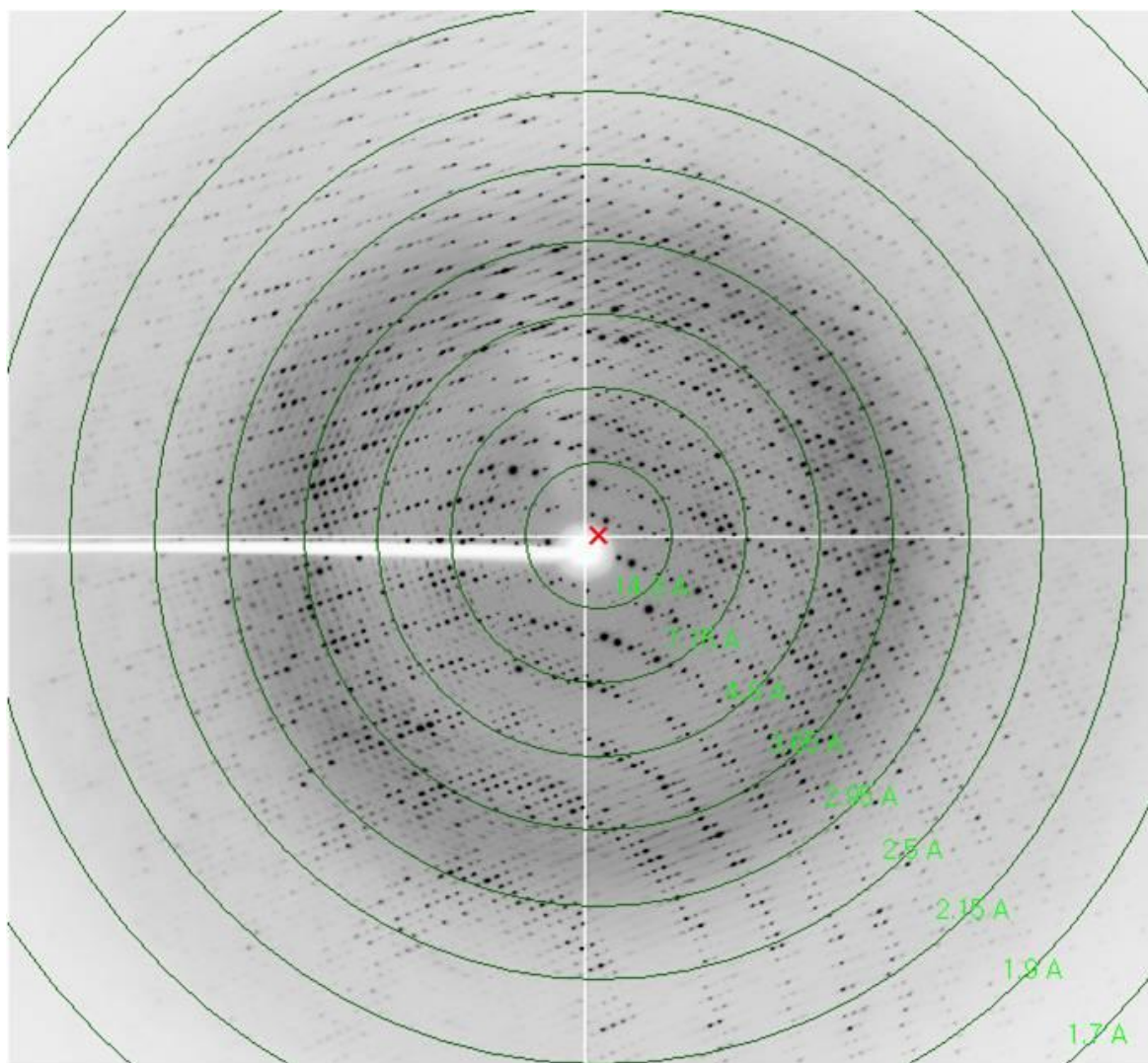


Figure S1 Diffraction pattern of the RePhaA crystal. The crystal diffracted to maximum resolution of 1.96 Å.

Chi = 180.0

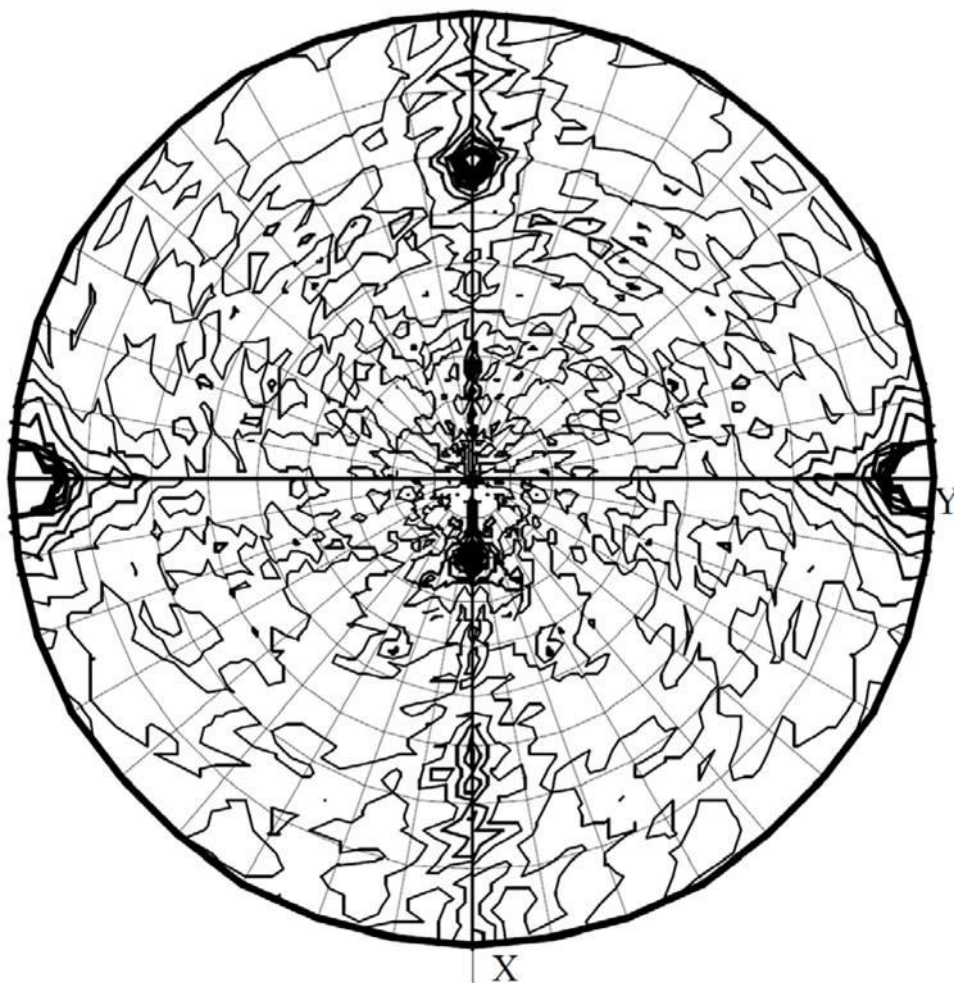


Figure S2 Stereographic projection of the $\chi = 180^\circ$ section of the self-rotation function calculated using data in the resolution range 40.0-4.0 Å with an integration radius of 48.18 Å.