

Supporting Information

**Crystallization and preliminary X-ray diffraction analysis of
cyclolavandulyl diphosphate synthase, a new member of the
cis-isoprenyl diphosphate synthase superfamily**

Takeo Tomita^a, Taro Ozaki^{a1}, Kenichi Matsuda^a, Makoto Nishiyama^a and Tomohisa Kuzuyama^{a*}

^aBiotechnology Research Center, The University of Tokyo, 1-1-1 Yayoi, Bunkyo-ku, Tokyo, 1138657,
Japan

*Correspondence email: utkuz@mail.ecc.u-tokyo.ac.jp

¹Present address: Graduate School of Agriculture and Life Sciences, The University of Tokyo, 1-1-1
Yayoi, Bunkyo-ku, Tokyo 113-8657, Japan

Table of contents

Figure S1. SDS-PAGE analysis and diffraction patter of CLDS-NH.	S2
Figure S2. SDS-PAGE analysis and diffraction patter of CLDS-CH.	S3

CLDS-NH

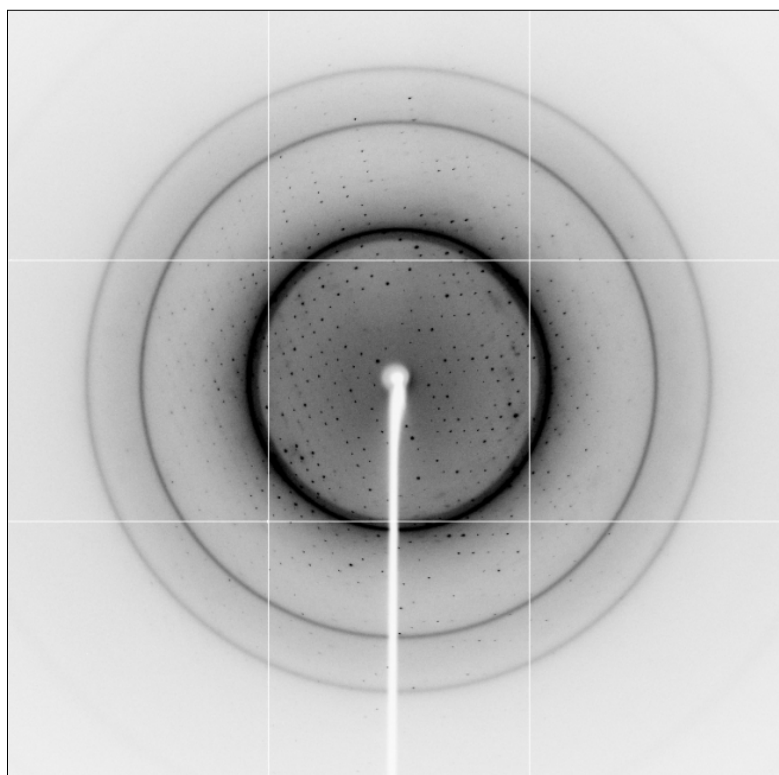
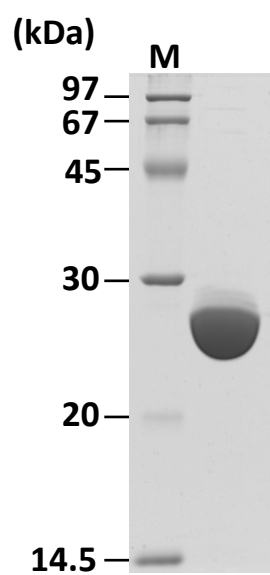
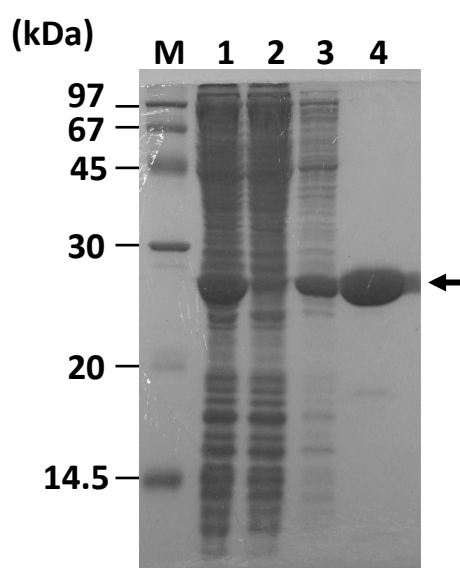


Figure S1.
SDS-PAGE analysis and diffraction patter of CLDS-NH.

CLDS-CH



1. Supernatant
2. Flow through
3. Wash
4. Elution

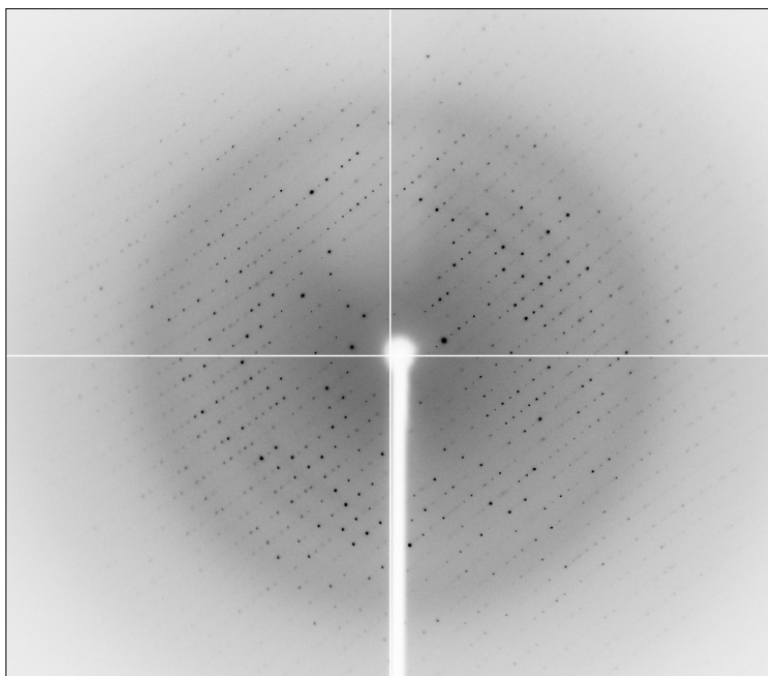


Figure S2.
SDS-PAGE analysis and diffraction patten of CLDS-CH.