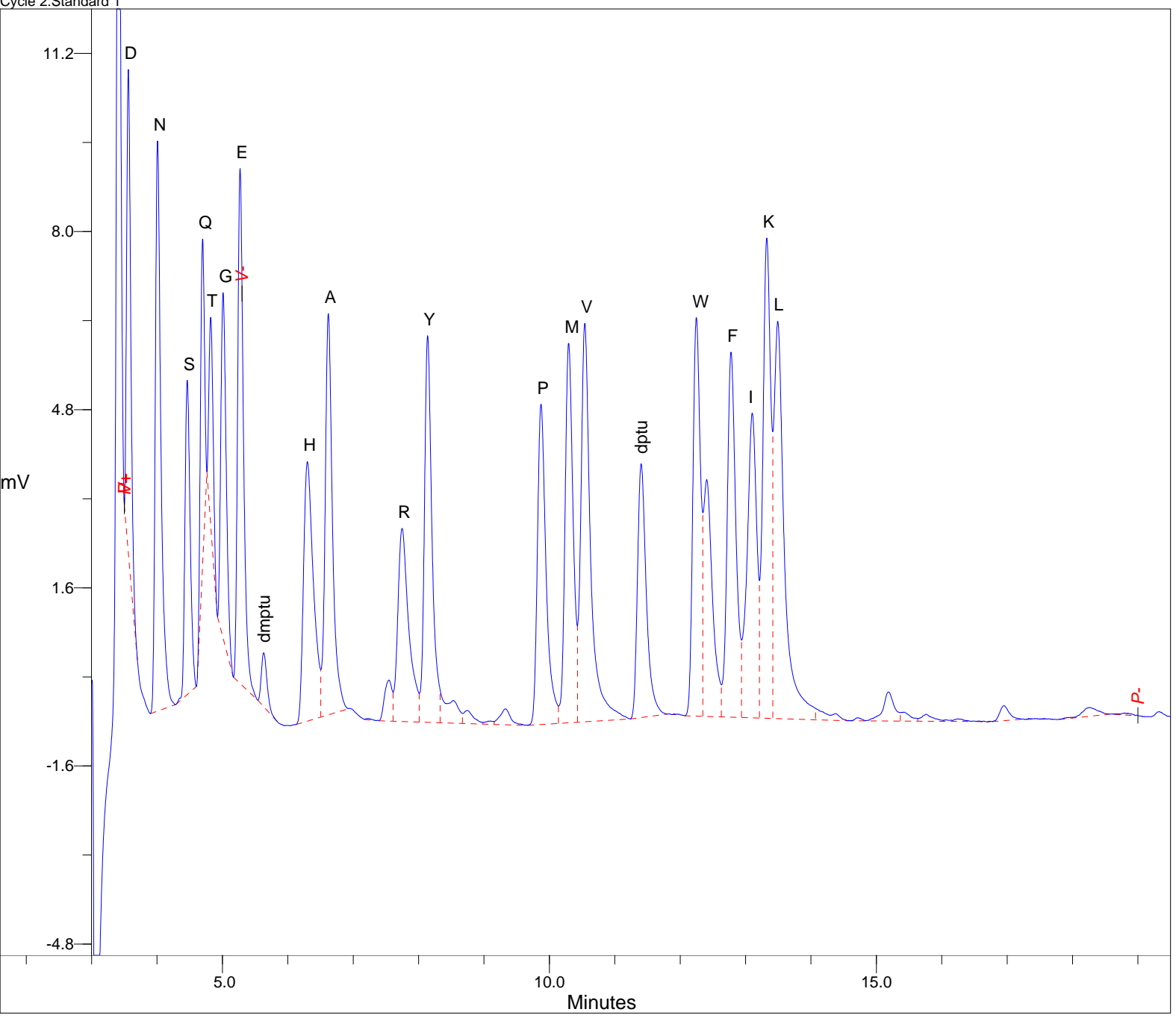
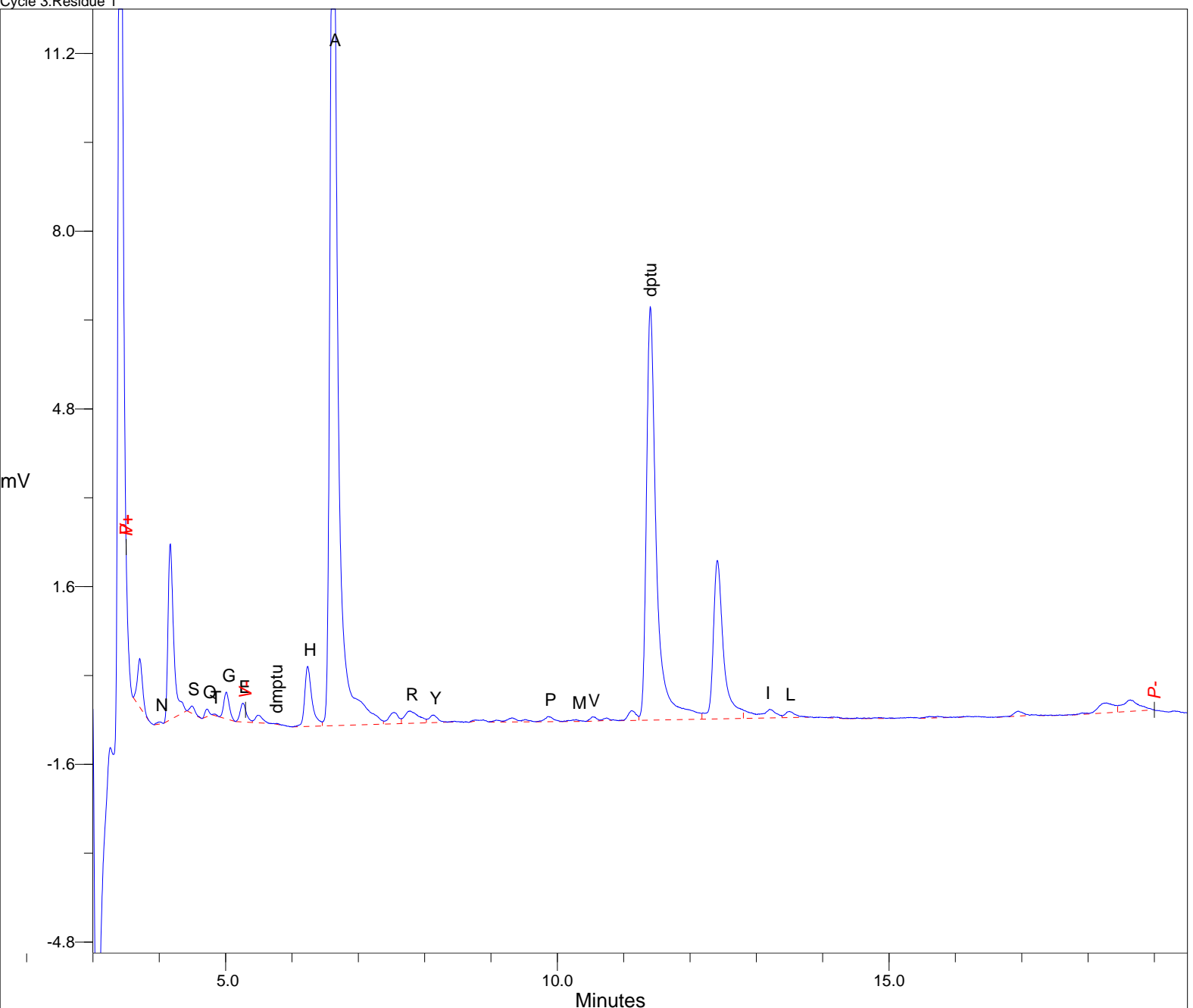


Cycle 2:Standard 1



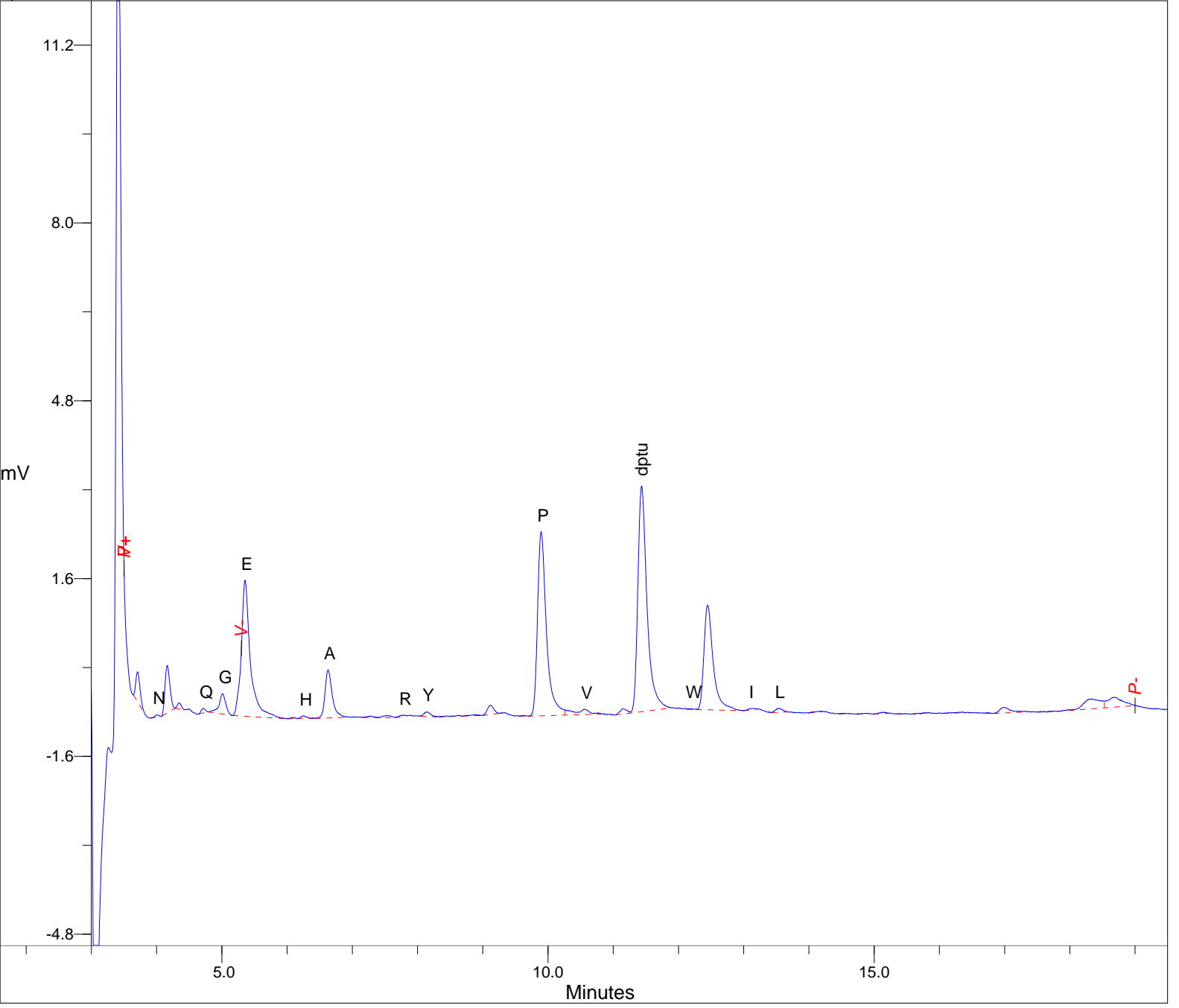
PEAK ID	R.TIME (mins)	C.TIME (mins)	HEIGHT (mV)	PMOL HT	PEAK ID	R.TIME (mins)	C.TIME (mins)	HEIGHT (mV)	PMOL HT
D	3.56	3.56	8.691	100.000	W	12.25	12.25	7.162	100.000
N	4.01	4.01	10.240	100.000		12.40	12.40	4.256	100.000
S	4.46	4.46	5.647	100.000	F	12.78	12.78	6.562	100.000
Q	4.70	4.70	5.843	100.000	I	13.10	13.10	5.479	100.000
T	4.82	4.82	3.724	100.000	K	13.32	13.32	8.632	100.000
G	5.01	5.01	6.214	100.000	L	13.49	13.49	7.139	100.000
E	5.27	5.27	9.253	100.000		14.38		0.100	
dmptu	5.63	5.63	0.971	100.000		14.72		0.054	
H	6.30	6.30	4.665	100.000		15.19		0.522	
A	6.62	6.62	7.213	100.000		15.43		0.161	
	7.23		0.023			15.76		0.126	
	7.54		0.737			16.06		0.027	
R	7.75	7.75	3.472	100.000		16.25		0.045	
Y	8.14	8.14	6.947	100.000		16.57		0.012	
	8.53		0.368			16.63		0.013	
	8.74		0.236			16.73		0.010	
	9.10		0.061			16.94		0.269	
	9.32		0.288			17.33		0.016	
P	9.87	9.87	5.756	100.000		17.57		0.014	
M	10.30	10.30	6.820	100.000		17.97		0.019	
V	10.54	10.54	7.160	100.000		18.27		0.158	
dmptu	11.40	11.40	4.562	100.000		18.70		0.016	
	11.91		0.013			18.80		0.037	

Cycle 3:Residue 1



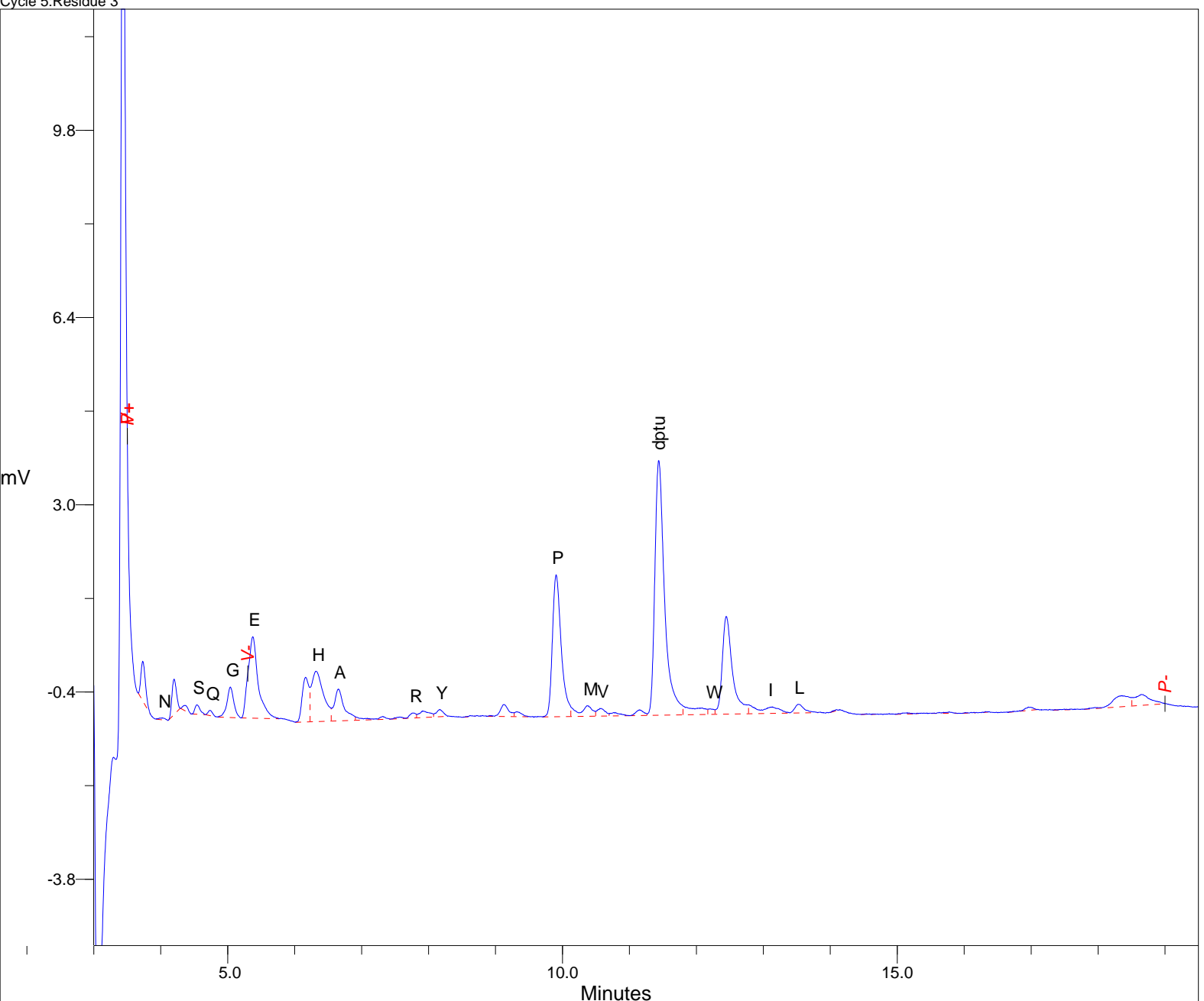
PEAK ID	R.TIME (mins)	C.TIME (mins)	HEIGHT (mV)	PMOL HT	PEAK ID	R.TIME (mins)	C.TIME (mins)	HEIGHT (mV)	PMOL HT
N	3.70		0.874						
	4.00	4.01	0.038	0.369	dptu	11.12		0.177	
	4.17		3.165			11.40	11.40	7.447	163.219
S	4.49	4.46	0.133	2.350		12.41	12.40	2.855	67.086
Q	4.72	4.70	0.135	2.310	I	13.20	13.10	0.151	2.755
T	4.83	4.82	0.025	0.683	L	13.50	13.49	0.111	1.551
G	5.01	5.01	0.483	7.773		14.17		0.021	
E	5.26	5.27	0.339	3.660		14.37		0.011	
	5.48		0.136			14.52		0.014	
dmptu	5.76	5.63	0.014	1.489		14.62		0.013	
H	6.24	6.30	1.082	23.193		14.70		0.012	
A	6.62	6.62	16.878	233.998		14.84		0.019	
	7.54		0.207			15.05		0.012	
R	7.78	7.75	0.223	6.418		15.60		0.030	
Y	8.14	8.14	0.136	1.956		15.74		0.028	
	8.45		0.013			15.92		0.009	
	8.77		0.017			16.13		0.011	
	9.08		0.034			16.95		0.089	
	9.31		0.074			17.29		0.010	
	9.51		0.044			17.43		0.009	
P	9.87	9.87	0.093	1.619		17.52		0.007	
M	10.28	10.30	0.035	0.508		17.71		0.008	
V	10.53	10.54	0.076	1.063		17.92		0.028	
	10.74		0.046			18.27		0.178	
						18.64		0.206	

Cycle 4:Residue 2



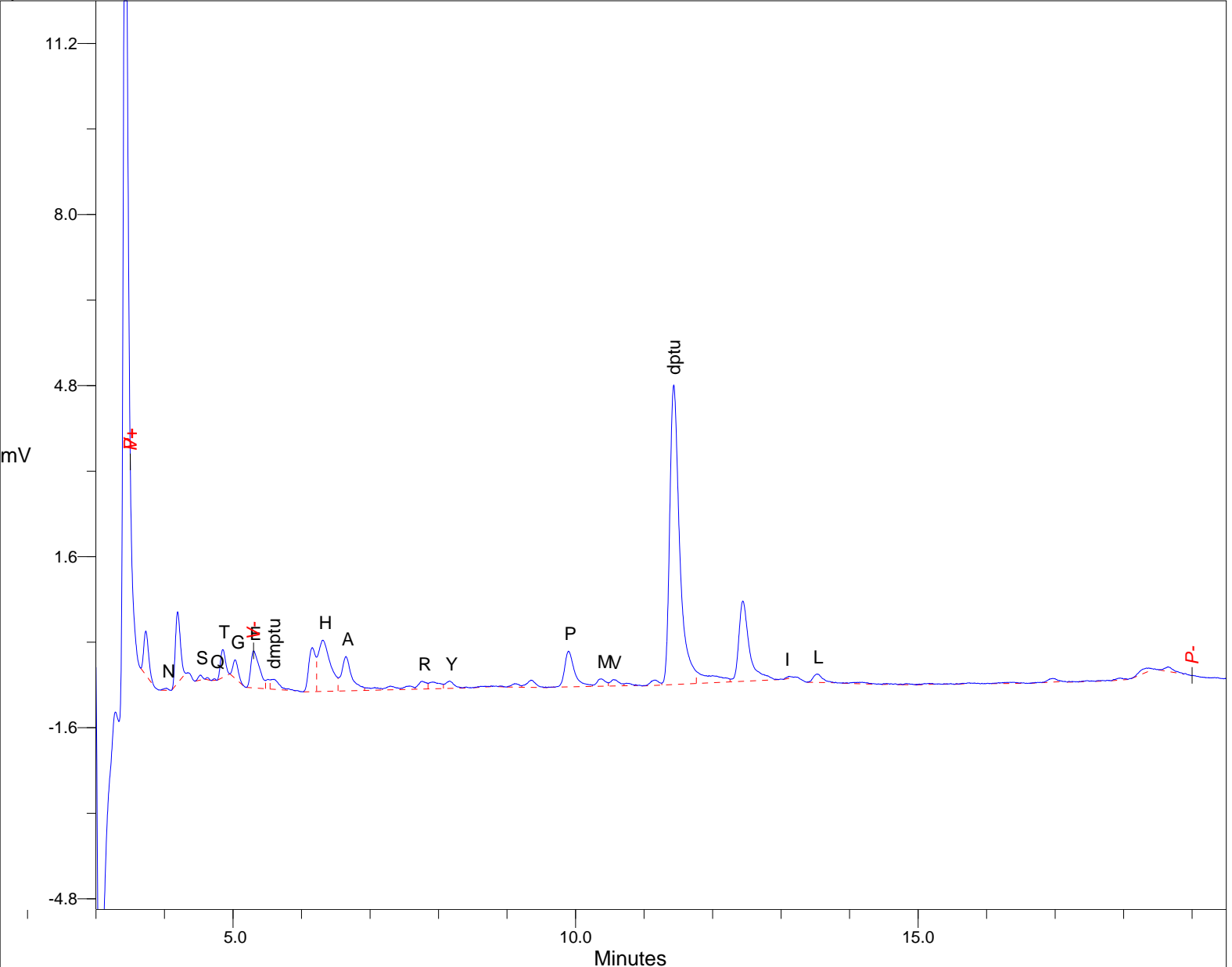
PEAK ID	R.TIME (mins)	C.TIME (mins)	HEIGHT (mV)	PMOL HT	PEAK ID	R.TIME (mins)	C.TIME (mins)	HEIGHT (mV)	PMOL HT
N	3.71		0.534		dptu	11.43	11.40	4.061	89.004
	4.00	4.01	0.040	0.388	W	12.17	12.25	0.015	0.204
	4.16		0.855			12.45	12.40	1.883	44.249
	4.34		0.111		I	13.14	13.10	0.023	0.428
Q	4.72	4.70	0.083	1.417	L	13.54	13.49	0.075	1.044
G	5.01	5.01	0.366	5.890		14.15		0.015	
E	5.35	5.27	2.446	26.429		14.53		0.012	
	6.10		0.026			14.85		0.009	
H	6.25	6.30	0.052	1.123		15.14		0.027	
A	6.63	6.62	0.867	12.015		15.38		0.008	
	7.28		0.028			15.68		0.011	
	7.53		0.039			15.79		0.011	
R	7.78	7.75	0.023	0.667		16.15		0.015	
Y	8.14	8.14	0.083	1.195		16.35		0.015	
	8.45		0.011			16.74		0.012	
	8.63		0.015			16.99		0.102	
	8.90		0.020			17.22		0.023	
	9.12		0.164			17.28		0.017	
	9.64		0.013			17.60		0.011	
P	9.90	9.87	3.313	57.547		17.70		0.010	
V	10.57	10.54	0.091	1.277		18.34		0.178	
	10.76		0.023			18.67		0.179	
	11.15		0.095						

Cycle 5:Residue 3



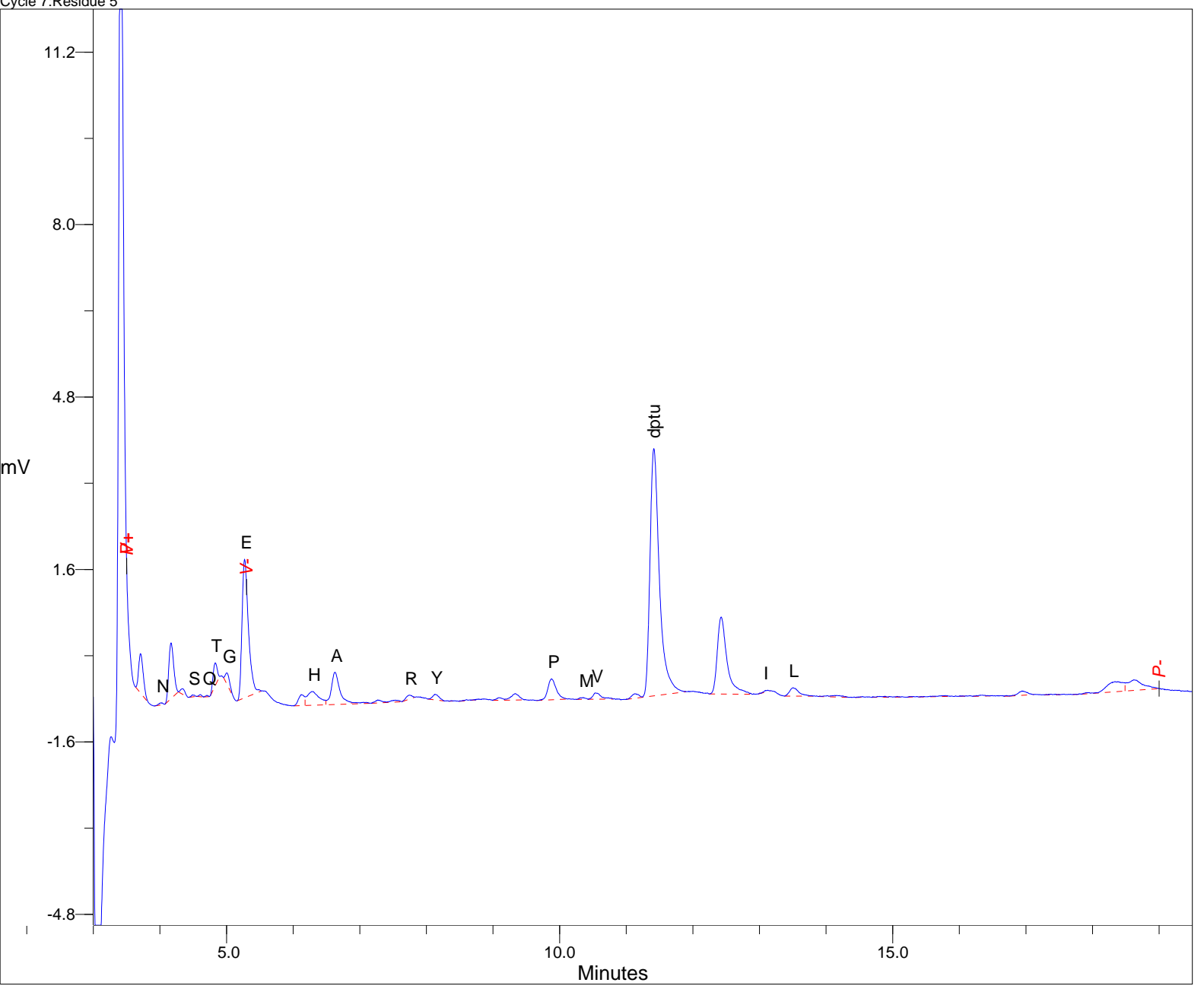
PEAK ID	R.TIME (mins)	C.TIME (mins)	HEIGHT (mV)	PMOL HT	PEAK ID	R.TIME (mins)	C.TIME (mins)	HEIGHT (mV)	PMOL HT	
N	3.73		0.722		dptu	11.15		0.103		
	4.03	4.01	0.036	0.352		11.44	11.40	4.625	101.371	
	4.20		0.642			12.08		0.111		
	4.35		0.091			W	12.20	12.25	0.100	1.397
	4.54	4.46	0.171	3.031			12.44	12.40	1.775	41.706
	4.74	4.70	0.094	1.615		I	13.13	13.10	0.105	1.922
	5.04	5.01	0.553	8.897		L	13.53	13.49	0.155	2.178
	5.38	5.27	1.479	15.984			14.09		0.019	
	6.16		0.812				14.54		0.010	
	6.32	6.30	0.913	19.577			14.64		0.008	
A	6.65	6.62	0.577	8.007		15.15		0.022		
	7.08		0.022			15.30		0.009		
	7.31		0.054			15.63		0.018		
	7.56		0.029			15.78		0.027		
R	7.78	7.75	0.090	2.598		16.01		0.013		
	7.92		0.118			16.15		0.010		
Y	8.17	8.14	0.130	1.879		16.32		0.012		
	8.62		0.018			16.96		0.062		
	8.91		0.016			17.36		0.008		
	9.12		0.218			17.50		0.014		
	9.32		0.090			17.61		0.010		
P	9.90	9.87	2.575	44.739		17.97		0.018		
M	10.38	10.30	0.185	2.706		18.35		0.200		
V	10.57	10.54	0.139	1.936		18.65		0.198		
	10.76		0.062							

Cycle 6:Residue 4



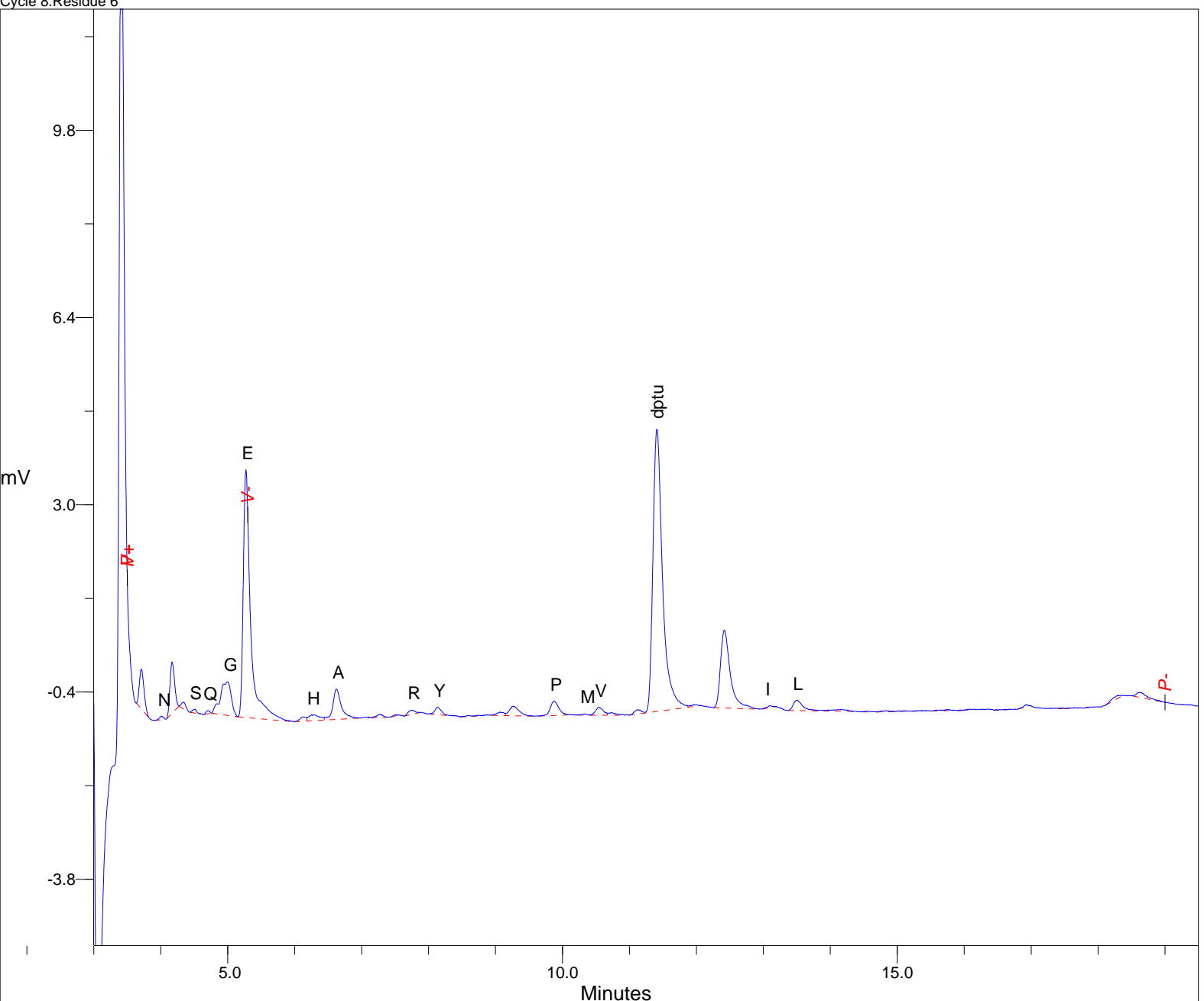
PEAK ID	R.TIME (mins)	C.TIME (mins)	HEIGHT (mV)	PMOL HT	PEAK ID	R.TIME (mins)	C.TIME (mins)	HEIGHT (mV)	PMOL HT
N	3.73		0.824		M	10.38	10.30	0.139	2.045
	4.03	4.01	0.041	0.402	V	10.56	10.54	0.121	1.686
	4.19		1.330			10.75		0.047	
S	4.52	4.46	0.094	1.664		11.17		0.100	
	4.62		0.037		dptu	11.43	11.40	5.603	122.799
Q	4.73	4.70	0.031	0.538		12.00		0.112	
T	4.85	4.82	0.522	14.023		12.44	12.40	1.502	35.288
G	5.03	5.01	0.350	5.628	I	13.11	13.10	0.037	0.670
E	5.30	5.27	0.694	7.505	L	13.53	13.49	0.158	2.209
	5.50		0.178			13.90		0.011	
dmptu	5.60	5.63	0.188	19.368		14.18		0.031	
	6.16		0.824			14.54		0.016	
H	6.31	6.30	0.958	20.543		14.75		0.012	
A	6.65	6.62	0.643	8.917		14.82		0.022	
	7.07		0.043			15.02		0.013	
	7.29		0.069			15.20		0.018	
	7.57		0.063			15.38		0.010	
R	7.76	7.75	0.145	4.189		15.57		0.012	
	7.92		0.127			15.75		0.011	
Y	8.16	8.14	0.137	1.974		16.17		0.018	
	8.40		0.019			16.40		0.024	
	8.69		0.013			16.97		0.070	
	8.78		0.011			17.20		0.013	
	8.92		0.015			17.46		0.017	
	9.11		0.064			17.70		0.013	
	9.35		0.135			17.95		0.038	
	9.61		0.008			18.37		0.060	
P	9.90	9.87	0.668	11.603		18.65		0.085	

Cycle 7:Residue 5



PEAK ID	R.TIME (mins)	C.TIME (mins)	HEIGHT (mV)	PMOL HT	PEAK ID	R.TIME (mins)	C.TIME (mins)	HEIGHT (mV)	PMOL HT
N	3.71		0.731		dptu	11.13		0.085	
	4.01	4.01	0.039	0.380		11.41	11.40	4.588	100.558
	4.17		1.032			12.43	12.40	1.429	33.571
	4.34		0.104		I	13.13	13.10	0.025	0.457
S	4.49	4.46	0.036	0.630	L	13.50	13.49	0.155	2.168
	4.60		0.041			14.02		0.022	
Q	4.70	4.70	0.028	0.473		14.16		0.031	
T	4.83	4.82	0.418	11.231		14.55		0.013	
G	5.00	5.01	0.208	3.342		14.70		0.012	
E	5.27	5.27	2.567	27.745		14.80		0.018	
	6.13		0.205			14.88		0.018	
H	6.28	6.30	0.255	5.467		14.95		0.014	
A	6.63	6.62	0.599	8.309		15.07		0.015	
	7.05		0.021			15.28		0.010	
	7.27		0.056			15.48		0.008	
	7.53		0.036			15.79		0.017	
R	7.74	7.75	0.076	2.183		16.01		0.009	
Y	8.13	8.14	0.104	1.495		16.34		0.019	
	8.38		0.009			16.71		0.011	
	8.60		0.020			16.94		0.080	
	8.79		0.011			17.38		0.013	
	9.09		0.047			17.45		0.011	
	9.33		0.119			17.80		0.008	
P	9.88	9.87	0.390	6.780		17.92		0.021	
M	10.35	10.30	0.032	0.475		18.34		0.188	
V	10.54	10.54	0.118	1.644		18.62		0.196	

Cycle 8:Residue 6



PEAK ID	R.TIME (mins)	C.TIME (mins)	HEIGHT (mV)	PMOL HT	PEAK ID	R.TIME (mins)	C.TIME (mins)	HEIGHT (mV)	PMOL HT	
N	3.71		0.719		dptu	11.41	11.40	5.126	112.358	
	4.02	4.01	0.063	0.612		11.97		0.027		
	4.17		0.931			12.42	12.40	1.418	33.316	
	4.35		0.124			I	13.09	13.10	0.037	0.679
	4.50	4.46	0.063	1.119		L	13.50	13.49	0.188	2.635
	4.70	4.70	0.060	1.020			14.17		0.037	
	4.70		0.060				14.56		0.014	
	5.00	5.01	0.612	9.857			14.78		0.018	
	5.27	5.27	4.500	48.630			14.84		0.022	
	6.12		0.080				15.09		0.011	
	6.25	6.30	0.108	2.312			15.35		0.008	
6.63	6.62	0.548	7.605		15.63		0.017			
7.27		0.060			15.77		0.020			
7.50		0.023			15.94		0.012			
7.75	7.75	0.077	2.222		16.08		0.010			
8.14	8.14	0.136	1.962		16.48		0.011			
8.59		0.020			16.67		0.008			
8.73		0.015			16.95		0.025			
9.06		0.063			17.48		0.012			
9.25		0.173			17.62		0.009			
P	9.88	9.87	0.258	4.491		17.67		0.011		
M	10.33	10.30	0.024	0.348		17.88		0.009		
V	10.55	10.54	0.145	2.024		18.34		0.027		
	10.73		0.048			18.64		0.093		
	10.90		0.014							
	11.13		0.079							