



STRUCTURAL
CHEMISTRY

Volume 80 (2024)

Supporting information for article:

Syntheses, crystal structures and intermolecular interactions of six novel pyrimidin-2-yl-substituted triaryltriazoles

Huijie Song, Ri Peng, Yi Zuo, Tao Wang and Dunru Zhu

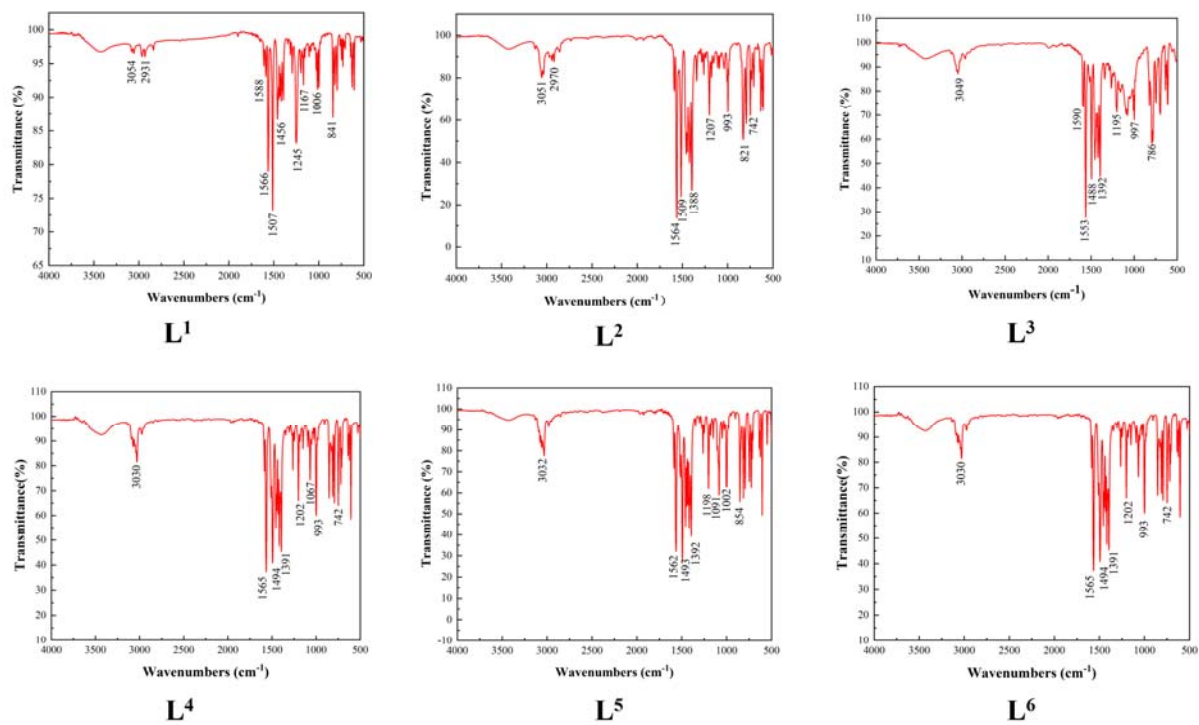


Figure S1 FT-IR spectra of the compounds L¹⁻⁶.

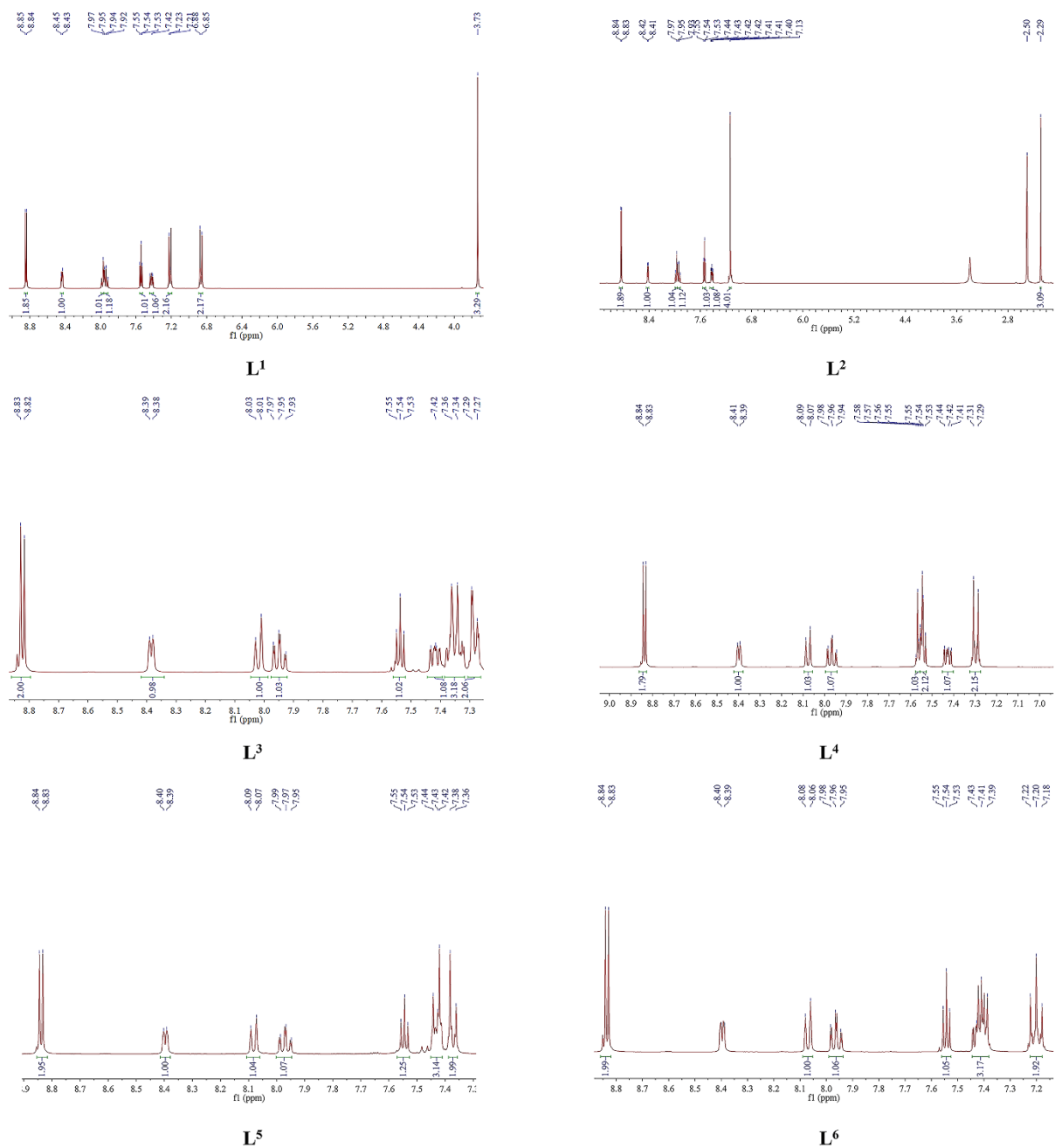


Figure S2 ^1H NMR spectra of the compounds L^1 - L^6 .

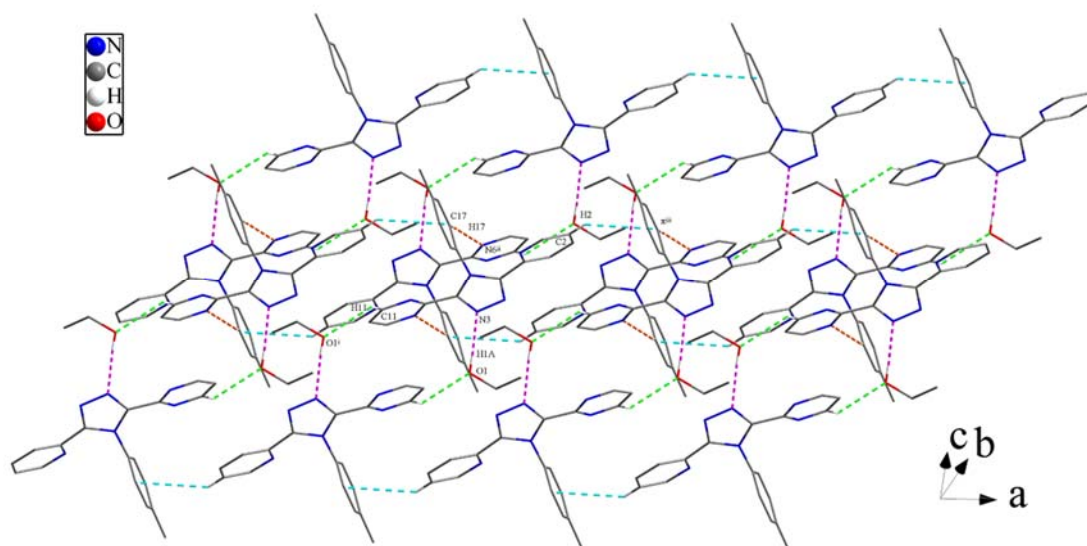


Figure S3 View of the 3D hydrogen bonding framework of $L^2 \cdot C_2H_5OH$.

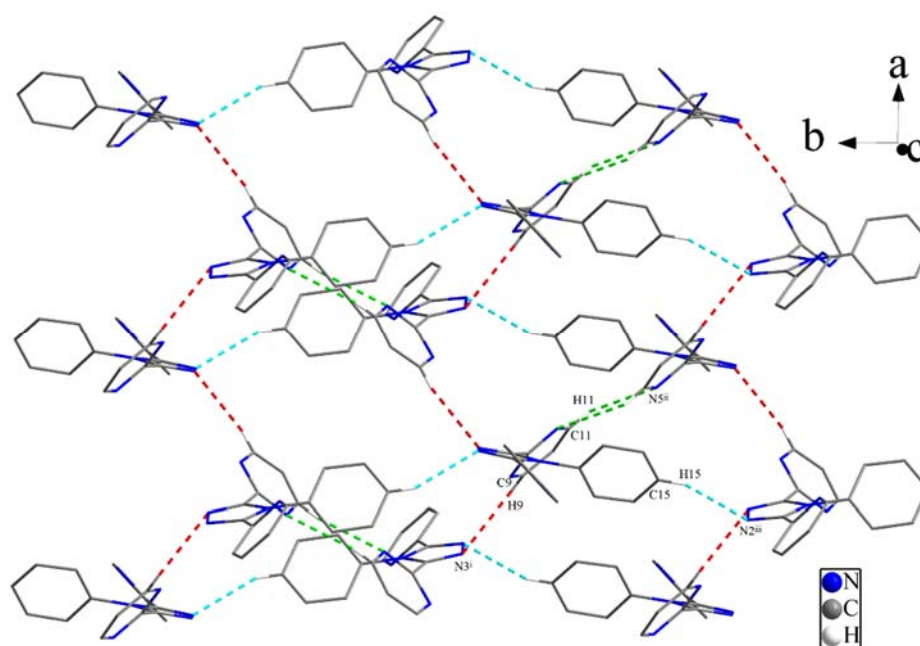


Figure S4 View of the 3D hydrogen bonding framework of L^3 .

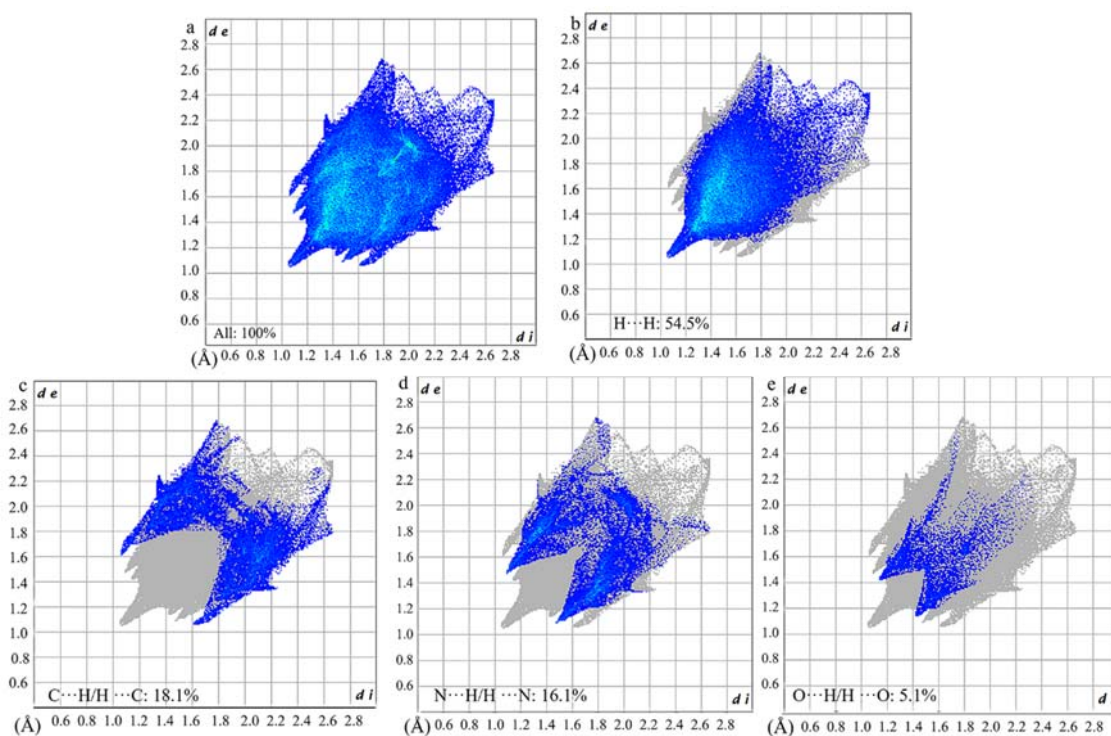


Figure S5 2D fingerprint plots of $L^2 \cdot C_2H_5OH$: All (a) and resolved into $H \cdots H$ (b), $C \cdots H/H \cdots C$ (c), $N \cdots H/H \cdots N$ (d), $O \cdots H/H \cdots O$ (e) contacts showing the percentage participations to the total Hirshfeld surface area.

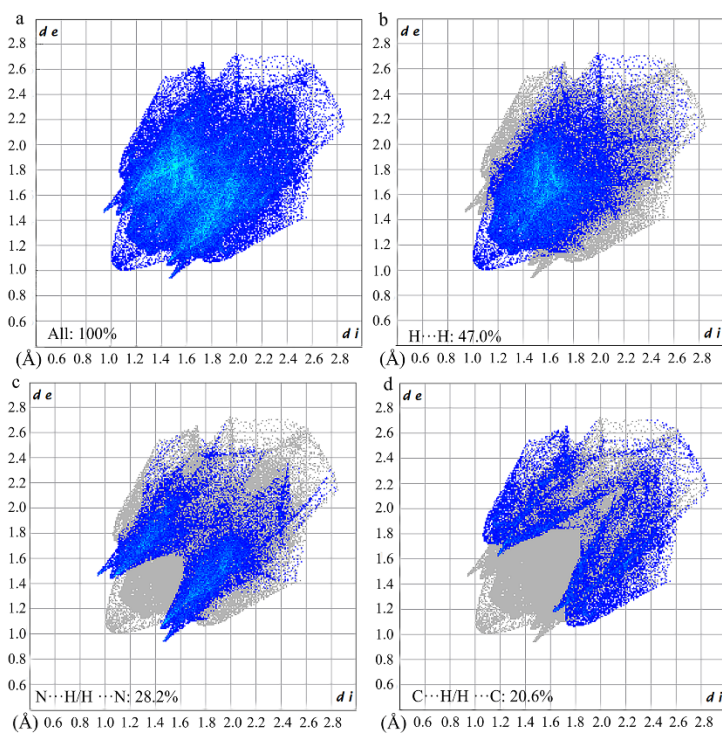


Figure S6 2D fingerprint plots of L^2 : All (a) and resolved into $H \cdots H$ (b), $N \cdots H/H \cdots N$ (c), $C \cdots H/H \cdots C$ (d) contacts showing the percentage participations to the total Hirshfeld surface area.

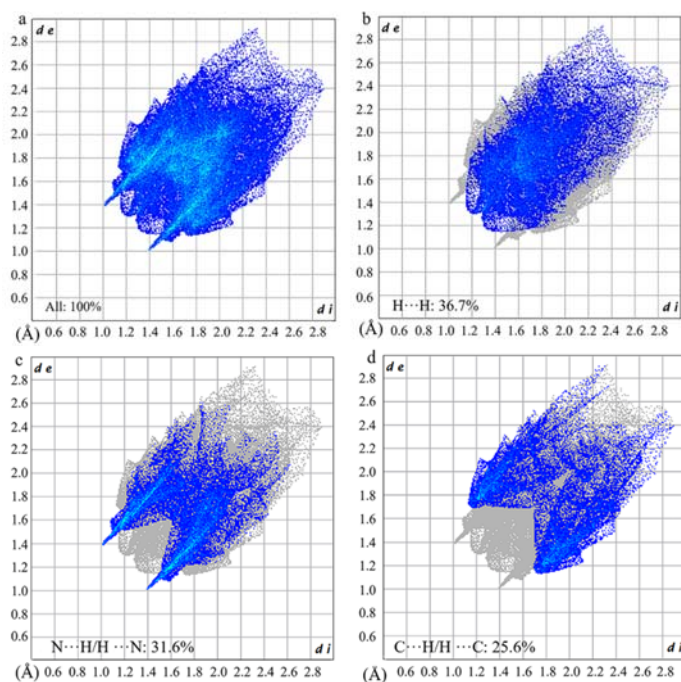


Figure S7 2D fingerprint plots of L^3 : All (a) and resolved into $H\cdots H$ (b), $N\cdots H/H\cdots N$ (c) $C\cdots H/H\cdots C$ (d), contacts showing the percentage participations to the total Hirshfeld surface area.

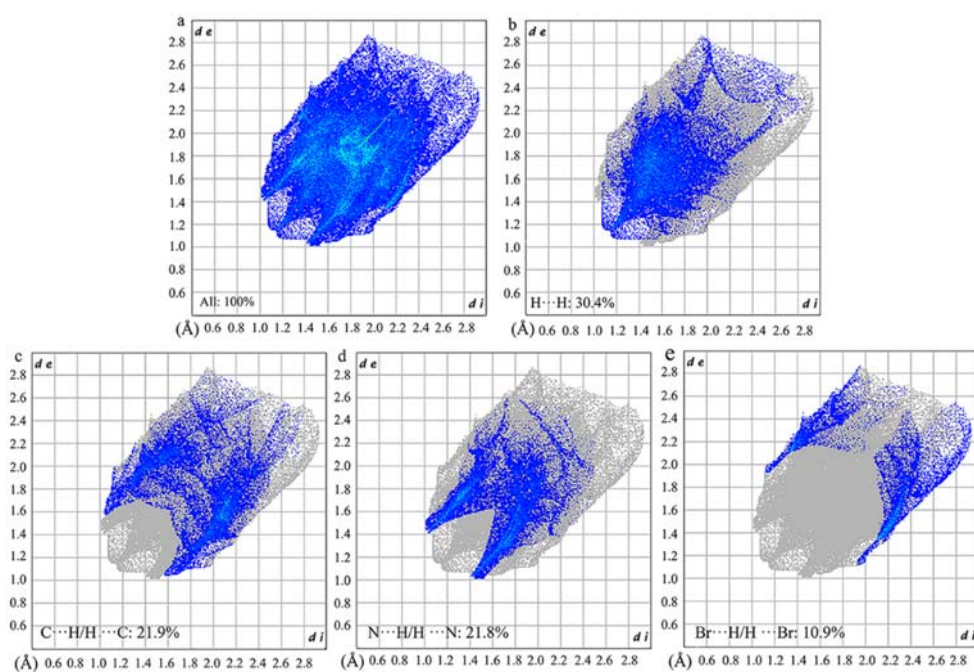


Figure S8 2D fingerprint plots of L^4 : All (a) and resolved into $H\cdots H$ (b), $C\cdots H/H\cdots C$ (c), $N\cdots H/H\cdots N$ (d), $Br\cdots H/H\cdots Br$ (e) contacts showing the percentage participations to the total Hirshfeld surface area.

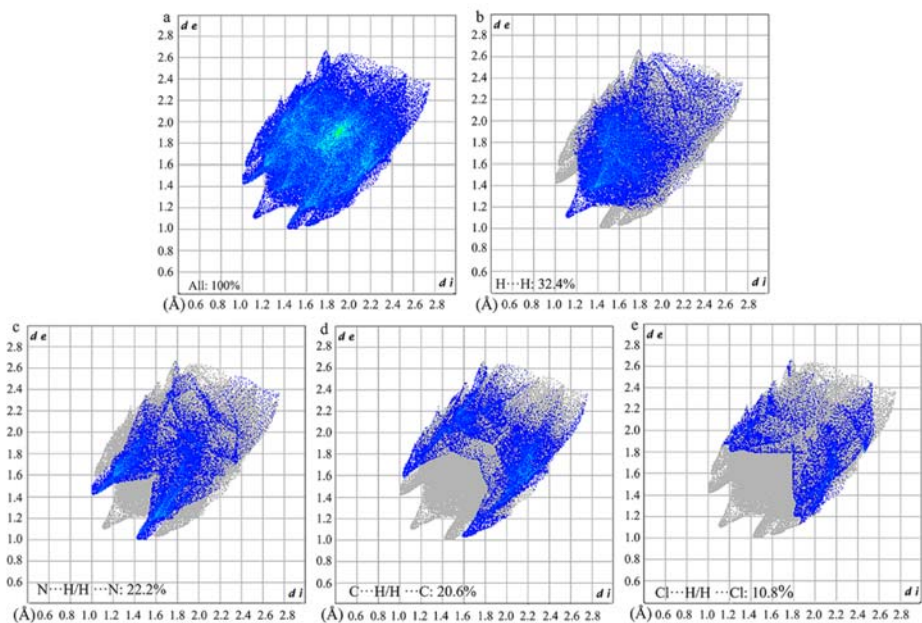


Figure S9 2D fingerprint plots of L^5 : All (a) and resolved into $H\cdots H$ (b), $N\cdots H/H\cdots N$ (c), $C\cdots H/H\cdots C$ (d), $Cl\cdots H/H\cdots Cl$ (e) contacts showing the percentage participations to the total Hirshfeld surface area.

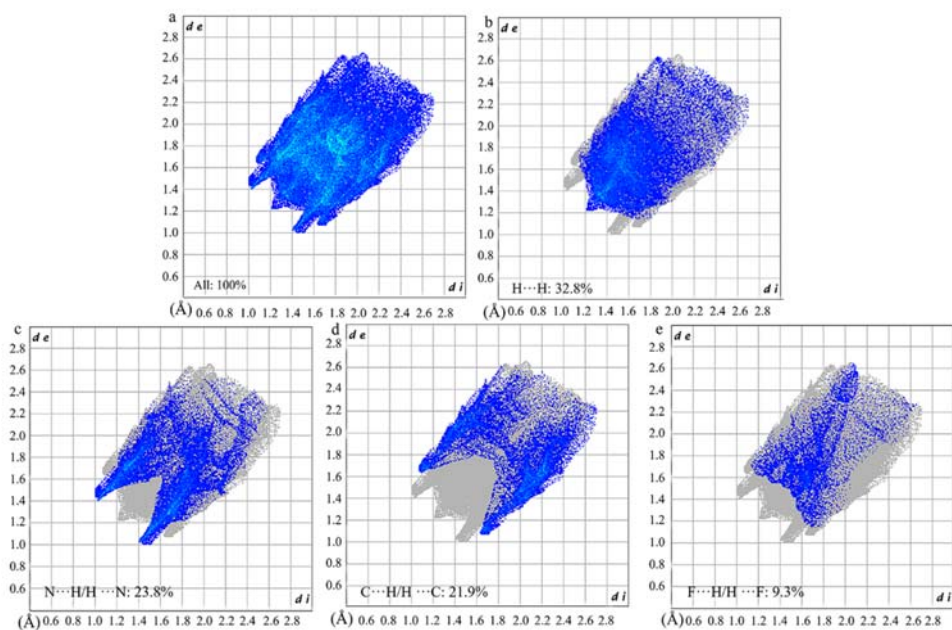


Figure S10 2D fingerprint plots of L^6 : All (a) and resolved into $H\cdots H$ (b), $N\cdots H/H\cdots N$ (c), $C\cdots H/H\cdots C$ (d), $F\cdots H/H\cdots F$ (e) contacts showing the percentage participations to the total Hirshfeld surface area.