



STRUCTURAL
CHEMISTRY

Volume 76 (2020)

Supporting information for article:

**Solvent-assisted planar structure of a stilbene-based
salicylhydrazone compound: crystal structure, solvent and
aggregated-induced emission, and switchable luminescence
colouration**

**Zong-Bin Fang, Bin Zhang, Qi-Zheng Yang, Wenxu Zheng, Xiao-Lin Hu,
Xi-He Huang, Chang-Cang Huang, Nai-Feng Zhuang and Shu-Ting Wu**

CCDC reference number for the titled crystal structure is 1977499.

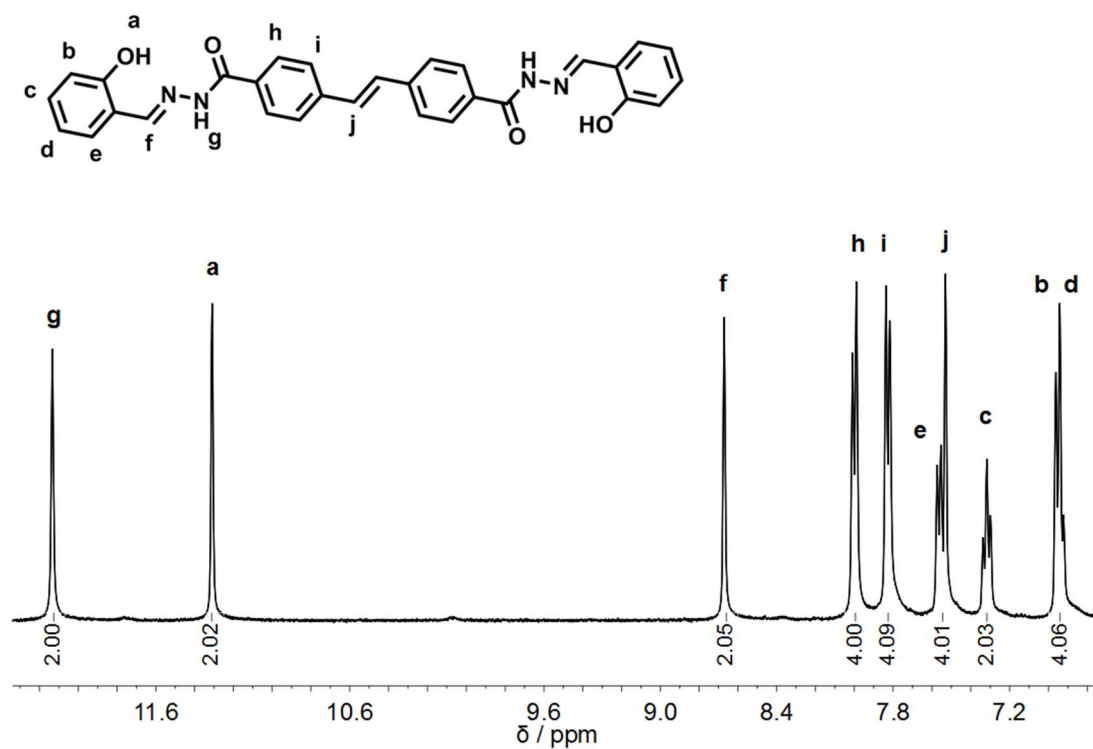


Fig. S1. ¹H-NMR of L in DMSO-d₆ (400M).

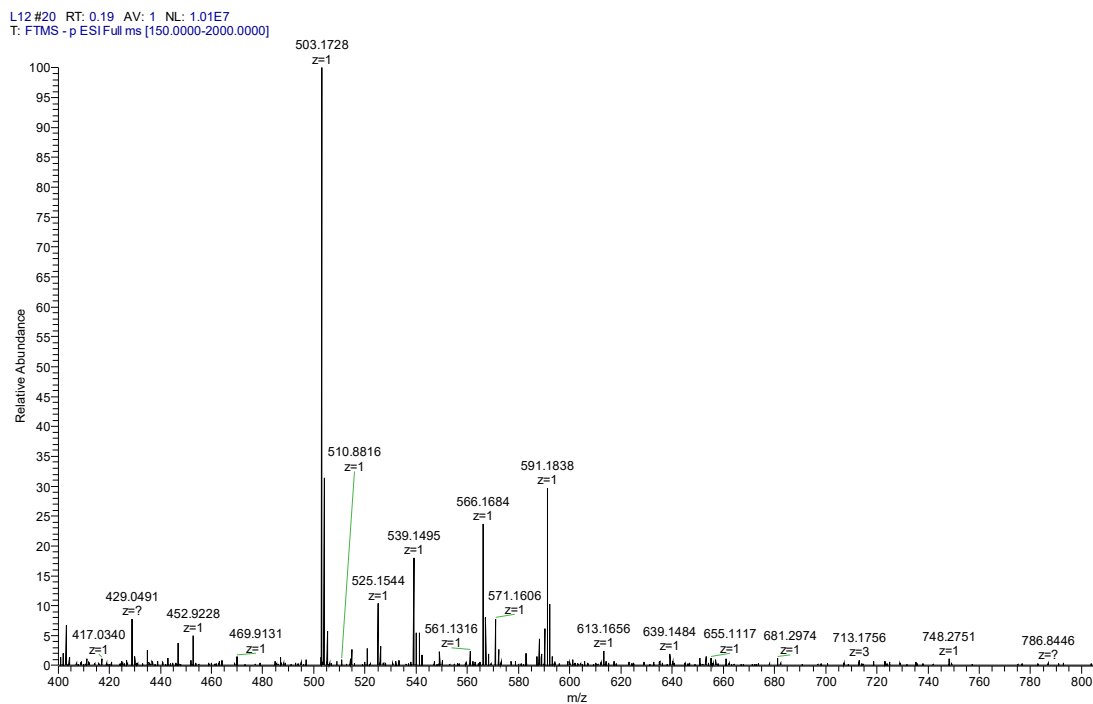


Fig. S2. Mass spectra of L in negative ion mode.

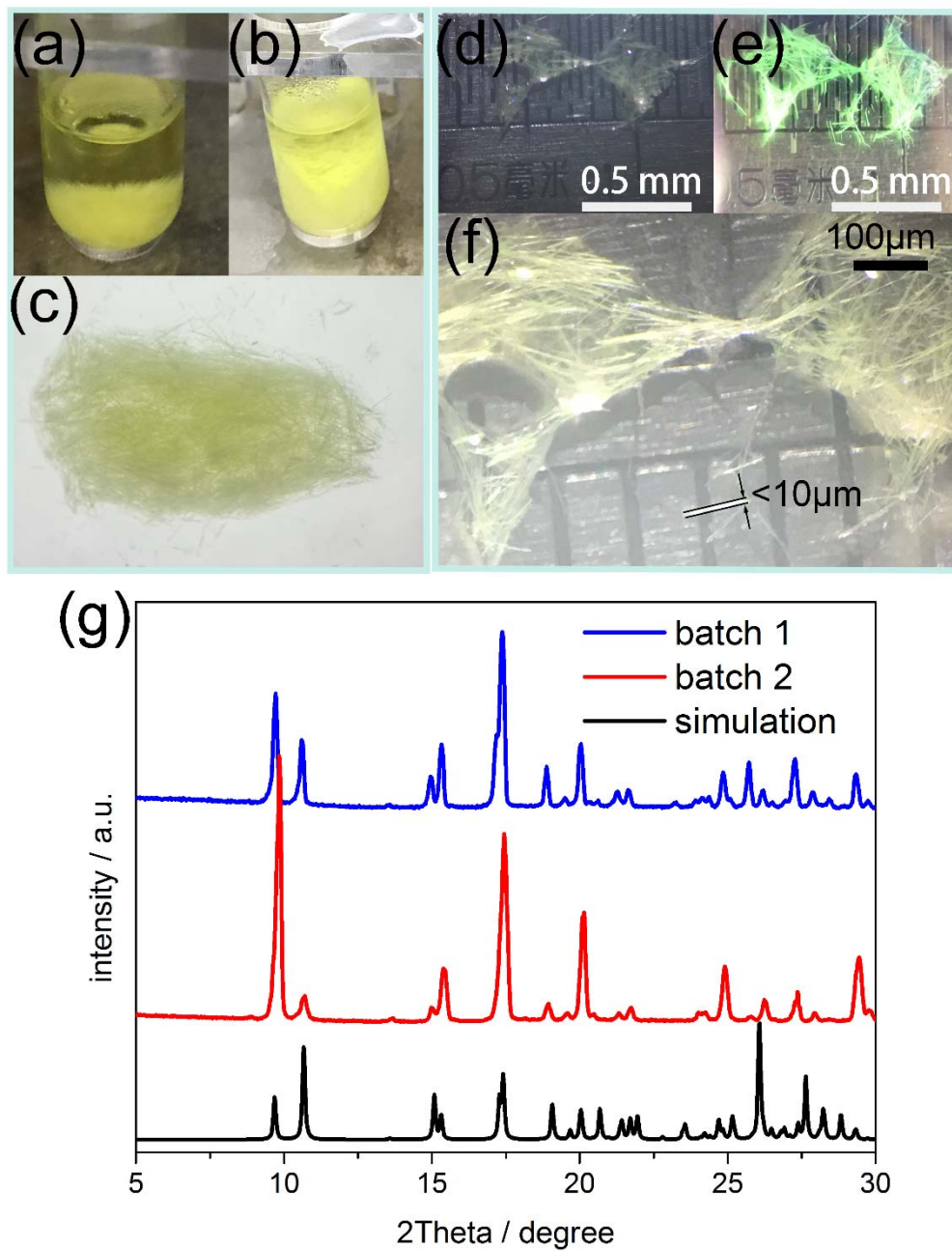


Fig. S3 (a-c) Photos for crystals that grown in two batches. (d-f) Photos of the crystals under optical microscopy, (d, f) daylight, (e) UV light. (g) Powder X-ray diffraction patterns for the synthesized crystals.

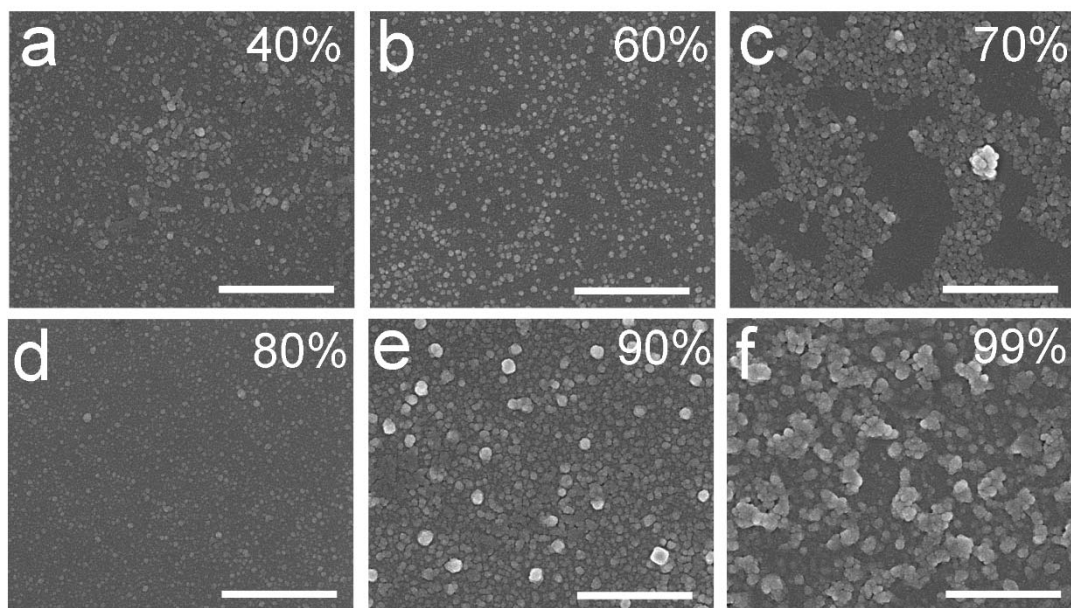


Fig. S4. SEM image for samples whose water fraction f_w is 40%(a), 60%(b), 70%(c), 80%(d), 90%(e) and 99%(f). The scale bar is 1 μm .

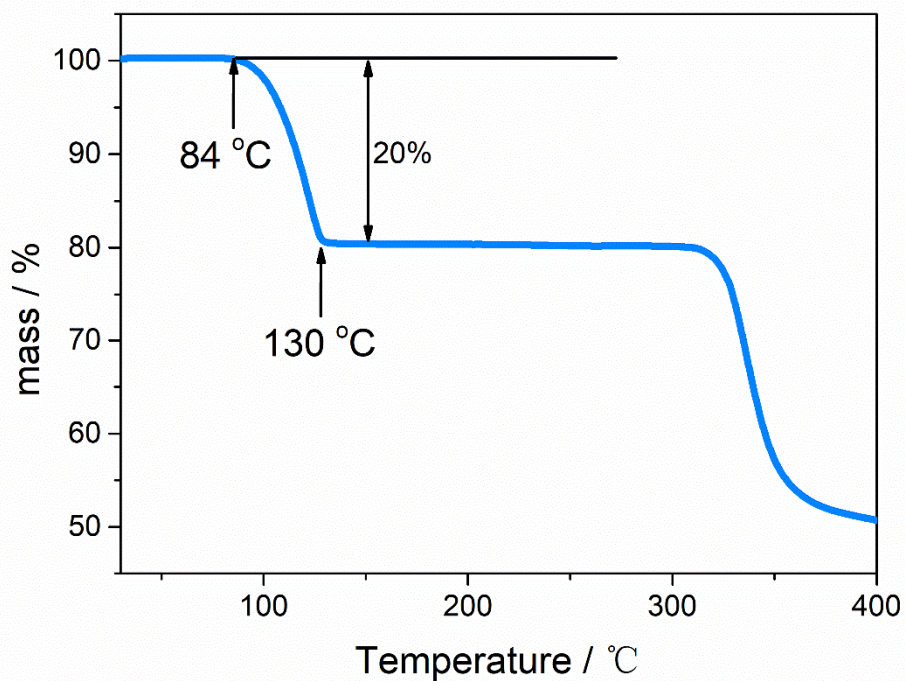


Fig. S5. TGA of L·2 DMSO crystal.