



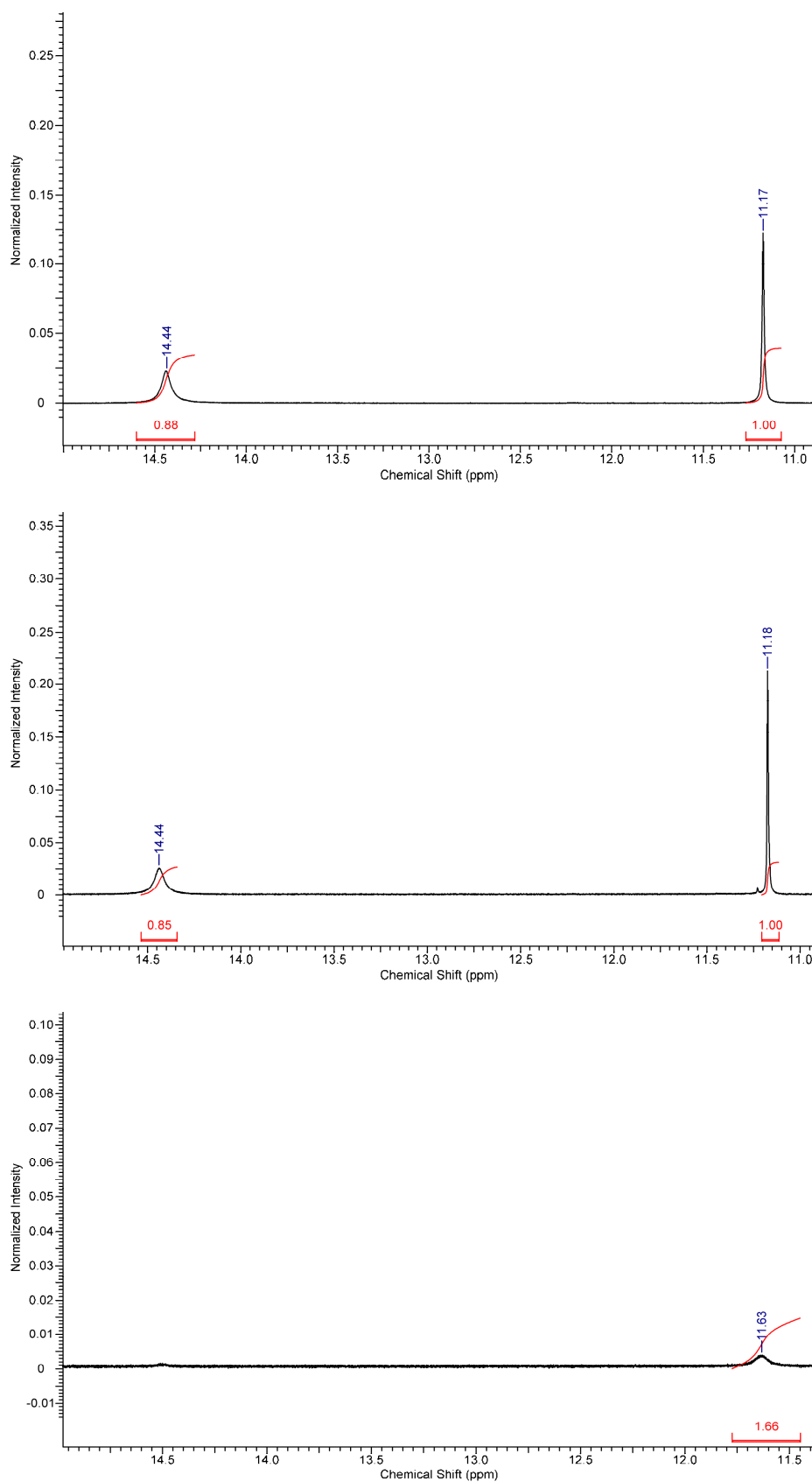
STRUCTURAL  
CHEMISTRY

**Volume 76 (2020)**

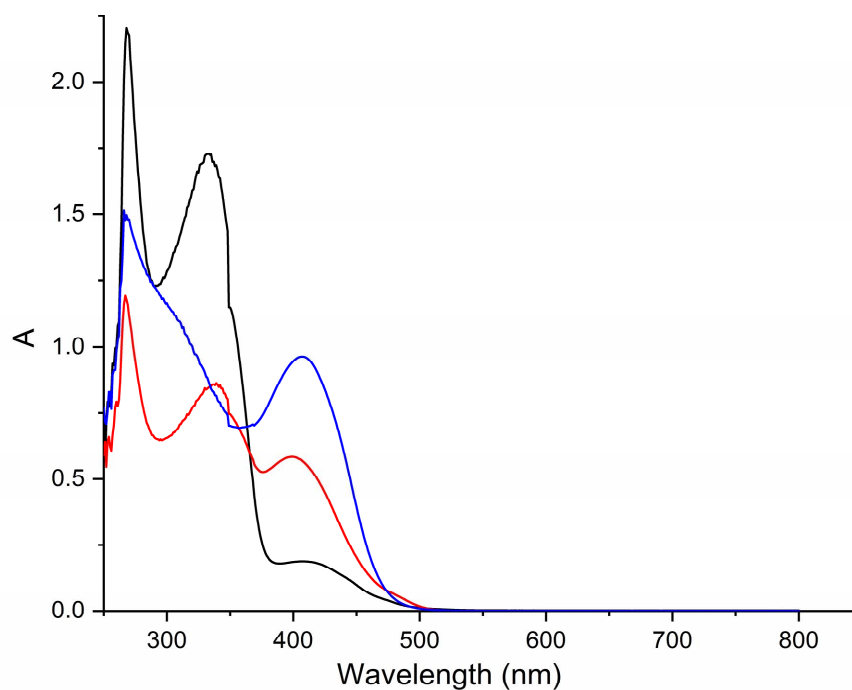
**Supporting information for article:**

**Synthesis and X-ray crystal structures of zinc(II) and mercury(II) complexes based on *N,N'*-(cyclohexane-1,2-diylidene)bis(4-fluorobenzoylhydrazide)**

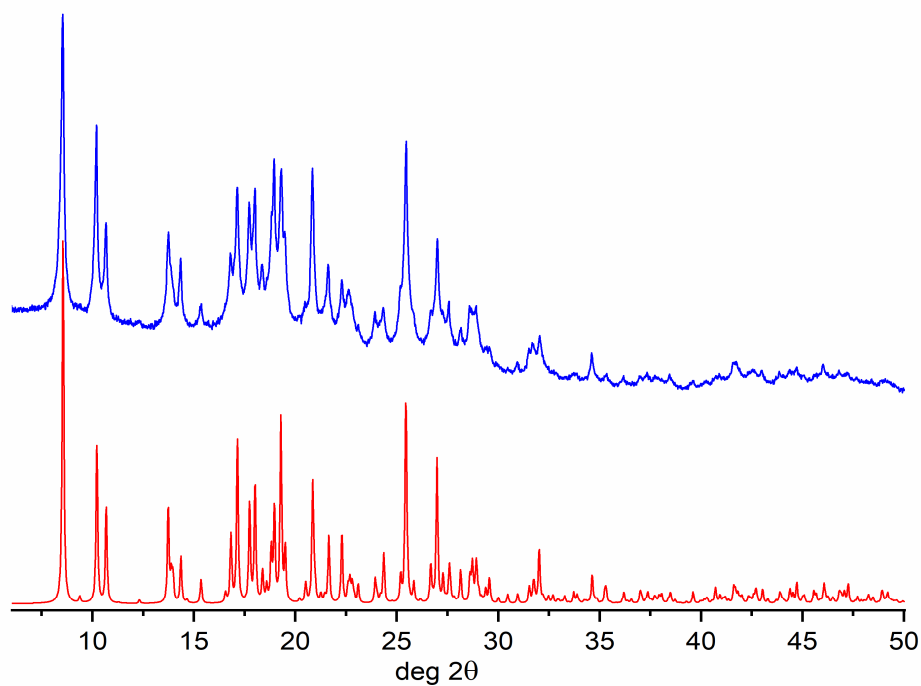
**Al-Ameen Bariz OmarAli, Ahmed Jasim M. Al-Karawi, Adil A. Awad, Necmi Dege, Sevgi Kansız, Erbil Agar, Zaman Ahmed Hussein and Iman Rajab Mohammed**

**Figure S1**

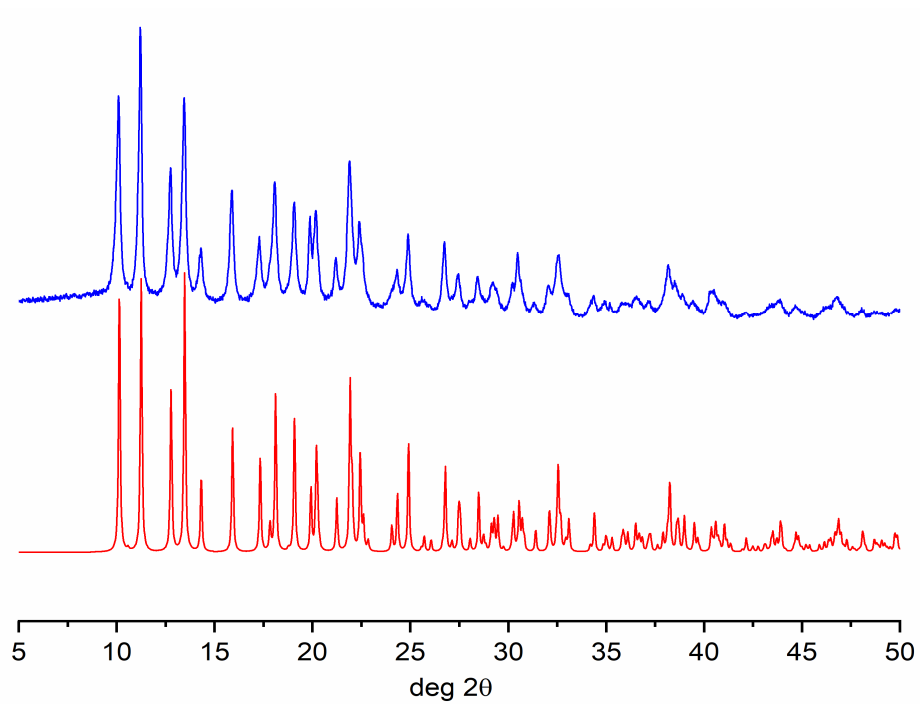
$^1\text{H}$ NMR spectra of  $L^F$  (Top), **1** (Middle) and **2** (Bottom), showing the keto-enol tautomerism

**Figure S2**

UV-Vis spectra of the prepared compounds:  $L^F$  (Black line), **1** (Red line) and **2** (Blue line)

**Figure S3**

X-ray diffraction pattern of **1**: experimental diffraction pattern (Blue line); calculated pattern from single crystal data (Red line)



**Figure S4**

X-ray diffraction pattern of **2**: experimental diffraction pattern (Blue line); calculated pattern from single crystal data (Red line)