



STRUCTURAL
CHEMISTRY

Volume 76 (2020)

Supporting information for article:

Metal-directed supramolecular architectures based on the bifunctional ligand 2,5-bis(1*H*-1,2,4-triazol-1-yl)terephthalic acid

Hua Cai, Na Li, Nan Zhang, Zhenyun Yang, Jing Cao, Yating Lin, Nan Min and Jia Wang

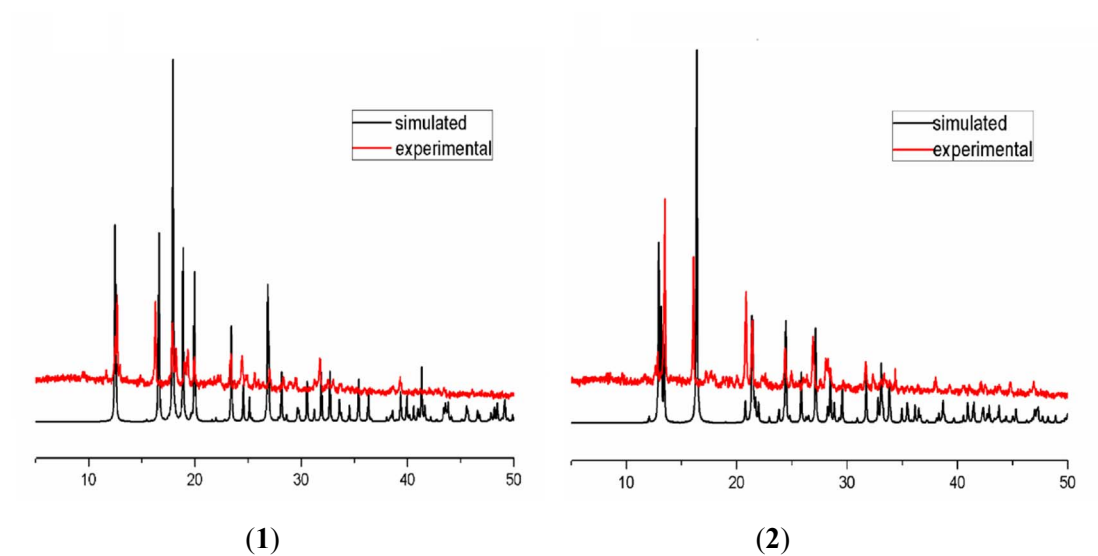


Figure S1. The PXRD patterns of complexes (1) and (2) (experiment and calculation) at room temperature

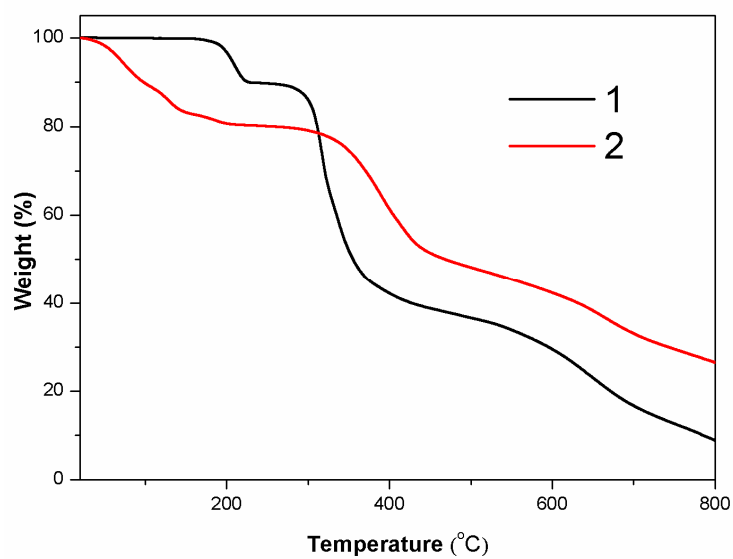


Figure S2. TGA plots of complexes (1) and (2)