



STRUCTURAL
CHEMISTRY

Volume 75 (2019)

Supporting information for article:

Crystal structure, shape analysis and bioactivity of new Li^I, Na^I and Mg^{II} complexes with 1,10-phenanthroline and 2-(3,4-dichlorophenyl)acetic acid

Syed Raza Shah, Zarbad Shah, Najeeb Ullah, Javid Hussain, Rashid Al-Harrasi, Ajmal Khan, Jeremy M. Rawson, Ahmed Al-Harrasi and Muhammad U. Anwar

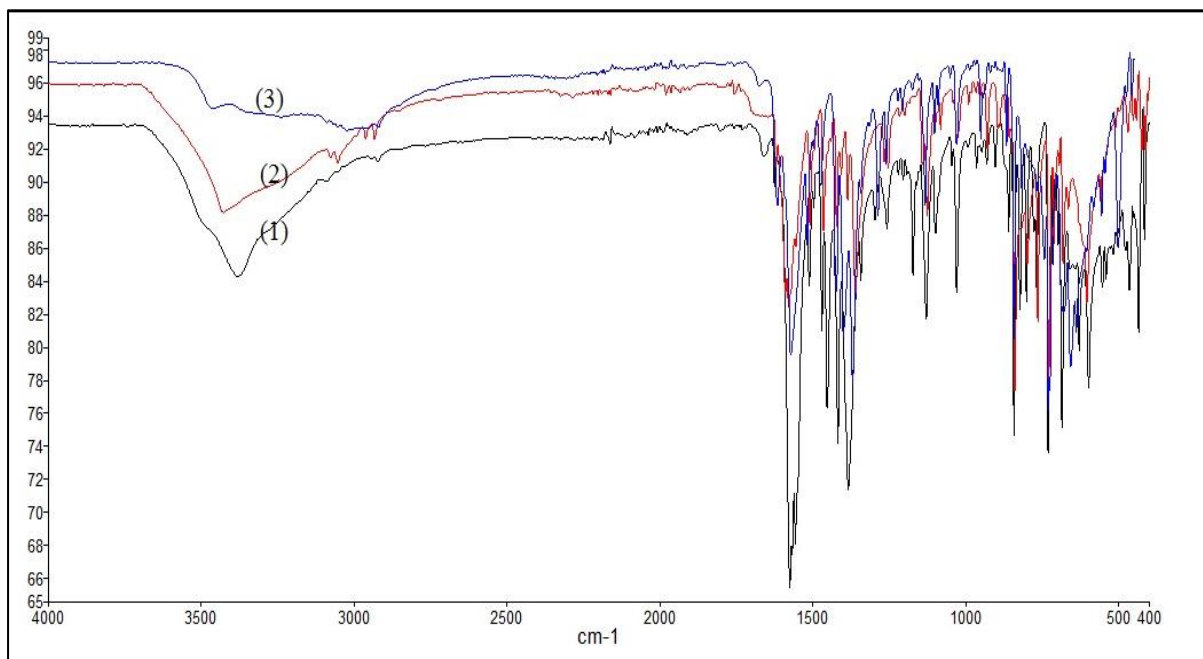


Figure S1: FT-IR Spectra of complexes 1 – 3.

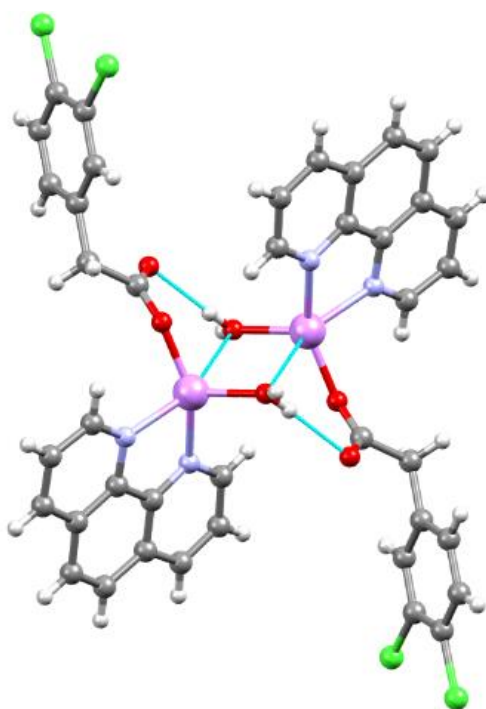
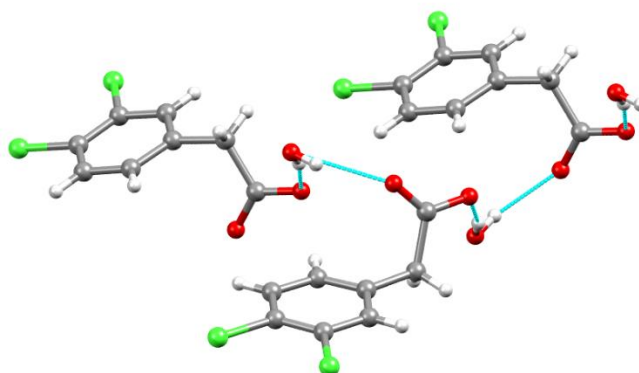


Figure S2: Hydrogen bonded dimeric unit in 1

Figure S3: Hydrogen bonding between un-coordinated lattice dca^- and water molecules in **3**Table S1: Continuous Shape Measures calculation in **1**

	SP-4	T-4	SS-4
	Square (D_{4h})	Tetrahedron (T_d)	Seesaw (C_{2v})
CshM	13.20	7.52	3.862

Table S2: Continuous Shape Measures calculation in **2**

	PP-5	vOC-5	TBPY-5	SPY-5	JTBPY-5
	Pentagone (D_{5h})	Vacant octahedron (C_{4v})	Trigonal bipyramid (D_{3h})	Spherical square pyramid (C_{4v})	Johnson trigonal bipyramid J12 (D_{3h})
CshM	25.46	4.64	3.862	3.09	8.51

Table S3: Continuous Shape Measures calculation in **3**

	HP-6	PPY-6	OC-6	TPR-6	JPPY-6
	Hexagon (D_{6h})	Pentagonal pyramid (C_{5v})	Octahedron (O_h)	Trigonal prism (D_{3h})	Johnson pentagonal pyramid J2 (C_{5v})
CshM	32.58	26.49	0.641	13.80	29.78