



STRUCTURAL
CHEMISTRY

Volume 74 (2018)

Supporting information for article:

**Mixed natural arylolefin–quinoline platinum(II) complexes:
synthesis, structural characterization and *in vitro* cytotoxicity
studies**

**Nguyen Thi Thanh Chi, Pham Van Thong, Truong Thi Cam Mai and Luc Van
Meervelt**

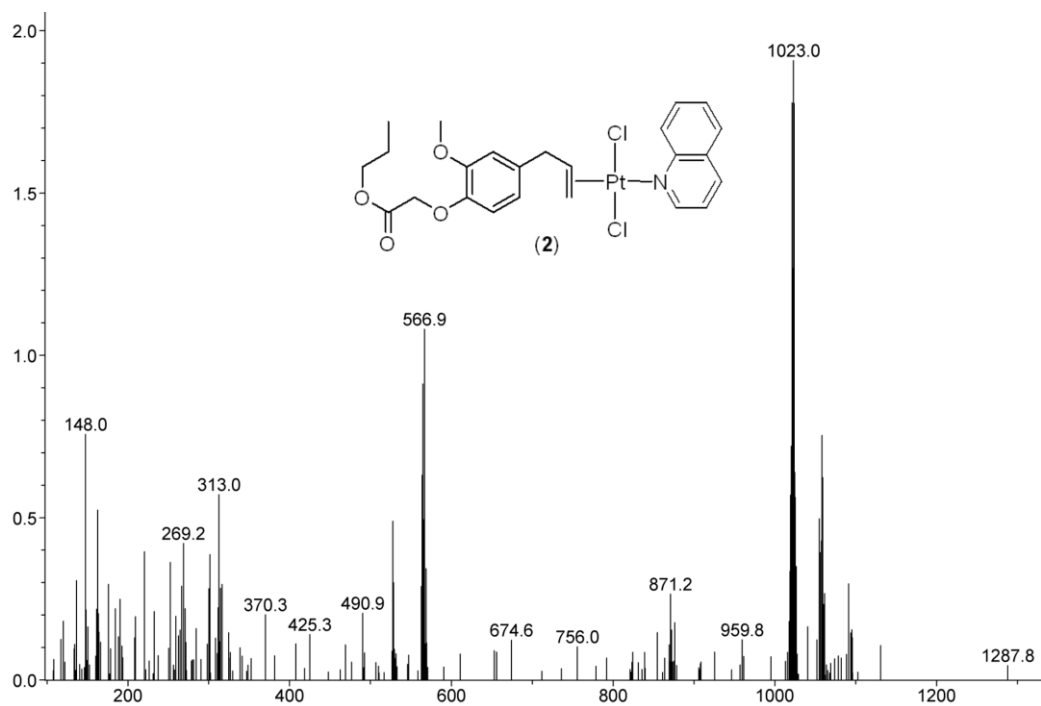


Figure S1 -ESI mass spectrum of (2).

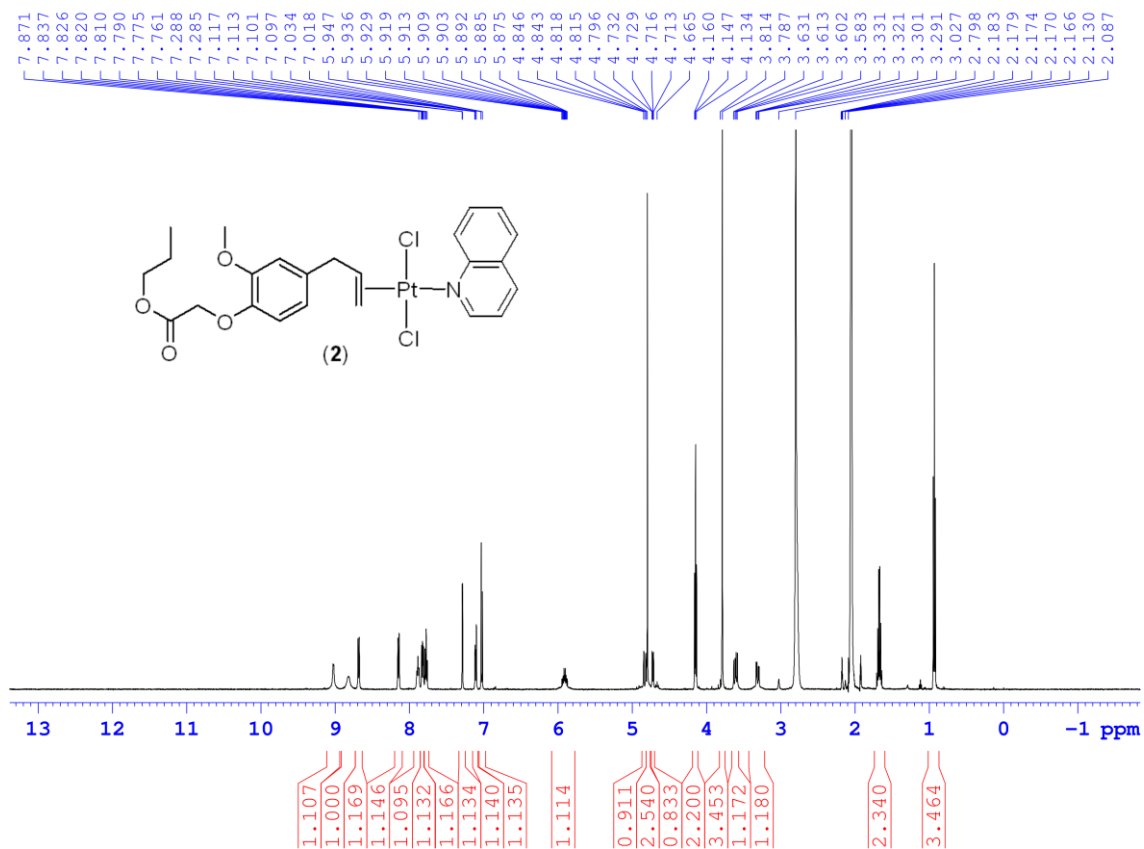


Figure S2 ¹H NMR spectrum of (2) (acetone-*d*₆).

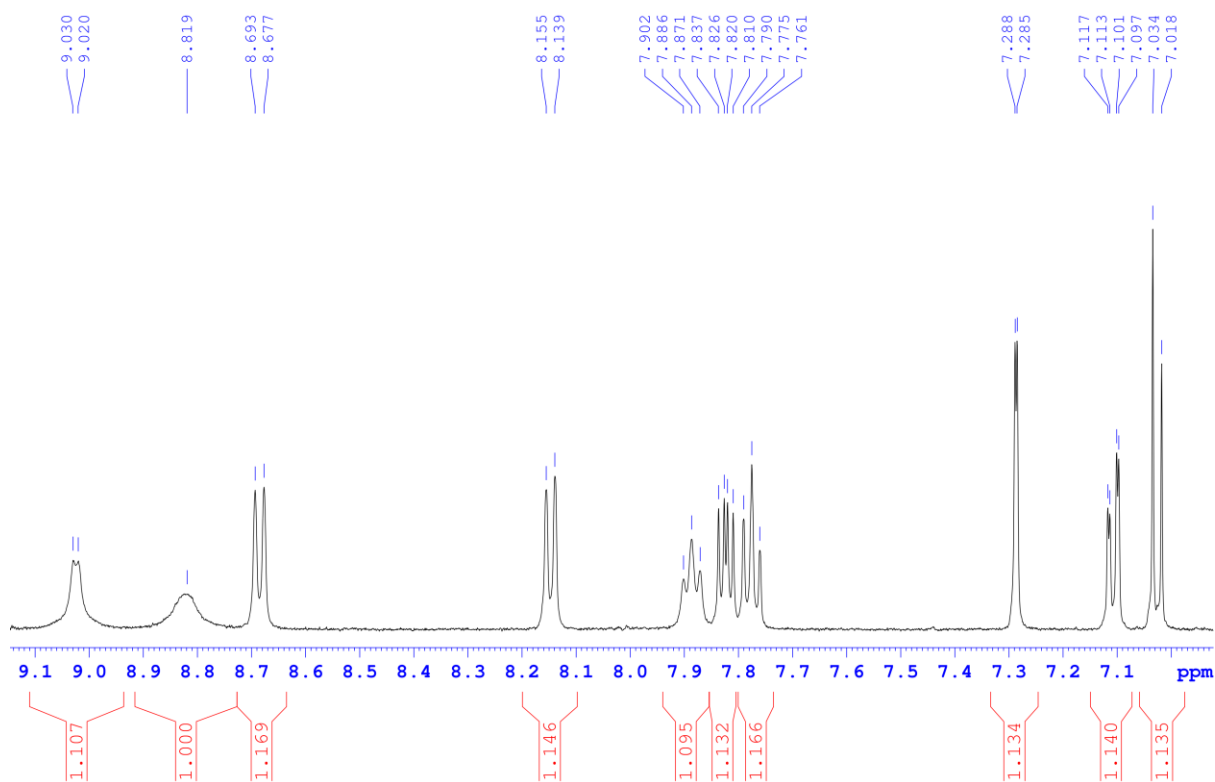


Figure S3 ¹H expanded NMR spectrum of (2).

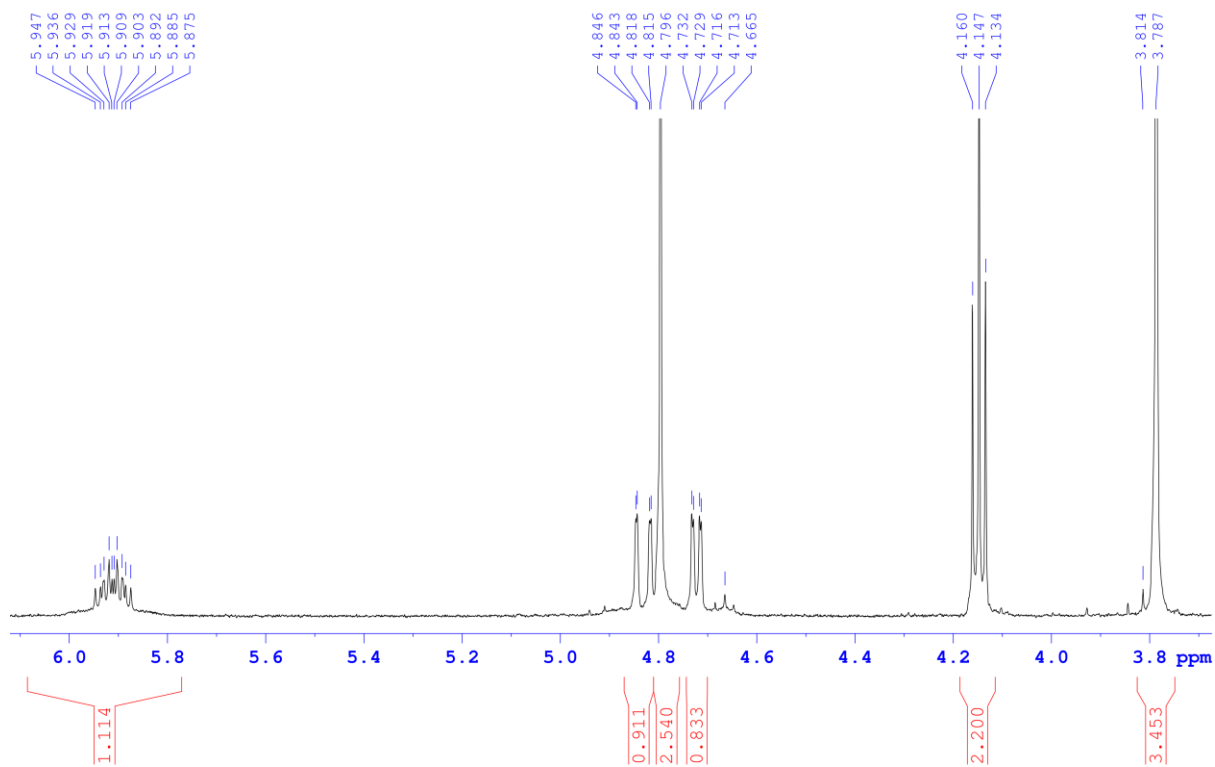


Figure S4 ¹H expanded NMR spectrum of (2).

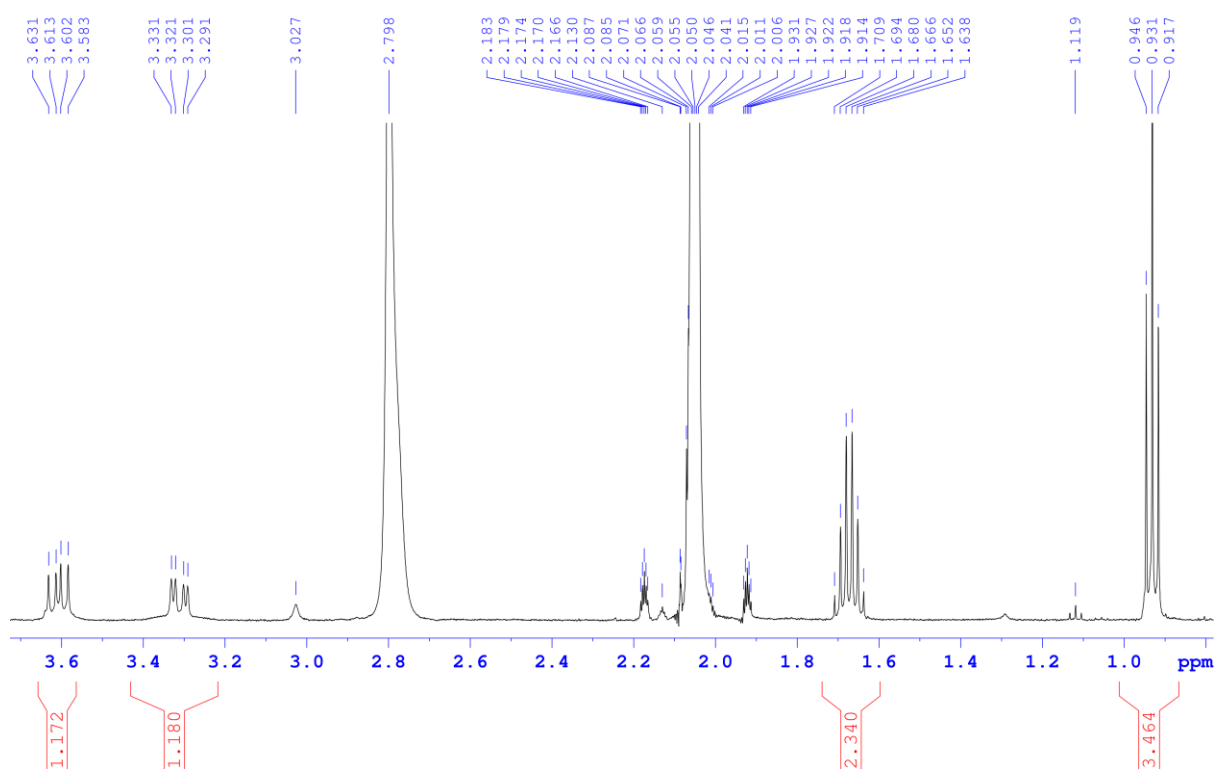


Figure S5 ^1H expanded NMR spectrum of (2).



Figure S6 -ESI mass spectrum of (3).

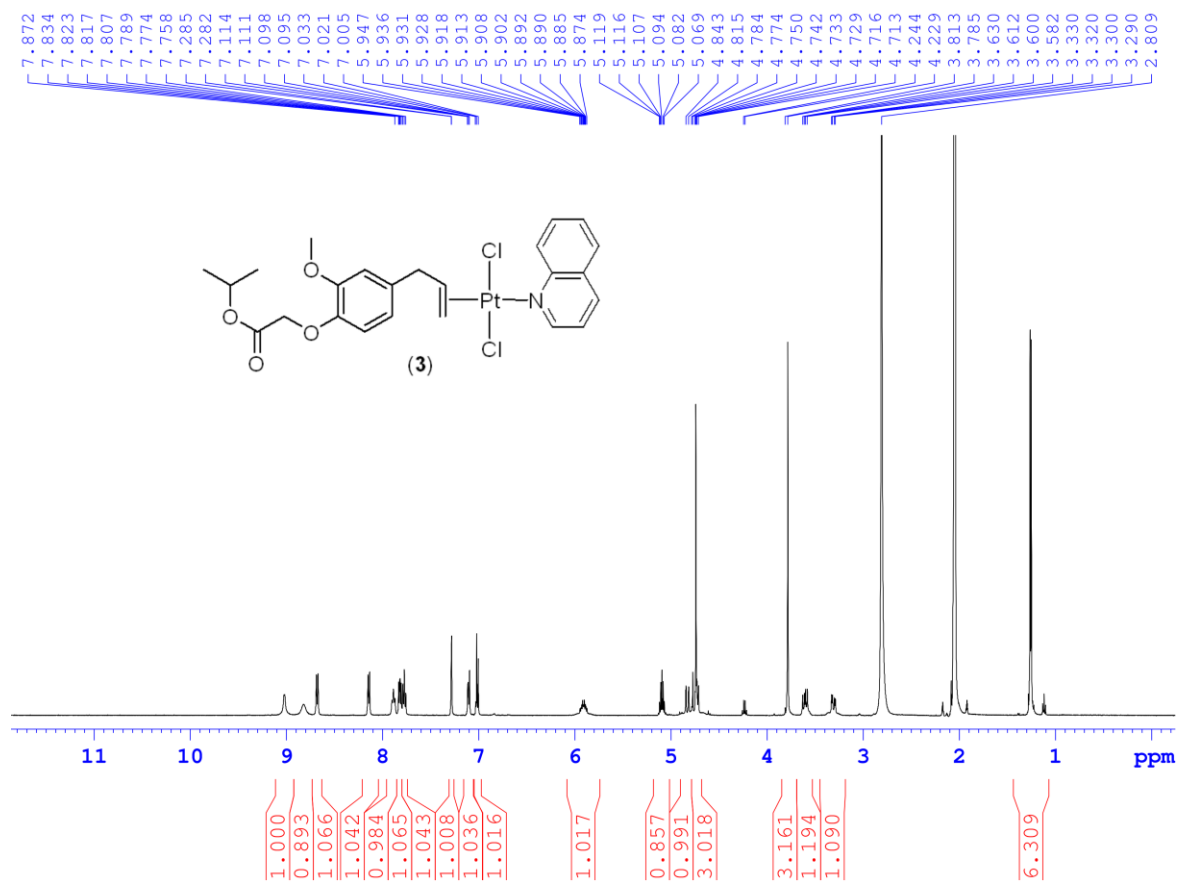


Figure S7 ^1H NMR spectrum of (3) (acetone- d_6).

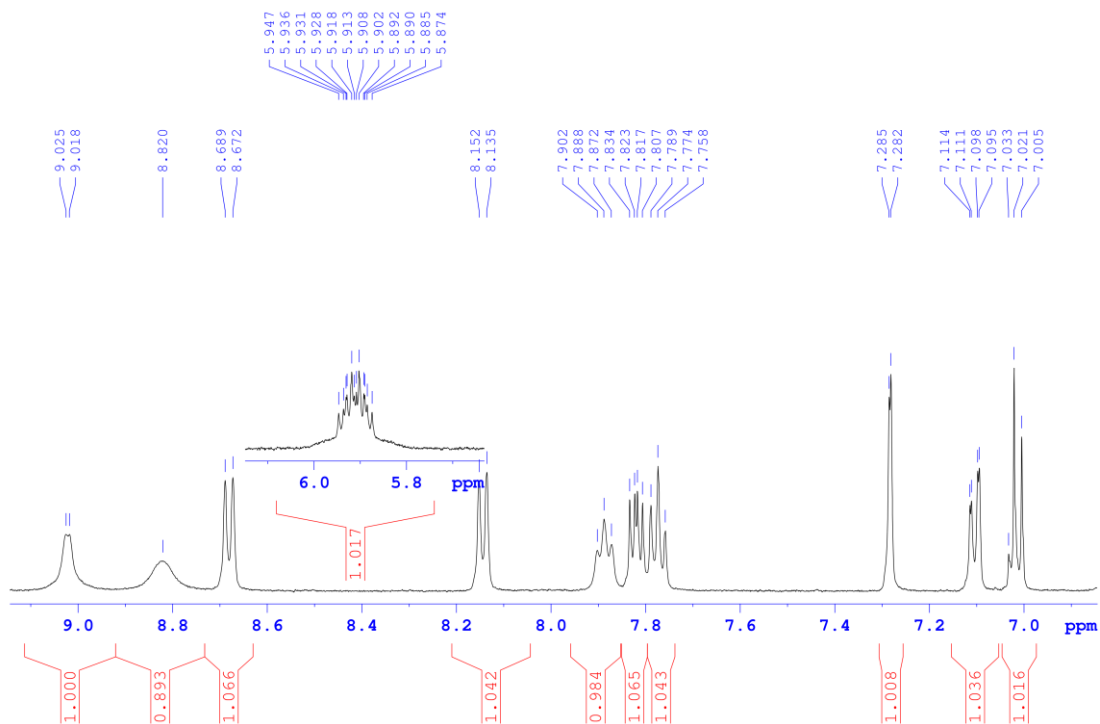


Figure S8 ^1H expanded NMR spectrum of (3).

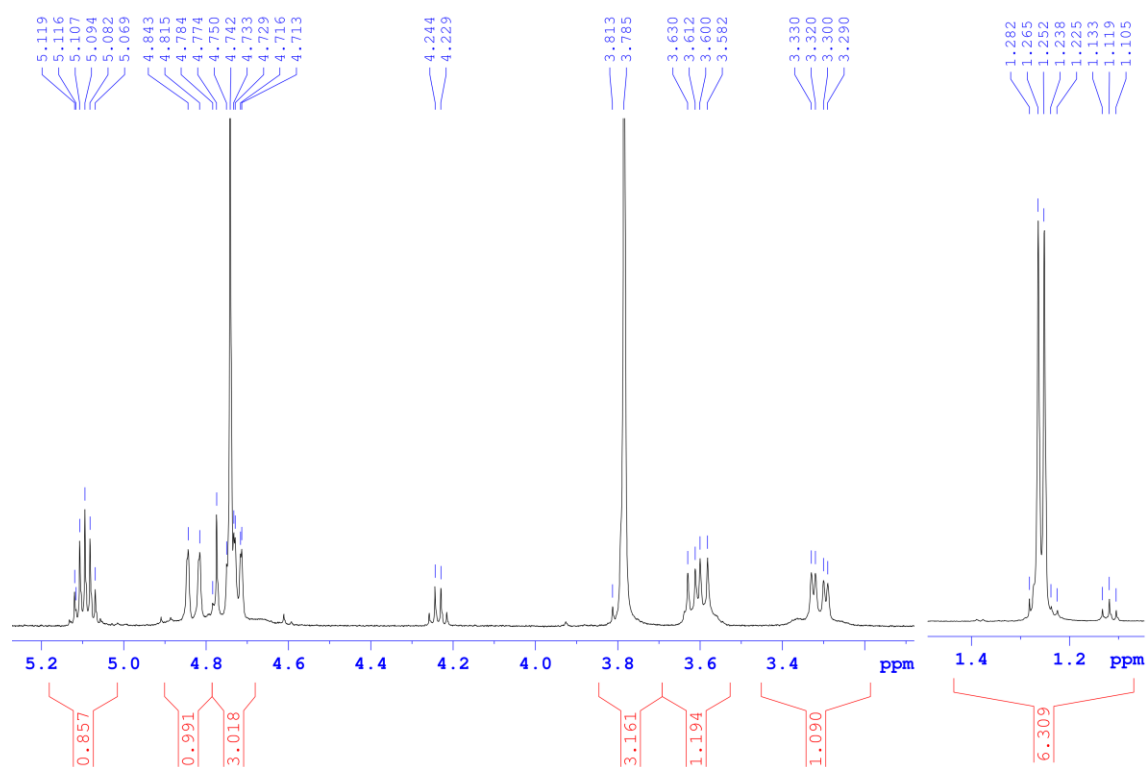


Figure S9 ^1H expanded NMR spectrum of (3).

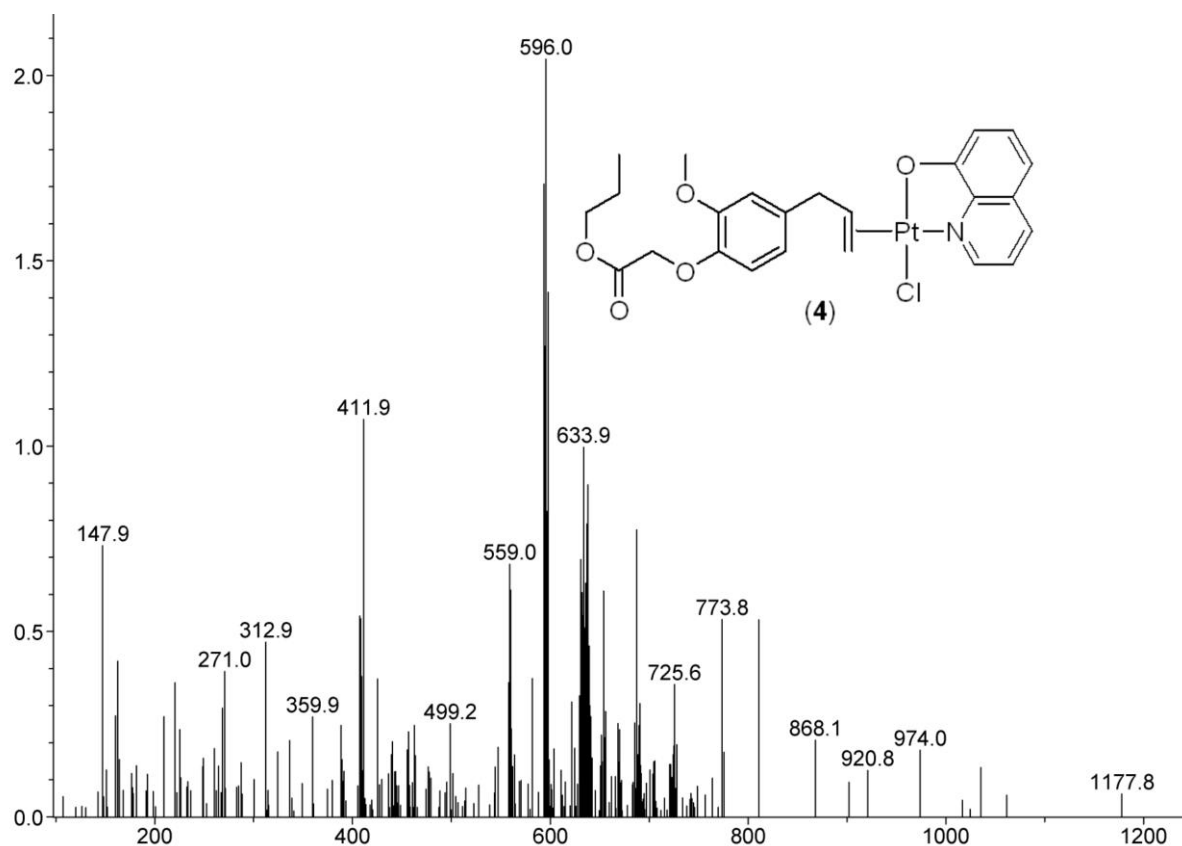


Figure S10-ESI mass spectrum of (4).

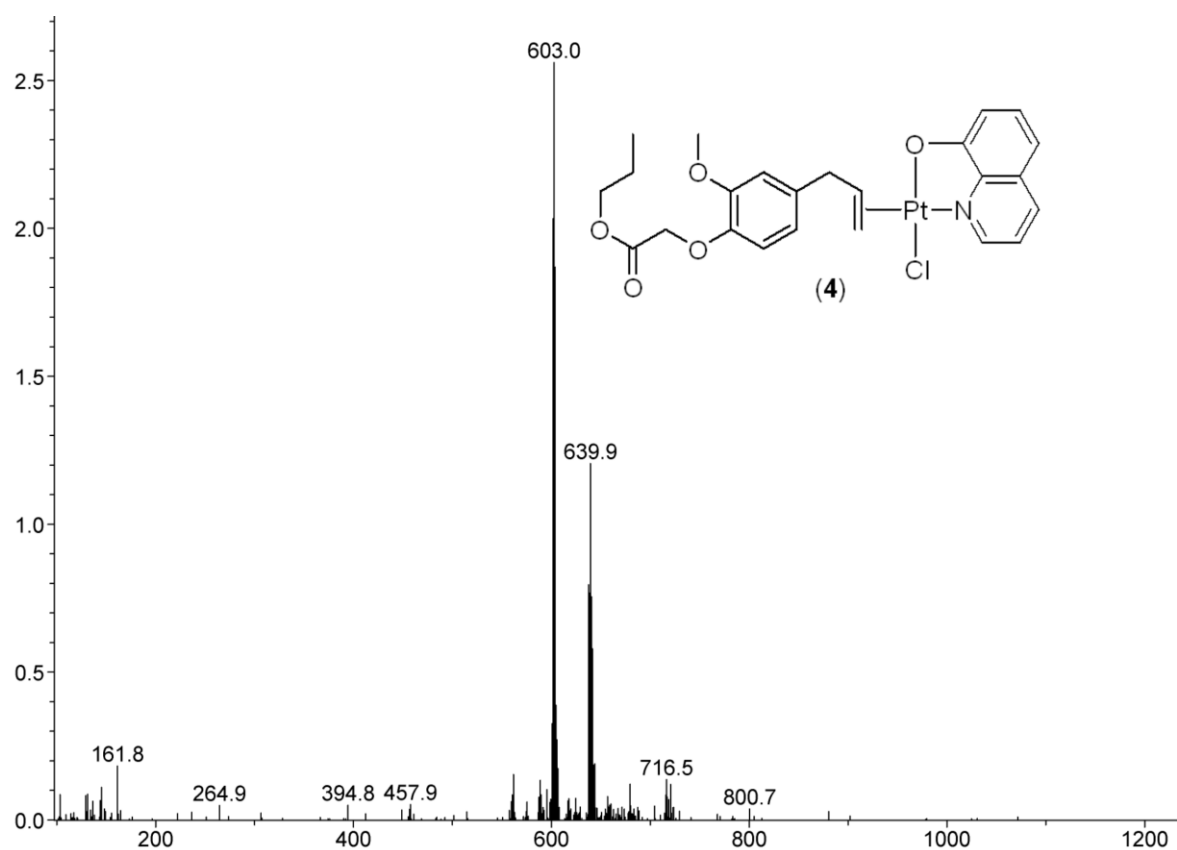


Figure S11-ESI mass spectrum of (4).

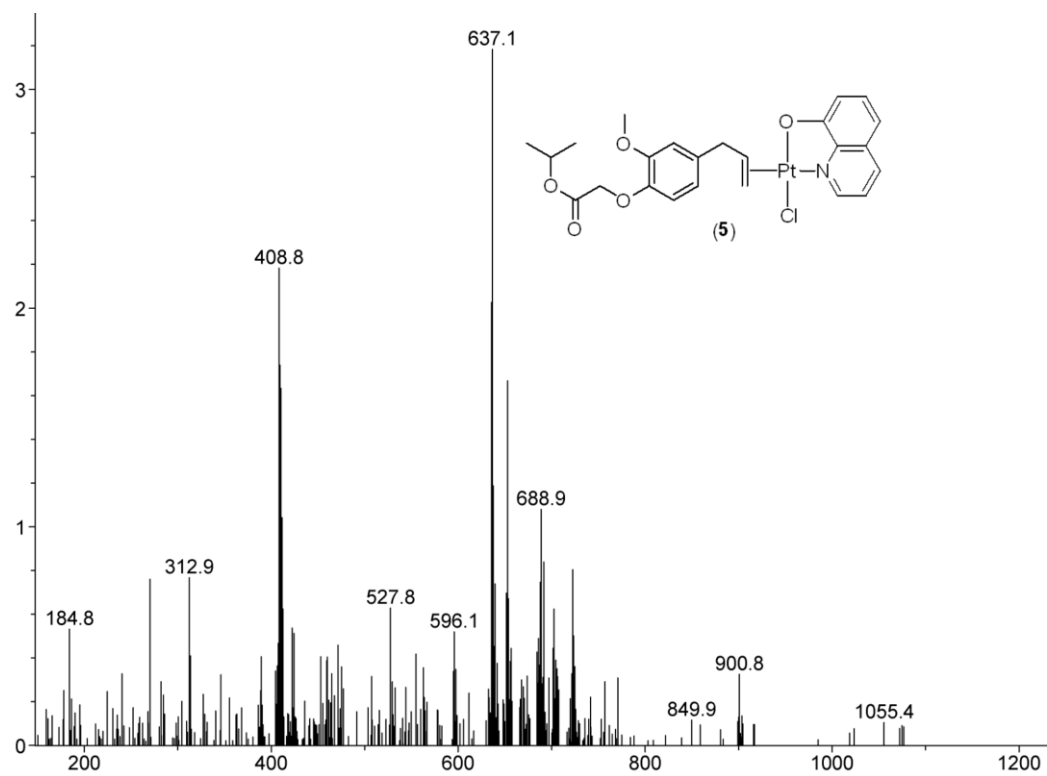


Figure S12-ESI mass spectrum of (5).

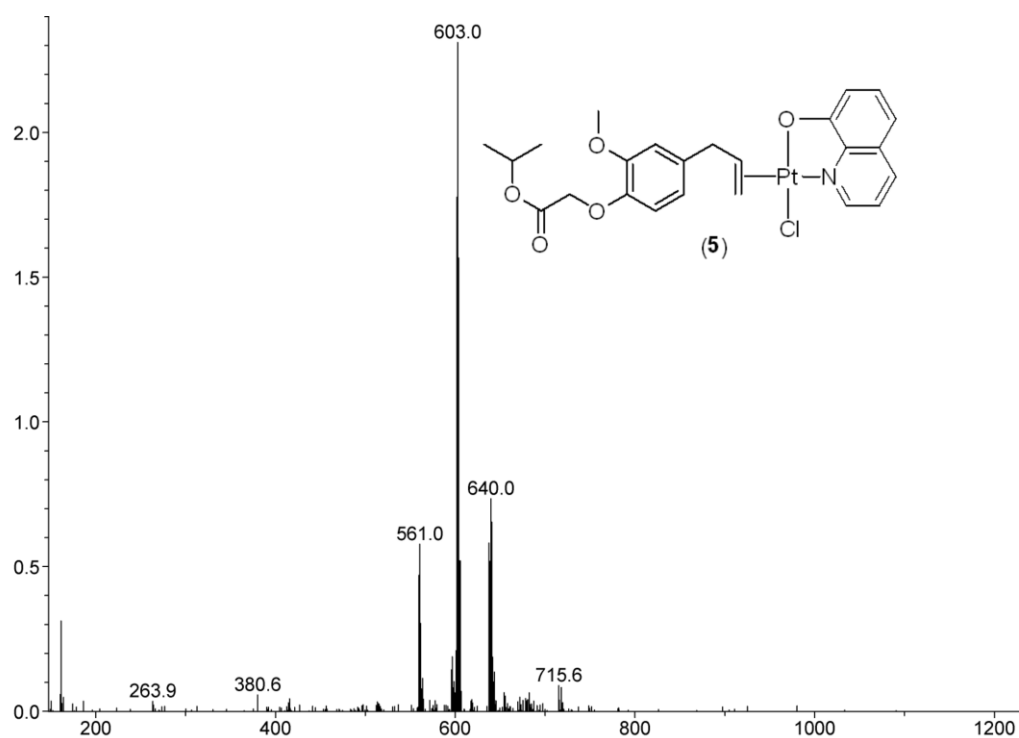


Figure S13 +ESI mass spectrum of (5).

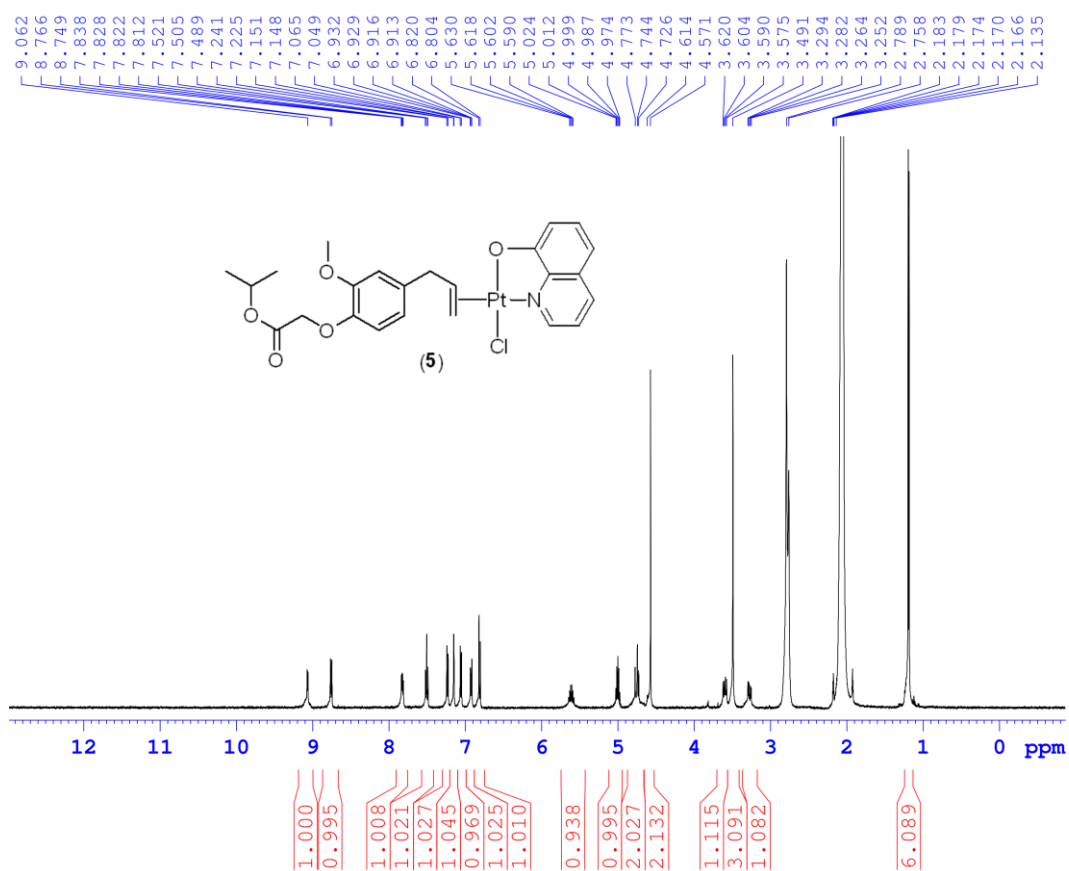


Figure S14 ¹H NMR spectrum of (5) (acetone-*d*₆).

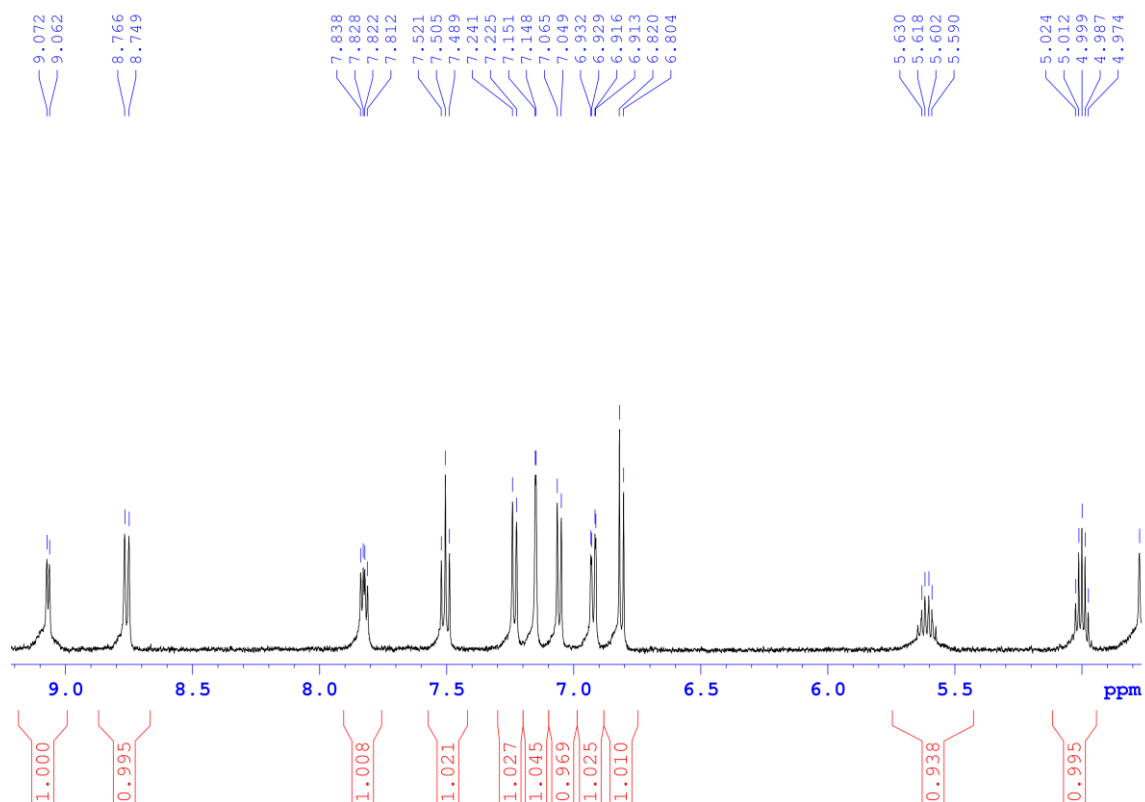


Figure S15 ^1H expanded NMR spectrum of (5).

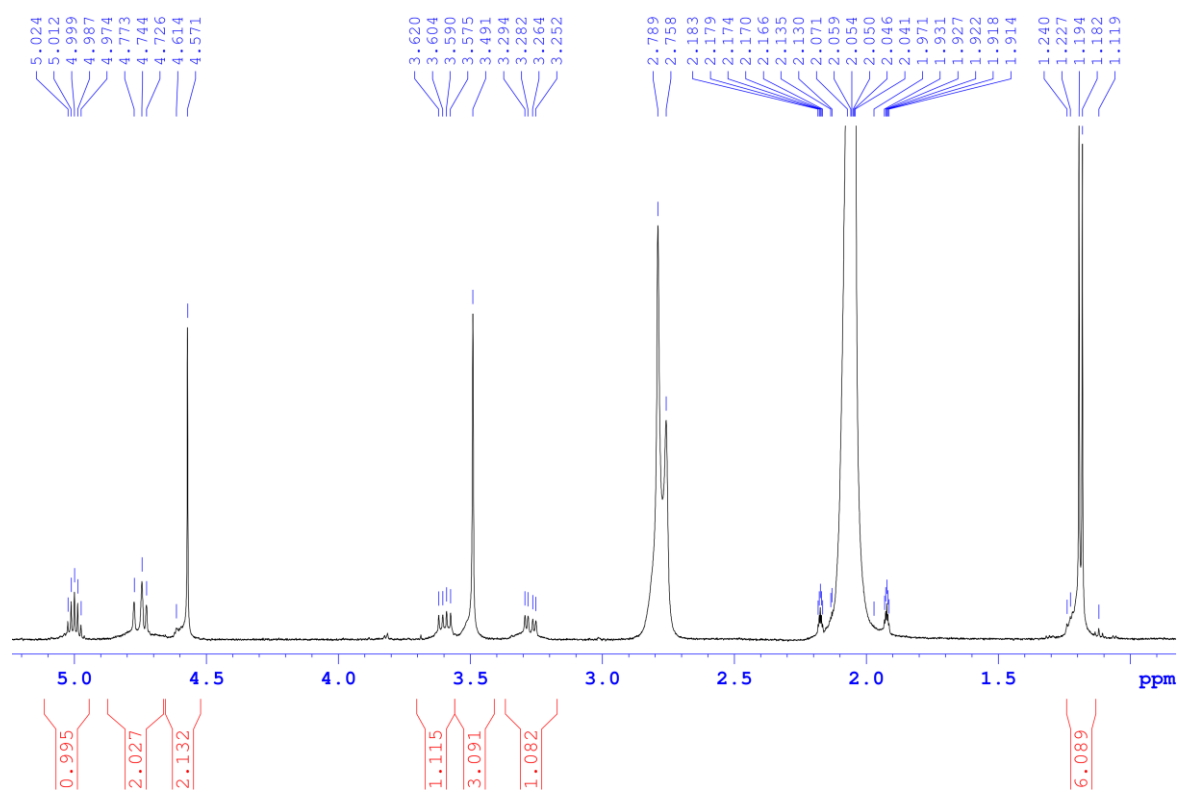


Figure S16 ^1H expanded NMR spectrum of (5).

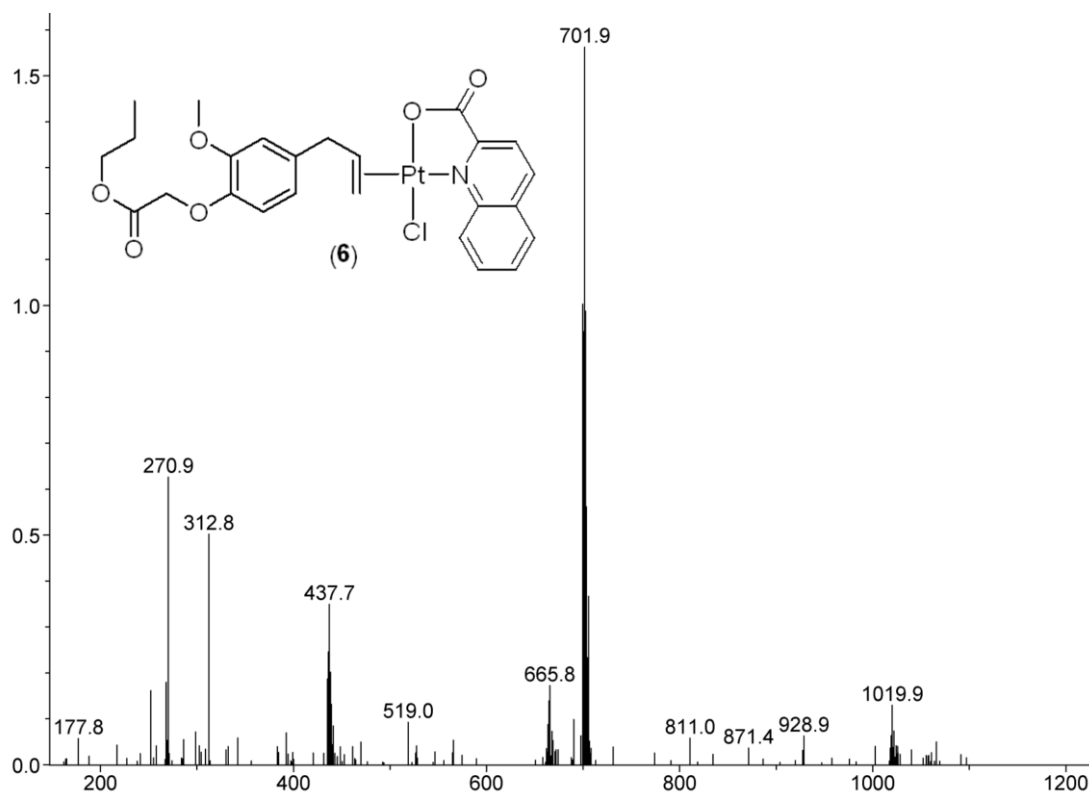


Figure S17-ESI mass spectrum of (6).

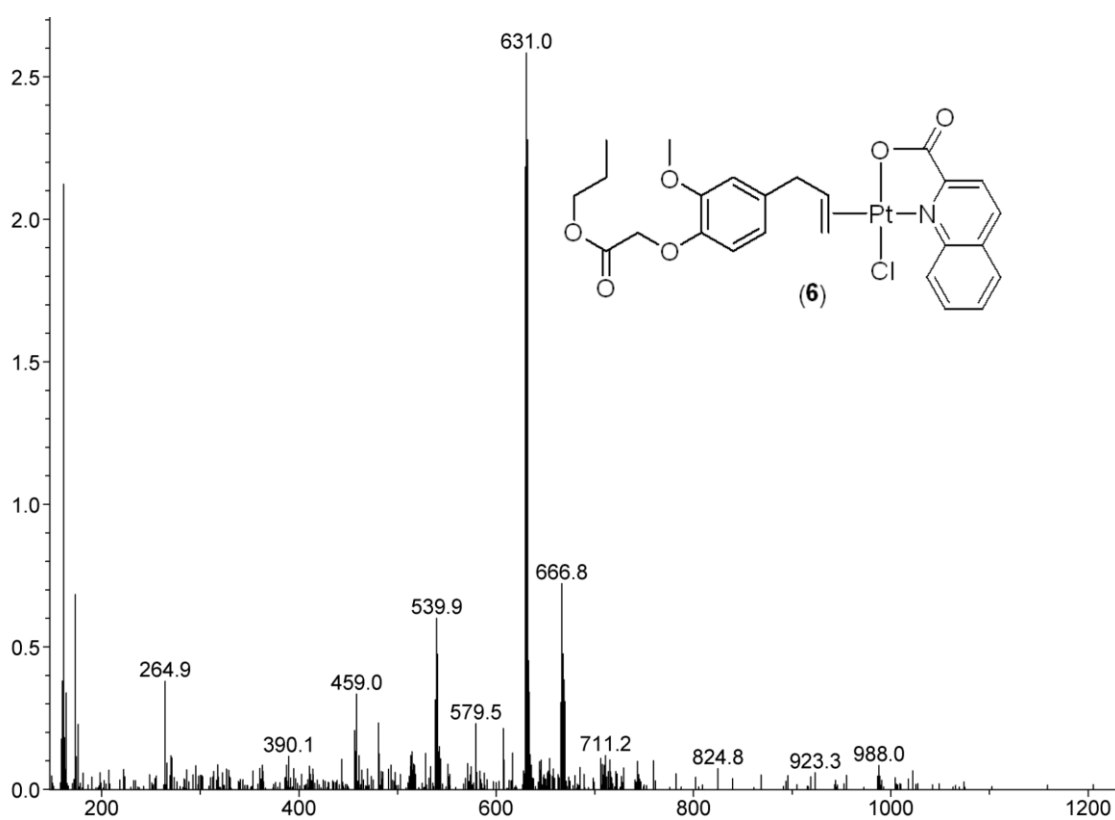


Figure S18+ESI mass spectrum of (6).

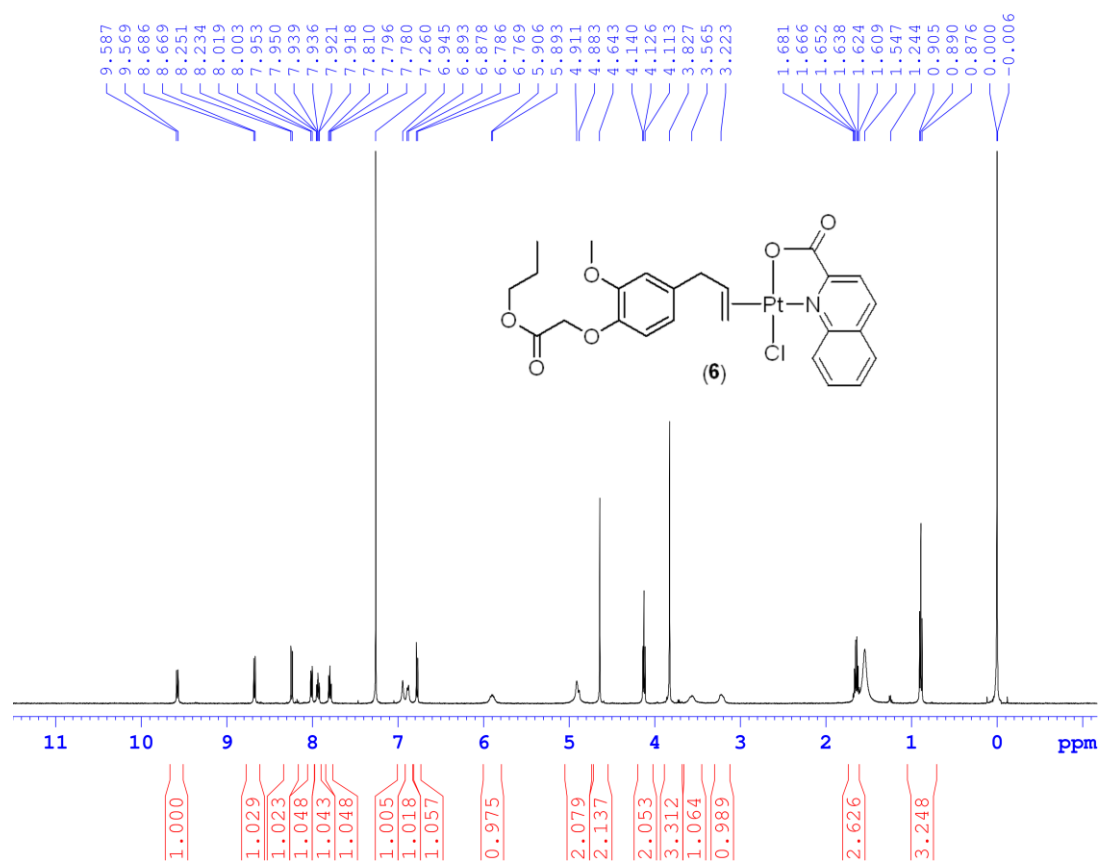


Figure S19 ^1H NMR spectrum of (6) (chloroform- d_1).

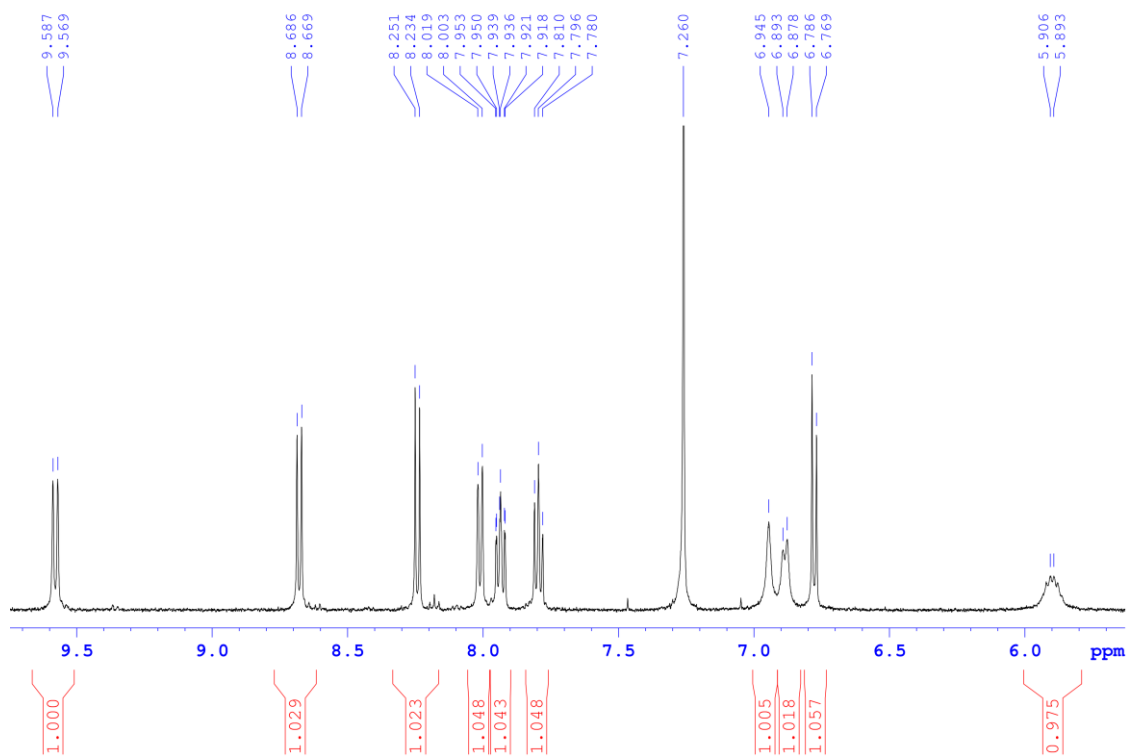


Figure S20 ^1H expanded NMR spectrum of (6).

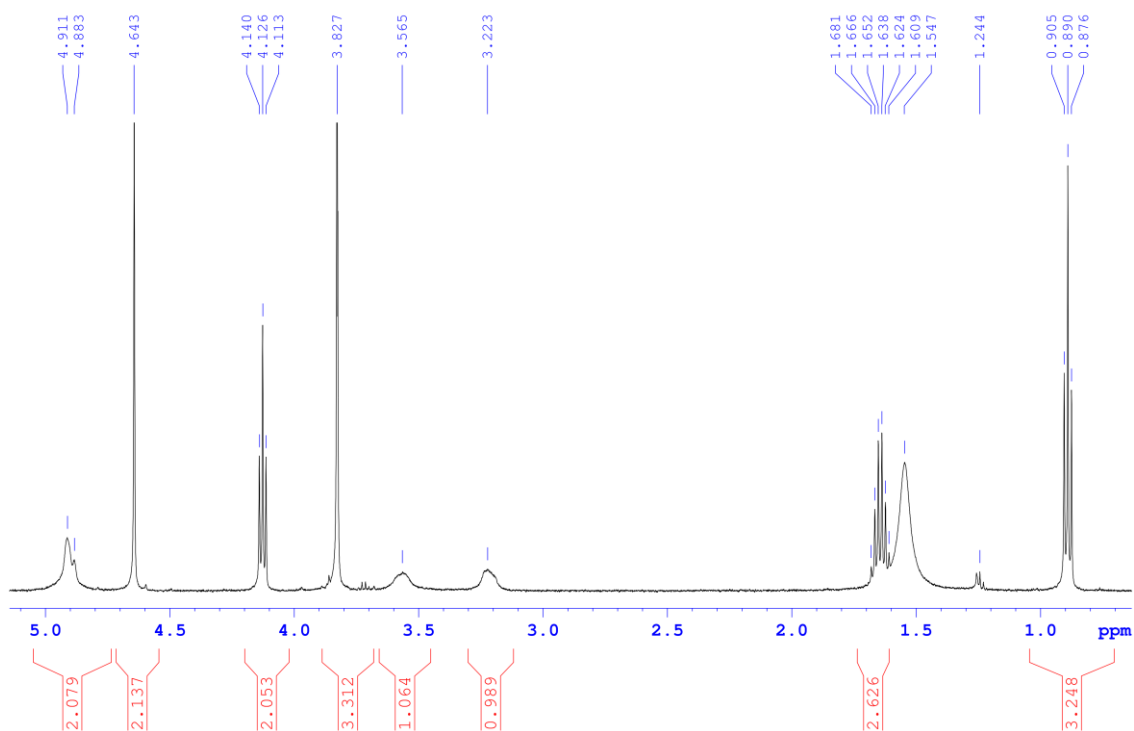


Figure S21 ^1H expanded NMR spectrum of (6).

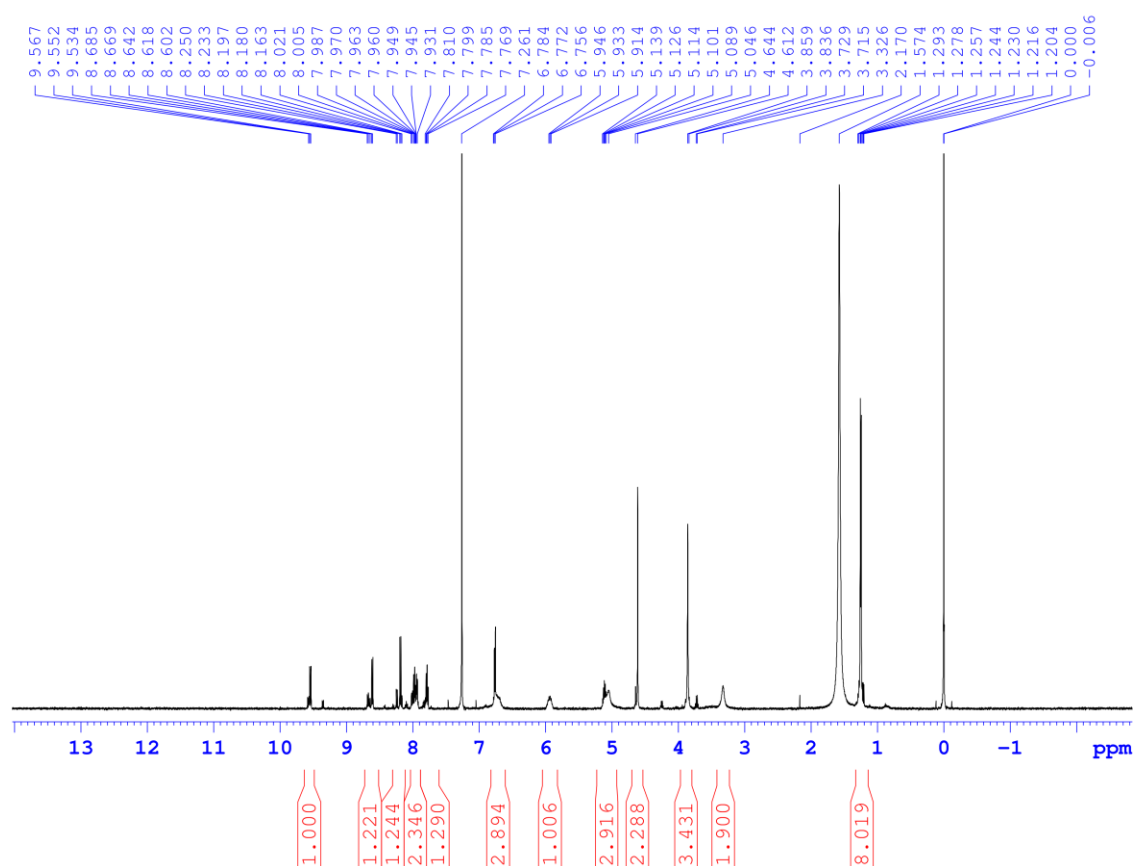


Figure S22 ^1H NMR spectrum of the reaction product between **1b** and Qui-COOH (chloroform- d_1).

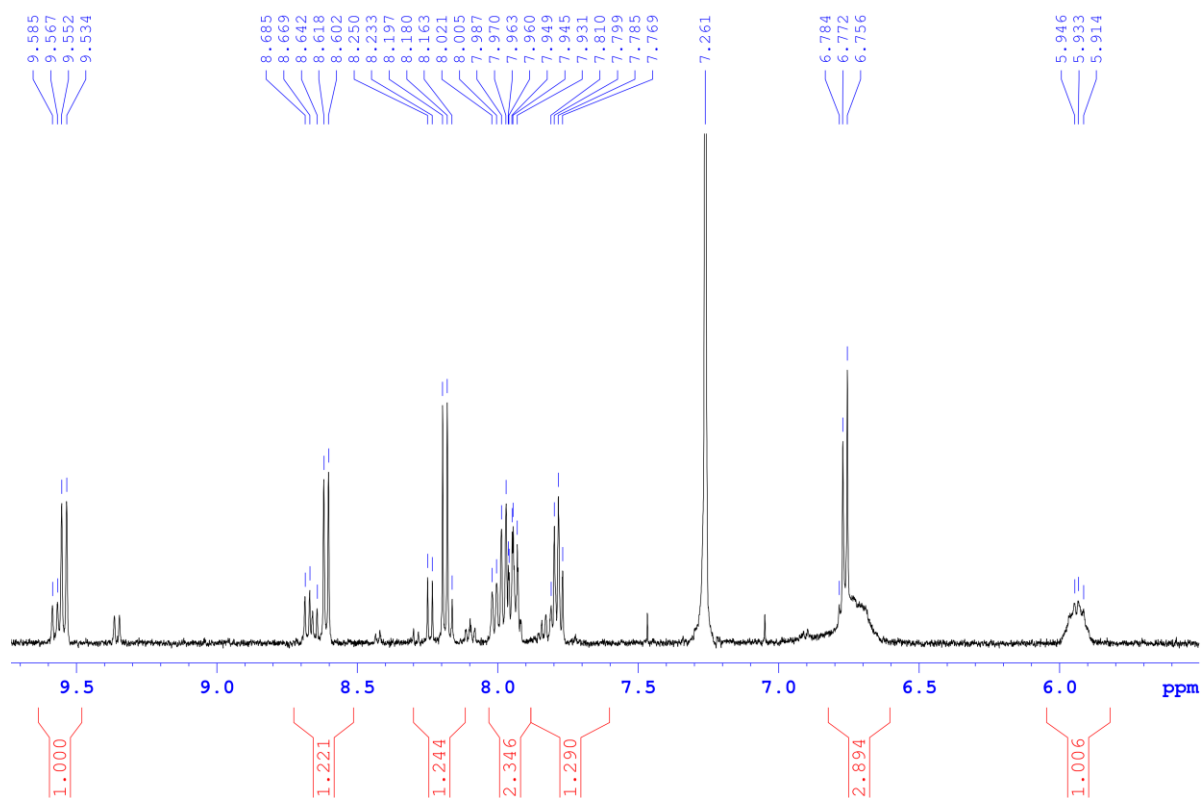


Figure S23 ¹H expanded NMR spectrum of the reaction product between **1b** and Qui-COOH.

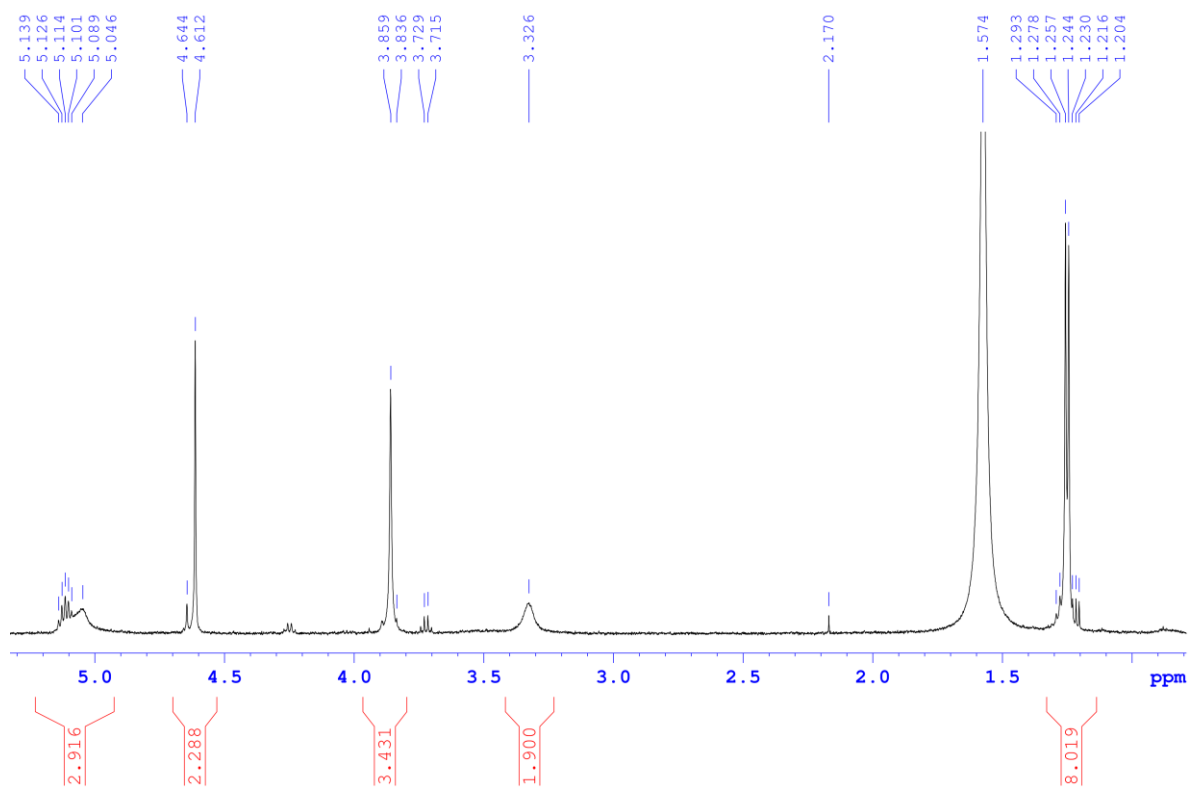


Figure S24 ¹H expanded NMR spectrum of the reaction product between **1b** and Qui-COOH.

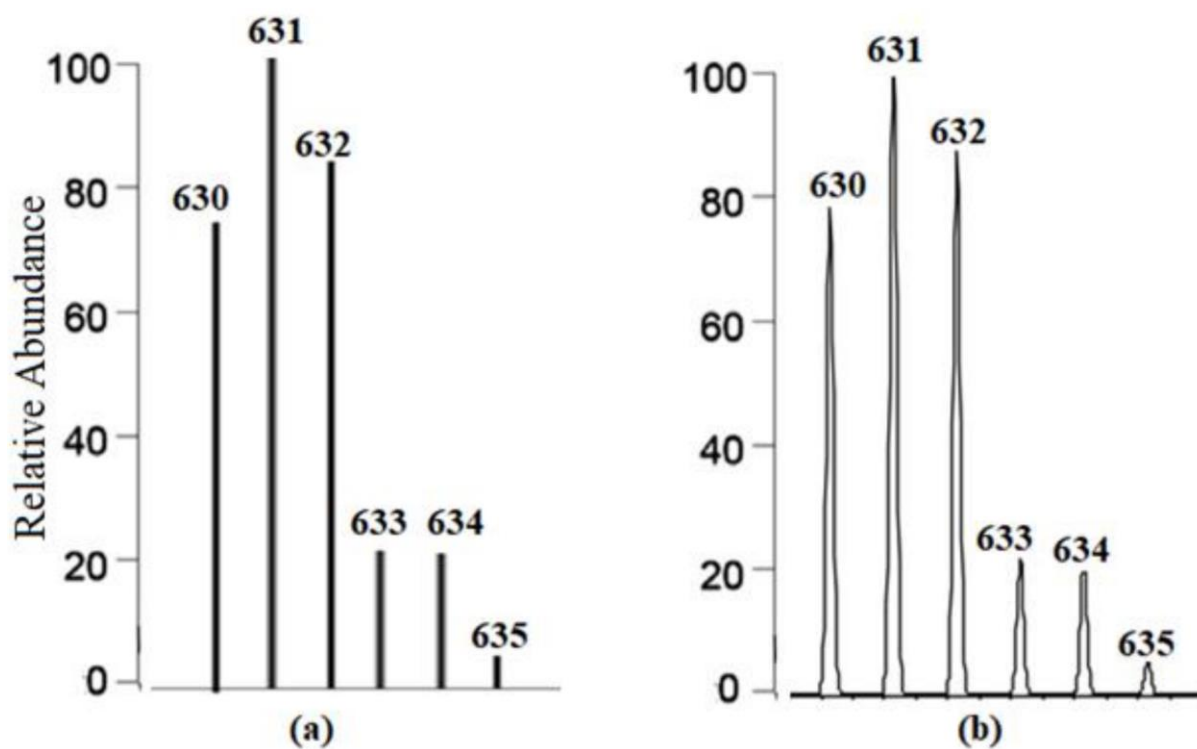


Figure S25 Experimental isotopic pattern obtained by ESI-MS (a) and simulated isotopic pattern for complex fragment $[(6-Cl)^+]$ (b)