

Supporting information

IR spectroscopy data (KBr pellet, cm^{-1}) for (I): 3086 (w), 3012 (w), 2919 (w), 1586 (w), 1560 (s), 1532 (s), 1368 (vs), 1230 (m), 1209 (m), 1173 (s), 812 (m), 789 (m), 765 (m), 743 (m), 647 (m), 489 (w), 460 (m).

Elemental analysis: calculated for $\text{C}_8\text{H}_6\text{N}_4\text{S}_2\text{Pb}$, (I): C 22.37, H 1.41, N 13.04, S 14.93%; found: C 22.19, H 1.49, N 12.41, S 14.10%.

Powder X ray diffraction data for the powder sample of (I) were obtained in a Bruker D8 Advance diffractometer ($K\alpha_1 = 1.5406 \text{ \AA}$) from 5 to 60° in a 2θ angle. Slit: 0.1° ; time: 300 ms/step; step size: 0.01° . See Figure S1.

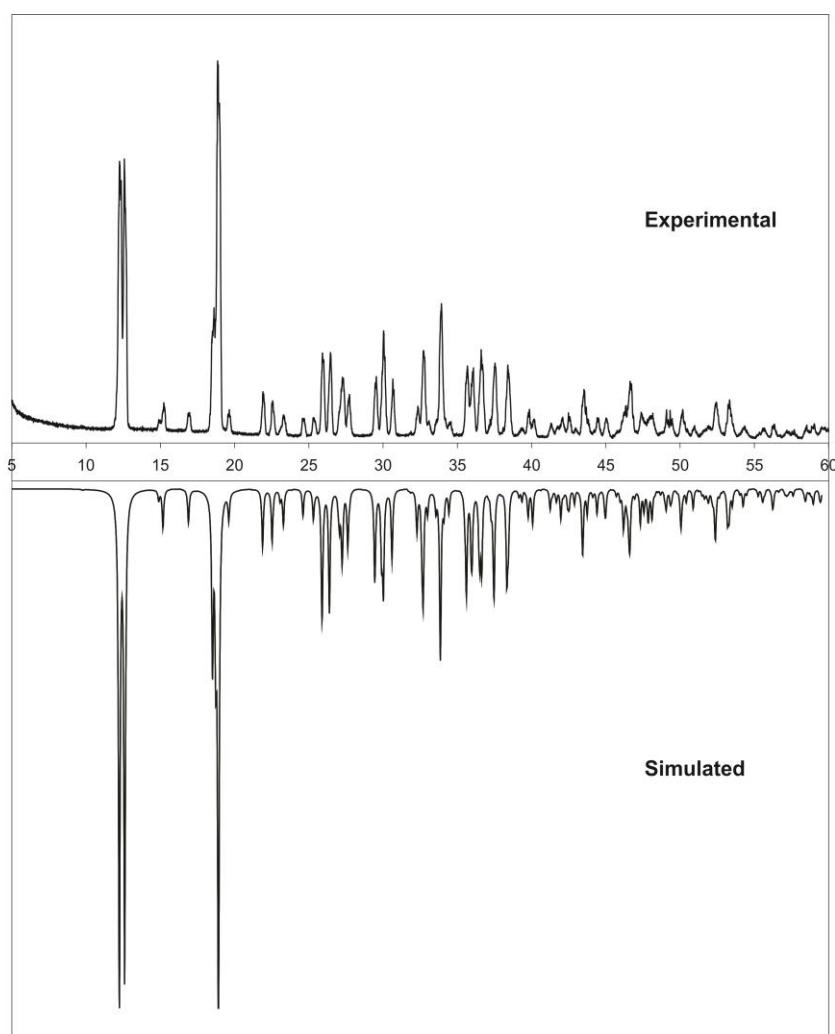


Figure S1 Powder X ray diffraction pattern of (I). The simulated pattern was obtained by PLATON (Spek, 2009).