

IUCrJ

Volume 4 (2017)

Supporting information for article:

Merging single-shot XFEL diffraction data from inorganic nanoparticles: a new approach to size and orientation determination

Xuanxuan Li, Stephan Kassemeyer, John C. H. Spence, Ilme Schlichting, Brenda G. Hogue and Haiguang Liu

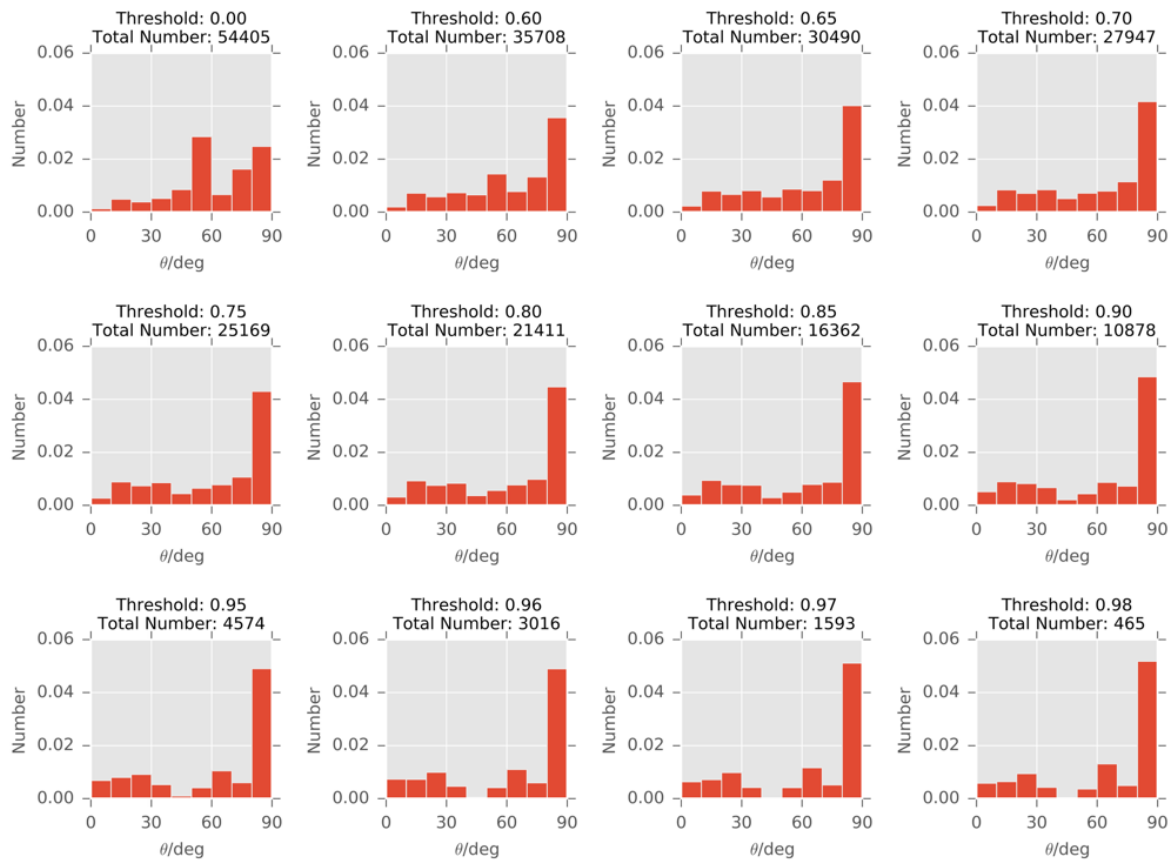


Fig. S1. **Tilting angle distributions at different thresholds.** If we increase the correlation coefficient threshold from 0 to 0.98, the number of patterns decreases rapidly and confidence level increases. The distribution becomes convergent when the threshold is increased to 0.80.

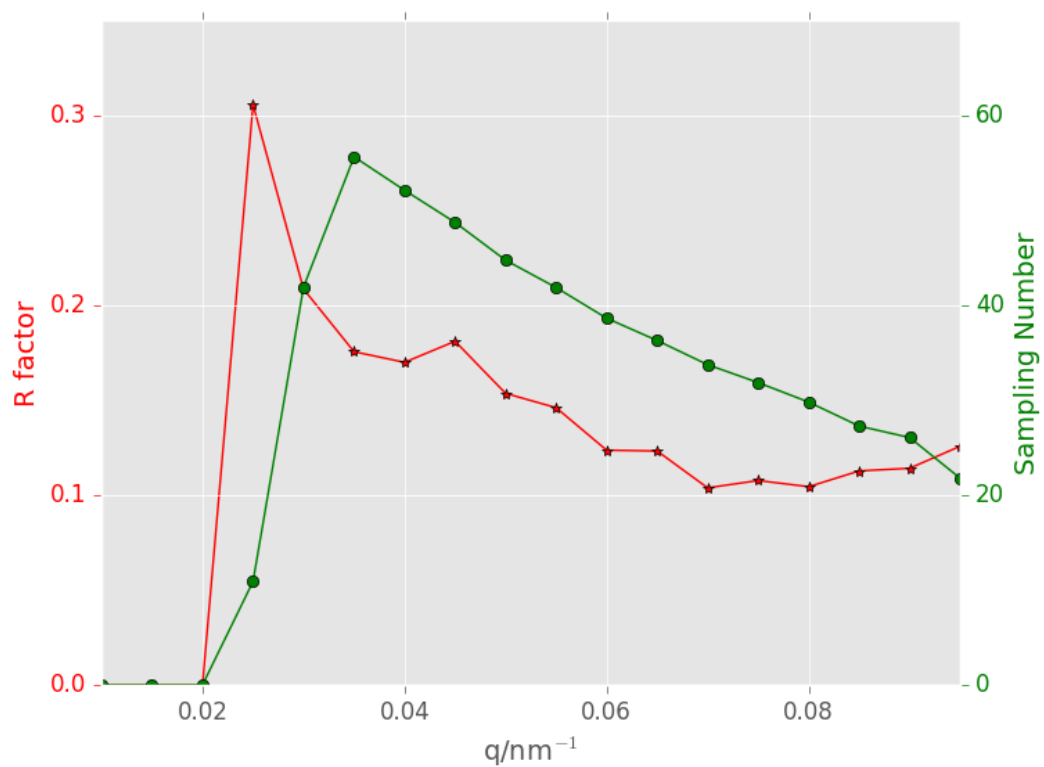


Fig S2. The R-factors between merged intensities from subsets of data. The red curve shows the R-split factors at resolution shells indicated by the q values. The sampling number (green curve) indicates the average number of valid measurements at each resolution shell in reciprocal space.