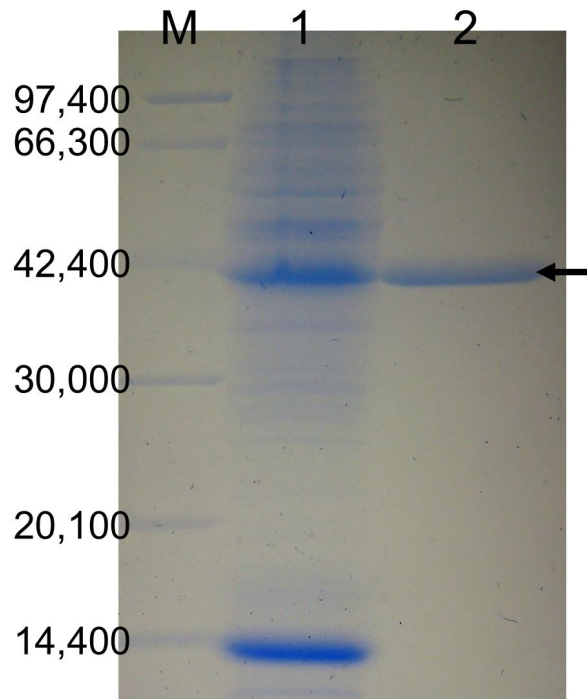


Supplementary Material



Supplementary Figure S1. SDS-PAGE. M, marker; Lane 1, cell extract of *Rhodococcus erythropolis* L88 expressing the *D-threo*-3-hydroxyaspartate dehydratase (D-THA DH) gene; Lane 2, purified recombinant D-THA DH (indicated by the arrow). The marker standards were phosphorylase (97,400 Da), bovine serum albumin (66,300 Da), aldolase (42,400 Da), carbonic anhydrase (30,000 Da), trypsin inhibitor (20,100 Da), and lysozyme (14,400 Da). Proteins were visualized by staining the gel with Coomassie Brilliant Blue R-250 (Wako Pure Chemical) followed by destaining with 40:7:53 (v/v/v) methanol/acetic acid/water.