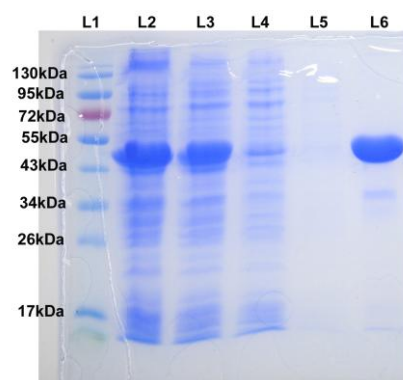


## Supplementary Material



**Supplementary Figure S1.** SDS PAGE of SpDnaJ. The proteins were electrophoresed in 15% polyacrylamide gel. lane 1: Total proteins of induced *E. coli*; lane 2: Supernatant after ultrasonic crash of induced *E. coli*; lane 3: Flow through after Ni-NAT column; lane 4: Eluent washed by 40mmol/L imidazole; lane 6: Eluent washed by 300mmol/L imidazole. The gel was stained by Coomassie blue R-250.