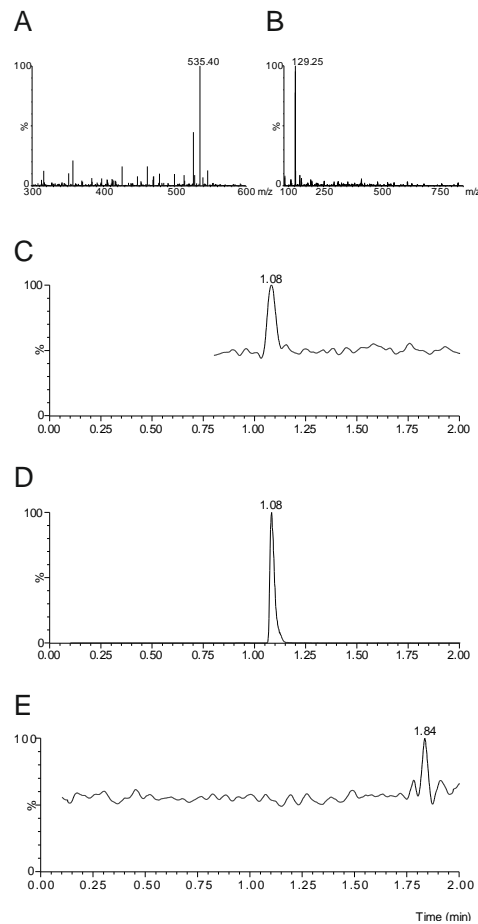


Supplementary Material



Supplementary Figure 1. Detection of peptide Ac-AKAKTDHGAE in co-crystals with MN423 Fab fragment. (A) Mass scan spectra of pure peptide Ac-AKAKTDHGAE ($M_r = 1069$), the peak at 535.4 m/z corresponds to two-times charged peptide ion. (B) Daughter spectra of 535.4 m/z parent ion. (C) Chromatogram of peptide isolated from co-crystal with MN423 Fab fragment. (D) Chromatogram of the pure peptide Ac-AKAKTDHGAE. (E) Negative control – irrelevant crystal soaked in peptide Ac-AKAKTDHGAE solution and processed identically as co-crystal in (C).