

Supplementary material to
**Purification, crystallization and preliminary crystallographic analysis of
the adhesion domain of Epf from *Streptococcus pyogenes***

Christian Linke,^a Nikolai Siemens,^b Martin J. Middleditch,^a Bernd Kreikemeyer,^b
Edward N. Baker^a

^aSchool of Biological Sciences and Maurice Wilkins Centre, University of
Auckland, Private Bag 92019, Auckland 1142, New Zealand,

^bInstitute of Medical Microbiology, Virology and Hygiene, University of Rostock,
Schillingallee 70, 18057 Rostock, Germany

Correspondence e-mail: en.baker@auckland.ac.nz

Table S1

LC-MS/MS analysis of EpfN incubated with chymotrypsin. The expected monoisotopic mass was calculated using the web server <http://db.systemsbio.net:8080/proteomicsToolkit/FragIonServlet.html>. Residue numbers refer to NCBI accession number ZP_00366506.

Observed (<i>m/z</i>)	Charge	Expected (<i>m/z</i>) ^a	$\Delta_{\text{obs-}}^{\text{calc}}$	Sequence	Residues
782.87	+2	782.85	+0.02	AAEAEELPDDL MNF	52-65
577.62	+3	577.61	+0.01	KGTWEVSADGSSGRFF	66-81
537.77	+2	537.76	+0.01	SKGATDSYVF	82-91
496.96	+3	496.96	0	HLIPAKDVKKPGW	92-104
469.28	+3	469.28	0	IKIDKQSI AARY	115-126
495.76	+2	495.75	+0.01	SLIKDHDY	144-151
935.52	+2	935.48	+0.04	KITFEQQIASGITVDY	152-168
470.22	+4	470.23	+0.01	NKTTDDSFKISDESKY	174-190
704.35	+2	704.34	+0.01	ASNVKIEGEEQGF	191-203
479.60	+3	479.58	+0.01	KQREQGDKTISF	204-215
381.20	+2	381.20	0	KEGPMSL	219-225
544.38	+1	544.37	+0.01	SLVLL	224-228
611.34	+3	611.33	+0.01	LSKVEKKPQGDL DVEF	228-243
554.82	+4	554.81	+0.01	KNLKIIDVTNPSQLDKGVAY	244-263
543.33	+2	543.32	+0.01	VGKNVQLTL	264-273
715.39	+3	715.34	+0.05	TLKSDDGRTNFEGDEISLF	272-290
709.39	+2	709.39	0	NSRGELLQTVTVT	291-303
705.72	+3	705.70	+0.02	KDQQNPISITLSEDQAKSL	304-322
493.60	+3	493.60	0	FFEVGIDPKVEAK	345-357

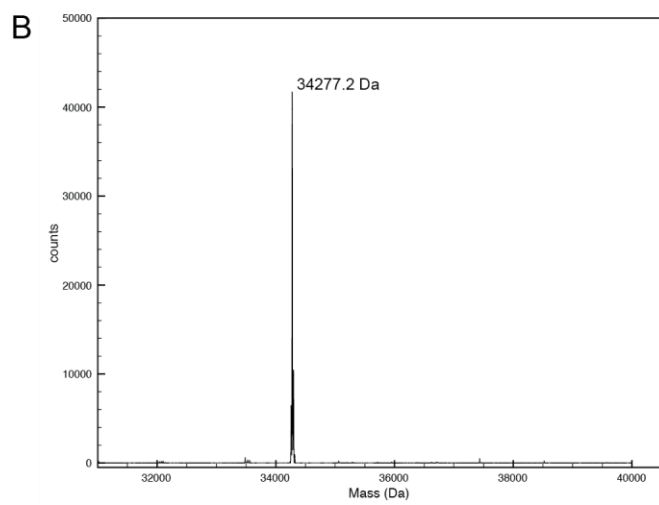
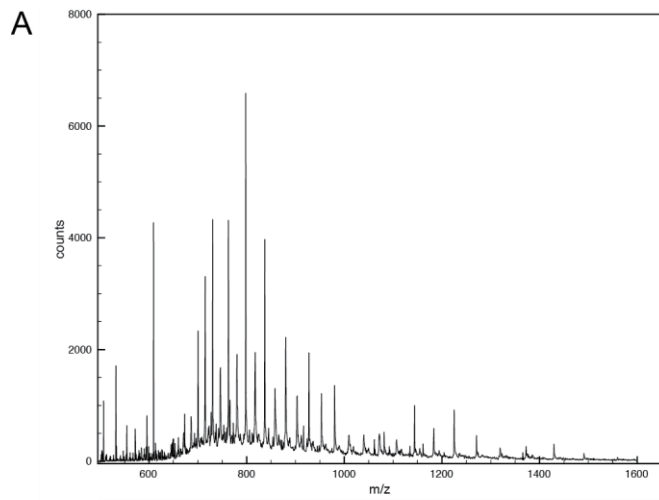


Figure S1. ESI-TOF mass spectrometry analysis of EpfN incubated with chymotrypsin. (A) Raw data showing the multiply-charged spectrum. (B) Deconvoluted molecular weight profile.