



JOURNAL OF
SYNCHROTRON
RADIATION

Volume 27 (2020)

Supporting information for article:

Fast diffraction enhanced imaging using continuous sample rotation and analyzer crystal scanning

Akio Yoneyama, Thet Thet Lwin and Masahide Kawamoto

We have observed another biological sample under the same conditions of Fig. 3. Fig. S1 shows a three-dimensional image and sectional image of a mouse kidney. In spite of the 1 hr measurement period, fine structures of the kidney such as the renal pelvis, cortex, medulla, and blood vessels were clearly visualized. In addition, a large glomerulus of about 50–100 μm diameter was also observed similar to that obtained using crystal X-ray interferometry (Yoneyama *et al.*, 2008).

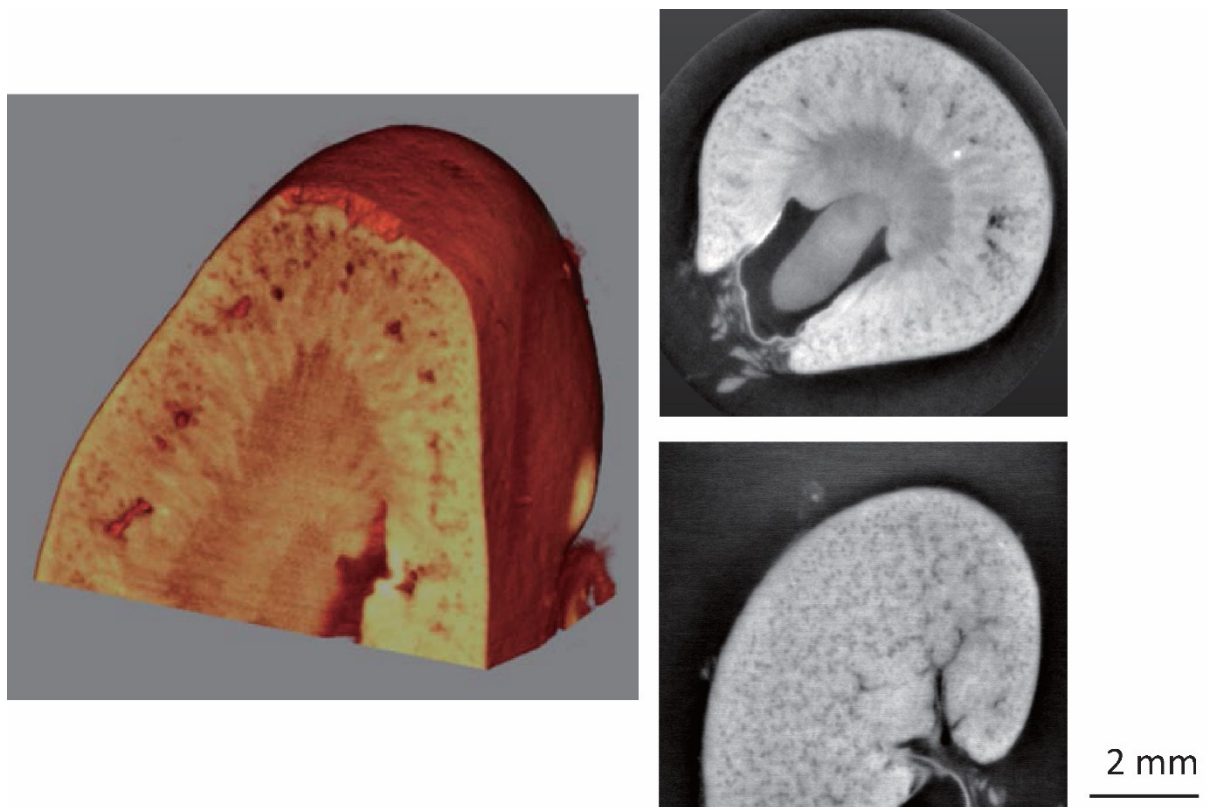


Figure S1 Three-dimensional image and sectional image of a mouse kidney. Fine structures inside the kidney such as the renal pelvis, cortex, medulla, and blood vessels were clearly visualized.