



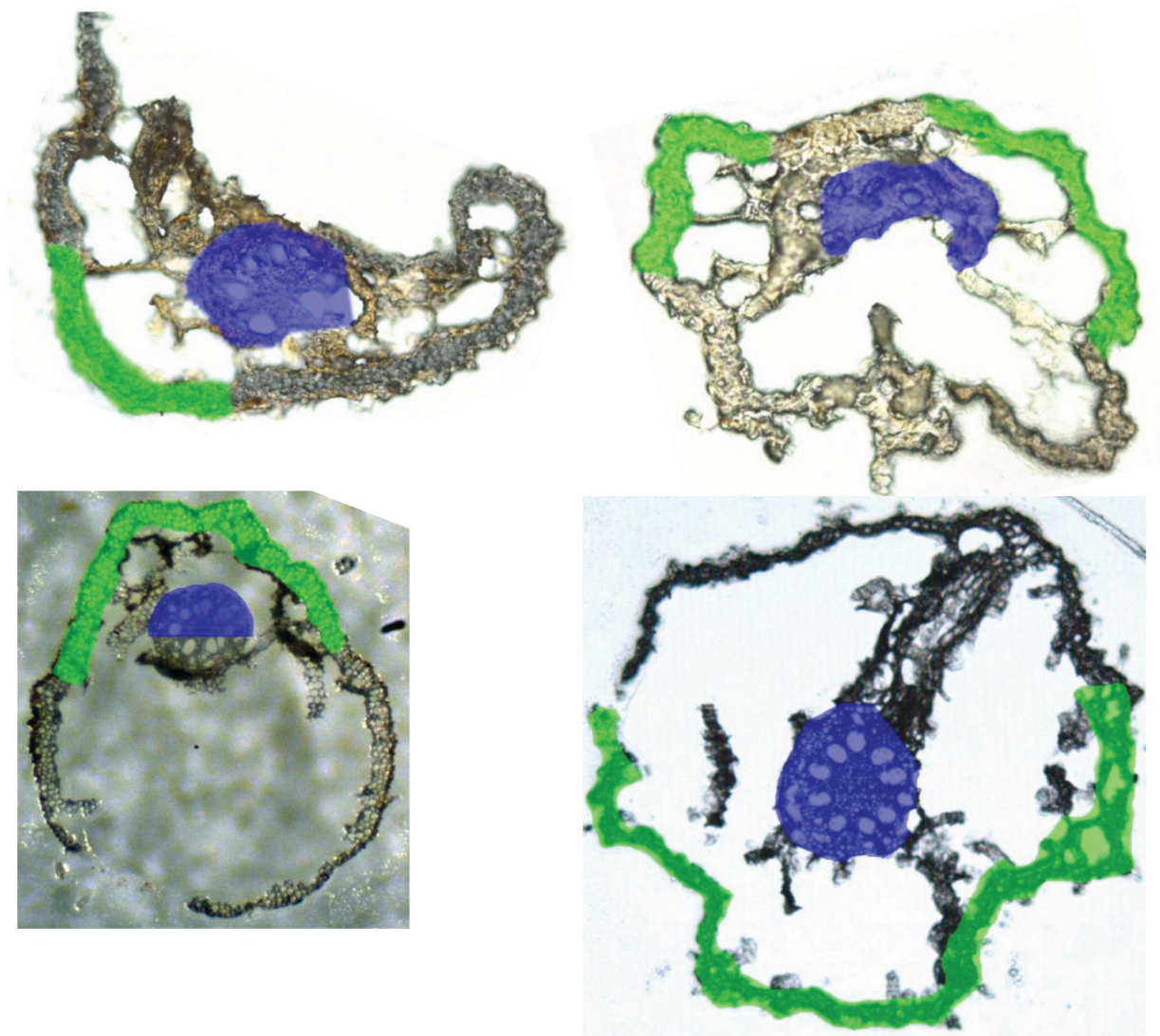
JOURNAL OF  
SYNCHROTRON  
RADIATION

**Volume 22 (2015)**

**Supporting information for article:**

**Synchrotron Study of Metal Localization in *Typha latifolia* L. Root Sections**

**Yu Qian, Huan Feng, Frank J. Gallagher, Qingzhi Zhu, Meiyin Wu, Chang-Jun Liu, Keith W. Jones and Ryan V. Tappero**



Supplemental Material 1: root tissue groups separation based on the optical images of root samples from the four root section samples. Green: dermal tissues; Blue: Endodermis surrounded vascular bundles.