



JOURNAL OF
APPLIED
CRYSTALLOGRAPHY

Volume 57 (2024)

Supporting information for article:

Bragg Spot Finder (BSF): a new machine learning aided approach to deal with spot finding for rapidly filtering diffraction pattern images

Jianxiang, Zhaozheng, Dale, Herbert J. and Jean

The qualitative examples in Fig. 6 are very detailed. In order to improve the clarity of that figure, we present each corner of the figure as a full page image, with the top left corner, BSD image `bsd_000010_301`, processed with BSF in Fig. S1, the top right corner, BSD image `bsd_000010_301` processed with Dozor in Fig. S2, bottom left corner, BSD image `bsd_000023_18`, processed with BSF in Fig. S3, the bottom right corner, BSD image `bsd_000023_18` processed with Dozor in Fig. S4.

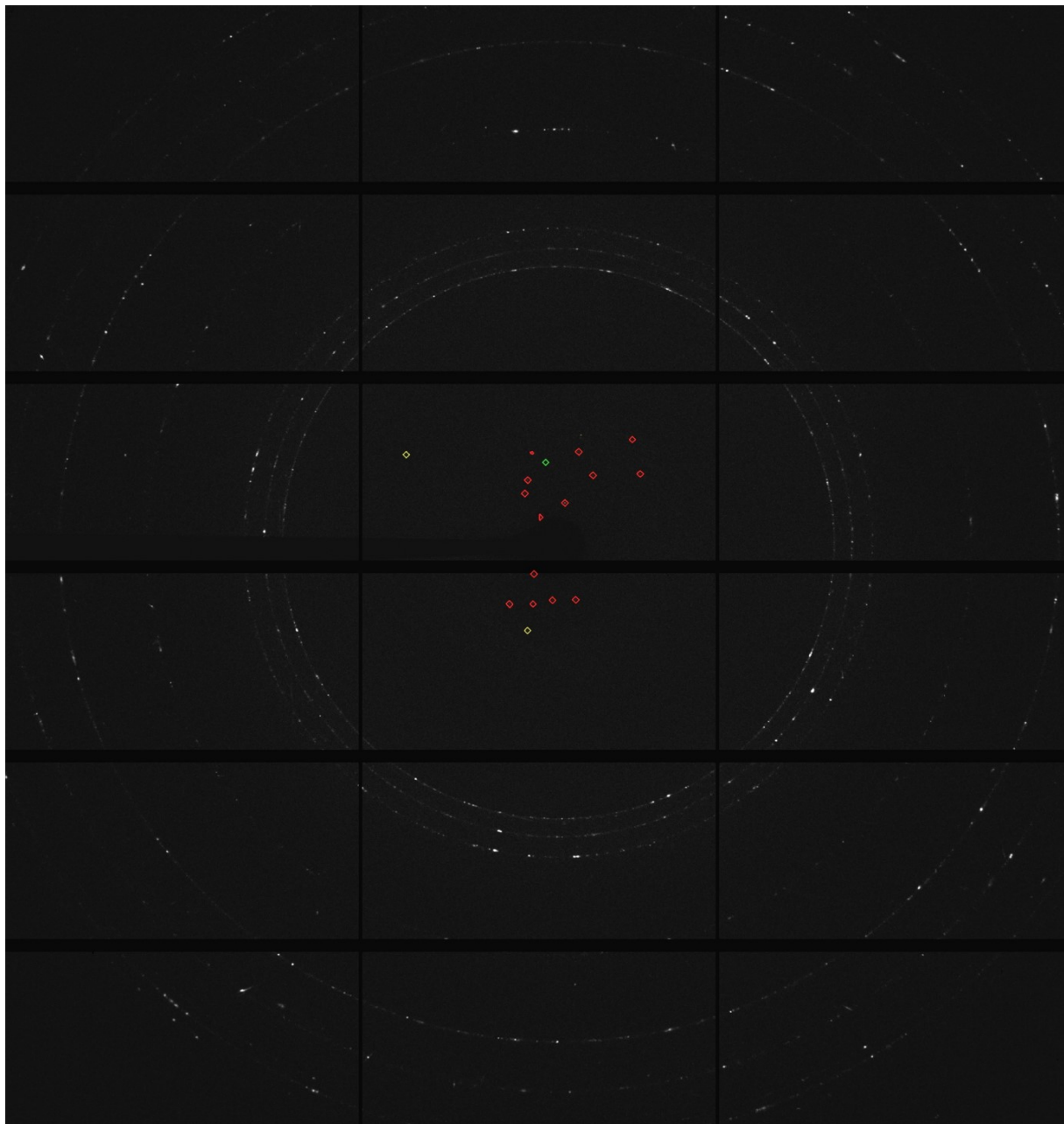


Figure S1 Full resolution image of `bsd_000010_301.cbf` processed by BSF, top left corner of Fig. 6.

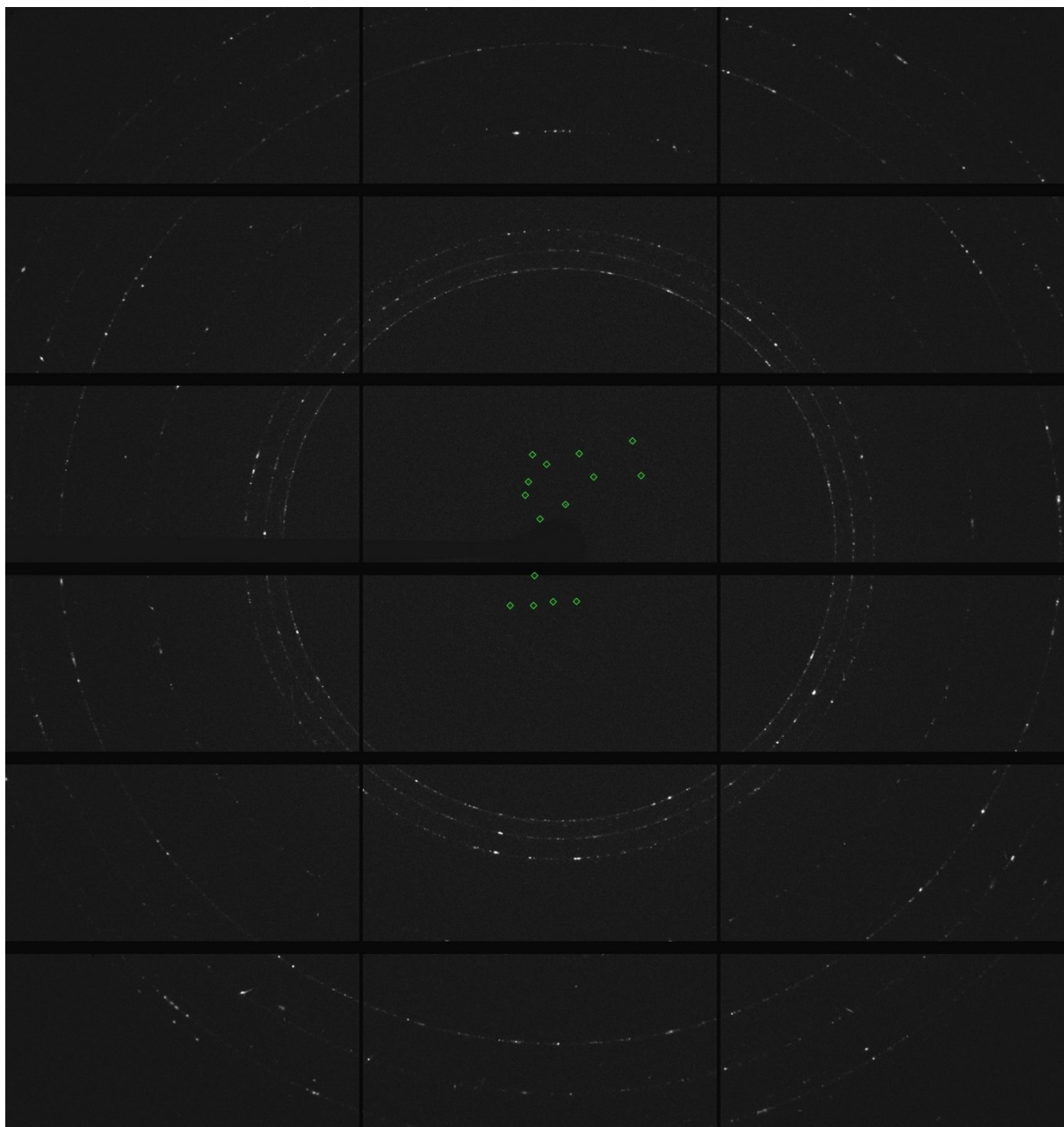


Figure S2 Full resolution image of bsd_000010_301.cbf processed by dozor, top right corner of Fig. 6.

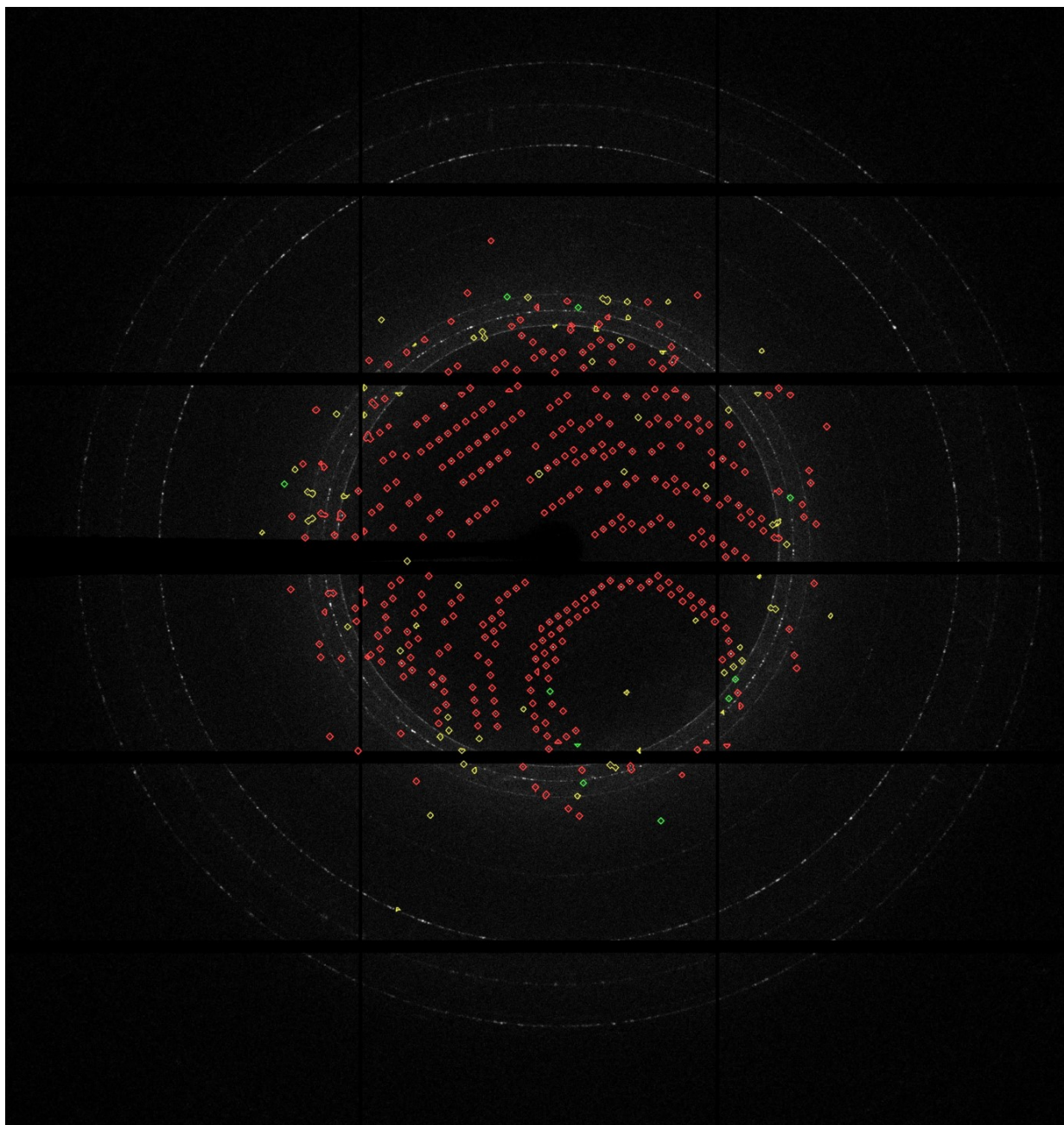


Figure S3 Full resolution image of `bsd_000023_18.cbf` processed by BSF, bottom left corner of Fig. 6.

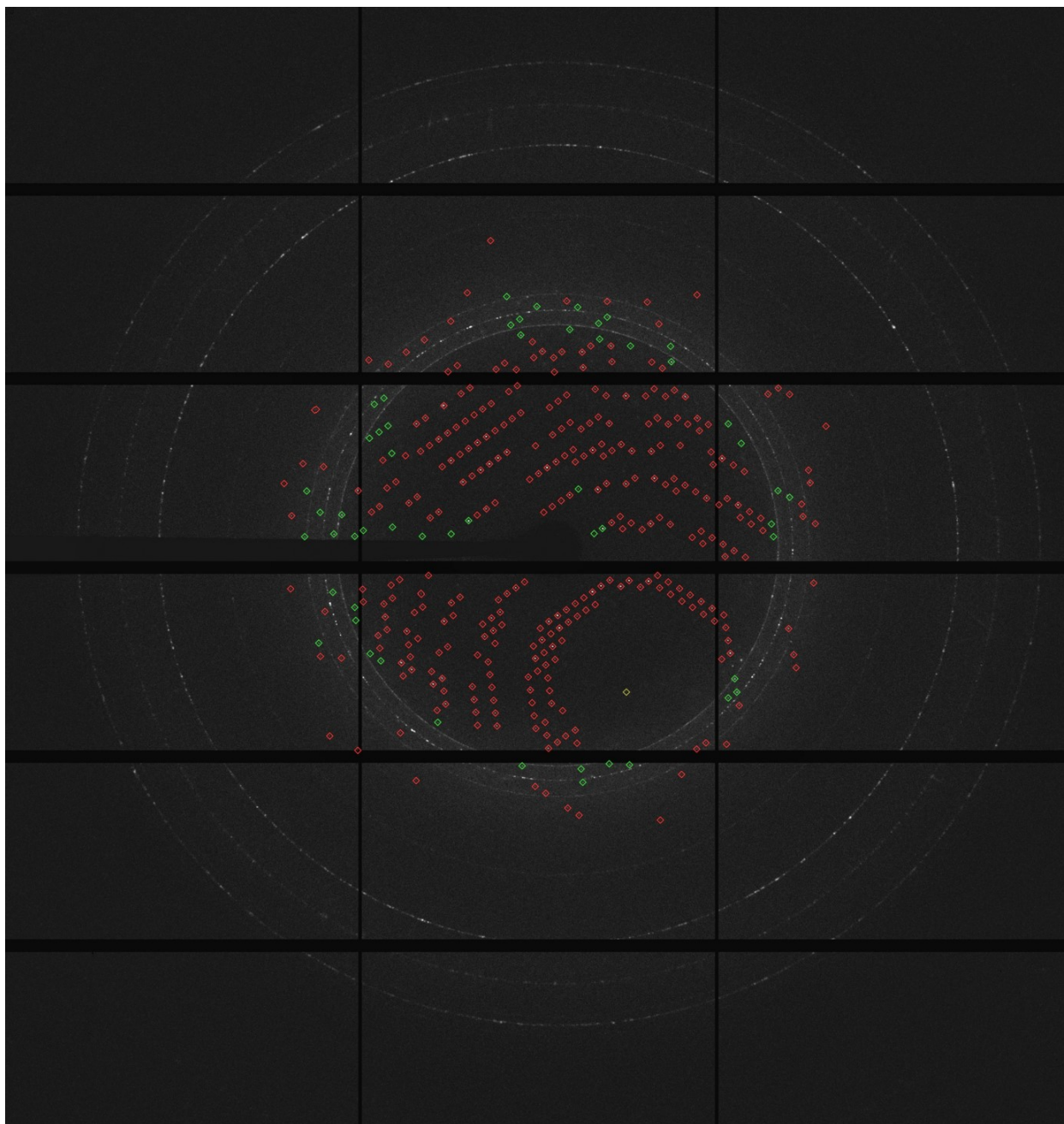


Figure S4 Full resolution image of `bsd_000023_18.cbf` processed by `dozor`, bottom right corner of Fig. 6.