



JOURNAL OF
APPLIED
CRYSTALLOGRAPHY

Volume 57 (2024)

Supporting information for article:

Study of the epitaxy between ϵ -Fe₂O₃, hematite and spinel in brown-glazed Chinese ceramics using electron diffraction mapping techniques

Clément Holé, Magali Brunet, Sébastien Joulié, Zhao Ren, Tian Wang, Gilles Wallez and Philippe Sciau

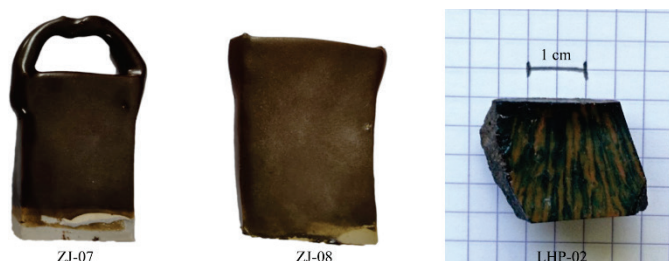
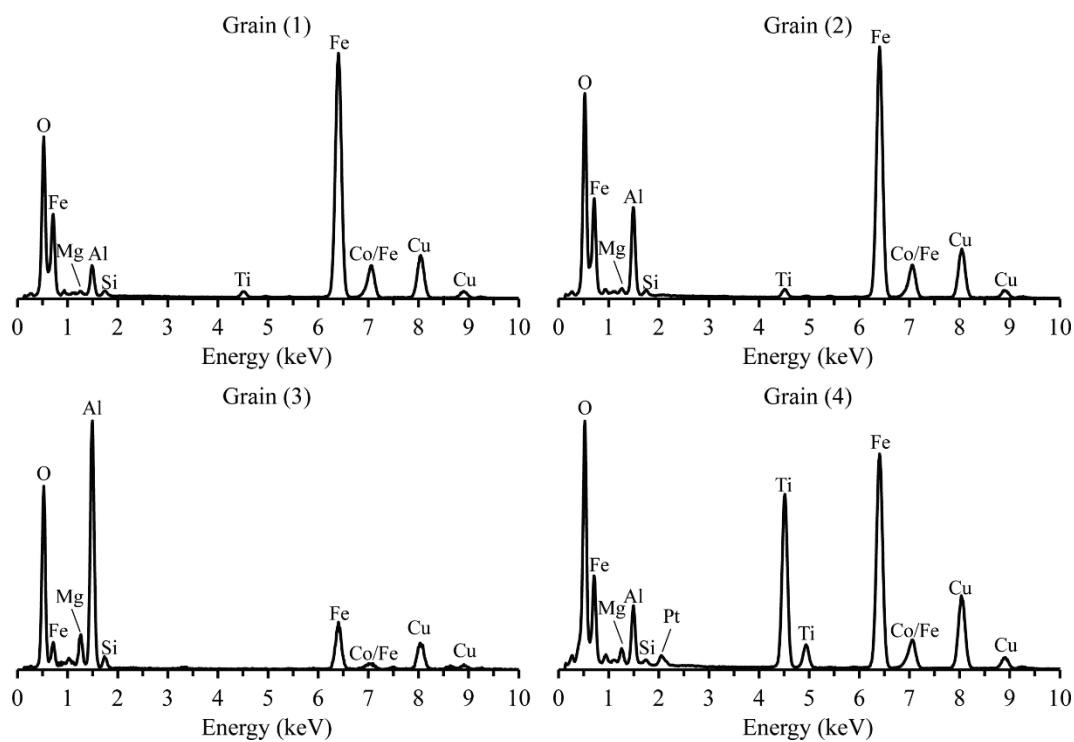
Figure S1 Photographs of samples ZJ-07 (left), ZJ-08 (middle) and LHP-02 (right)**Figure S2** EDS spectra recorded on the grains labelled (1) to (4) from Figure 2. They have been identified respectively as hematite (1), ϵ - Fe_2O_3 (2), spinel (3) and pseudobrookite (4).

Figure S3 Diffraction pattern recorded at the surface of ZJ-07 and associated Pawley refinement (Rwp = 1,774).

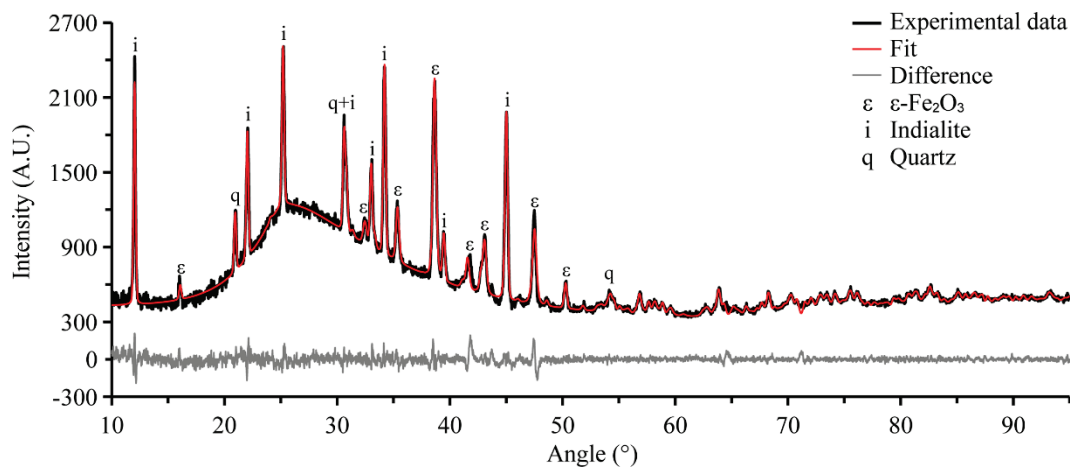


Figure S4 TEM image of a lamella cut perpendicularly to secondary branches of LHP-02 with corresponding TKD phase and orientation maps in Euler angle (the surface of the sample is to the top of the pictures).

