



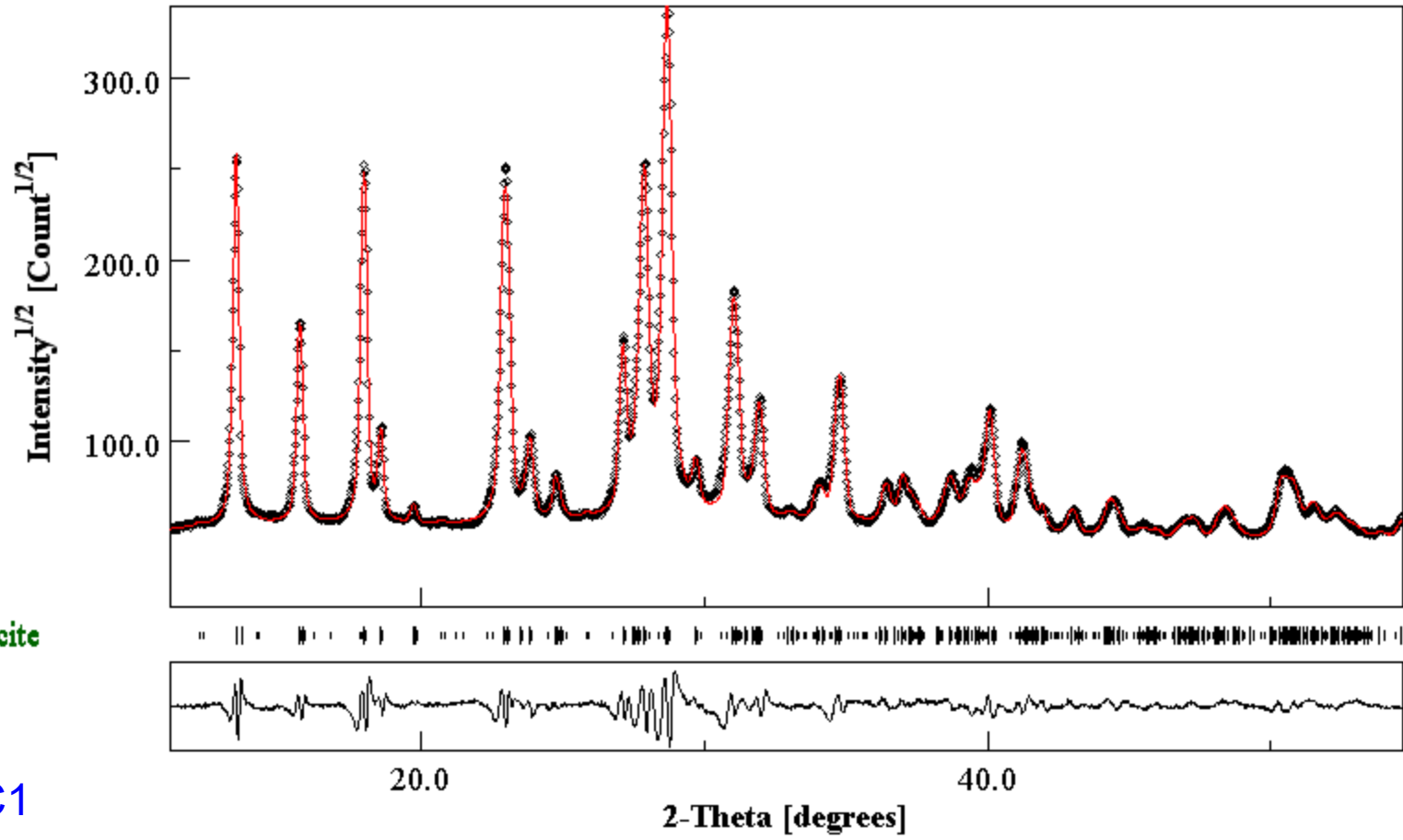
JOURNAL OF
APPLIED
CRYSTALLOGRAPHY

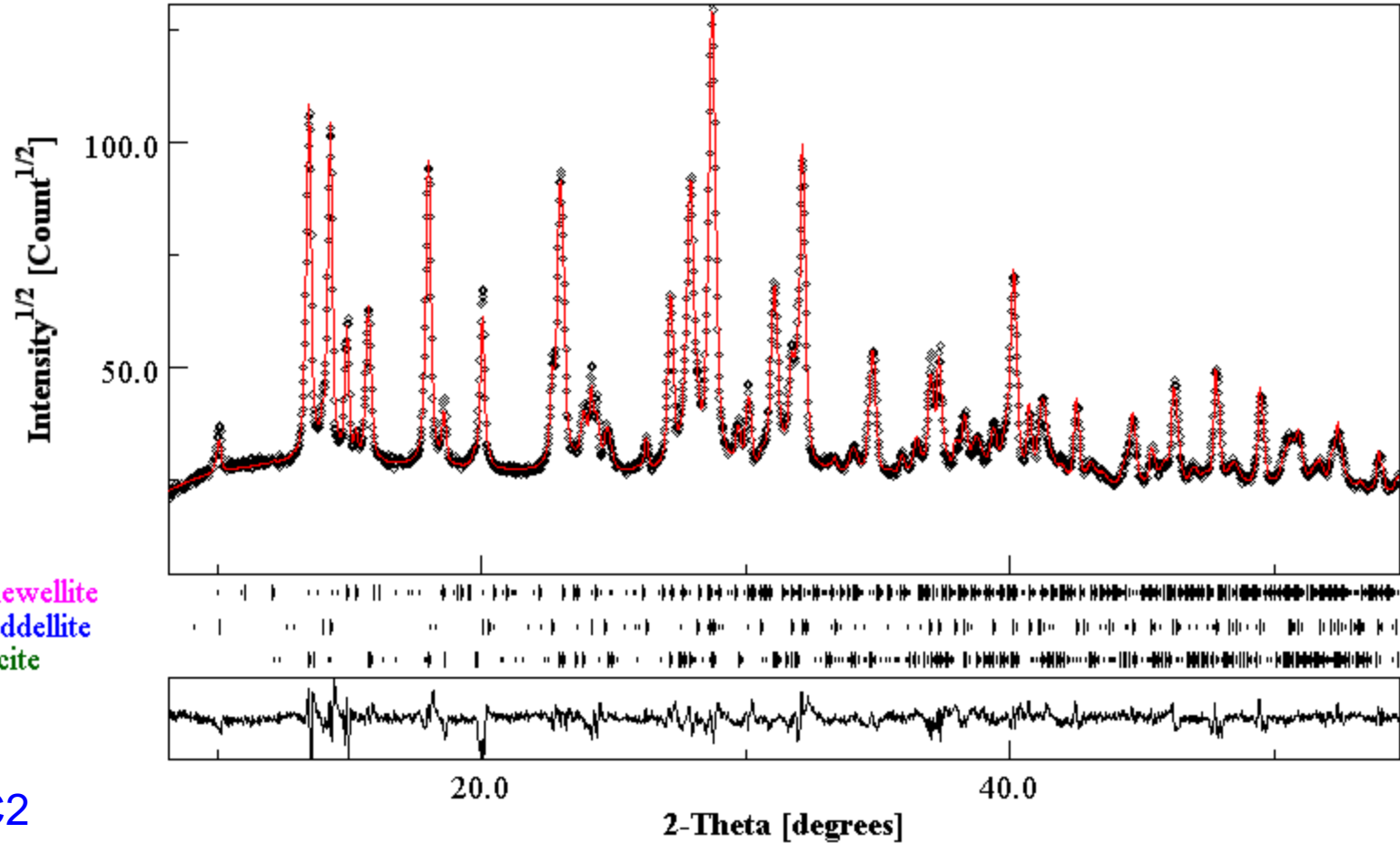
Volume 55 (2022)

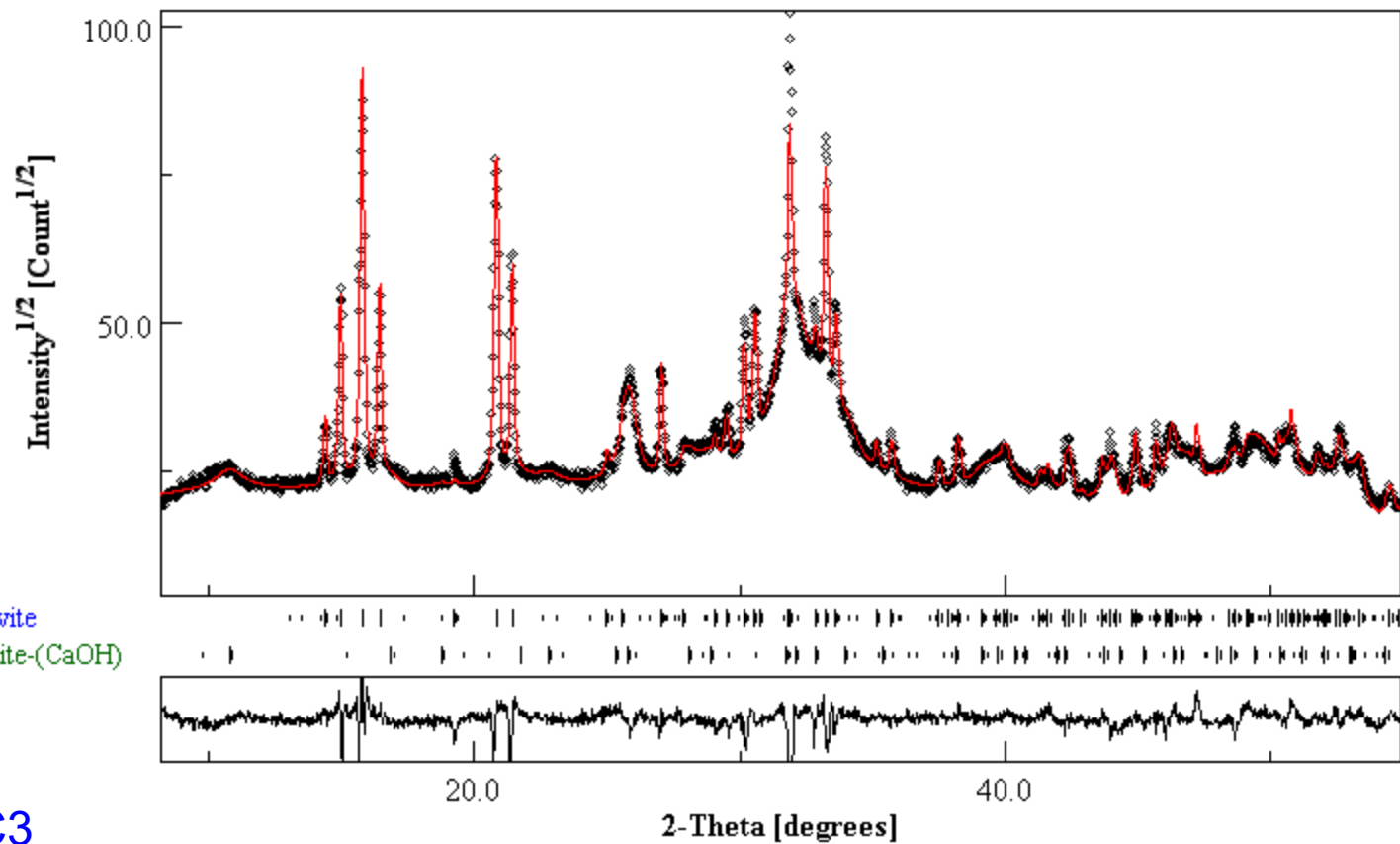
Supporting information for article:

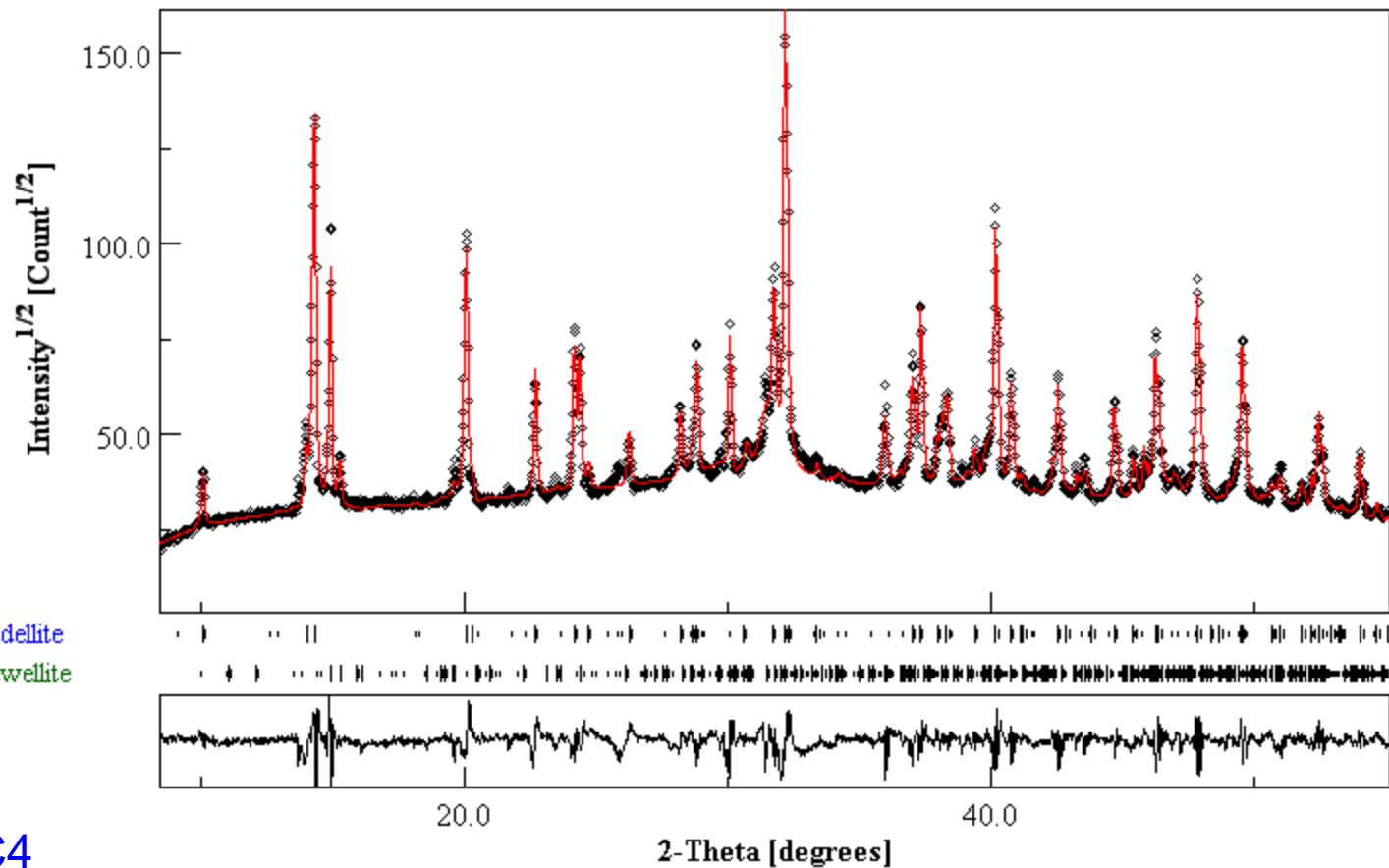
Quantitative phase analysis and microstructural characterization of urinary tract calculi with X-ray diffraction Rietveld analysis on a Caribbean island

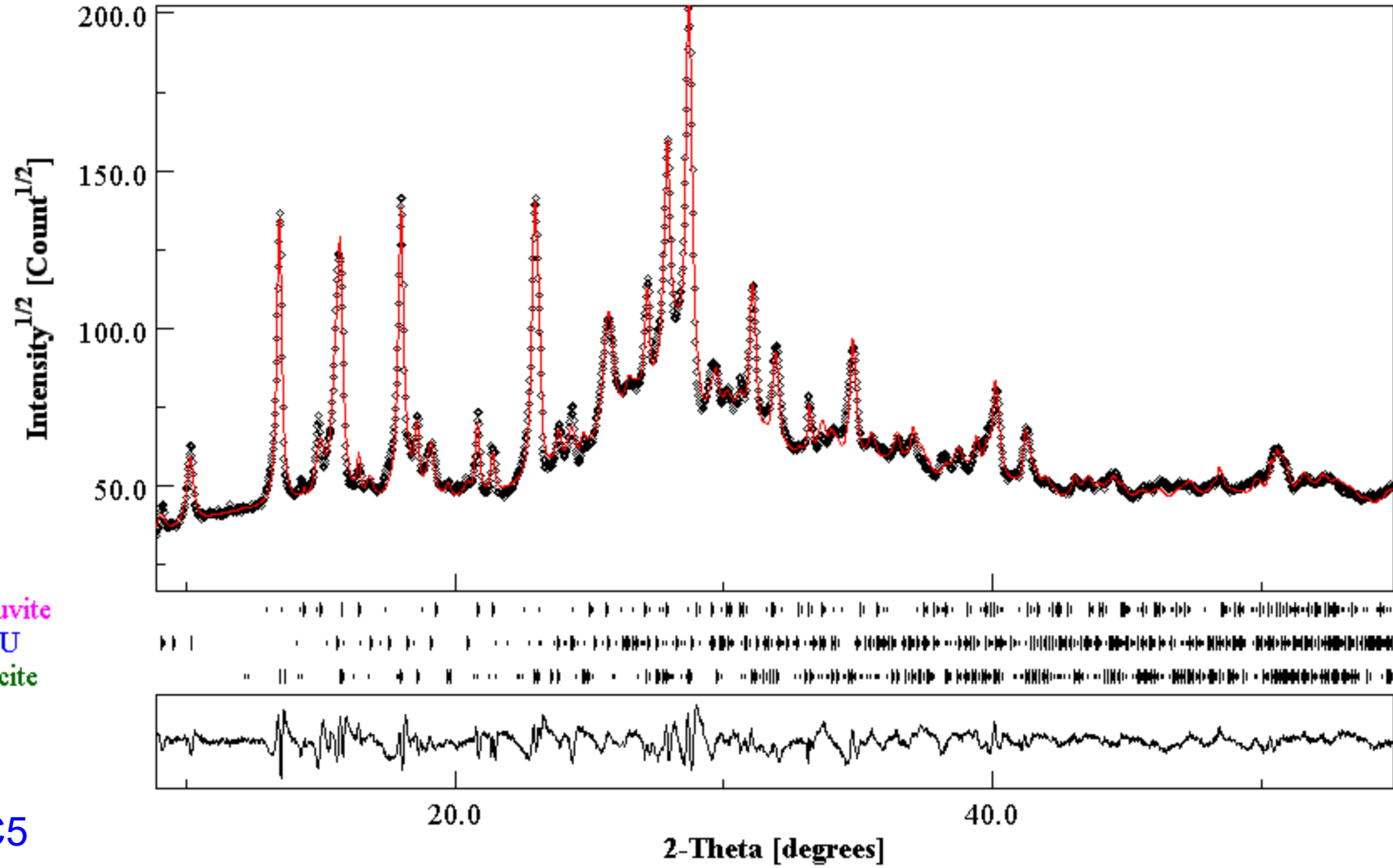
Jaimie Greasley, Shivan Goolcharan and Roger Andrews

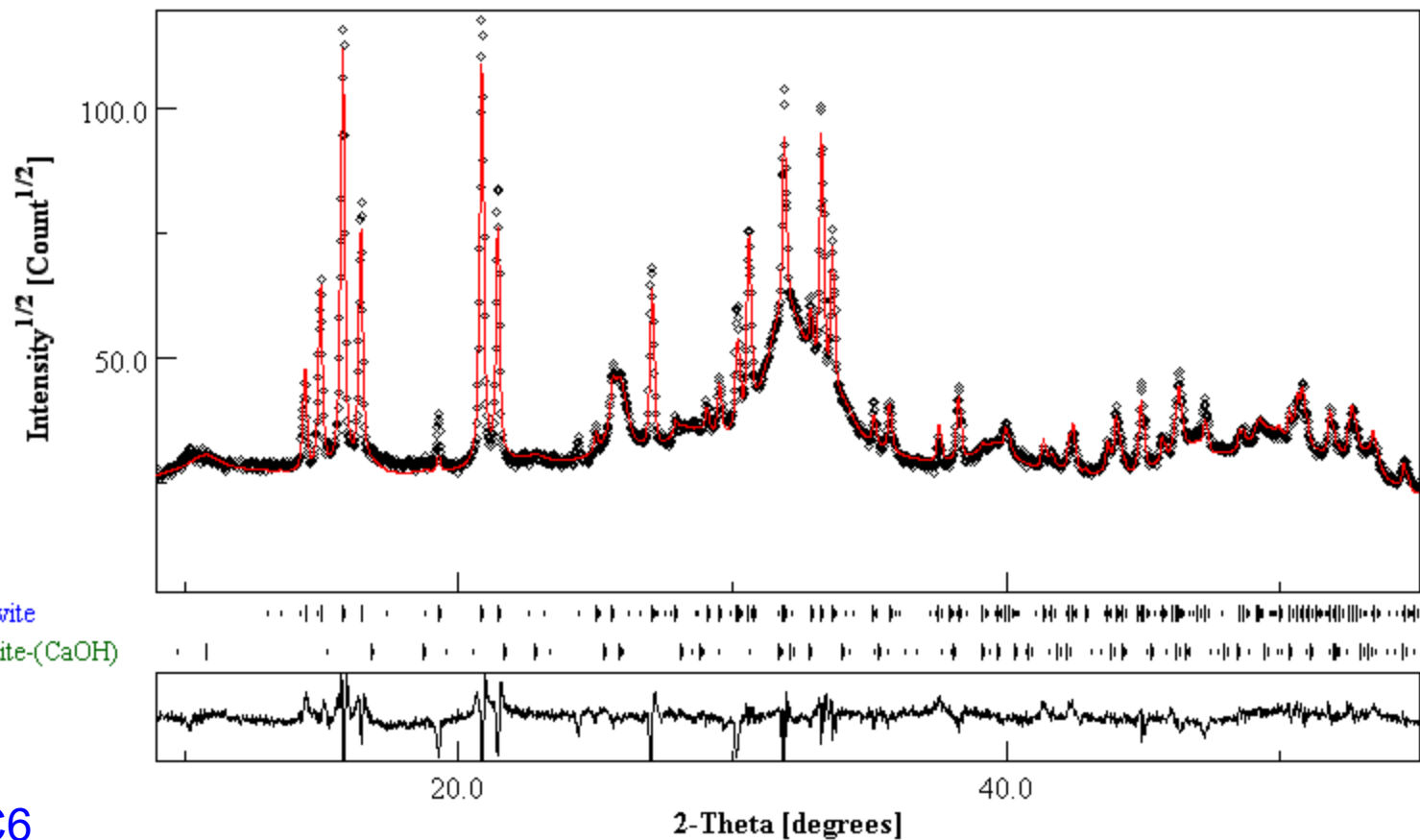




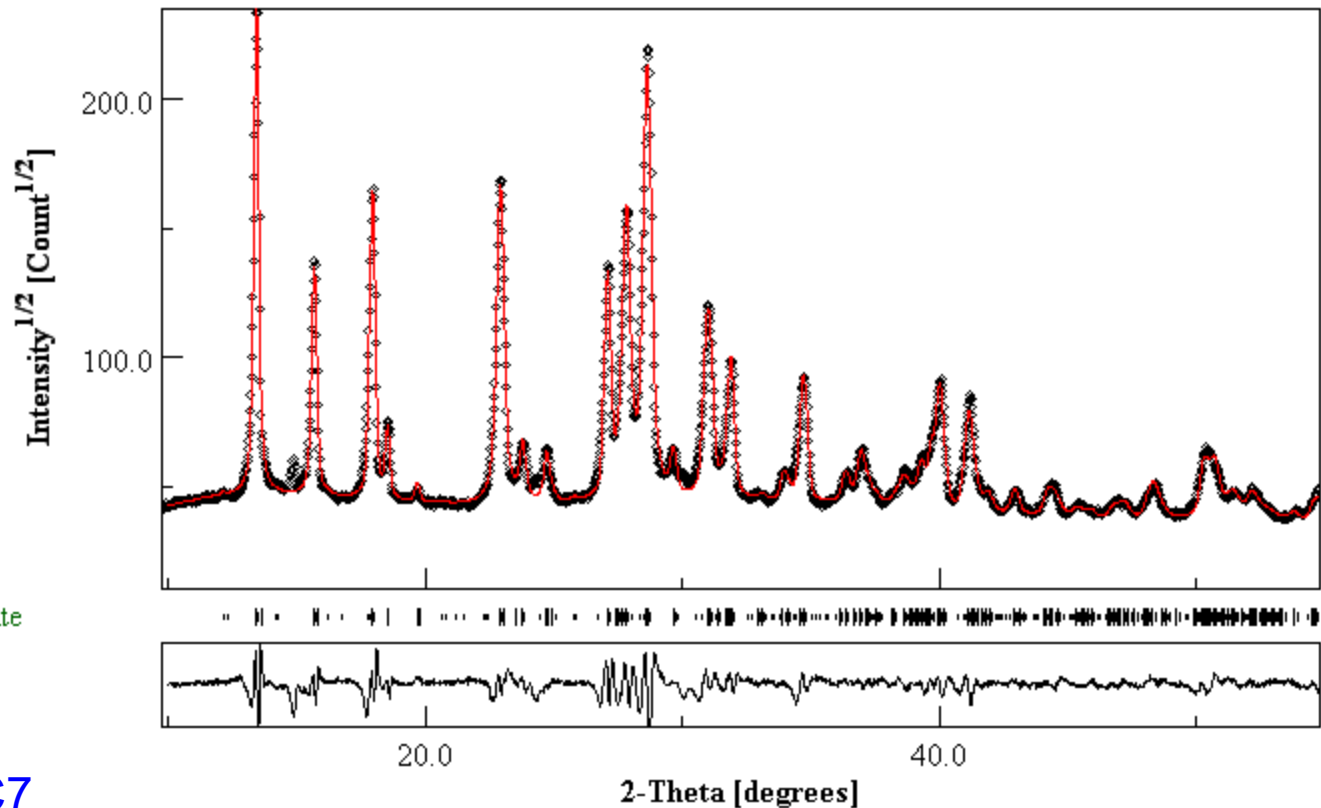


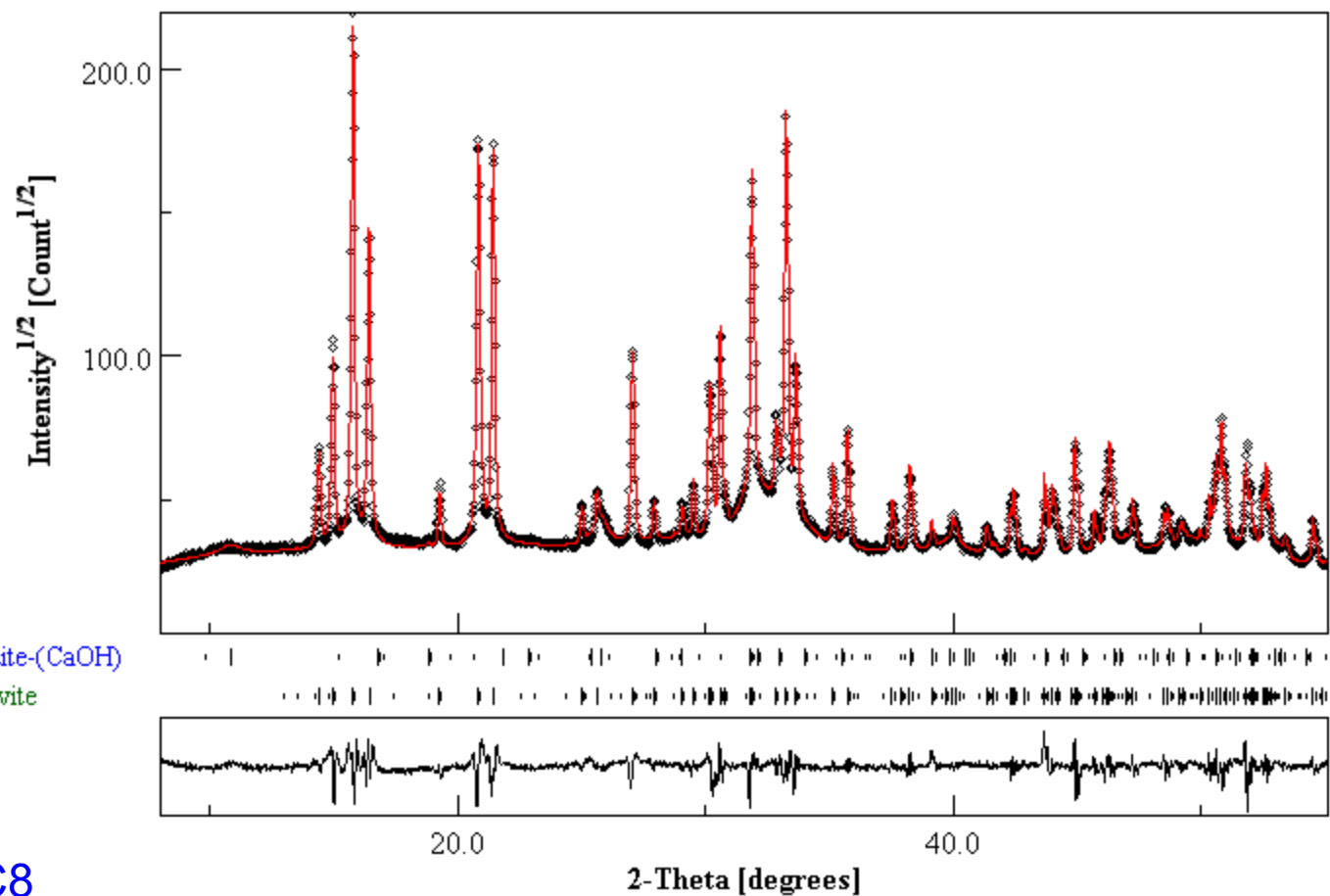




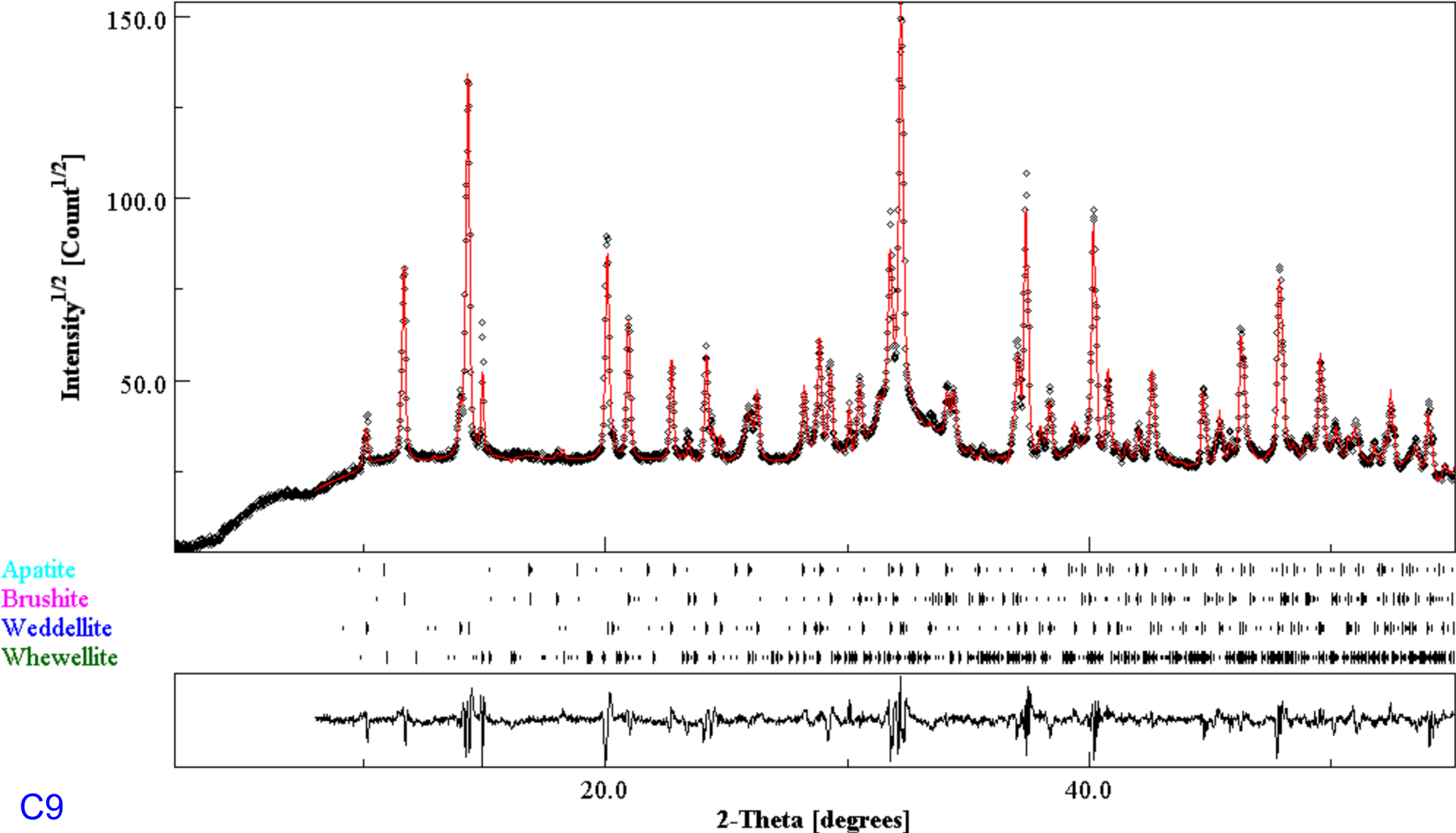


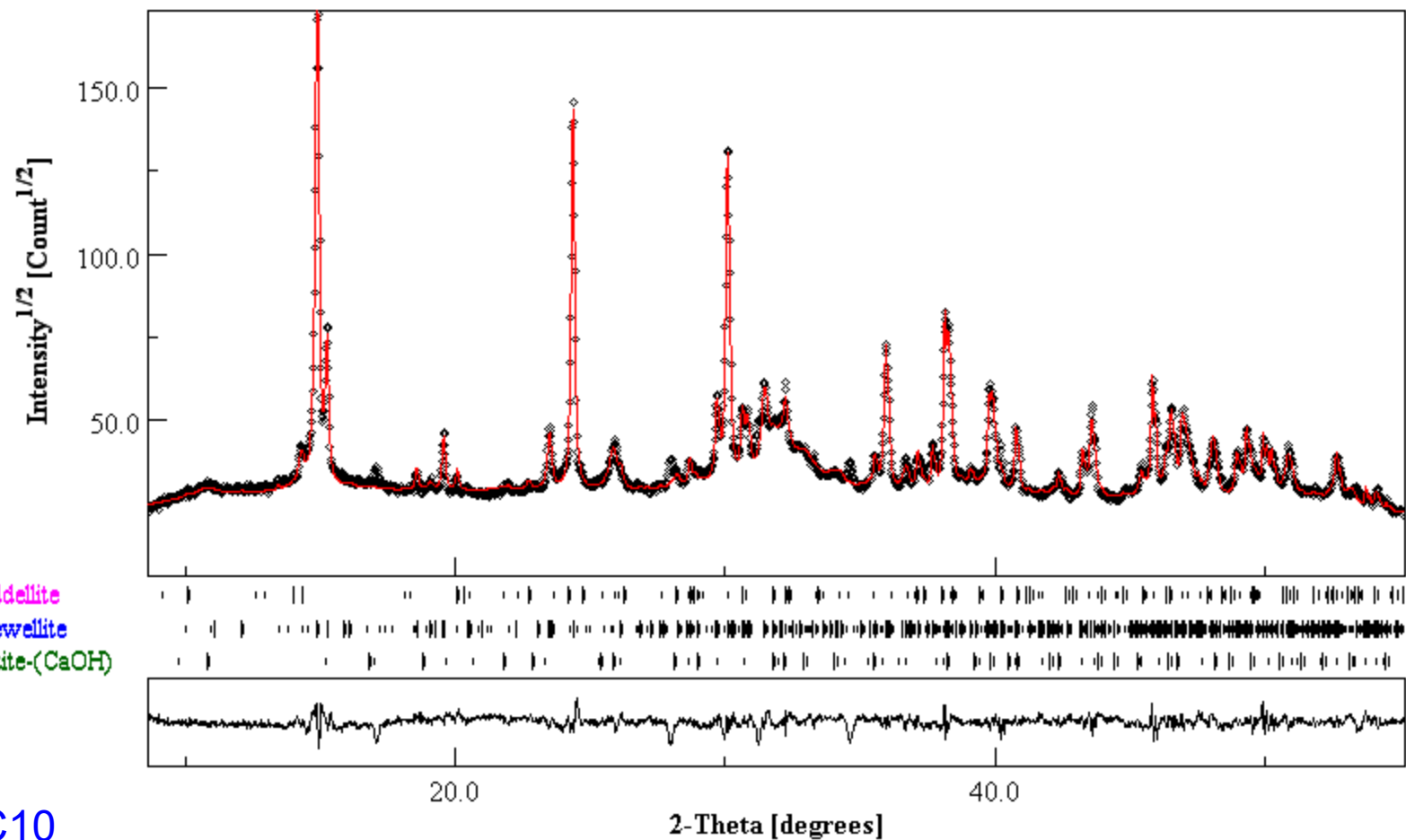
C6

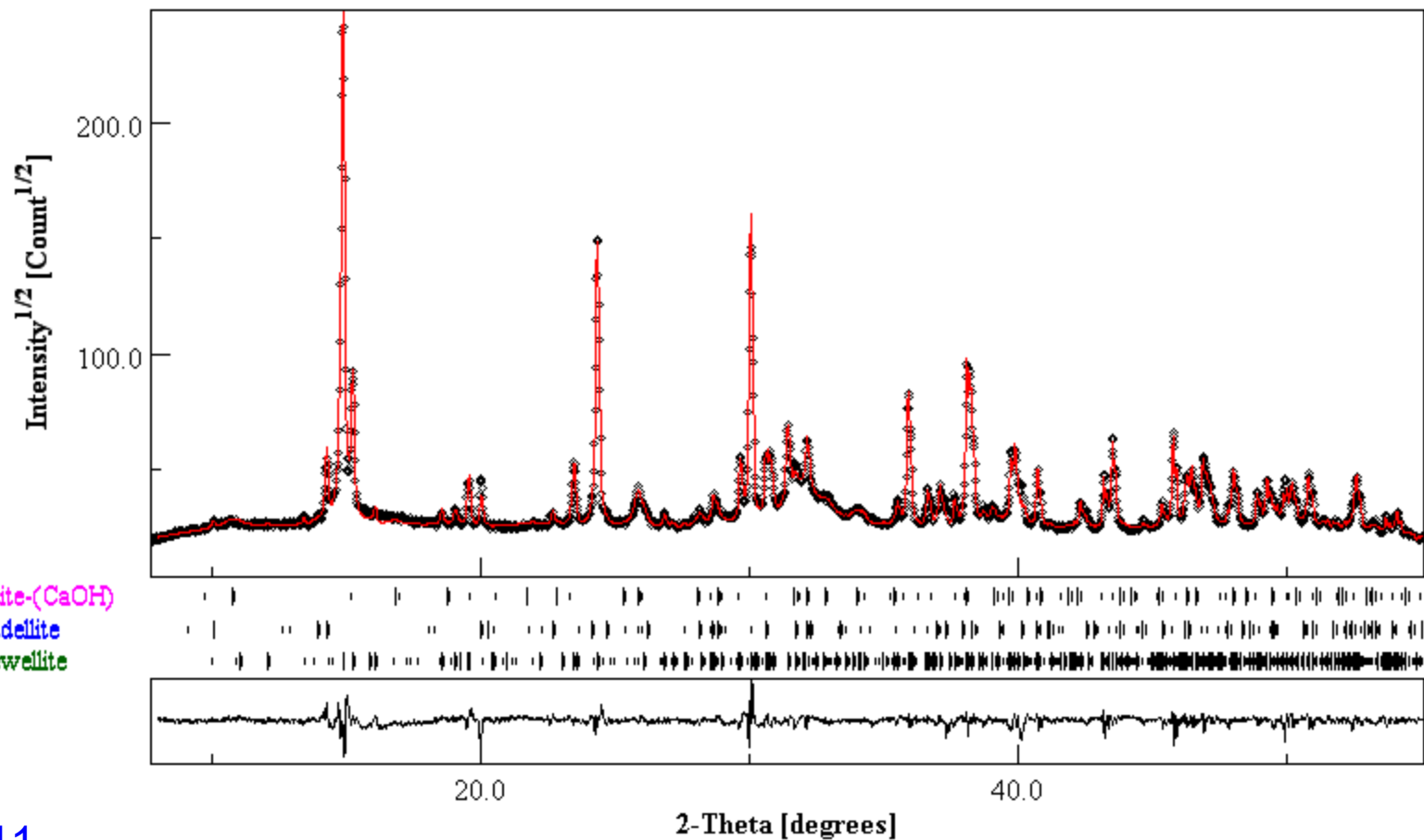


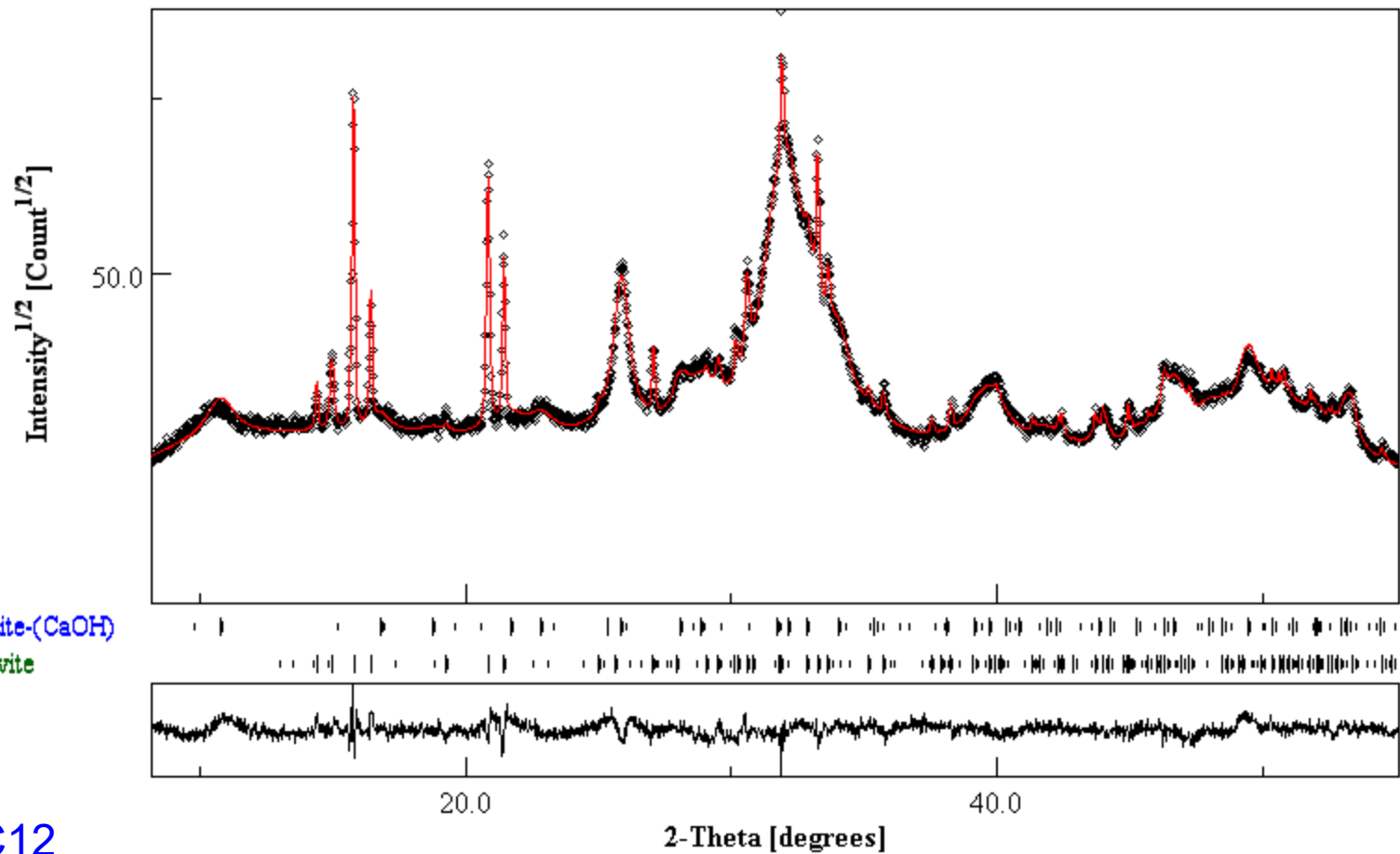


C8

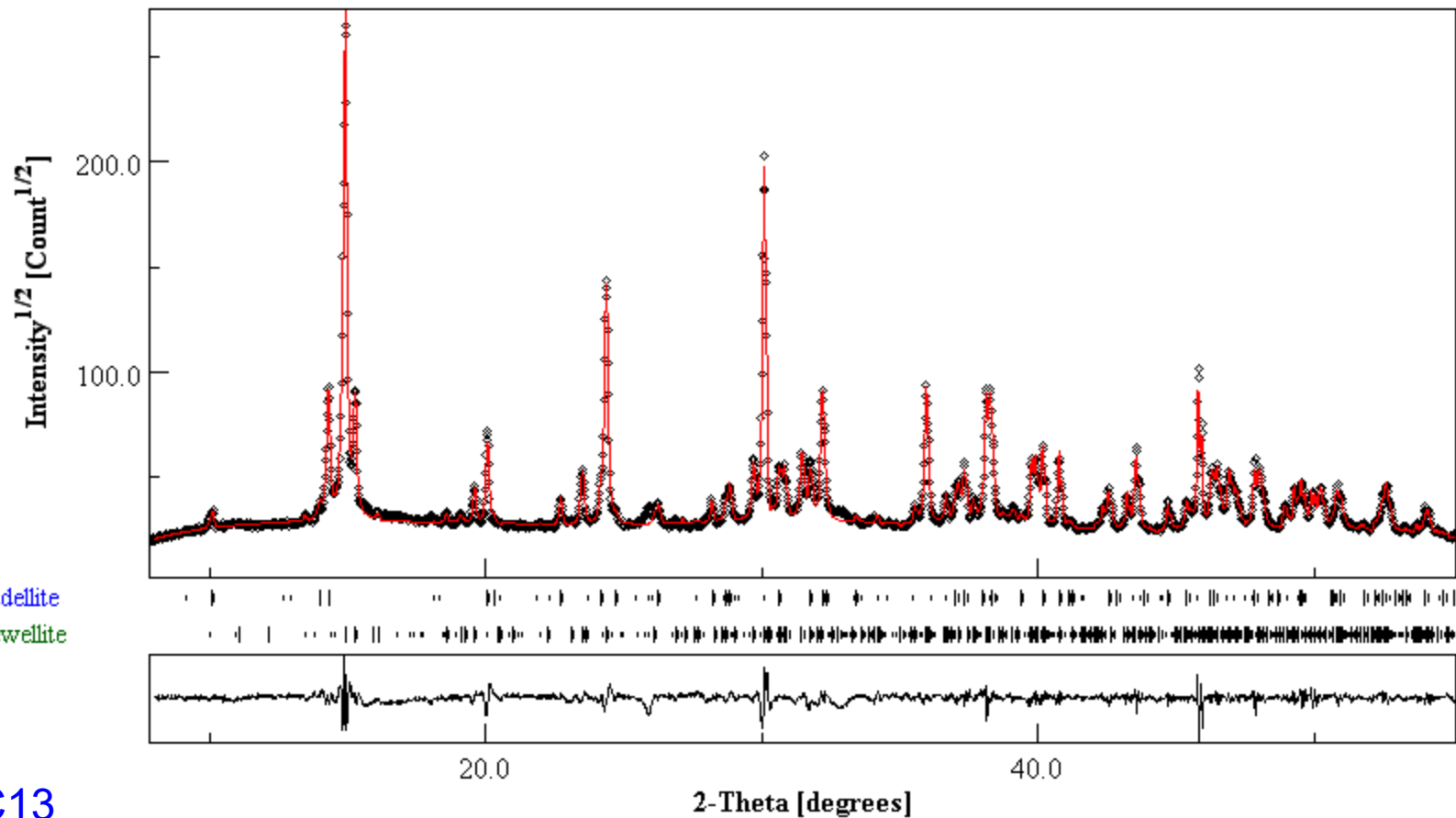




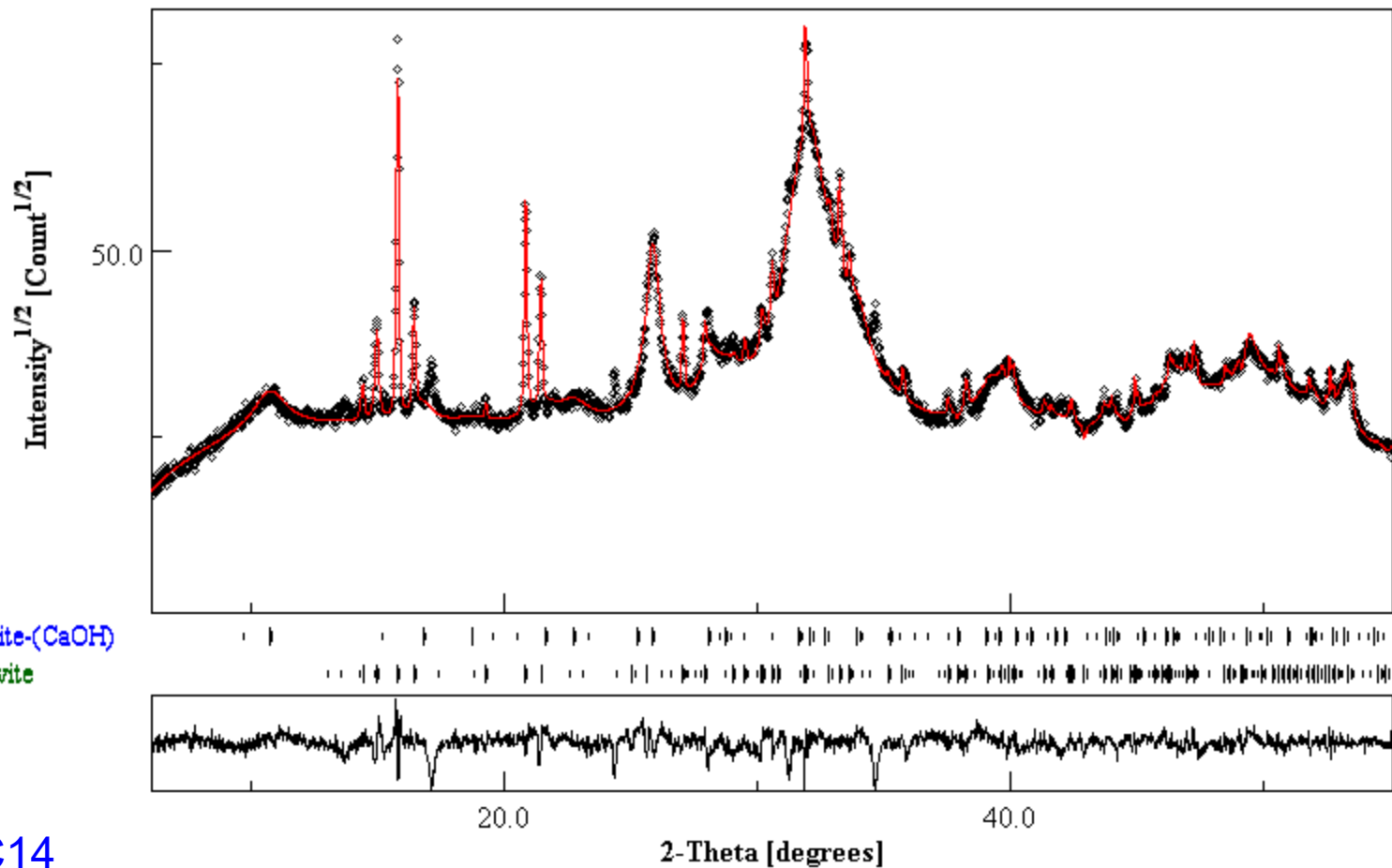




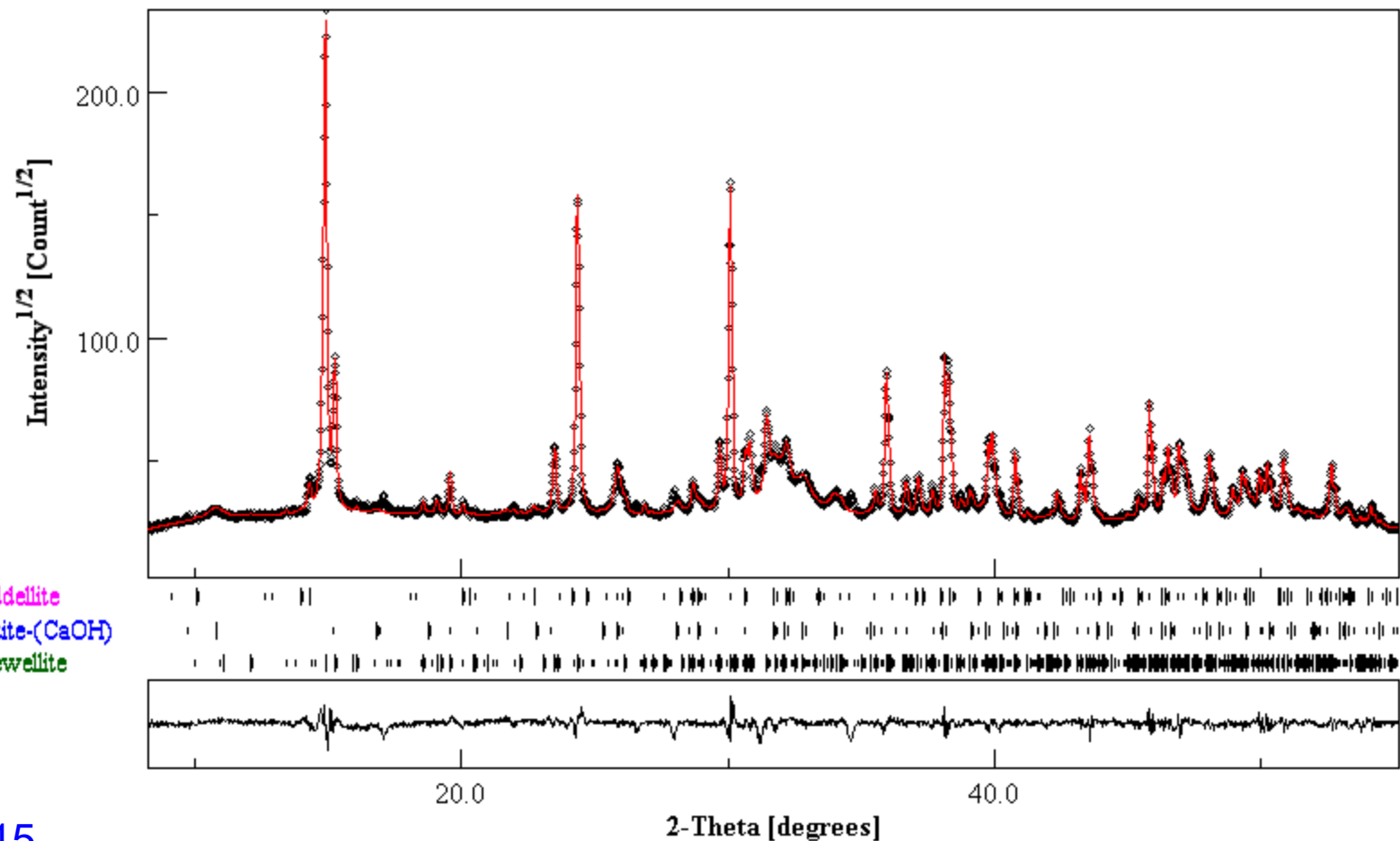
C12



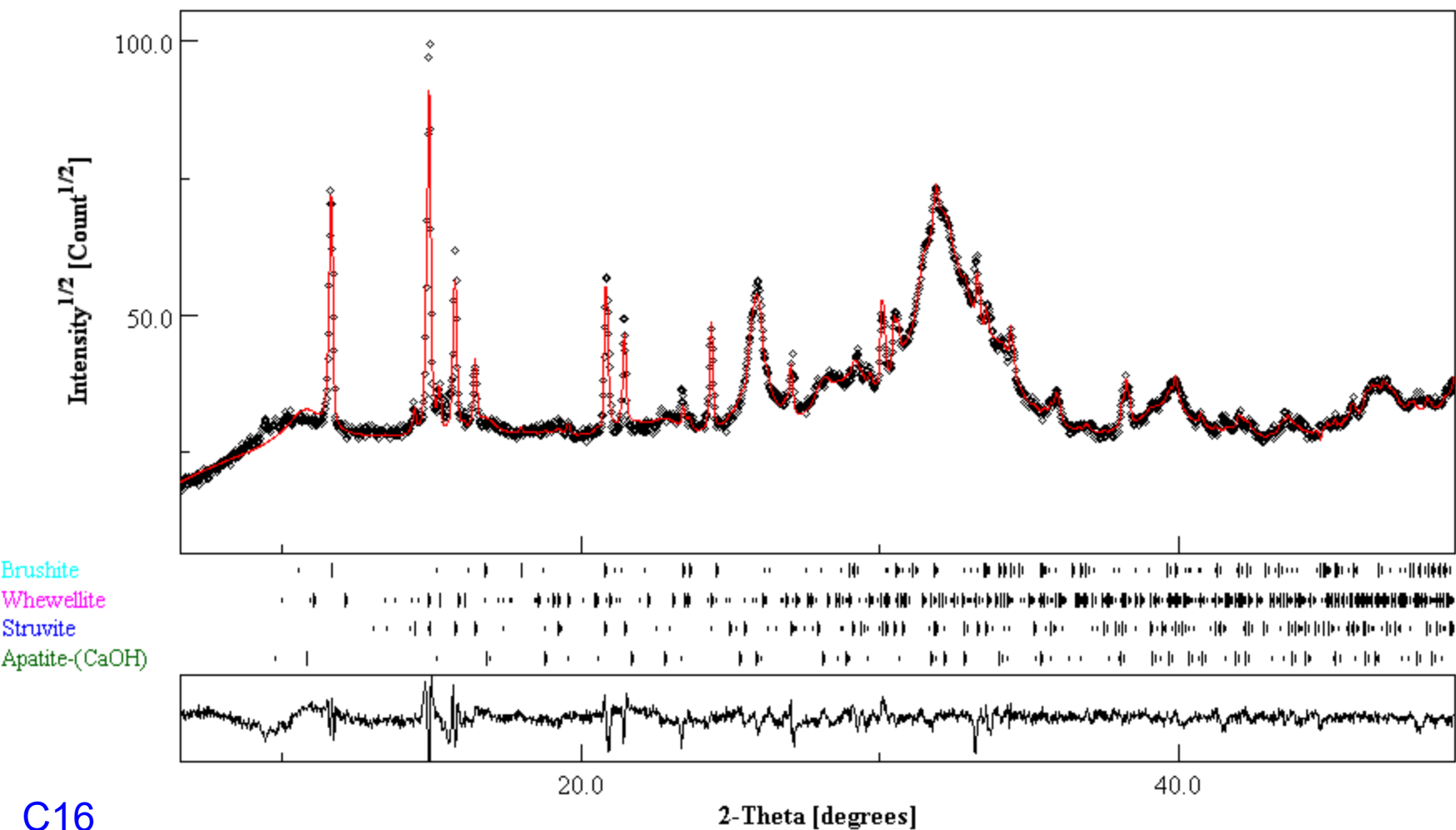
C13

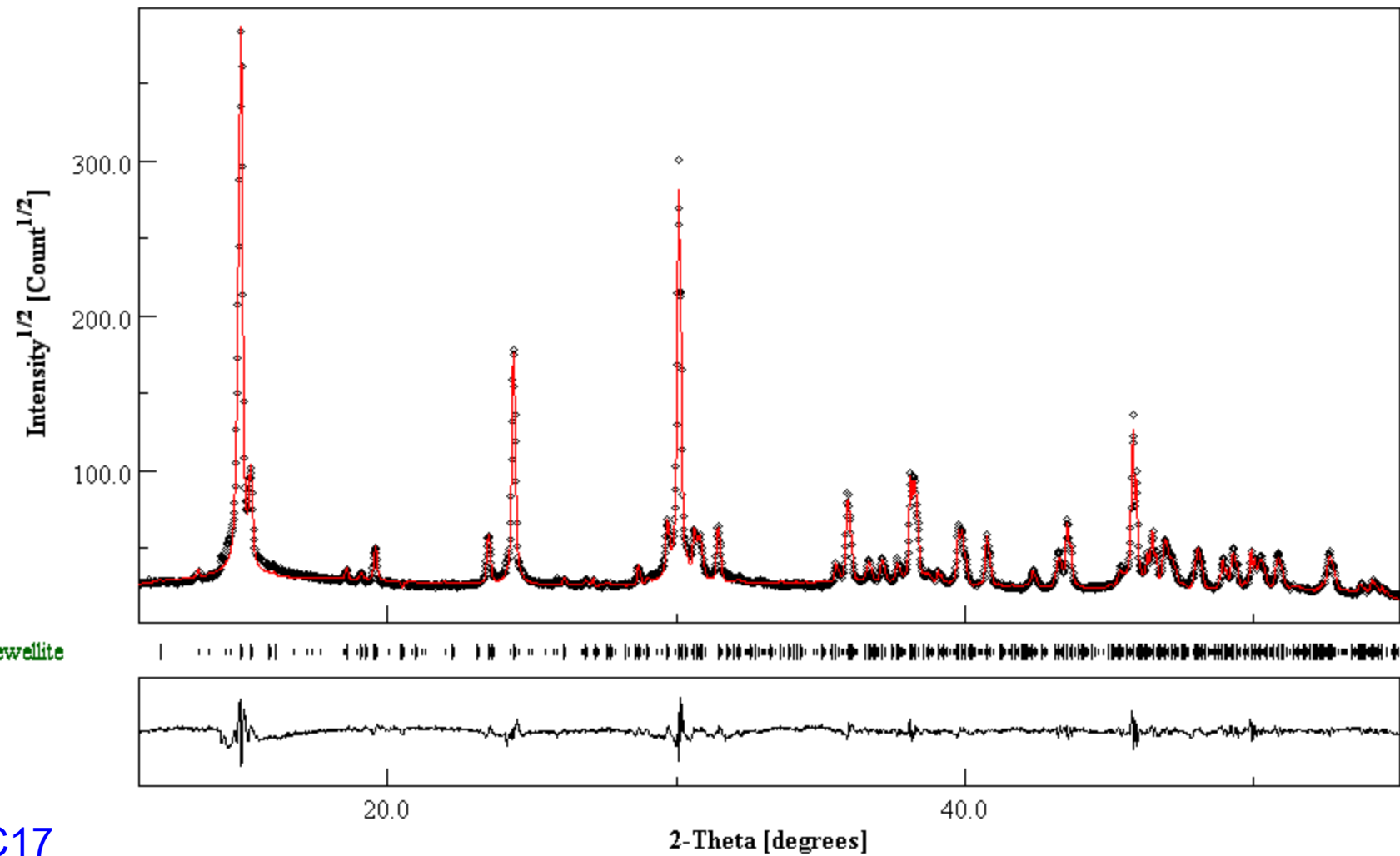


C14



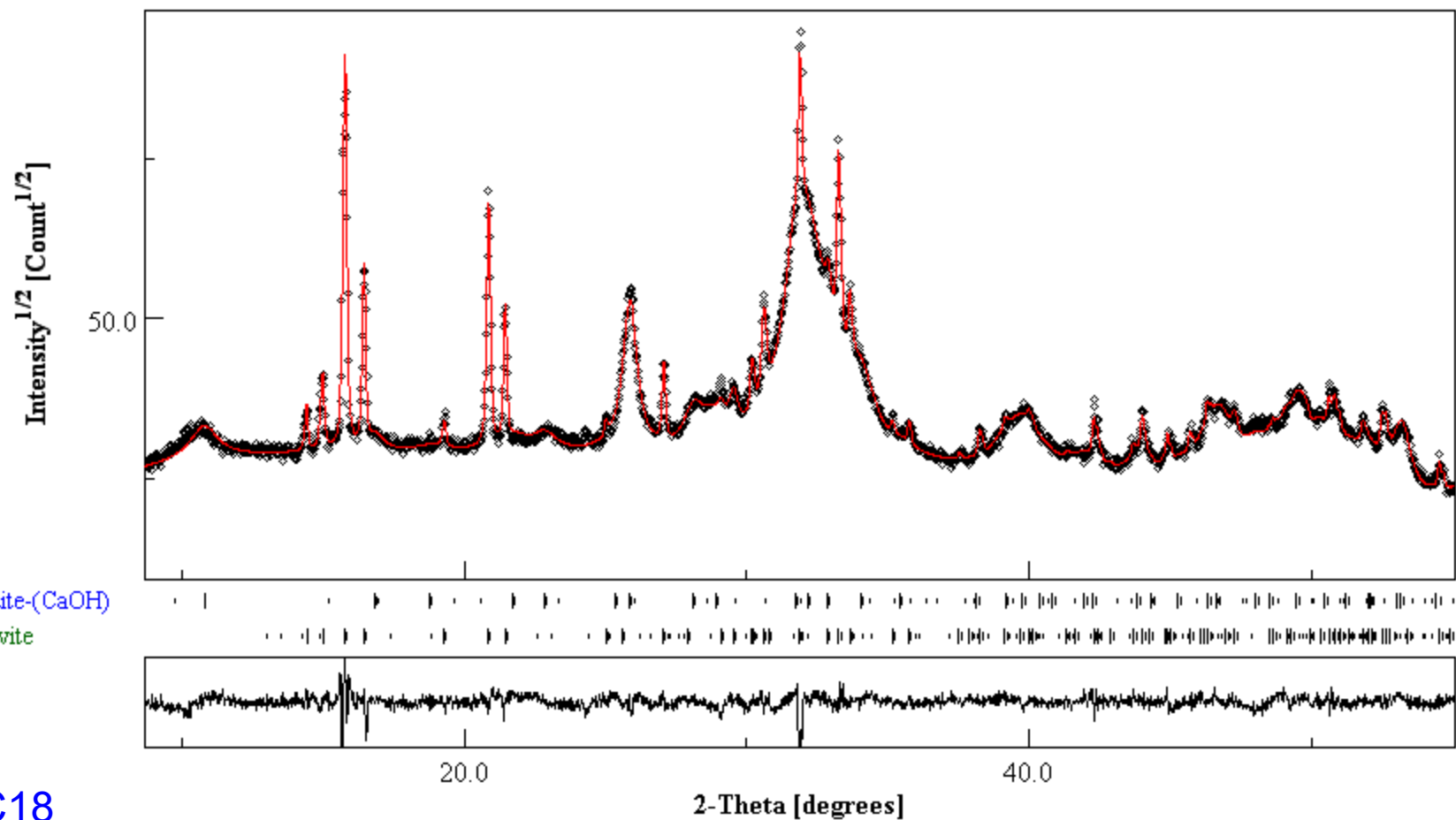
C15



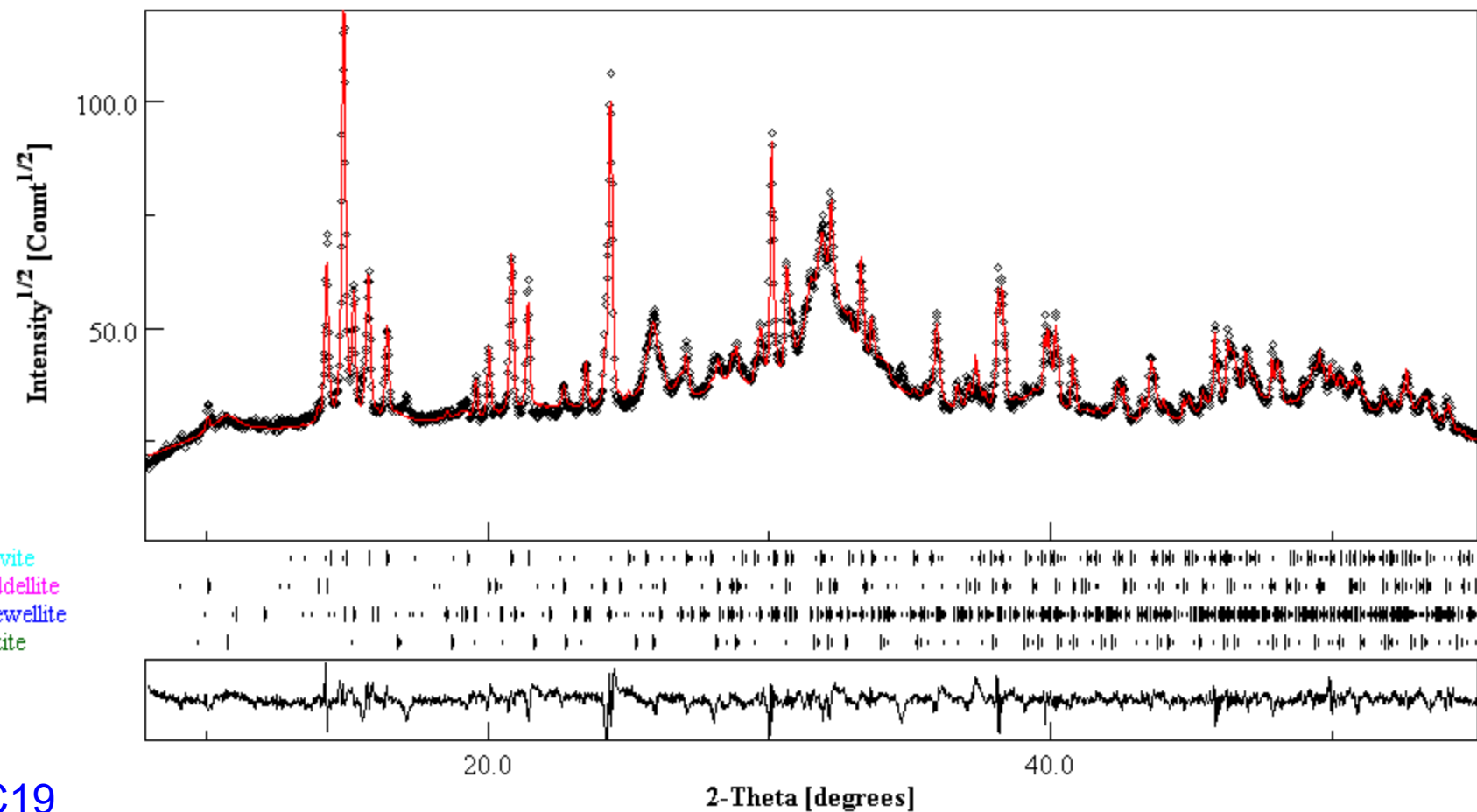


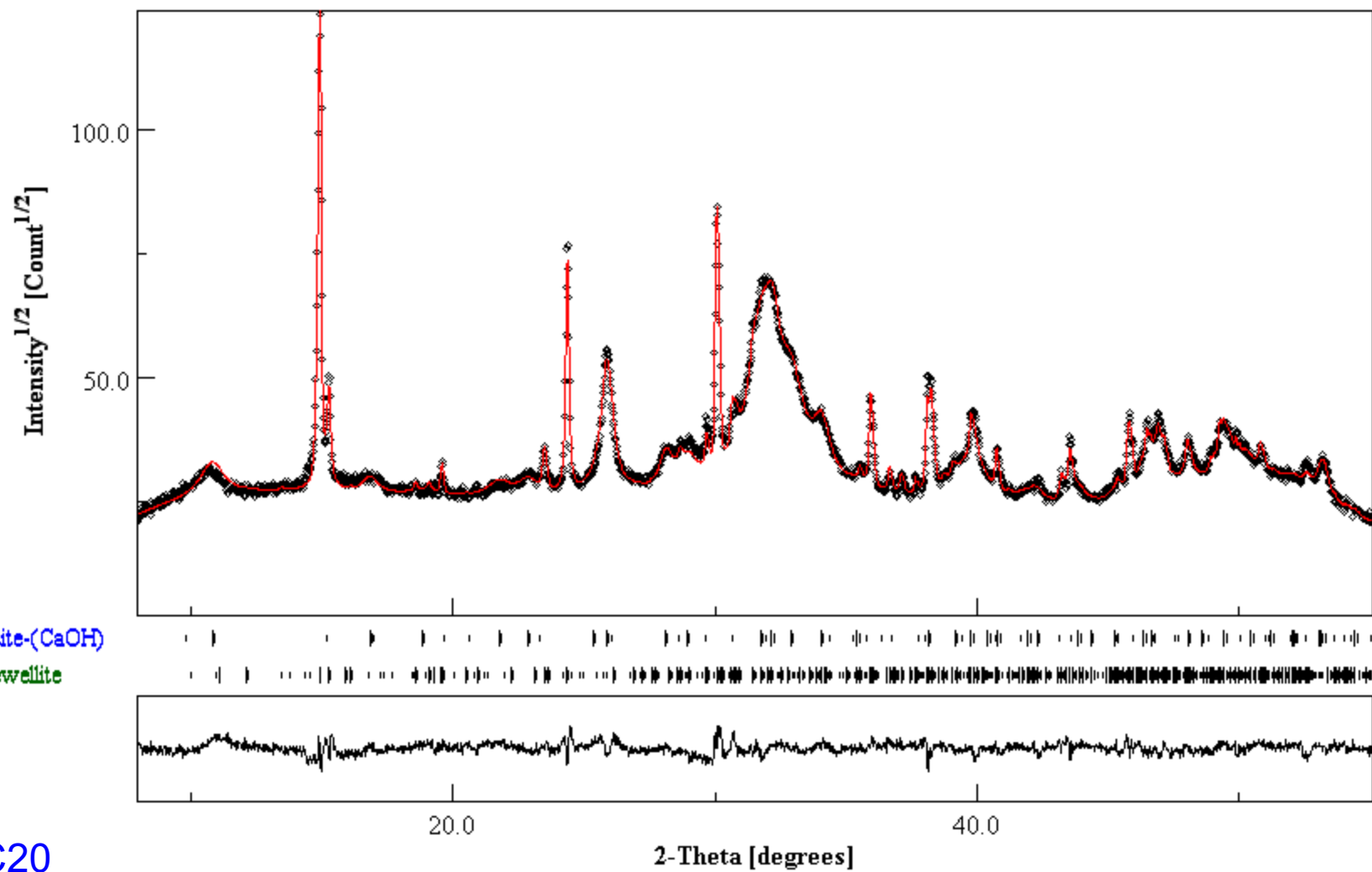
Whewellite

C17

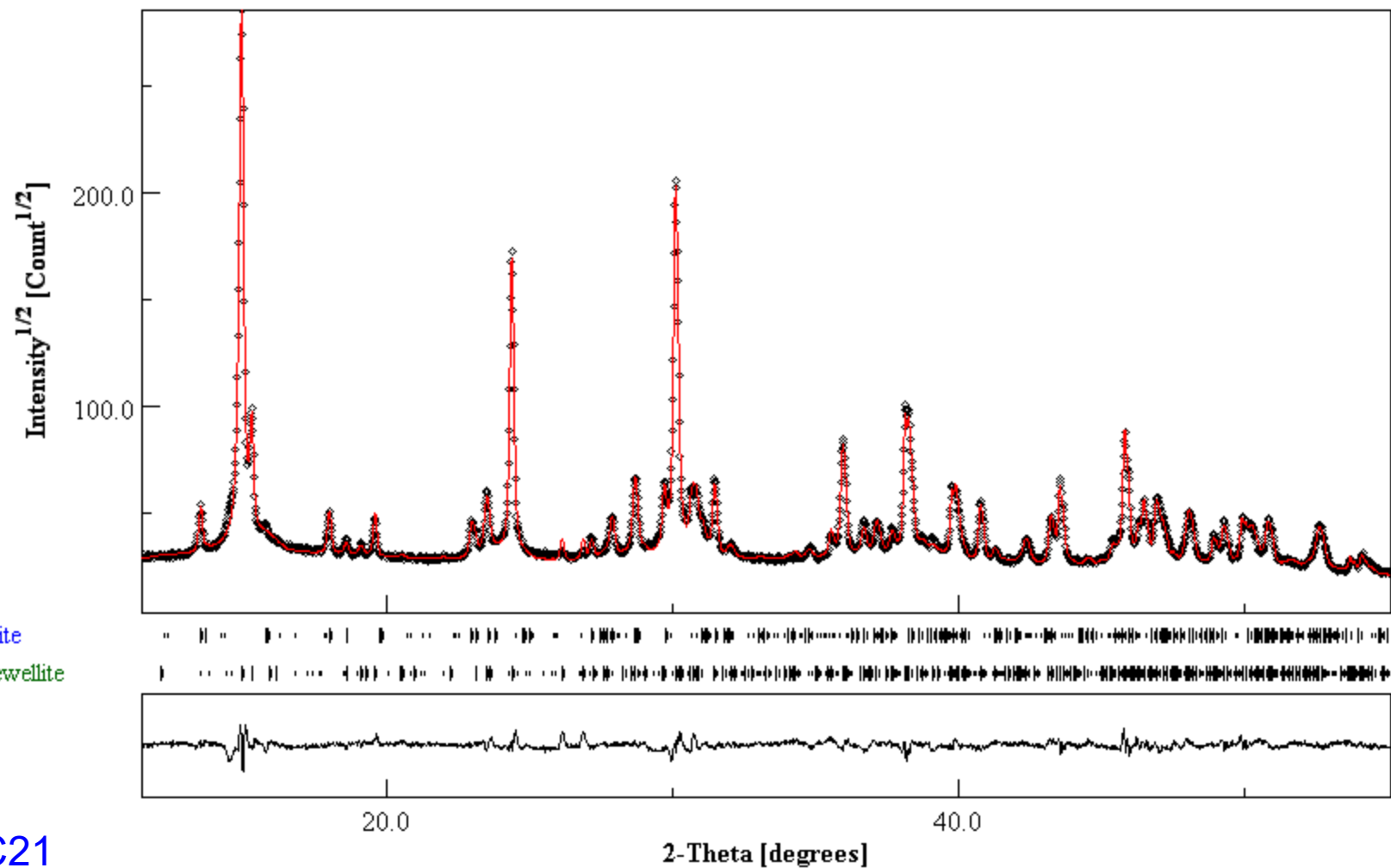


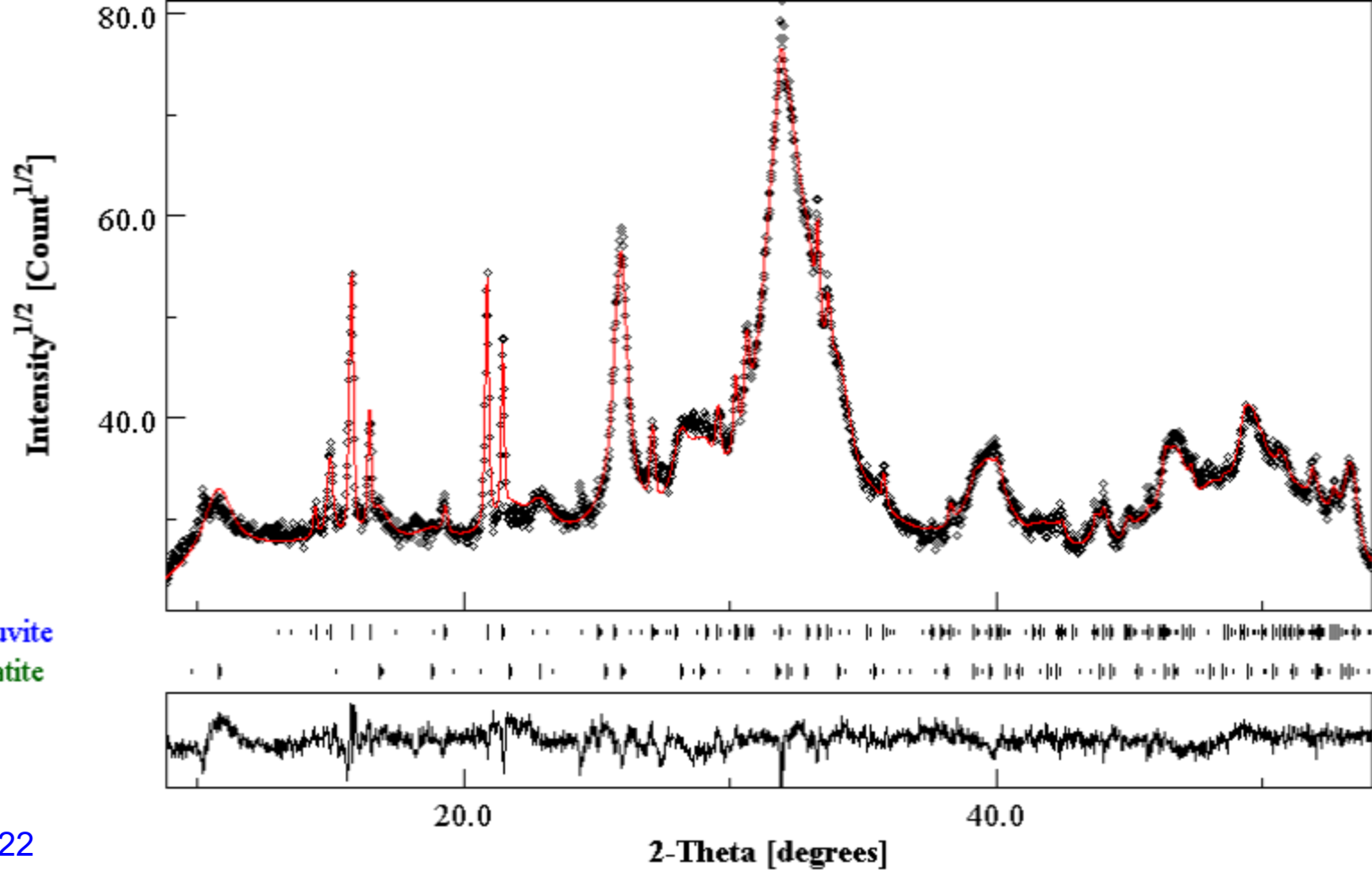
C18

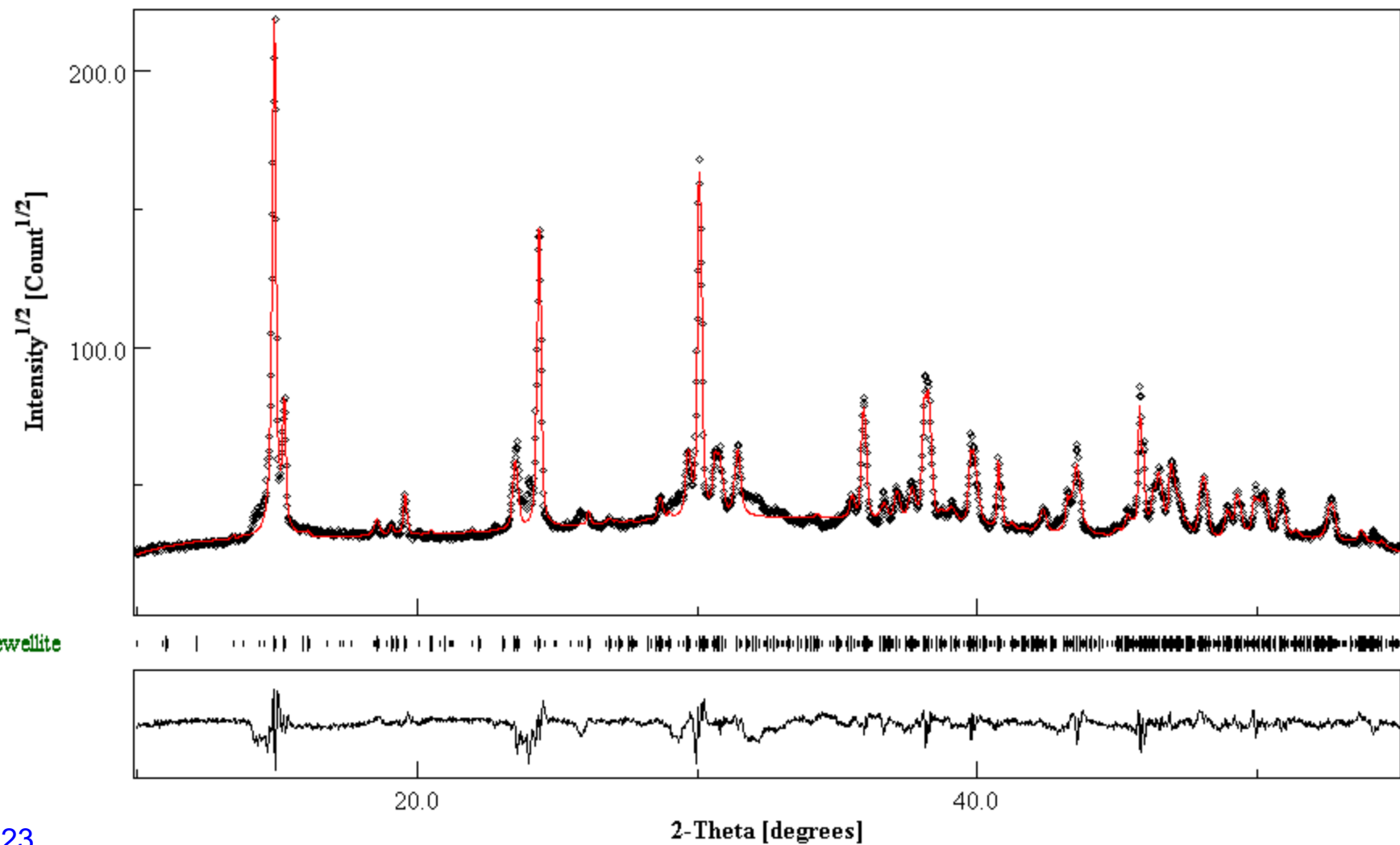




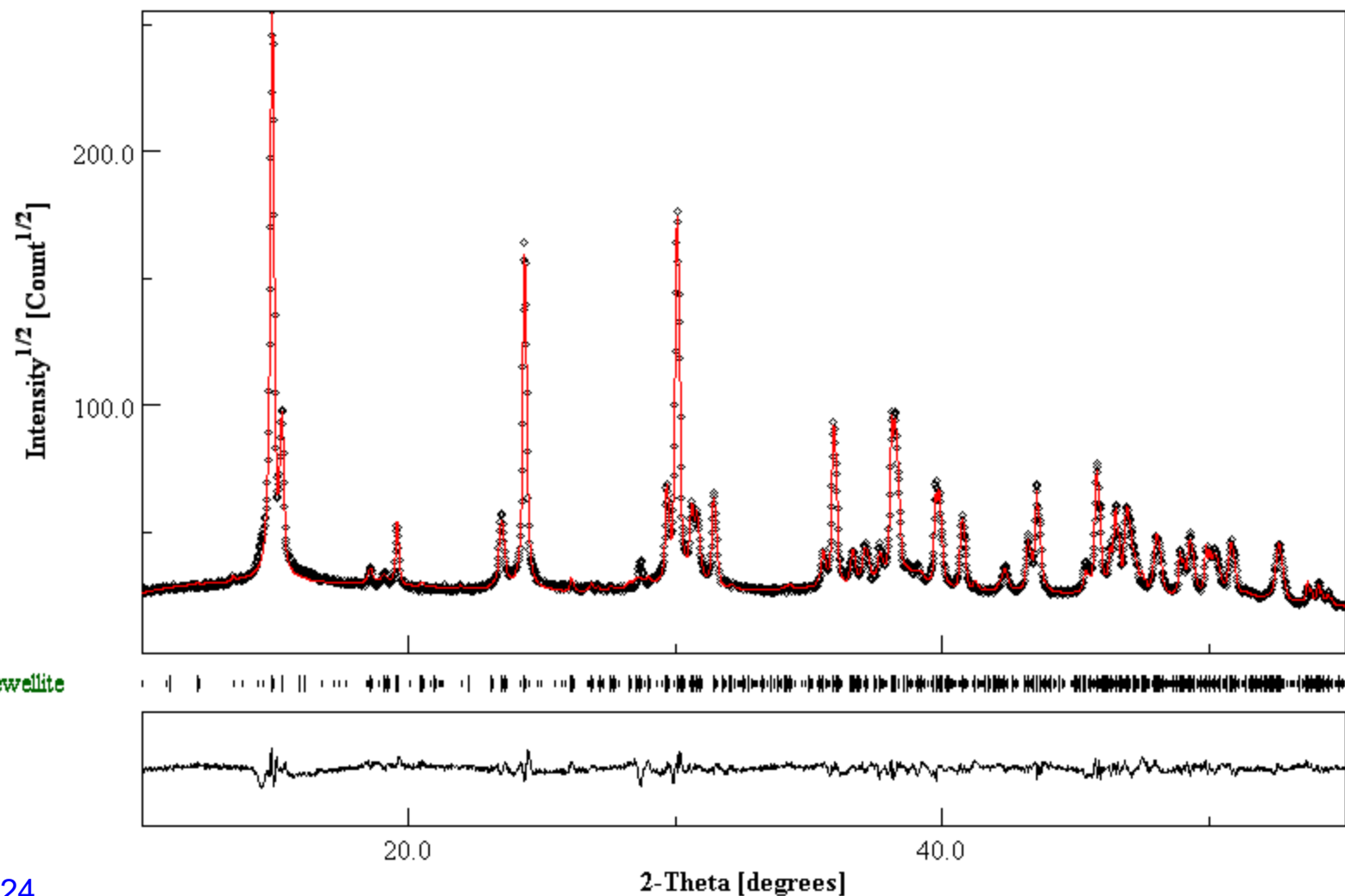
C20





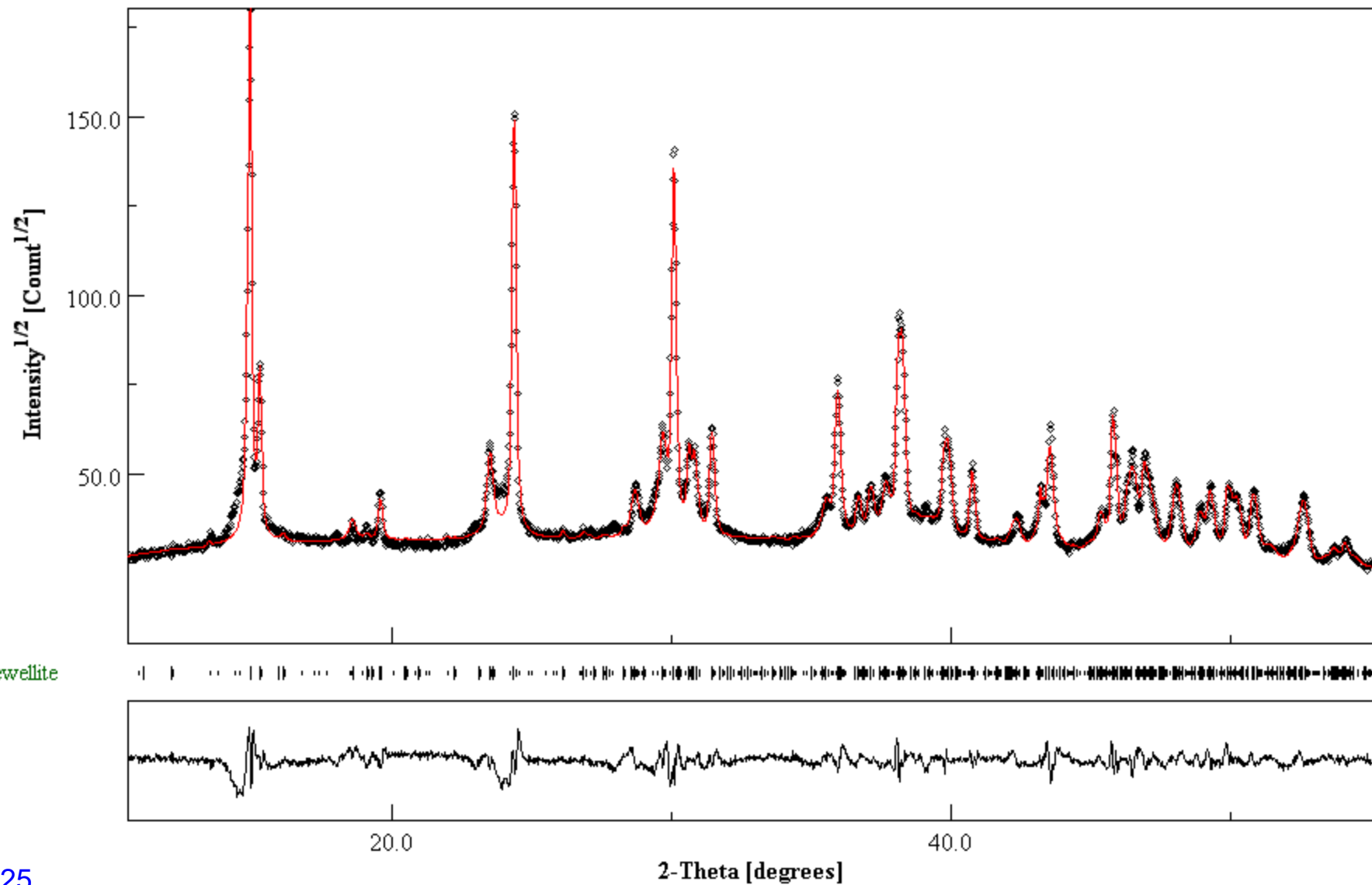


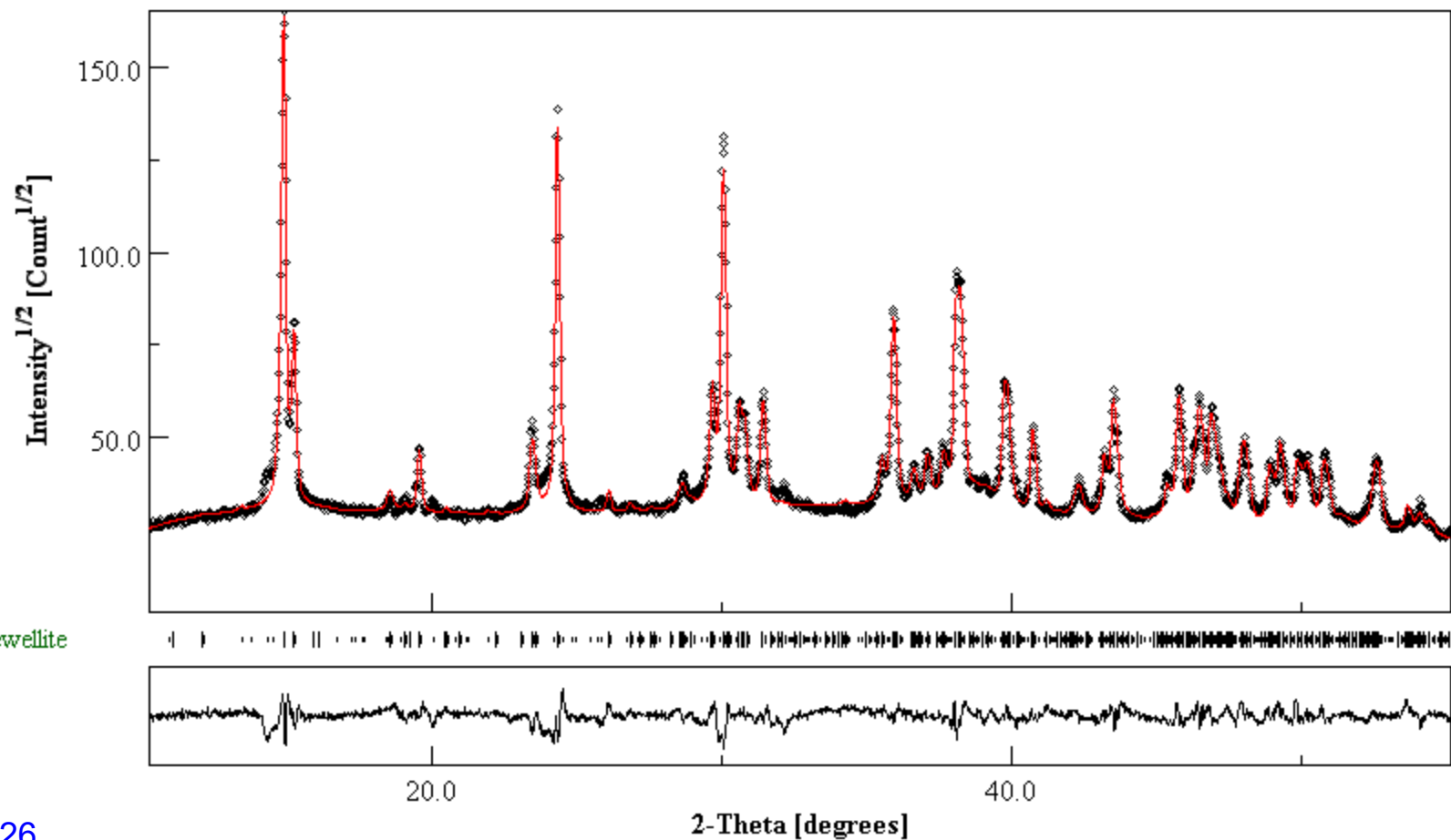
Whewellite

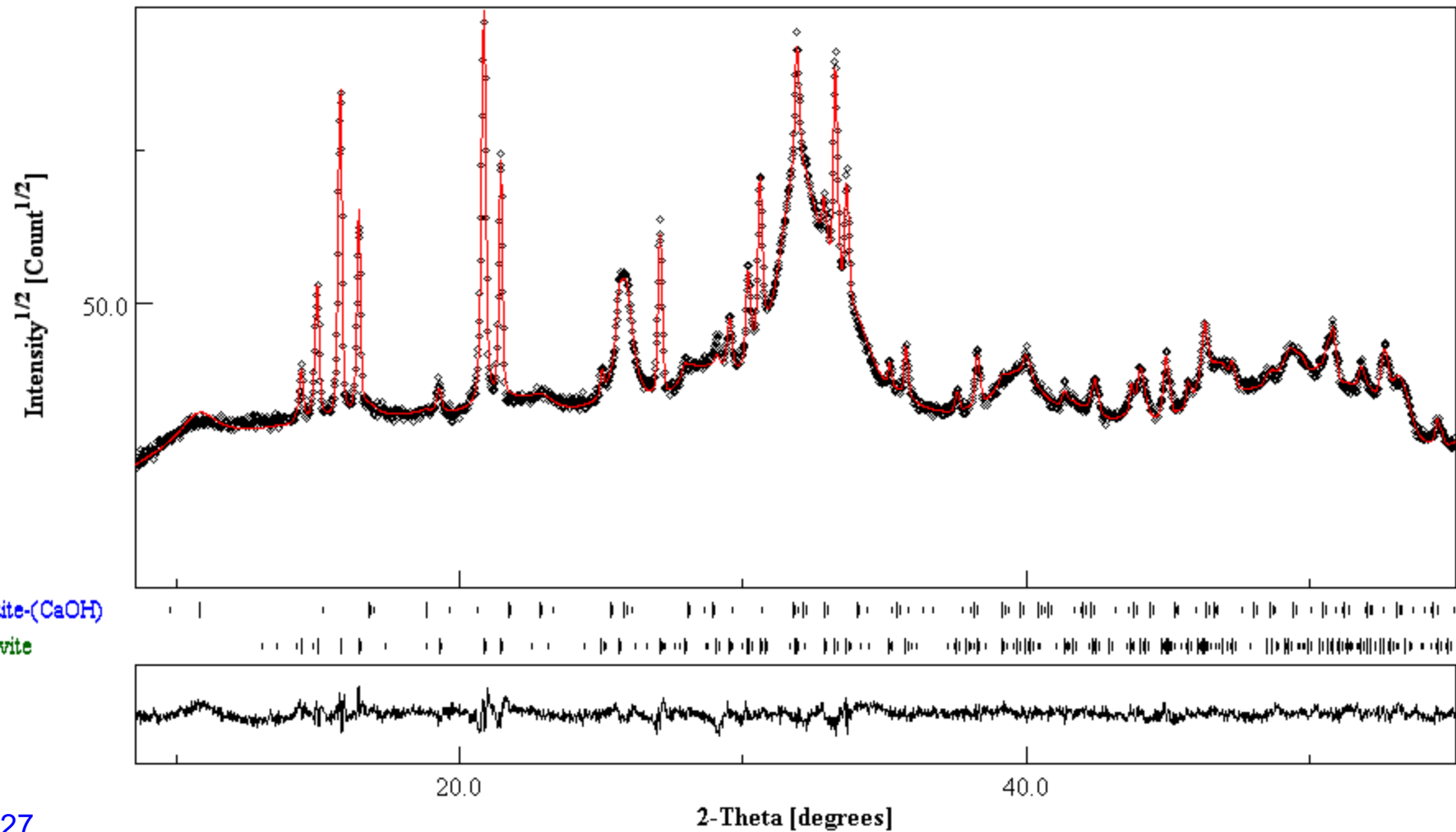


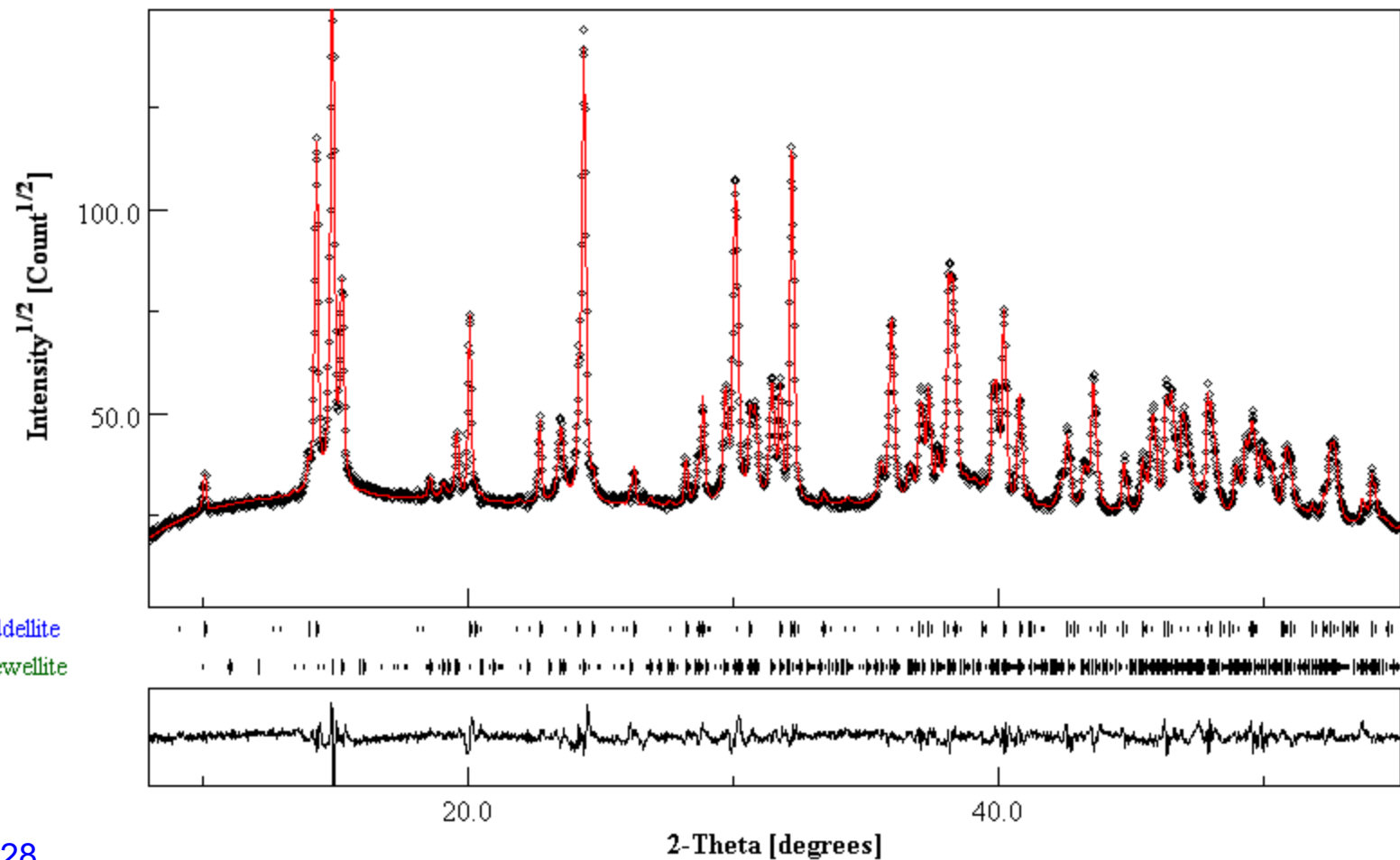
Whewellite

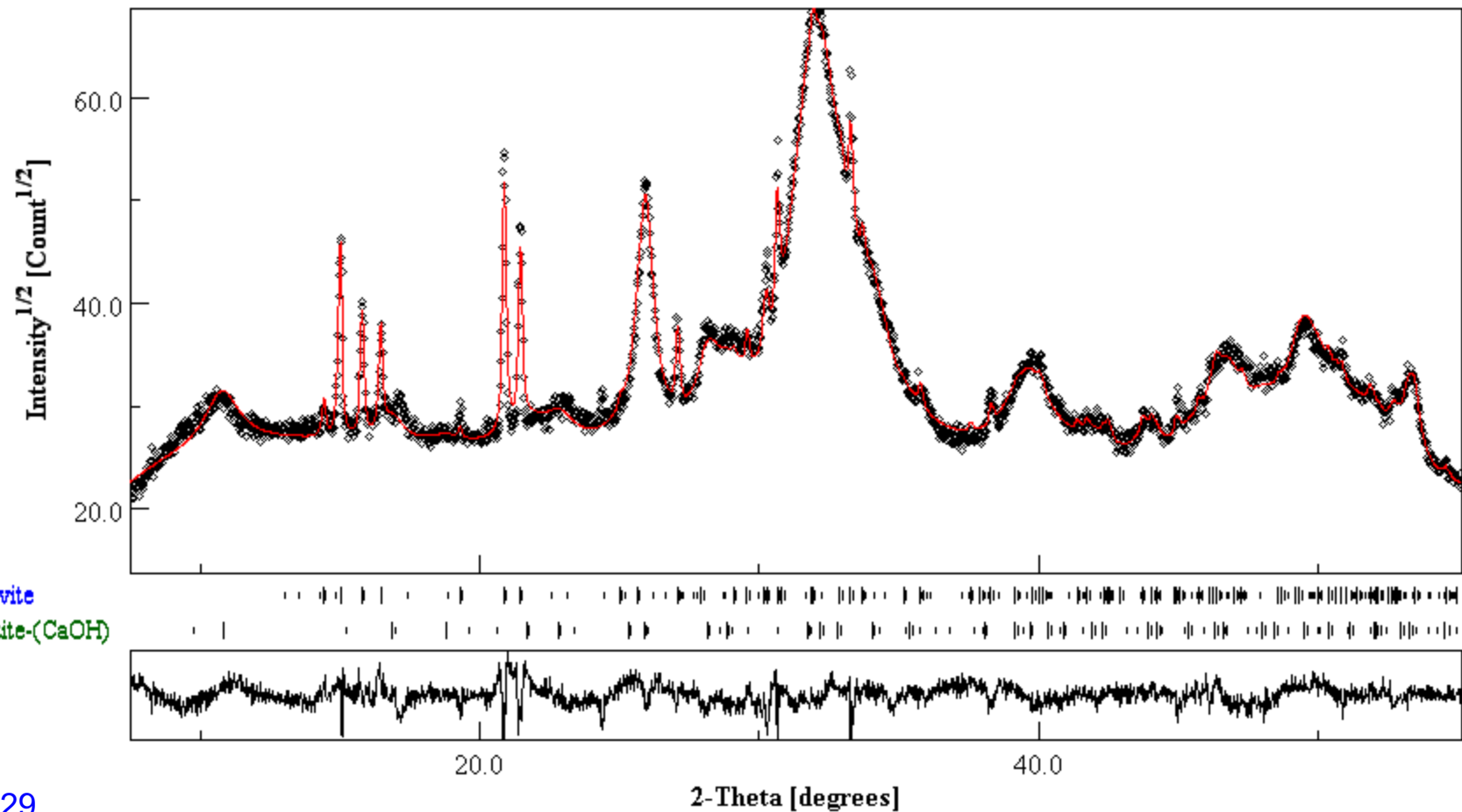
C24

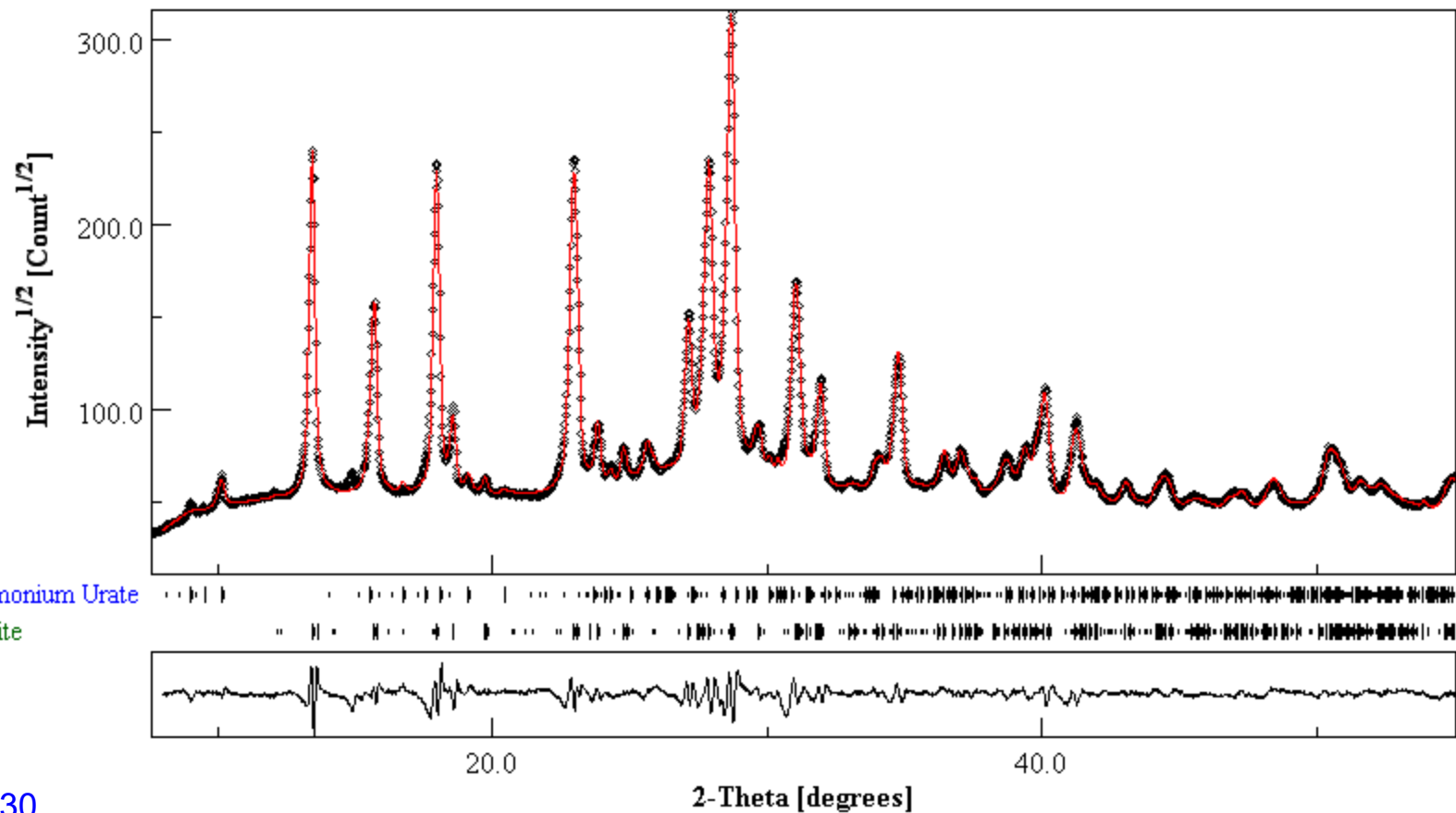


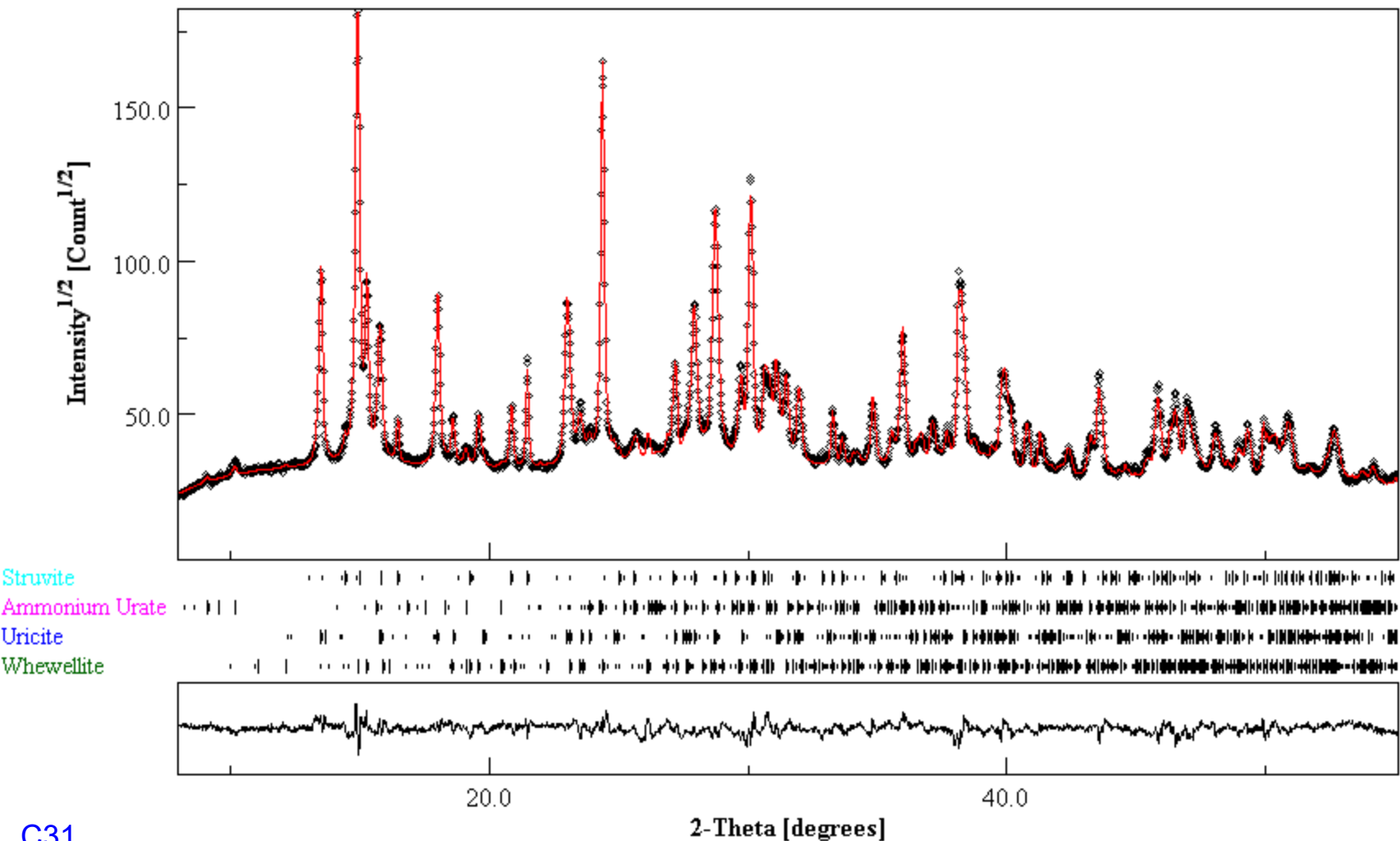


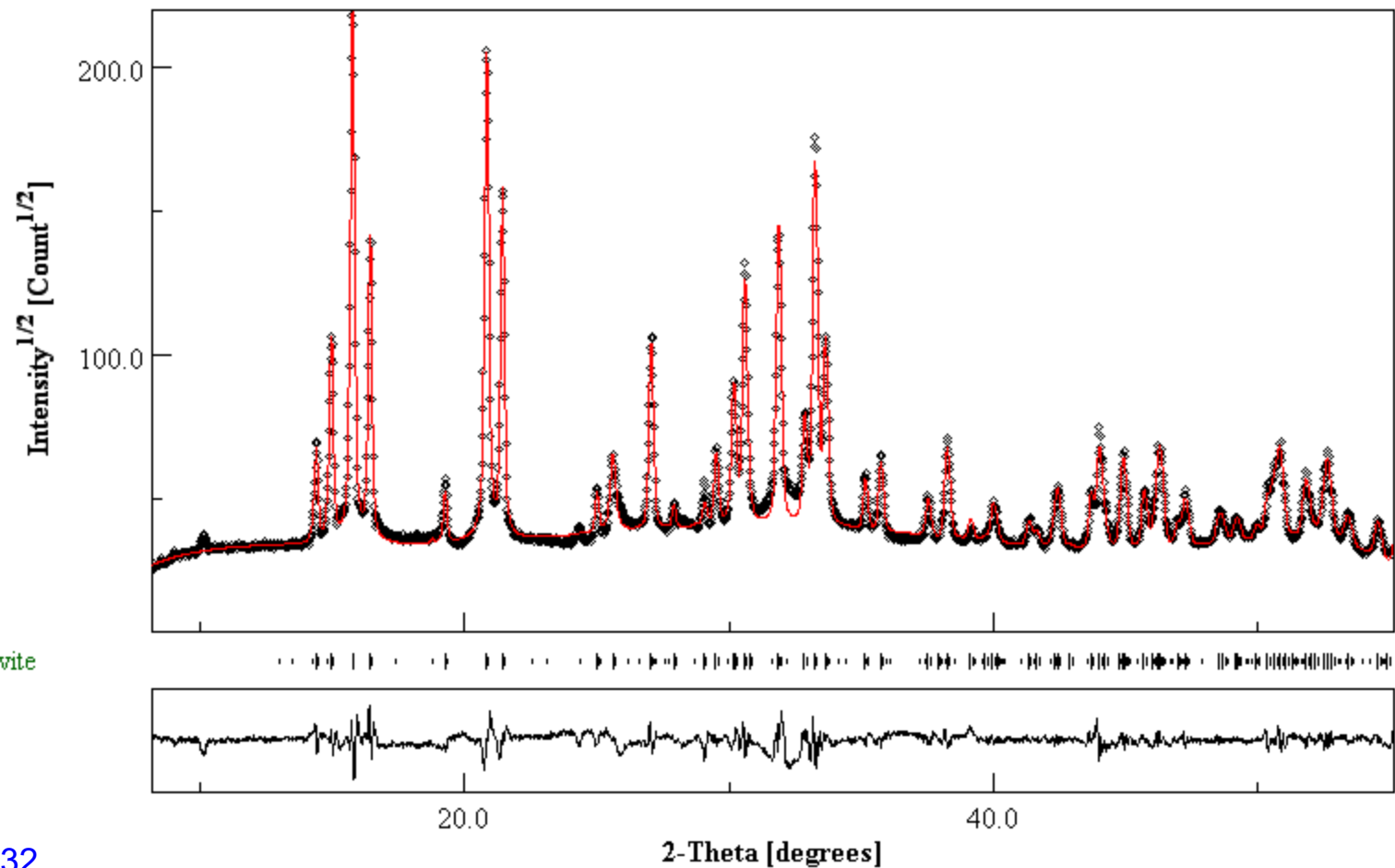


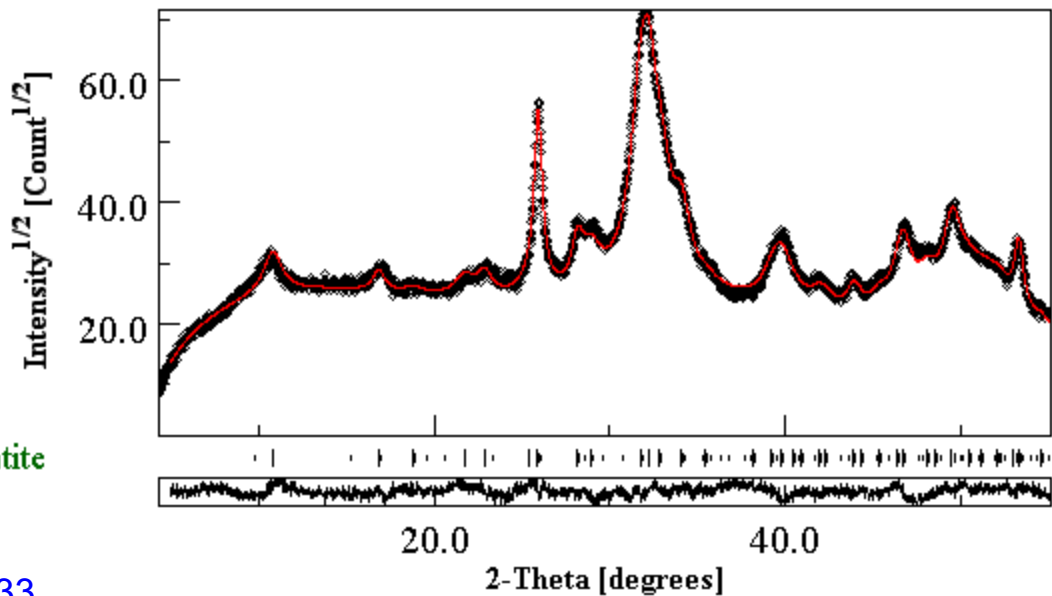






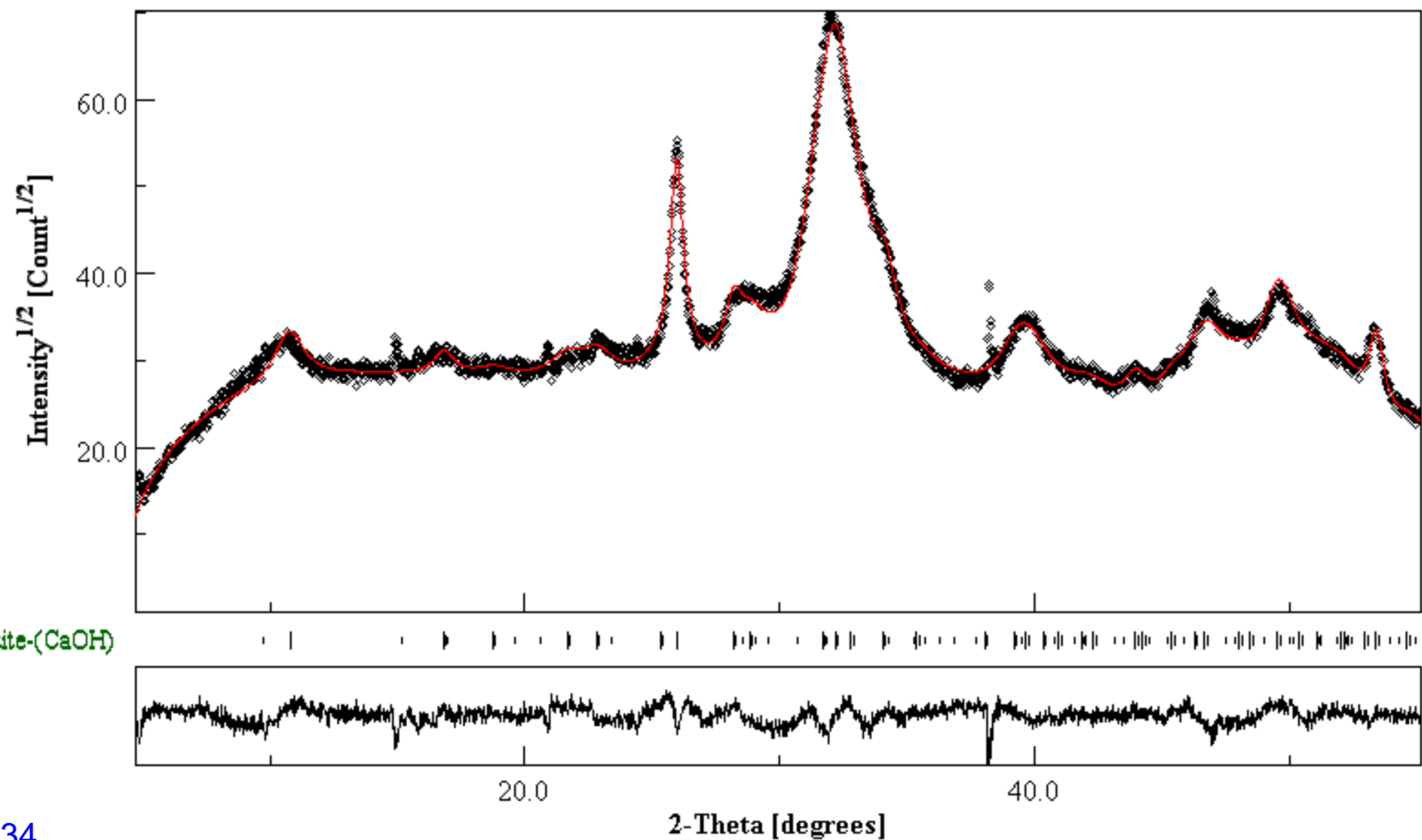


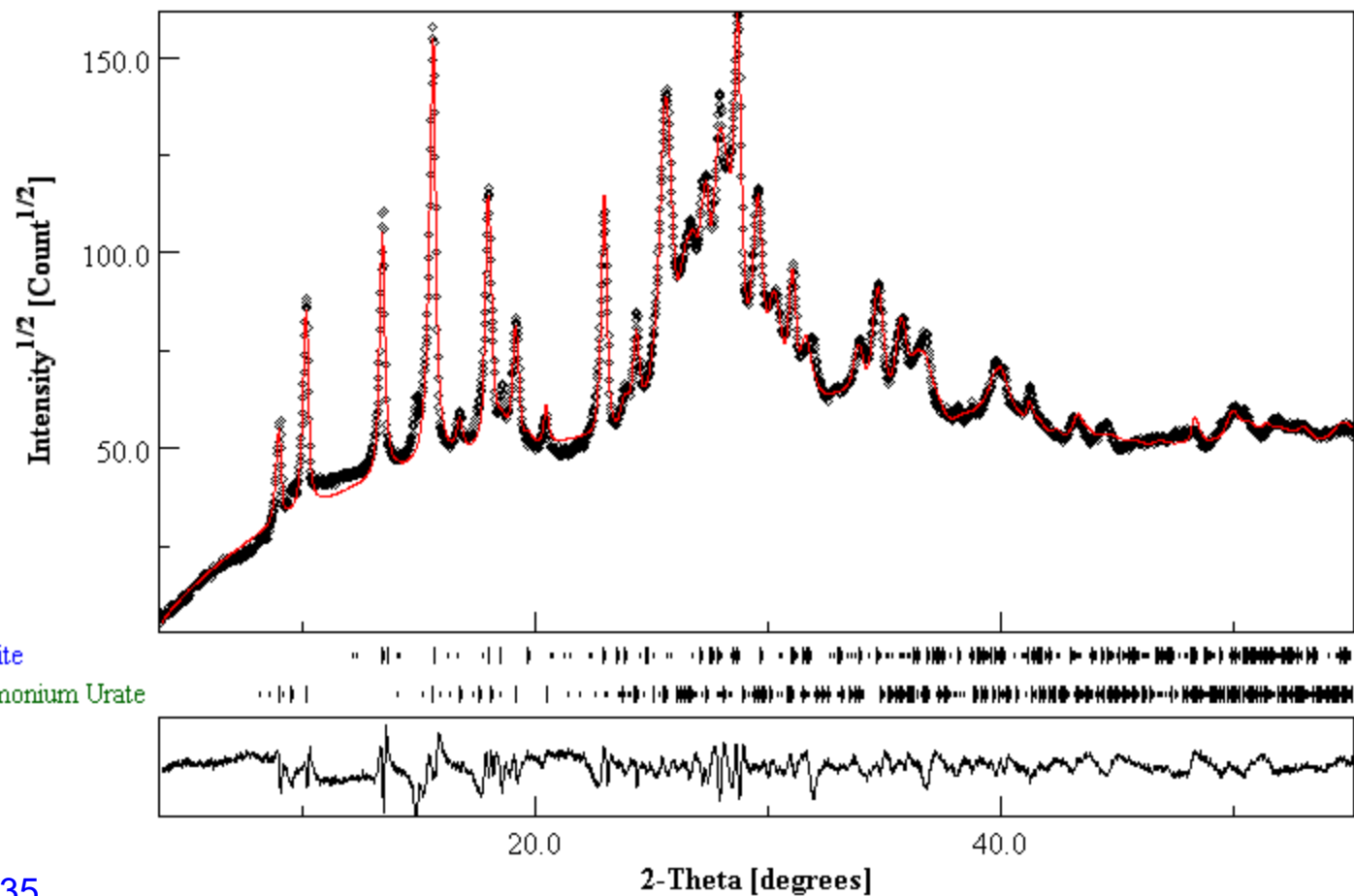




Apatite

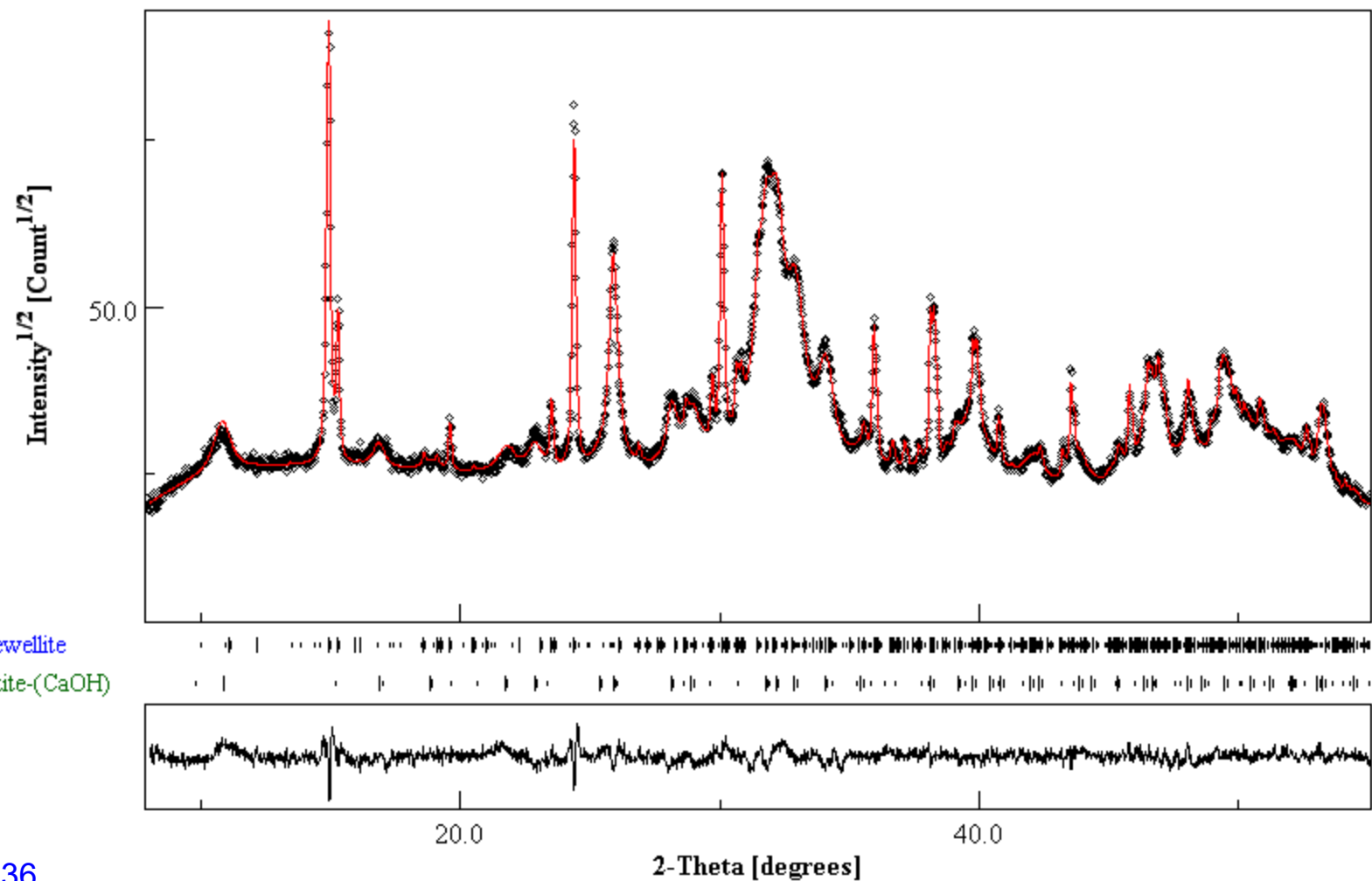
C33

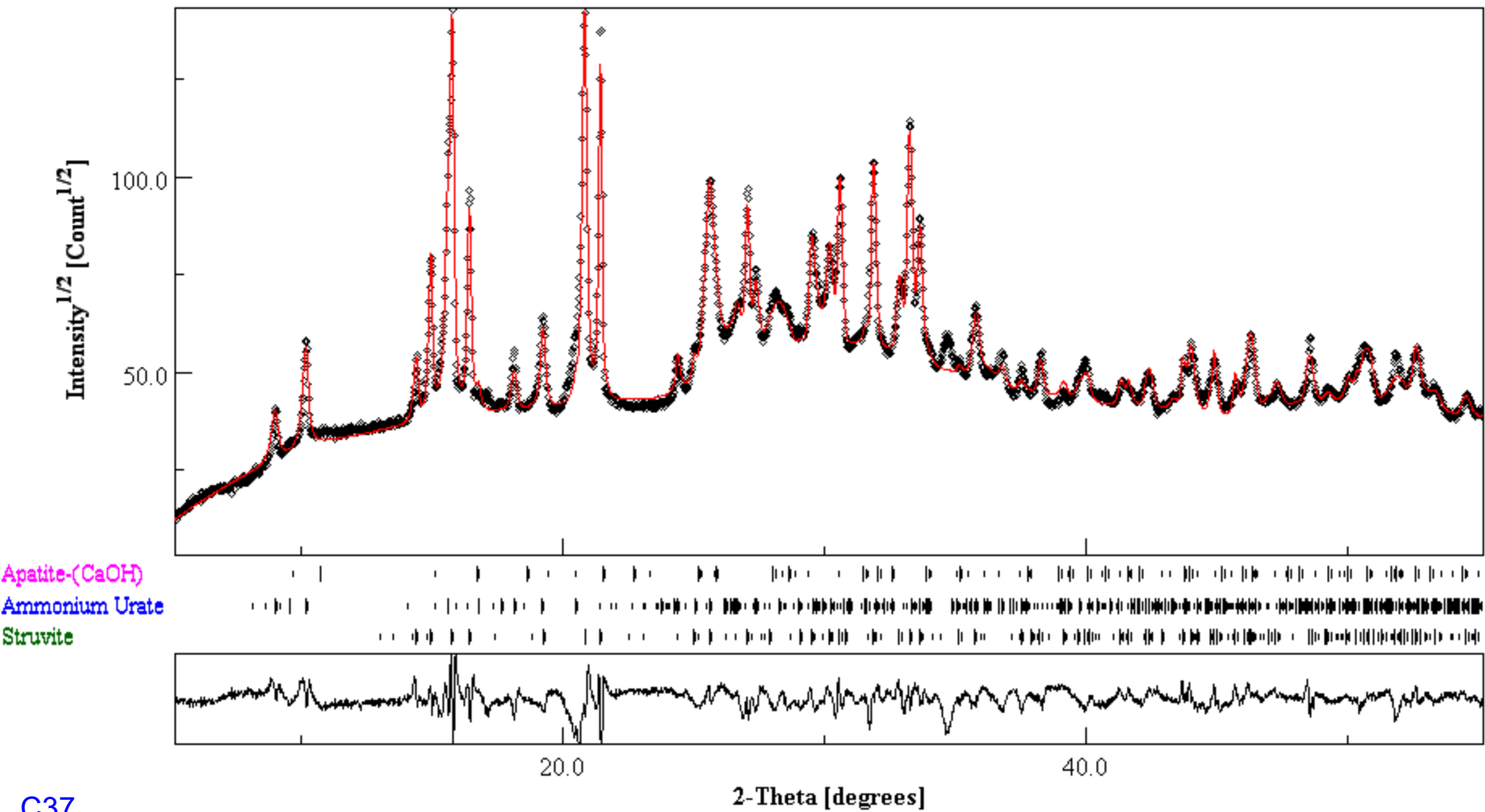


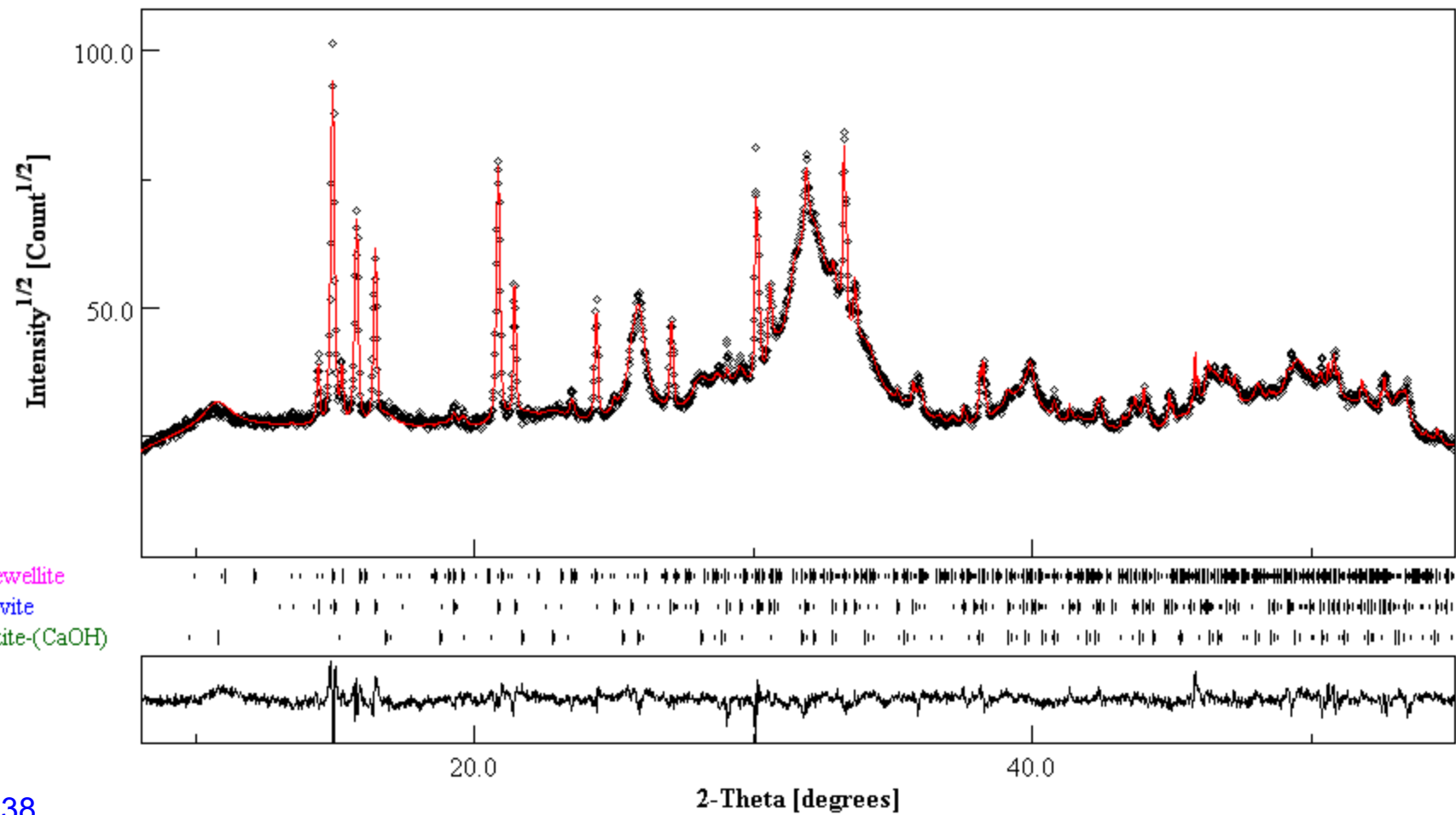


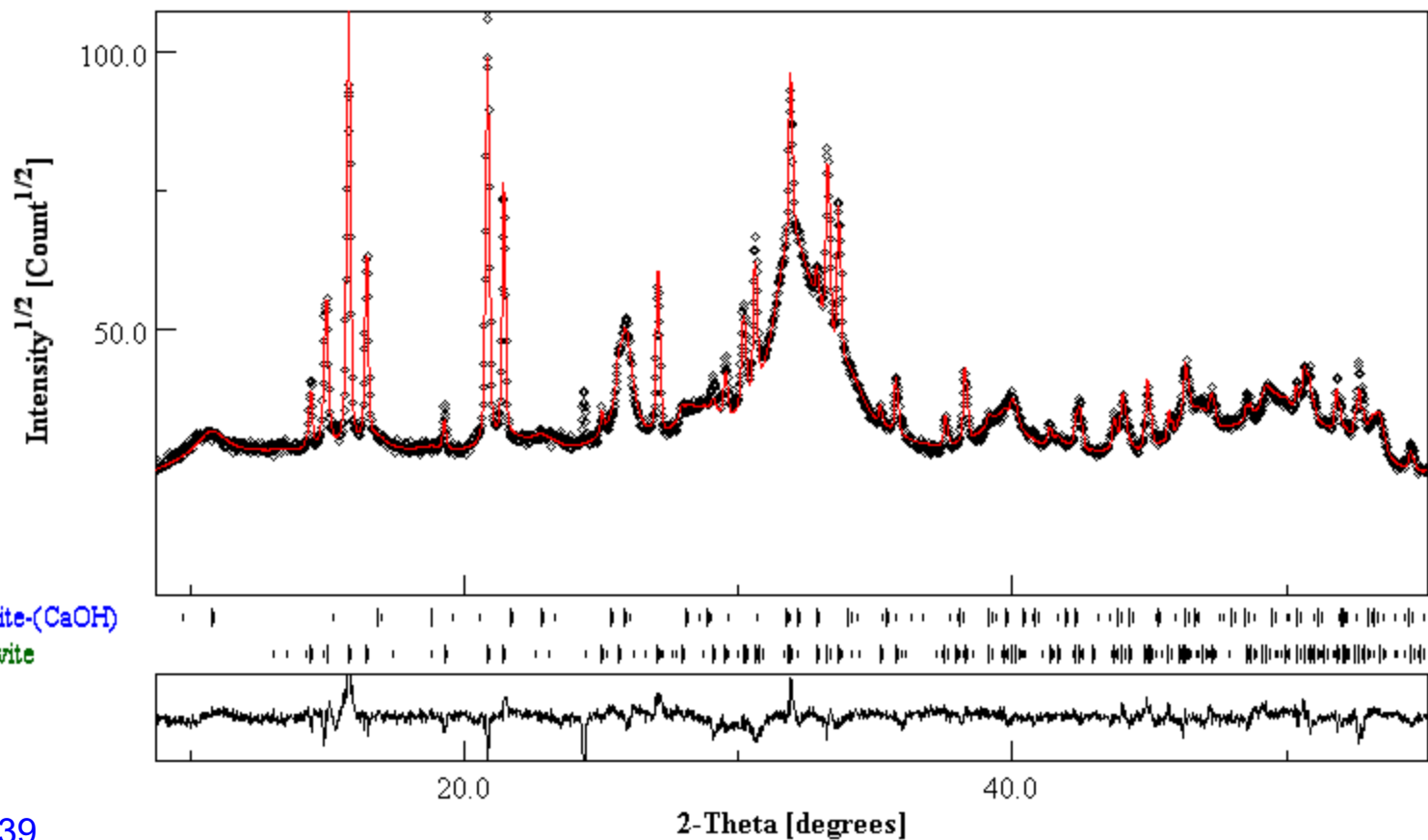
Uricite

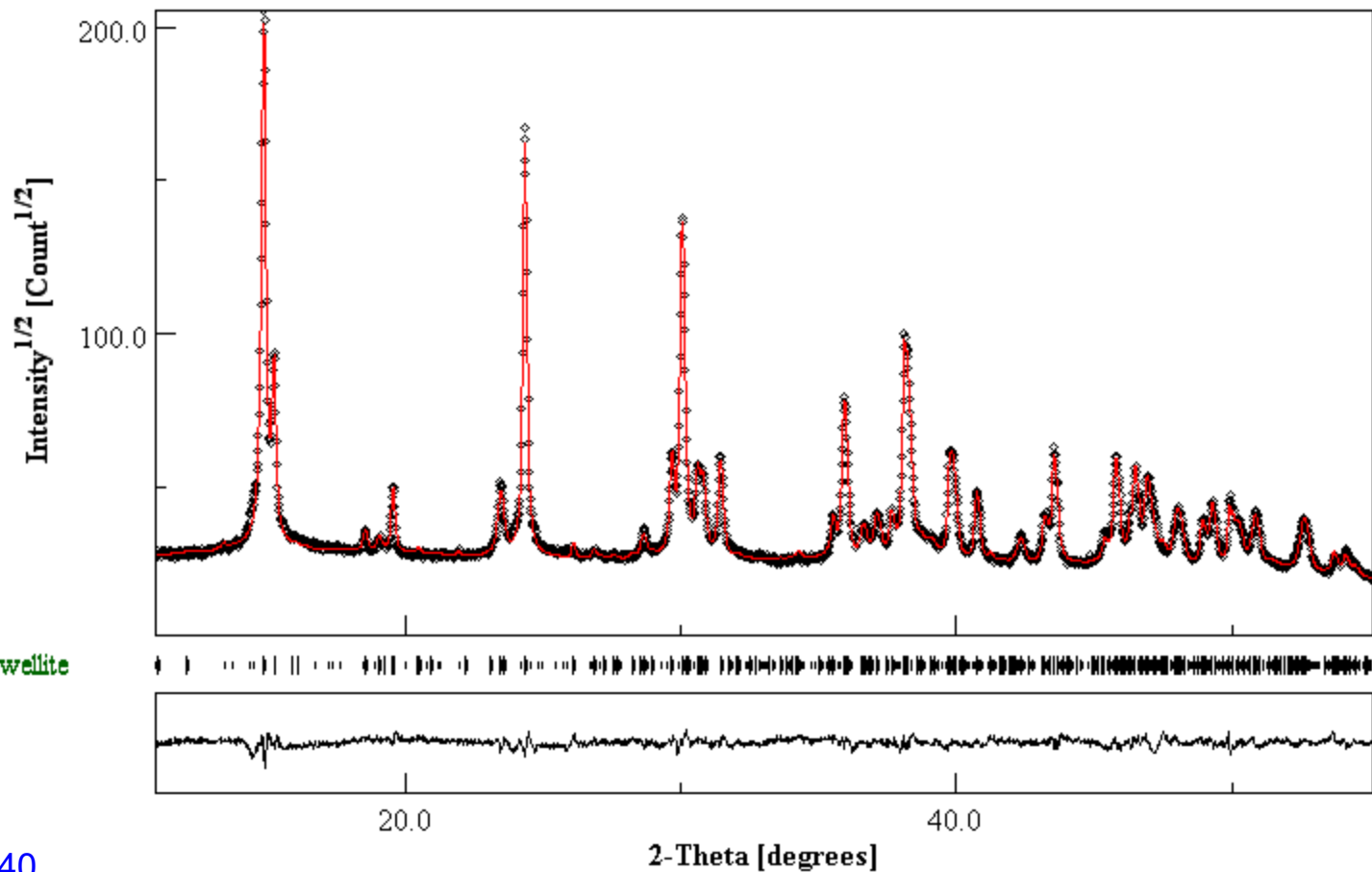
Ammonium Urate











Whewellite

C4O

