



JOURNAL OF
APPLIED
CRYSTALLOGRAPHY

Volume 51 (2018)

Supporting information for article:

Accurate data processing for neutron Laue diffractometers

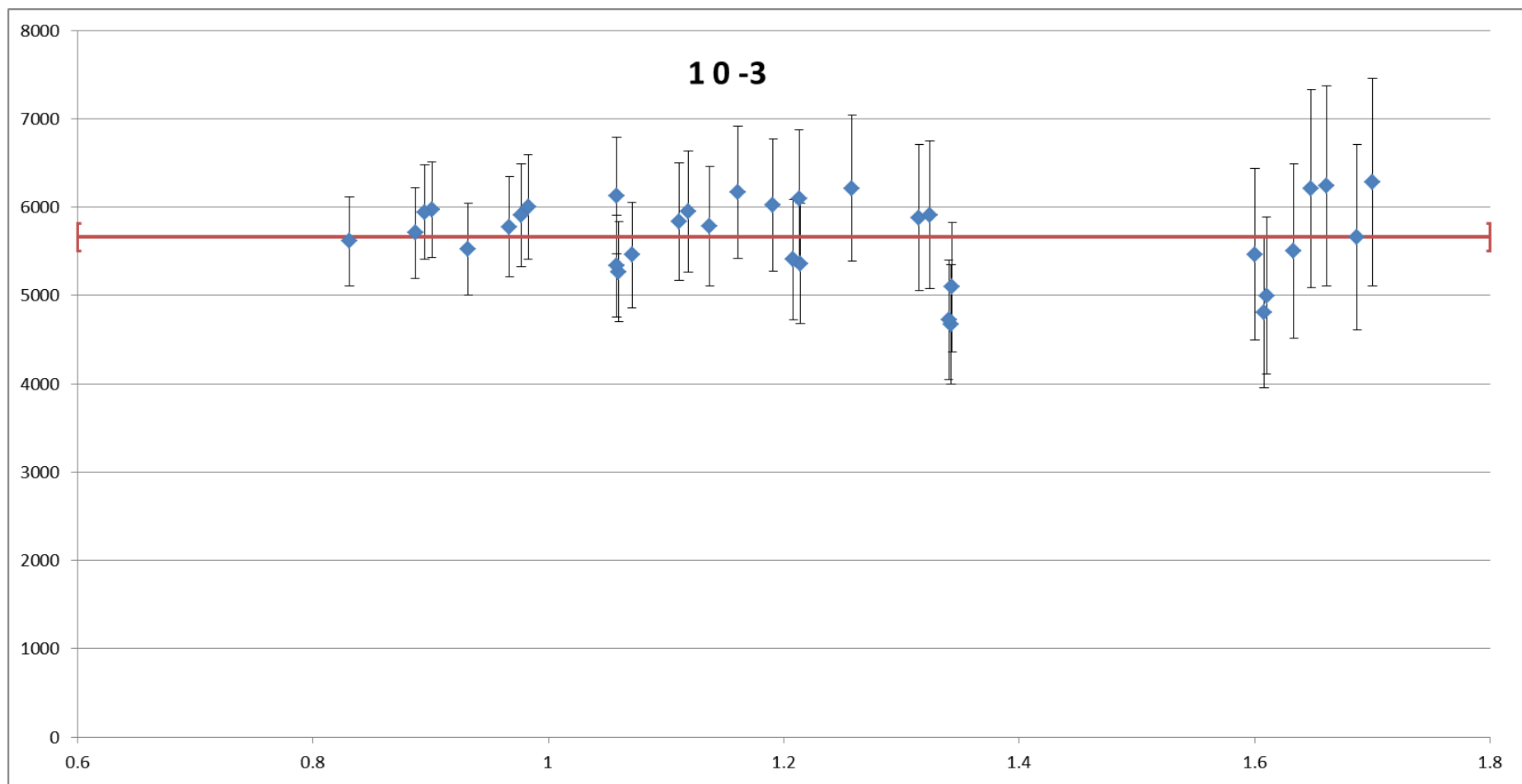
Ross O. Piltz

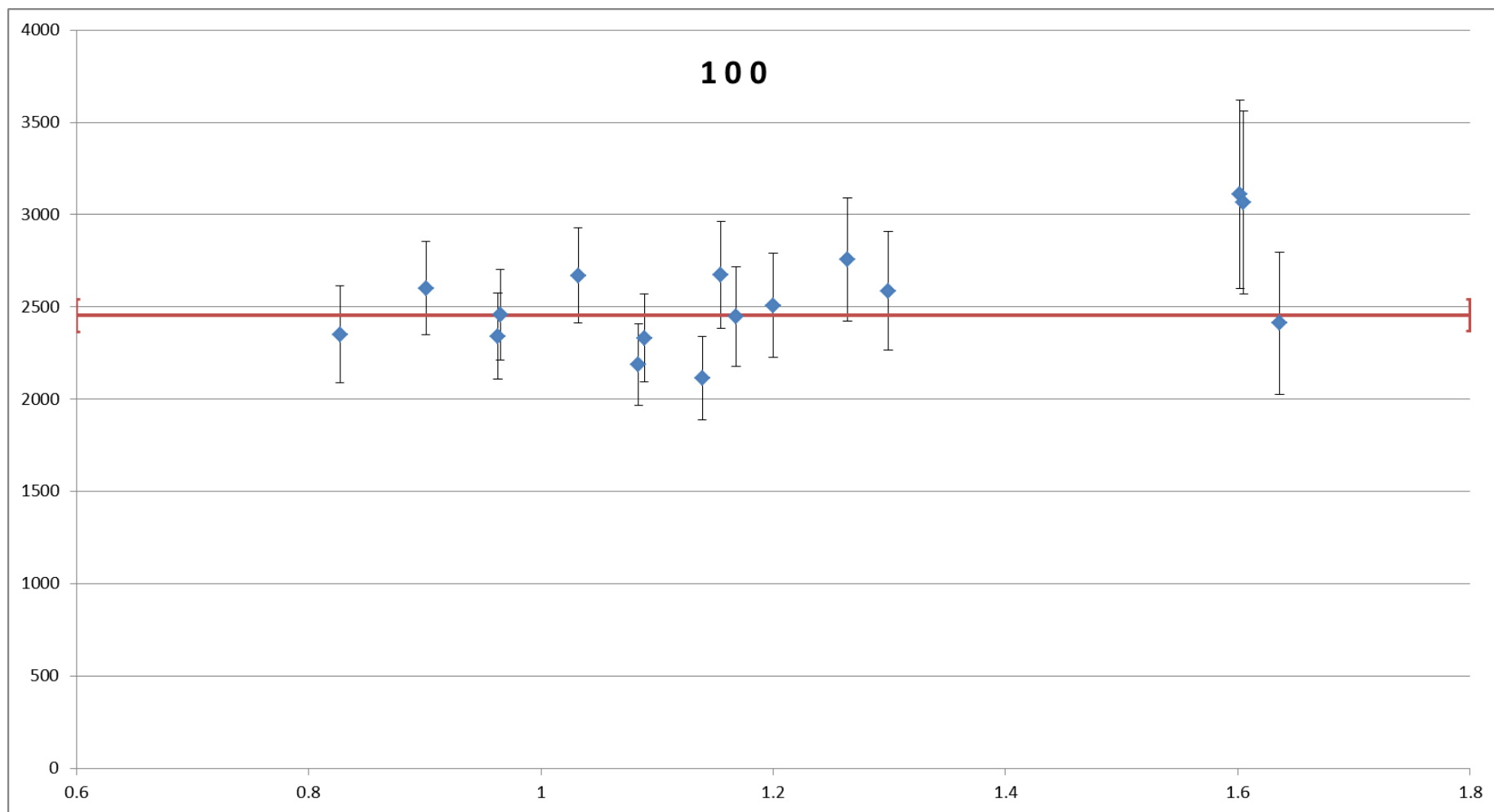
Plots of intensities versus wavelength for 4 reflections taken from example R1 of Table 1.

The red line with errors bars are the merged intensity value $\hat{I}_{h,i}$.

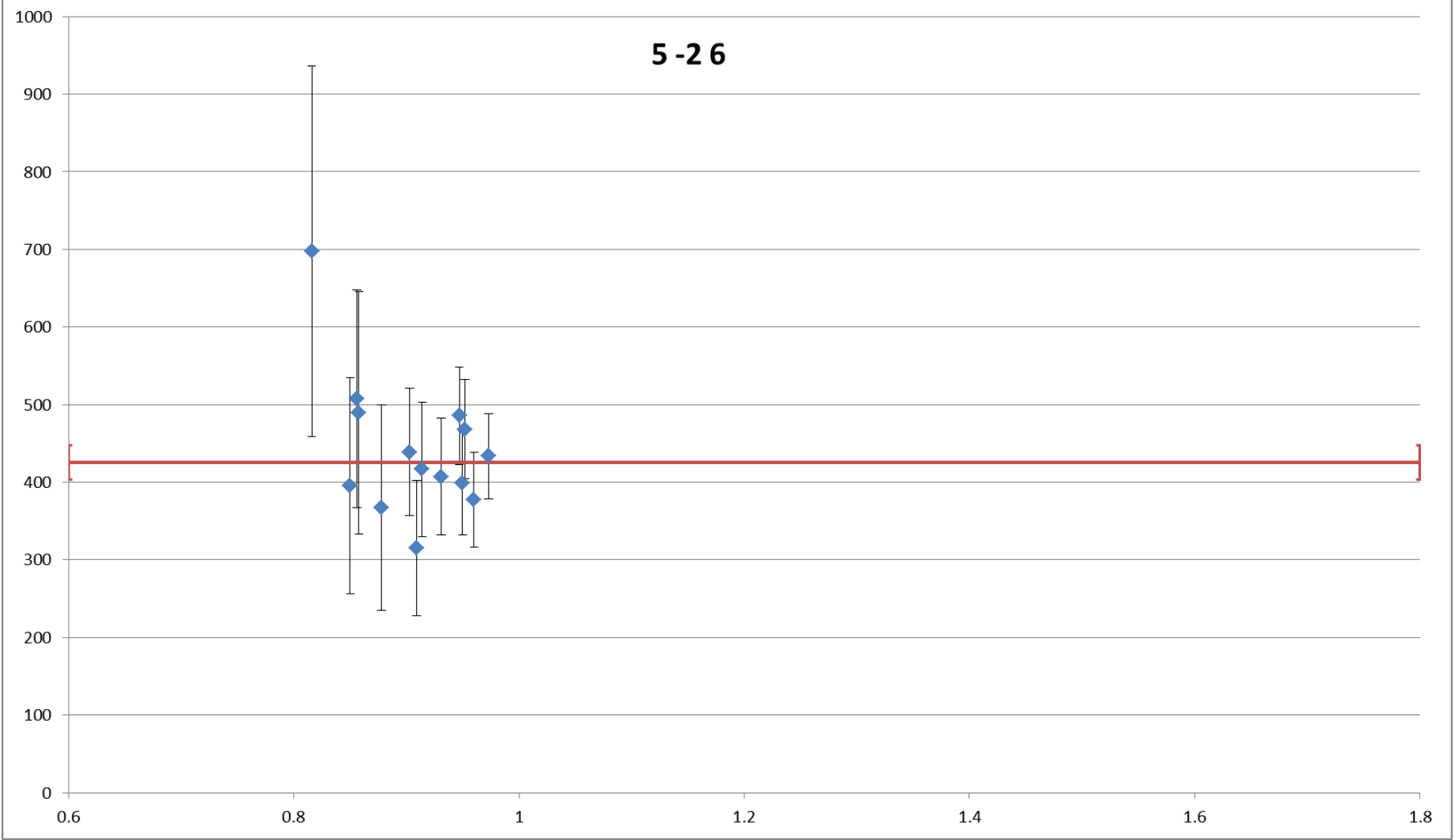
The blue points are the corrected individual intensities $K_{all} I_{h,i}$.

NB: Forbidden reflections, such as (225), are included in the data sets of Table 1 to illustrate performance for low spot intensity.





5-26



22-5

