



JOURNAL OF
APPLIED
CRYSTALLOGRAPHY

Volume 50 (2017)

Supporting information for article:

**Effect of the weather conditions during solution preparation on
lysozyme crystallization**

**Qing-Di Cheng, Rui-Qing Chen, Jin He, Da-Wei Li, Fan Yang, Yong-Ming Liu,
Qin-Qin Lu, Chen Dong and Da-Chuan Yin**

Supporting information

S1. Results

S1.1. The composition of the particulate matter in sample A

Based on the test results, the particulate matter contained the following types of elements and water-soluble ions can be seen in Table S1.

S1.2. The analysis of the X-ray energy spectrum

We selected different parts of sample B for the X-ray energy spectrum analysis and excluded C and Au atoms as these present in the sample amount. The elements in the Sample B can be seen in Table S1.

S1.3. Morphology of particulate matter

An electron microscopy was used to observe the morphology of the surface features of sample B, which can be seen in Figure S1

Component	Samples	
	Sample A	Sample B
Elements	Na, Mg, Al, Si, S, Cl, K, Ca, Sc, Ti, V, Cr, Mn, Fe, Co, Ni, Zn, As, Br, Rb, Sr, Mo, Cd, Sn, Sb, Ba, Cu, Pb	Ca, Fe, K, Mg, Na, Al, Ti, S, O, Si, P, S
Water-soluble ions	F ⁻ , Cl ⁻ , NO ²⁻ , Br ⁻ , NO ³⁻ , SO ₄ ²⁻ , Na ⁺ , NH ₄ ⁺ , K ⁺ , Mg ²⁺ , Ca ²⁺	

Table S1 Component of Sample A and Sample B

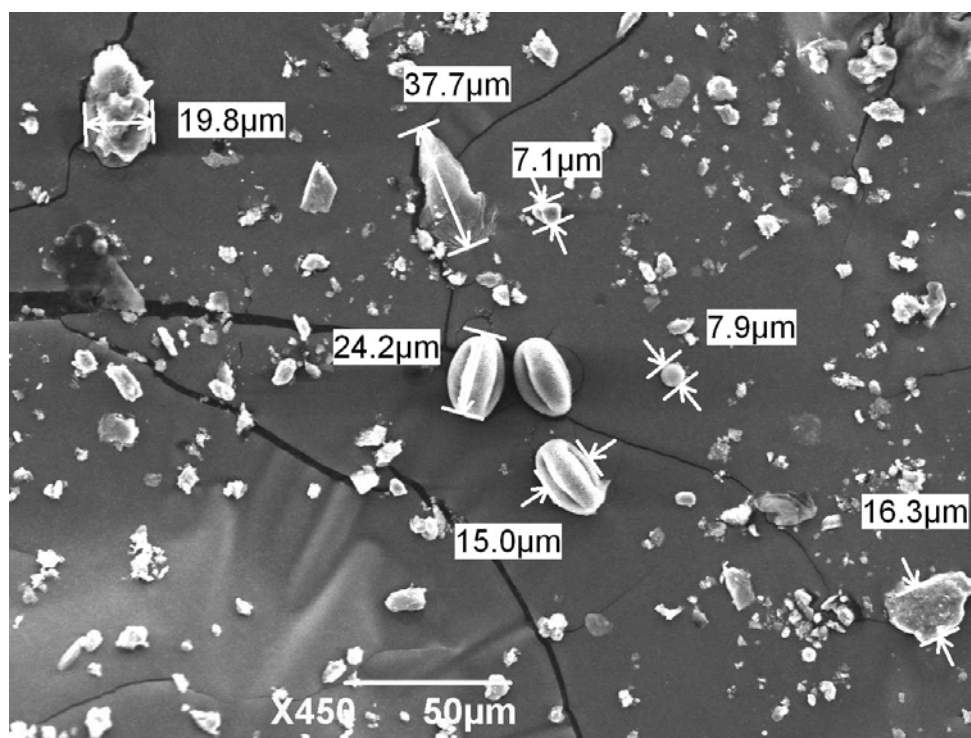


Fig. S1 Particulate matter under 450-fold magnification