

Supplementary Information

Fig. 8 depicts a 2d reciprocal space map image of a 20 nm C_{60} film prepared at 373 K substrate temperature. The well-defined diffraction rings reveal that the domains are not organised in a preferred orientation.

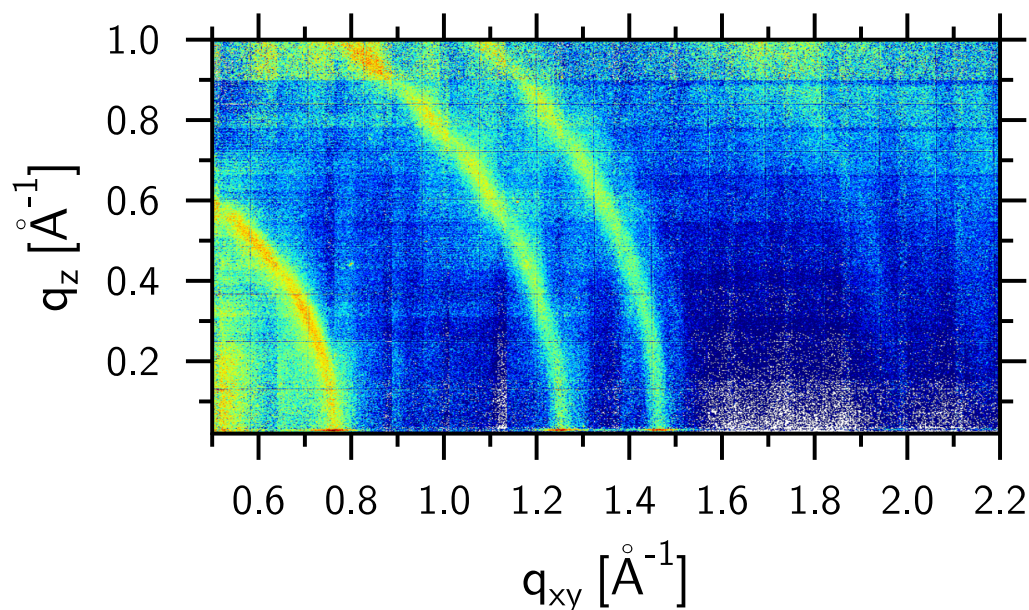


Figure 8: Reciprocal space map of a 20 nm C_{60} film prepared at 373 K. The image was taken with a MaxiPix area detector and composed of 147 single pictures using the *BINoculars* software.^{64,65}