



BIOLOGICAL
CRYSTALLOGRAPHY

Volume 71 (2015)

Supporting information for article:

Structure determination of uracil-DNA N-glycosylase from *Deinococcus radiodurans* in complex with DNA

Hege Lynum Pedersen, Kenneth A. Johnson, Colin E. McVey, Ingar Leiros and Elin Moe

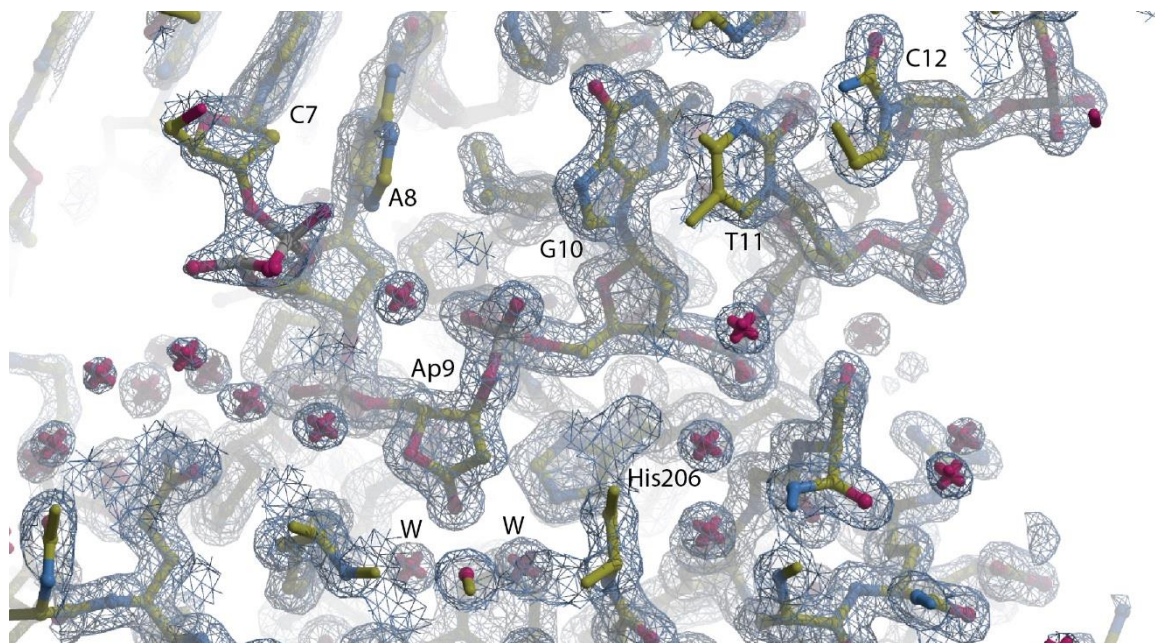


Figure S1 Electron-density maps ($2mF_o - F_c$) of *DrUNG*-DNA contact (1.5σ). The abasic site (Ab9) and the two catalytic waters (W) are in the center of the figure.

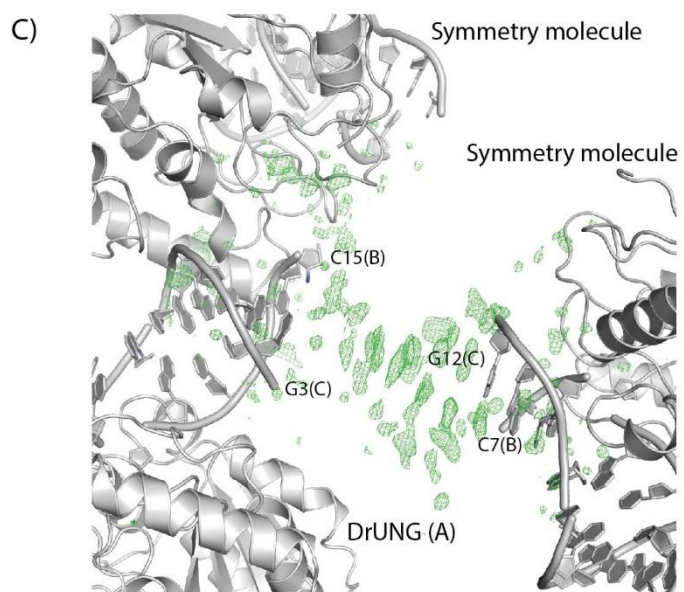
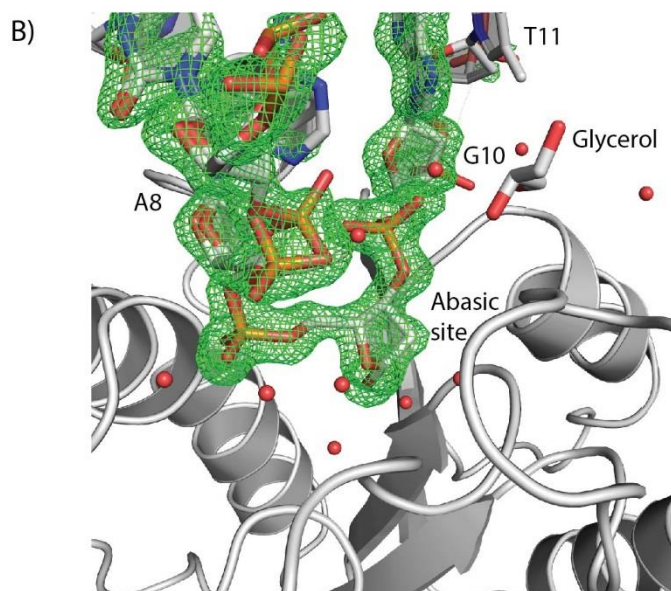
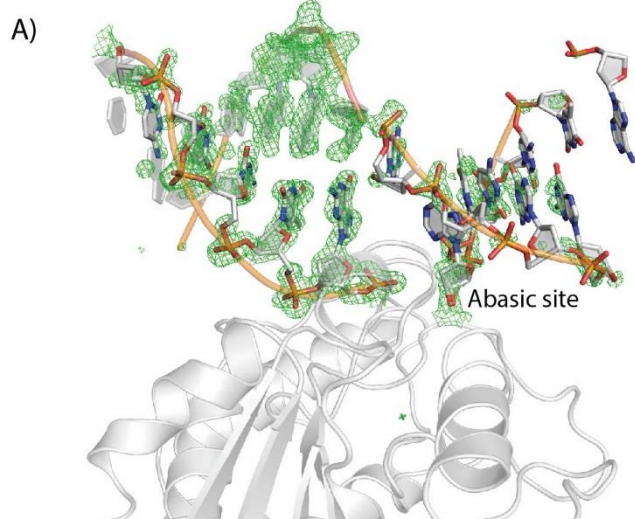


Figure S2 Difference maps and omit maps. A) Initial difference map (3σ) of DNA before adding nucleotides into the DNA. The final DNA model is included in the figure for reference. B) Omit map of the abasic site (3σ) showing the β -anomer of the abasic site (AAB) and C) Difference map of unmodelled nucleotides at the terminal ends of DNA showing the G-C overhang region between DrUNG-DNA and its symmetry molecules.

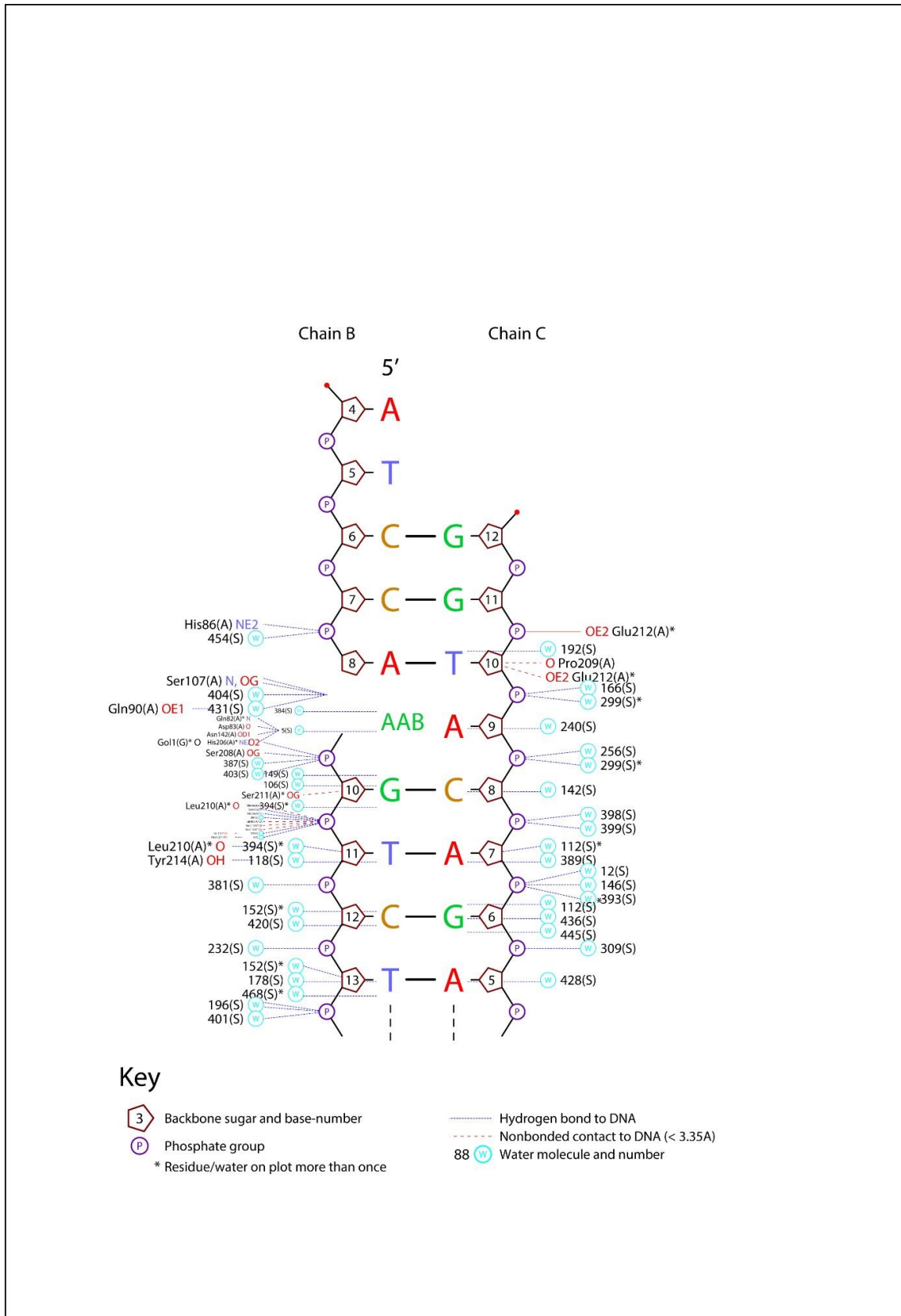
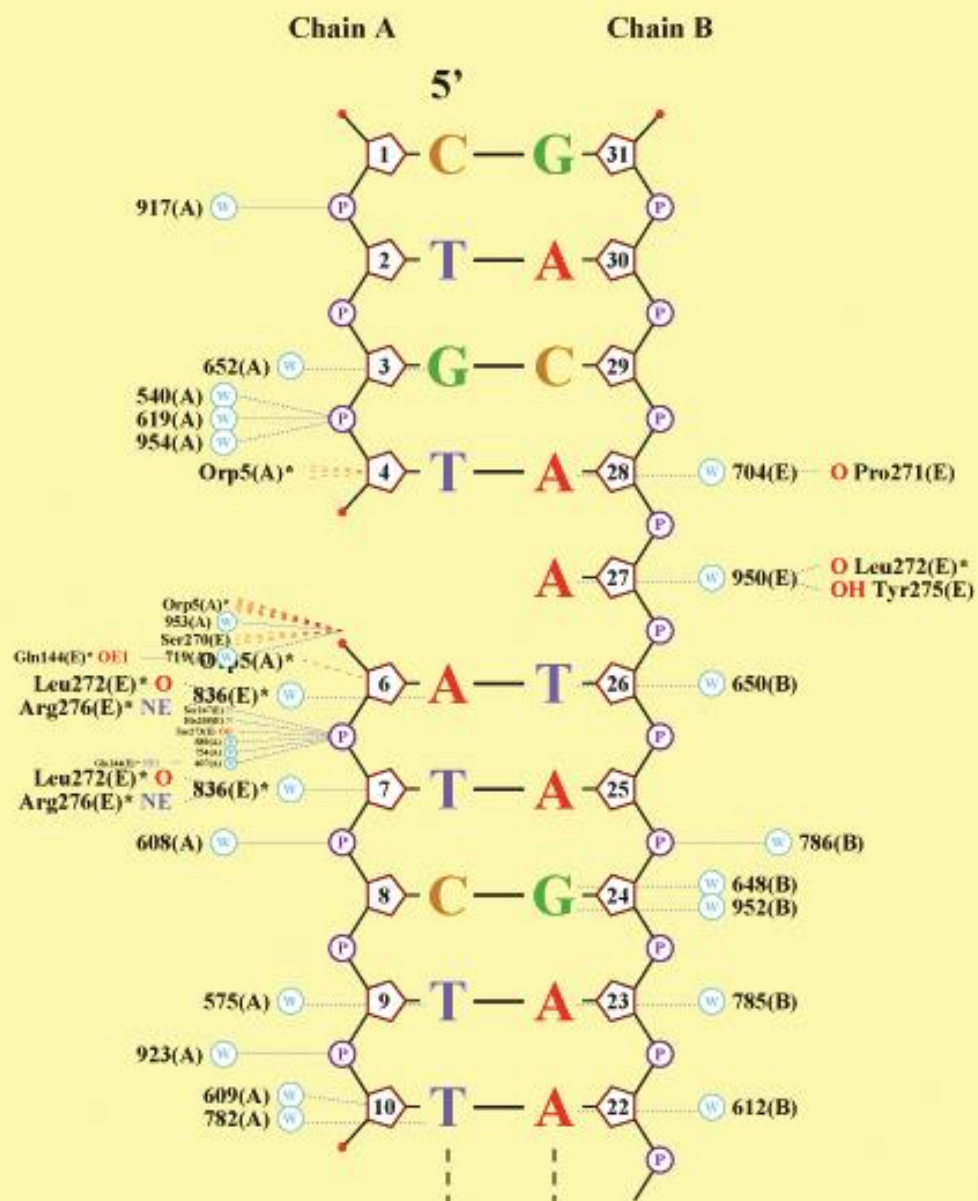


Figure S3 Nucplot of interactions between *DrUNG* and DNA. The plot is generated by PDBsum (<http://www.ebi.ac.uk/pdbsum/>).



Key

3 Backbone sugar and base-number

P Phosphate group

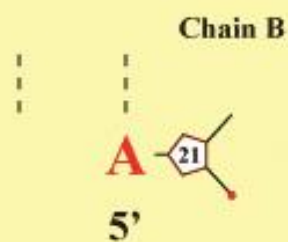
* Residue/water on plot more than once

— Hydrogen bond to DNA

----- Nonbonded contact to DNA (< 3.35Å)

88 W Water molecule and number

pdb1ssp



Key



Backbone sugar and base-number



Phosphate group

* Residue/water on plot more than once

..... Hydrogen bond to DNA

----- Nonbonded contact to DNA (< 3.35Å)

88 (W) Water molecule and number

pdb1ssp

Figure S4 Nucplot analysis of interactions between hUNG and DNA (PDB ID: 1SSP). The plot is generated by PDBsum (<http://www.ebi.ac.uk/pdbsum/>).