



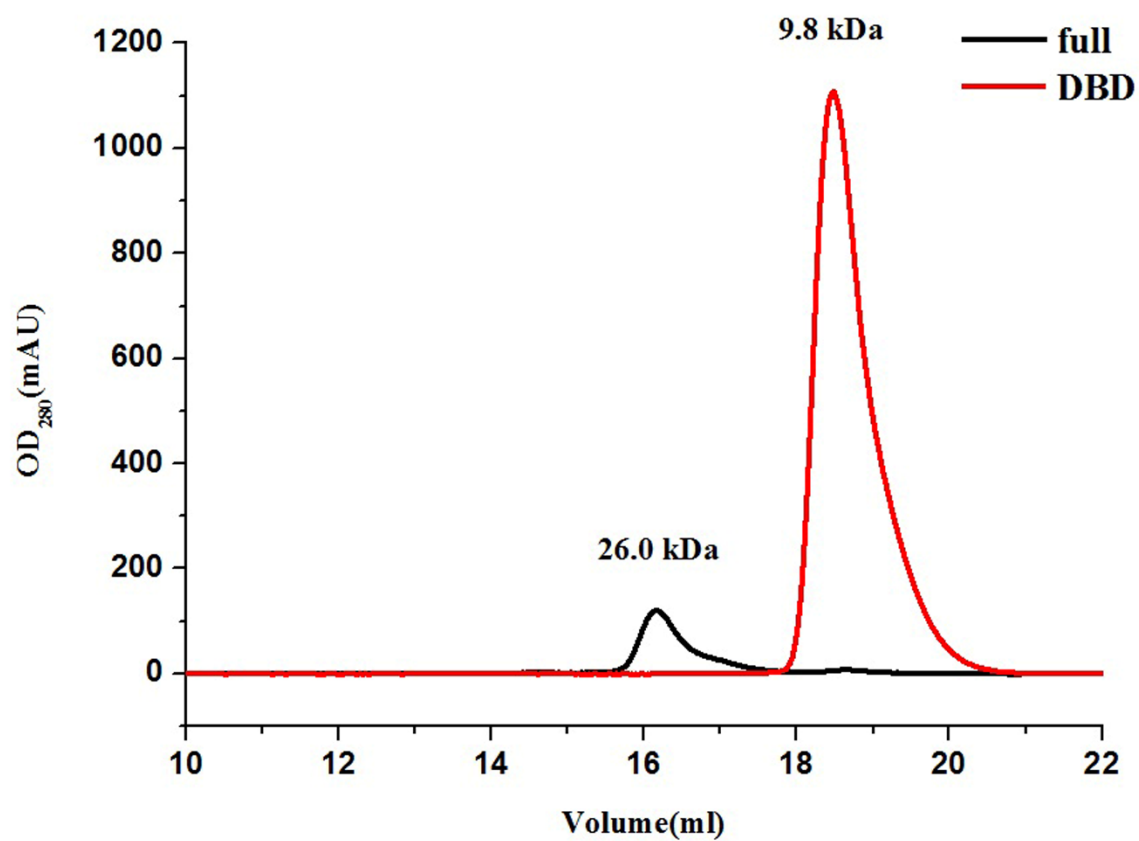
BIOLOGICAL  
CRYSTALLOGRAPHY

**Volume 71 (2015)**

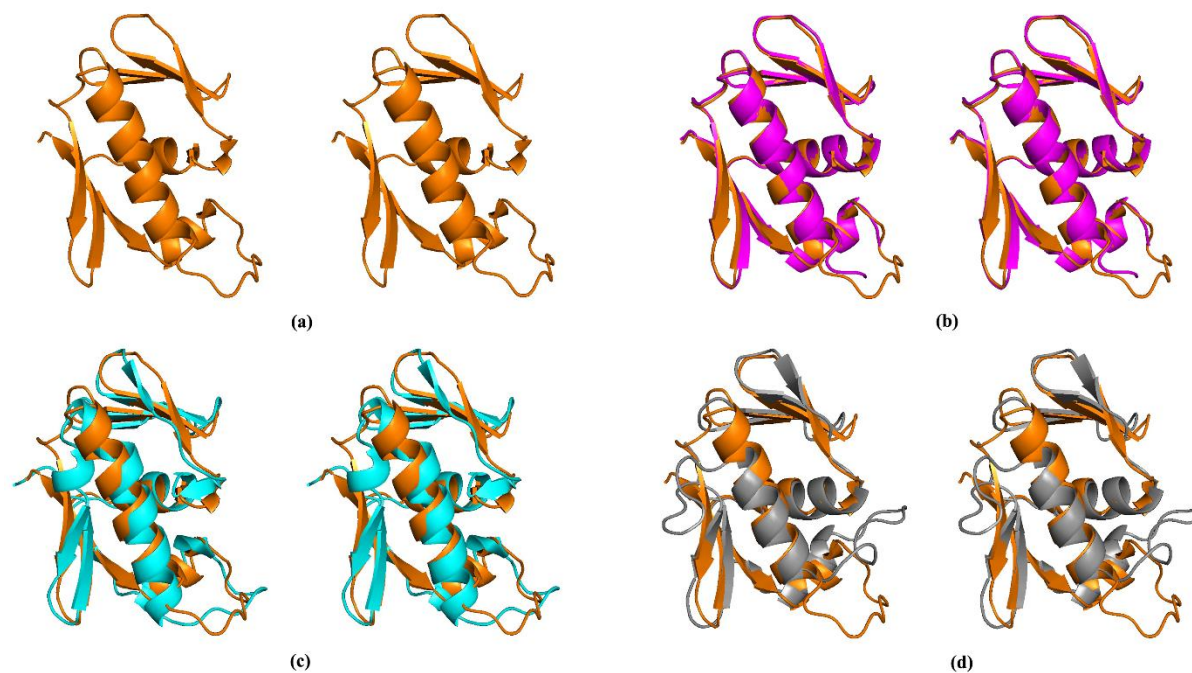
**Supporting information for article:**

**Structure of the DNA-binding domain of the response regulator  
SaeR from *Staphylococcus aureus***

**Xiaojiao Fan, Xu Zhang, Yuwei Zhu, Liwen Niu, Maikun Teng, Baolin Sun and  
Xu Li**



**Figure S1** Size-exclusion chromatography assay of full-length SaeR and SaeR<sup>DBD</sup>.



**Figure S2** Stereoview of the structure of SaeR<sup>DBD</sup> alone and comparison of PhoB<sup>DBD</sup> and OmpR<sup>DBD</sup>.

(a) Stereoview of the structure of molecule B of SaeR<sup>DBD</sup>. (b) The overlap of molecule B over molecule A of PhoB<sup>DBD</sup>. (c) The overlap of SaeR<sup>DBD</sup> over PhoB<sup>DBD</sup>. (d) The overlap of SaeR<sup>DBD</sup> over OmpR<sup>DBD</sup>. Molecule A and B of SaeR<sup>DBD</sup>, PhoB<sup>DBD</sup>, and OmpR<sup>DBD</sup> are shown in magenta, orange, cyan, and grey, respectively.