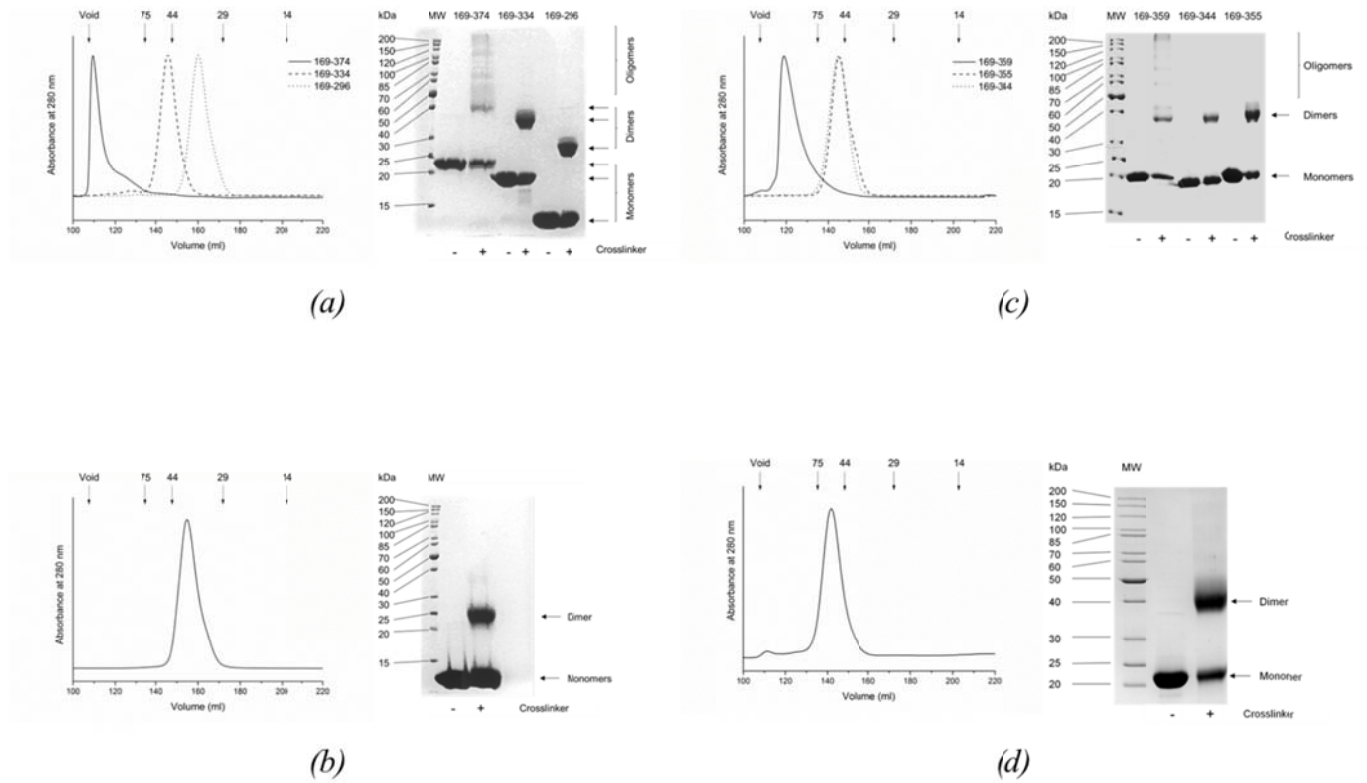


Supplementary Materials

Figure S1

Size-exclusion chromatography and chemical cross-linking of SPOP proteins.

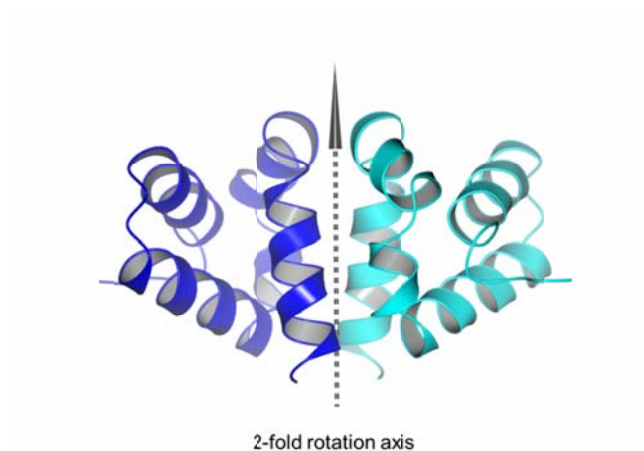


(a) SPOP¹⁶⁹⁻³⁷⁴, SPOP¹⁶⁹⁻³³⁴ and SPOP¹⁶⁹⁻²⁹⁶. (b) SPOP²⁷⁰⁻³⁷⁴ [L273D L282D L285K]. (c) SPOP¹⁶⁹⁻³⁵⁹, SPOP¹⁶⁹⁻³⁵⁵ and SPOP¹⁶⁹⁻³⁴⁴. (d) SPOP¹⁶⁹⁻³⁷⁴ Y353E.

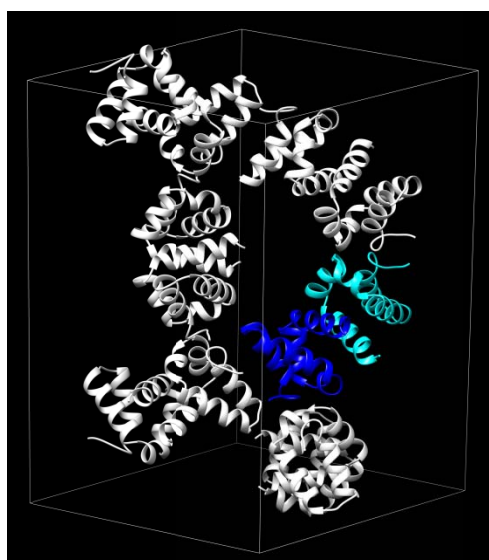
The arrows above the chromatography traces indicate the elution volumes of globular protein standards of known molecular weight (Gel Filtration LMW Calibration Kit, GE Healthcare). The SPOP proteins have an extended shape; the size-exclusion chromatography was therefore used to compare the elution profiles of similar SPOP proteins, but not to calculate accurate molecular weights.

Figure S2

Crystal packing and 2-fold rotational symmetry of the SPOP C-terminal domain dimer.



(a)



(b)

(a) Cartoon representation of the SPOP CTD dimer. The two chains are coloured blue and cyan. The two-fold rotational axis of the dimer that is formed from crystallographic symmetry is indicated with an arrow. (b) Cartoon representation showing packing of SPOP CTD dimers within the unit cell. The two chains of the SPOP CTD dimer are coloured blue and cyan.

Figure S3

Examples of SPOP¹⁶⁹⁻³⁷⁴ oligomers as imaged using atomic force microscopy.

