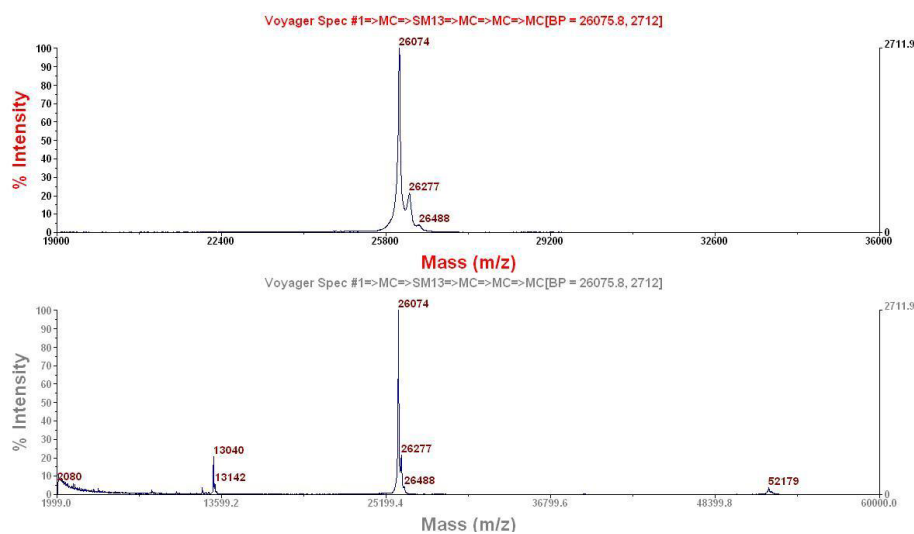
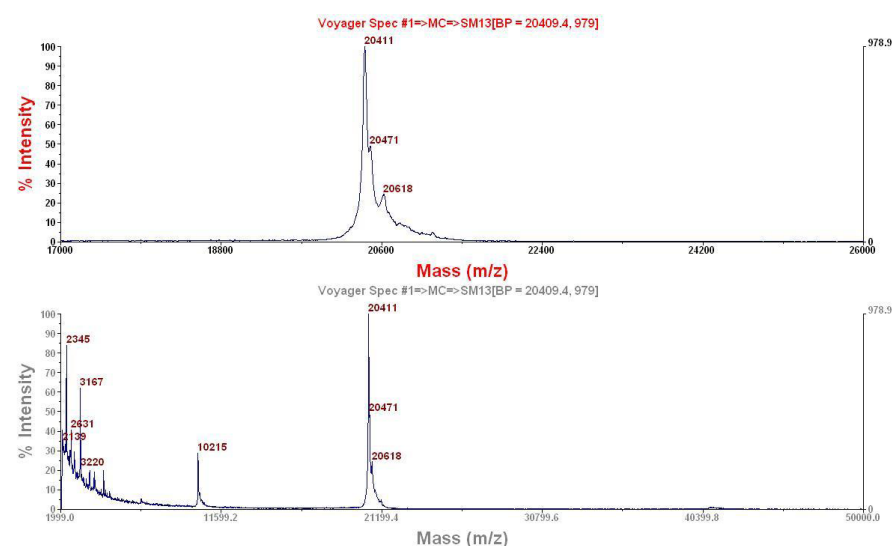


Supplementary Material



(a)



(b)

Figure S1. Mass determination of noncrystallized protein and crystal contents. (a) AcSrtC-1. (b) Dissolved crystals of AcSrtC-1 treated with 1%(w/w) α -chymotrypsin. The estimated experimental error is ± 50 Da.

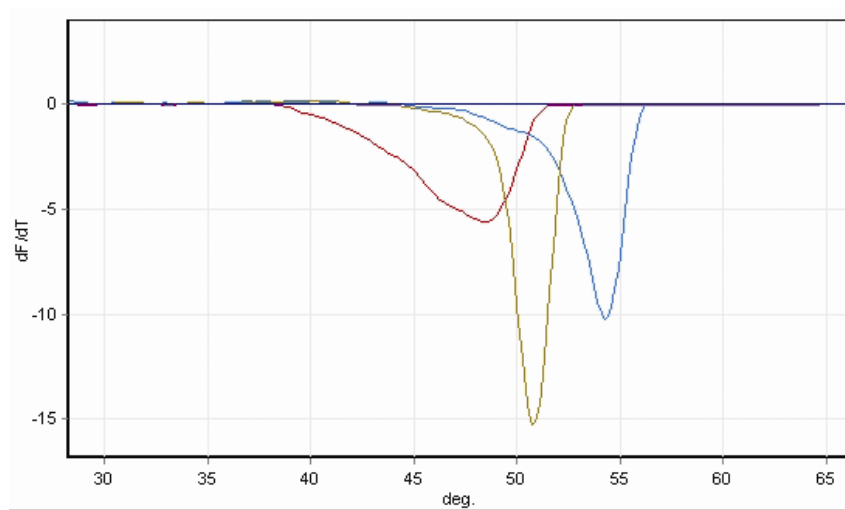


Figure S2. Thermal shift assay. The red curve depicts AcSrtC-1, the yellow curve AcSrtC-1 in 5 mM $MnCl_2$ and the blue curve AcSrtC-1 in 5 mM $CaCl_2$.